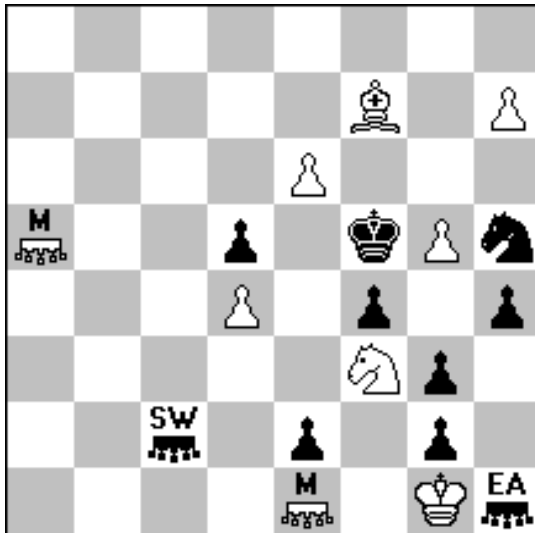


## Problem No. 1

Sven Trommler, Voglerstr. 14, 01277 Dresden, Germany  
s.trommler@web.de

65. feenschach-TT 2013

1<sup>st</sup> Prize



#2

(9+10)

Elch = moose : a5, e1

Adler= eagle : h1

Spatz= sparrow : c2

1.h7-h8=M ? threat: 2.Me1-a6 # (A)

1...Sh5-g7 (a) 2.Bf7-g6 # (B)

but 1...SWc2-d3 !

1.h7-h8=SW ? threat: 2.Bf7-g6 # (B)

1...Sh5-g7 (a) 2.Sf3\*h4 # (C)

But 1...EAh1-h3 !

1.h7-h8=EA ! threat: 2.Sf3\*h4 # (C)

1...Sh5-g7 (a) 2.Me1-a6 # (A)

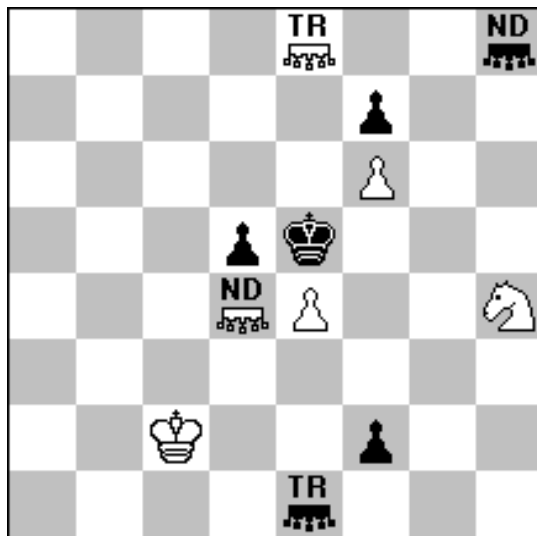
Le Grand - cycle

## Problem No. 2

Sven Trommler, Voglerstr. 14, 01277 Dresden, Germany  
s.trommler@web.de

Julia's Fairies Marine TT 2013

Prize



Ser-H#5      2 solutions      (6+6)

Triton: e8; e1

Nereide: h8; d4

I)

1. TRe1-e3

2. Ke5\*f6

3. NDh8\*f6-e5

4. TRe3-f3

5. TRf3-f4 NDd4\*e5-f6 #

II)

1. NDh8-g7

2. Ke5\*f6

3. TRe1\*e4-e5

4. NDg7-h6

5. NDh6-g5 TRe8\*e5-e4 #

Annihilation of white pawns e4/f6

Sacrifices of triton/ nereide on e5, the square of bk in the diagram position

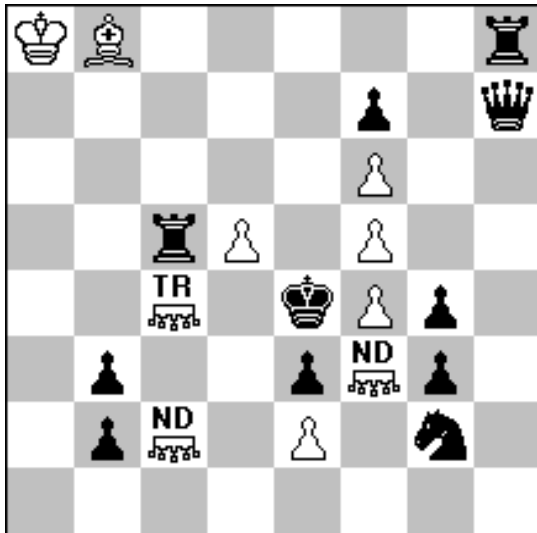
Meredith

### Problem No. 3

Sven Trommler, Voglerstr. 14, 01277 Dresden, Germany  
s.trommler@web.de

Julia's Fairies Marine TT 2013

4<sup>th</sup> Prize



H#2            3 solution    (10 + 11)

Nereides: c2, f3

Triton: c4

I) 1.Qh7\*f5 NDc2\*b3-a4 2.Qf5\*f4 NDa4-c2 #

II) 1.Sg2\*f4 TRc4\*c5-c6 2.Sf4\*d5 TRc6-c4 #

III) 1.Rc5\*d5 NDf3\*g4-h5 2.Rd5\*f5 NDh5-f3 #

cycle of black fields f5/f4/d5

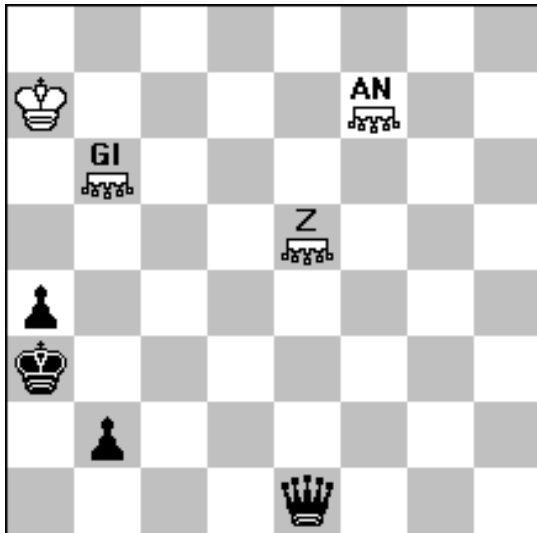
white switchbacks

## Problem No. 4

Sven Trommler, Voglerstr. 14, 01277 Dresden, Germany  
s.trommler@web.de

GT „Arnoldo Ellerman – 120“ 2014

### 3. Prize



H#2                      3 solution                      (4 + 4)

Antelope: f7

Giraffe: b6

Zebra: e5

I) 1.Qe1-h4 ANf7-b4 2.Qh4\*b4 [+wANh4] ANh4-d7 #

II) 1.Qe1-a1 Glb6-a2 2.Qa1\*a2 [+wGla1] Gla1-e2 #

III) 1.Qe1-e3 Ze5-b3 2.Qe3\*b3 [+wZe3] Ze3-c6 #

6 different moves of the black queen in order to give fairy pieces the right position  
and to block a2, b3, b4

Sacrifices of fairy pieces on a2, b3, b4

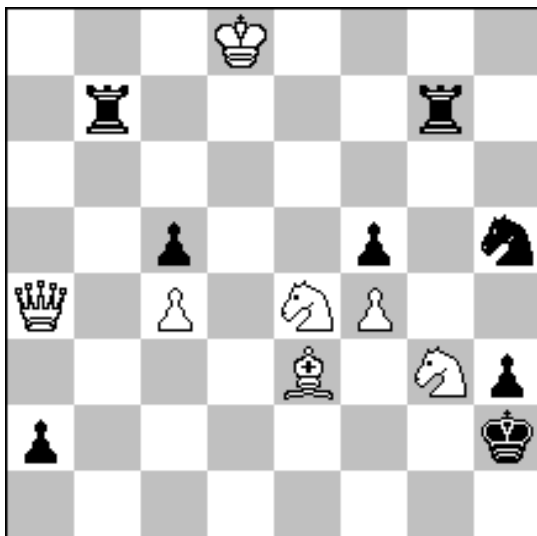
Model mates

## Problem No. 5

Sven Trommler, Voglerstr. 14, 01277 Dresden, Germany  
s.trommler@web.de

Lehmkuhl – GT 2014

1<sup>st</sup> Honorable Mention



Ser-S#7

(7 +8)

Circe

A) diagram

1. Sg3\*h5[+bSg8]

2. Sh5\*g7[+bRh8]

3. Sg7\*f5[+bPf7]

4. Sf5-g3

5. f4-f5

6. f5-f6

7. Qa4-c2 + Sg8\*f6[+wPf2] #

B) bSh5 --> d6

1. Se4\*d6[+bSb8]

2. Sd6\*b7[+bRa8]

3. Sb7\*c5[+bPc7]

4. Sc5-e4

5. c4-c5

6. c5-c6

7. Qa4\*a2[+bPa7] + Sb8\*c6[+wPc2] #

wS-Rundlauf

Creation of black batteries

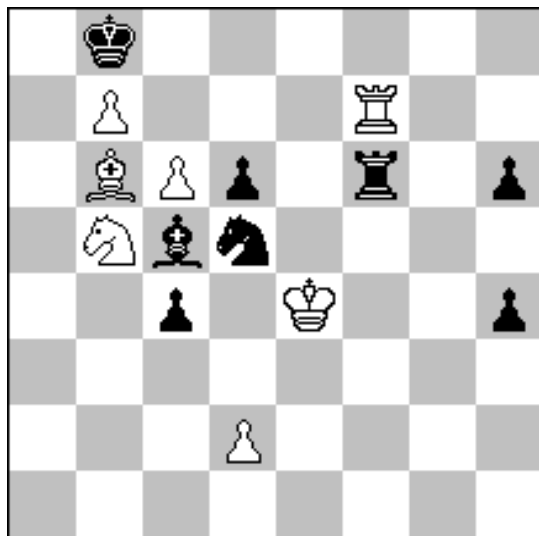
Differentiation of the wQ-move

## Problem No. 6

Sven Trommler, Voglerstr. 14, 01277 Dresden, Germany  
s.trommler@web.de

### 134.TT Superproblem 2015

1<sup>st</sup> – 2<sup>nd</sup> Prize



HS#3,5

(7+8)

I)

1...Bc5-g1

2.Bb6-f2 Sd5-c3 +

3.Ke4-e3 Rf6\*f2

4.Rf7-f8 + Rf2\*f8 #

II)

1...Rf6-f1

2.Rf7-f2 Sd5-f6 +

3.Ke4-f4 Bc5\*f2

4.Bb6-a7 + Bf2\*a7 #

Bicolor Bristol  
Indian  
White sacrifices