

1 James Quah  
Problemskak 2013

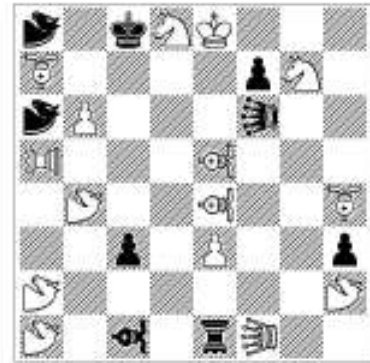


#2  
AMU  
♙♘♞ Chinese  
♙♞♞ (Bishop-, Rook-) Moose  
♙♞ Non-Stop Oryx

- |           |                  |   |
|-----------|------------------|---|
| 1.VAe6A ! | threat: 2.Se7B   | A threatens B due to observation f6-e6-c6.                      |
| 1...LEe7a | 2.VAf5C          | a moves LEf6 away but observes e7-e6-e4 for C.                  |
| 1...RMf4b | 2.PA*c3D         | b guards e7 but observes f6-f4-f3 for D.                        |
| 1...Md6c  | 2.LE*c3E         | c removes observation f6-e6-d6-c6 but observes d6-d2-e1 for E.  |
| 1...LEg5d | 2.NOc5F          | d moves LEf6 away but observes g5-b5-a5 for F.                  |
| 1.VAf5C ? | threat: 2.PA*c3D | C threatens D due to observation f6-f5-f3.                      |
| 1...LEe7a | 2.LE*c3E         | a moves LEf6 away but observes e7-e3-e1 for E.                  |
| 1...RMf4b | 2.NOc5F          | b removes observation f6-f5-f4-f3 but observes f4-b4-a5 for F.  |
| 1...Md6c  | 2.Se7B           | c threatens interposing with d6-c4 but observes f6-d6-c6 for B. |
| 1...LEg5d | 2.VAe6A          | d moves LEf6 away but observes g5-f5-d5 for A.                  |
- Refutation:  
1...RMf2!

Djurasevic 6-fold, distance 3 cycle

2 James Quah  
The Problemist 2014



#2  
AMU  
♞♜♝ Chinese  
♞♜ (Bishop-, Rook-) Moose  
♞♜ Equihopper (English)

1.VAf5 A?	threat: 2.LEb5 B	A threatens B due to observation f6-f5-f1.
1...LEe7 a	2.gSe6 C	a moves LEf6 away but observes e7-g7 for C.
1...EQc6 b	2.b7 D	b attacks a2 but observes f6-c6-b6 for D.
1...LEg5 c	2.VAb8 E	c moves LEf6 away but observes g5-f5-e5 for E.
1...RMf4 d	2.PAb5 F	d removes observation f6-f5-f4-f1 but observes f4-b4-a5 for F.
Refutation: 1...EQc4 !		

1.gSe6 C!	threat: 2.b7 D	C threatens D due to observation f6-e6-b6.
1...LEe7 a	2.VAb8 E	a moves LEf6 away but observes e7-e6-e5 for E.
1...EQc6 b	2.VAf5 A	b removes observation f6-e6-c6-b6 but observes a8-c6-e4 for A.
1...LEg5 c	2.PAb5 F	c moves LEf6 away but observes g5-e5-a5 for F.
1...RMf4 d	2.LEb5 B	d closes h2-e5-b8 but observes f6-f4-f1 for B.

Djurasevic 6-fold distance-2 cycle.

3 James Quah  
2<sup>nd</sup> Prize  
Lörinc-40 2014



#3

♞♜ Chinese

1. VAb2? (2. Sd8#) d3 2. Se5# 1...VAb8!  
1. VAa3? (2. Rf8#) c4 2. Re7# 1...VAb8!

1. PAa4! (2. Pxf4+ gxf4 3. Rg7)  
1...d3 2. VAb2 (3. Se5) Sd4 3. Sd8  
1...c4 2. VAa3 (3. Re7) Sc5 3. Rf8  
1...Bg3 2. Rxg5 3. Rg7

Swiss theme with Chinese Levman

4 James Quah  
The Problemist 2015



#2

♗♖♗ (Bishop-, Rook-) Lion

♗ Rose-Lion

1.RNe1 A! threat 2.RLc6-c2 B

1...Llf5 2.Bc3 C

1...Lle5 2.Ll\*a3 D

1...Sf3 2.Llf1

1.RLc2 B? threat 2.Bc3 C

1...Llf5 2.Ll\*a3 D

1...Lle5 2.RNe1 A

1...Llc1 !

4-fold Djurasevic without captures

5 James Quah  
Phénix 2014



#3

↳ Giraffe

↳ Leopard = Giraffe+Zebra

↳ (3,6)-Leaper

↳ Fers

↳ Zebra-Rider

1. LPe5? / ZRa8\*c5? / Sxb5? / cRf1?  
1...ZR\*g8! / B\*c5! / d5! / R\*f6!

1. Kh1! (2. R\*g3+ h\*g3 3. h4)

1...Rd6 2. LPe5 (3. LPf1) 2...ZR\*g8?

2. ZR\*c5? R\*d2!  
2. S\*b5? Rd4!

1...Bd6 2. S\*b5 (3. Glc4) 2...d5?

2. cRf1? Bf4!  
2. LPe5? B\*e5!

1...d6 2.cRf1 ! (3.Qh6) 2...R\*f6?

2. ZR\*c5? d\*c5 !  
2. LPe5? d\*e5!

1...ZRd6  
2.ZR\*c5 ! (3. ZRe2) 2...B\*c5?

1...ZRa8 2.b\*a8=36 #

2. cRf1 ? ZRf3!  
2. S\*b5 ? ZRg4!

(The variation 2...Sg6 3. Q\*g6 occurs in all lines.)

Quadruple Grimshaw with triple avoidance by the unit moving to the interference square.

6 James Quah  
 1<sup>st</sup> Prize (Section D)  
 Gvozdják-50 2015



R#2 (4 solutions)  
 Functionary Chess  
 ♖♗ (Bishop-, Rook-) Hopper  
 ♞ Nightrider Hopper  
 ♝♞ (Bishop-, Rook-) Moose  
 ♛ Non-Stop Equihopper

The black defences cause the queen to be observed. White wants to force checkmate by observing the relevant black units that are also needed for the mate.

1.Ra6\*b6 ! zugzwang.  
 1...Kd4 2.RMf4 A Sc3\*b5  
 1...Kd3 2.BMf5 B Sc3\*b5

White observes b5 with the rook, so that black can play 2...S\*b5. Thus white must observe Sc3. The queen needs to guard b8, c8, d8, d7.

1.NHa3 ! zugzwang.  
 1...Kd4 2.BMf5 B Qd8  
 1...Kd3 2.RHf4 C Qd8

For the mate on d8 to be possible, BHg5 must observe the mating square without being observed. Hence 1. NHa3 prevents BMh7 from observing BHg5. The observed black unit (NHb4 or NEb2) guards d8. (The guard on b8 from NEb2 after 2. BMf5 is not needed.)

1.Bc8 ! zugzwang.  
 1...Kd4 2.RHf4 C Q\*c8  
 1...Kd3 2.BHf5 D Q\*c8

White unguards c8 so that black can play 2...Q\*c8. Observed units: NEc4, NEc2.

1.Ba7-b8 ! zugzwang.  
 1...Kd4 2.BHf5 D Qd7  
 1...Kd3 2.RMf4 A Qd7

White blocks b8 so that black can play 2...Qd7. Observed units: NHb3, NEb1.

### Fairy Rules:

AMU: A unit may make a mating move only if it is observed by exactly one enemy unit before moving.

Functionary Chess: A unit may move or capture only if it is observed by an enemy unit.

### Unusual Fairy Pieces:

Moose: Moves like a grasshopper but turns 45 degrees at the hurdle.

Oryx: Equihopper restricted to queen lines.

Fers: (1,1)-leaper

Giraffe: (1,4)-leaper

Zebra: (2,3)-leaper

Leopard = Giraffe + Zebra