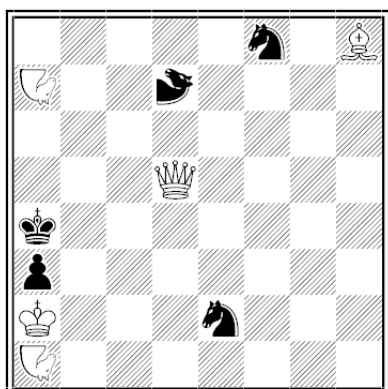


1

СЕРГЕЙ СМОТРОВ
“Probleemblad” – 2014



S# 22

5+5

Na1,Na7 – Nightriders
Zd7 – Zebra

Main Plan:

1.Nc3+? Kb4!

1.Nc8+ Kb4 2.Nf2+ Ka4 3.Db3+ Ka5 4.Ne3+ Ka6
5.Ne4+ Ka7 6.Ng4+ Ka8 **7.Dd5+** Kb8 8.Le5+ Ka7
9.Ld6+ Kb6 10.Dc5+ Kb7 (10... Ka6 11.Dc7+ Kb5 etc)
11.Dc6+ Ka7 12.Dc8+ Kb6 13.Dc7+ Kb5 14.Na7+ Ka4
15.Nc5+ Kb4 16.Na1+ Ka4 **17.Dc6+** Ka5 18.Lc7+ Kb4
19.Db5+ Kc3 **20.Dd5+** Kb4 21.Ld6+ Ka4,
and Main Plan 22.Nc3+ Sxc3#

-
1. Returns of white figures
 2. Logic maneuver Lh8 -> d6
 3. Exchange Na2 <-> Na7
 4. Active blocking Na1
 5. Mini - Ring maneuver White D **d5 – c6 – b5 – d5**
-

Sergej Smotrov

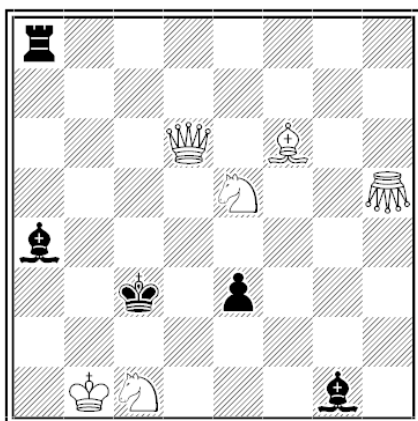
A/box 12,

g. SEMIPALATINSK 071400,
KAZAKHSTAN

E-mail: sergsmotrov@yandex.ru

2

СЕРГЕЙ СМОТРОВ
“Die Schwalbe” – 2014



S# 17

6+5

Gh4 – Grasshopper

Main Plan:

1.Qc5+? Kd2 2.Sf3+ Kd1 3.Qc2+ Bxc2+ 4.Kb2

1.Sa2+ Kb3 2.Qd5+ Ka3 3.Sc4+ Kb3 4.Sc1+ Kb4
5.Be7+ Kc3 6.Gc5+ Kb4 7.Gf2+ Kc3 8.Bf6+ Kb4
9.Gd4+ Kc3 10.Gb2+! Kb4 11.Sa2+ Kb3 12.Se5+ Ka3
13.Qd6+ Kb3 14.Sc1+ Kc3, and Main Plan 15.Qc5+ Kd2
16.Sf3+ Kd1 17.Qc2+ Bxc2#

-
1. Returns of white figures
 2. Logic maneuver Gh5 -> b2
-

Sergej Smotrov

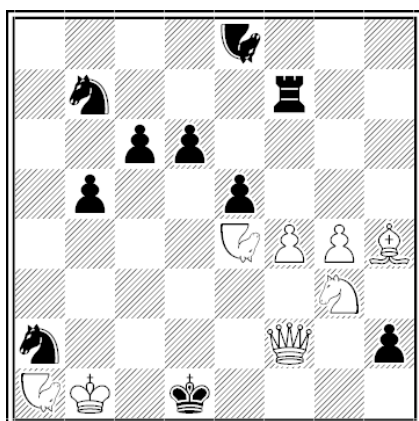
A/box 12,

g. SEMIPALATINSK 071400,
KAZAKHSTAN,

E-mail: sergsmotrov@yandex.ru

3

СЕРГЕЙ СМОТРОВ
“StrateGems” – 2014



S# 25

8+10

Na1, Ne4, Ne8 – Nightriders

Main Plan:

1. Nc3+? Sxc3 2.Kb2

1.Qf3+ Ke1 2.Qe3+ Kd1 3.Qb3+ Ke1 4.Nc2+ Kd1
5.Nb4+ Ke1 6.Ng5+ Kd2 7.Na8+ Ke1 8.Qe3+ Kd1
9.Qf3+ Ke1 10.Se2+ Kd1 11.Nf2+ Ke1 12.Nxd6+! Kd1
13.Nf2+ Ke1 14.Nb4+ Kd1 15.Sg3+ Ke1 16.Qe3+ Kd1
17.Qb3+ Ke1 18.Ng5+ Kd2 19.Ne4+ Ke1 20.Nc2+ Kd1
21.Na1+ Ke1 22.Qe3+ Kd1 23.Qf3+ Ke1 24.Qf2+ Kd1,
and Main Plan 25.Nc3+ Sxc3#

-
1. Returns of white figures
 2. Logic capture Pd6
-

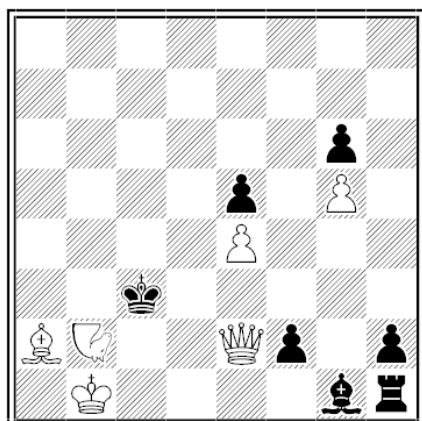
Sergej Smotrov

A/box 12,
g. SEMIPALATINSK 071400,
KAZAKHSTAN,

E-mail: sergsmotrov@yandex.ru

4

СЕРГЕЙ СМОТРОВ
“The Problemist
Supplement” - 2015



S# 15

6+7

Nb2 – Nightrider

Main Plan:

1.Qxf2?

1.Qc4+ Kd2 2.Qd3+ Ke1 3.Qe3+ Kf1 4.Nc4 Kg2
5.Qc3+ Kf1 6.Na5 Ke2 7.Bc4+ Kd1 8.Qd3+ Ke1
9.Qf1+ Kd2 10.Ba2 Kc3 11.Nc6! Kd2 12.Qe2+ Kc3,
and Main Plan 13.Qxf2 Kd3 14.Qe2+ Kc3 15.Qe3+ Bxe3#

-
1. Returns of white figures
 2. Logic maneuver Nb2 -> c6
 3. Active blocking Ba2
-

Sergej Smotrov

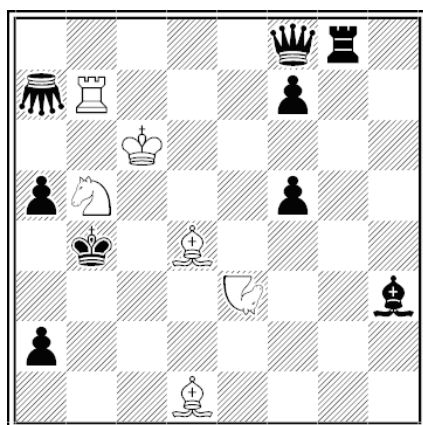
A/box 12,

g. SEMIPALATINSK 071400,
KAZAKHSTAN

E-mail: sergsmotrov@yandex.ru

5

СЕРГЕЙ СМОТРОВ
 “Harmonie-aktiv” – 2015



S# 27

6+9

Ga7 – Grasshopper
 Ne3 – Nightrider

Main Plan:

1.Bc5+? Qxc5+ 2.Kd7

1.Sd6+ Ka3 **2.Rb3+** Ka4 **3.Rd3+** Kb4 4.Bc3+ Ka3
 5.Bf6+ Kb4 6.Nc2+ Ka4 7.Ne1+ Kb4 8.Rd4+ Kc3
9.Rd5+ Kb4 10.Nc2+ K~ 11.Na6+ Ka3 12.Nc7+ Kb4
13.Rb5+ Ka3 14.Rxf5+! Kb4 15.Rb5+ Ka3 **16.Rd5+** Kb4
 17.Na6+ Ka3 18.Nc2+ Ka4! 19.Rd4+ Kb3 **20.Rd3+** Ka4
 21.Ne3+ Kb4 22.Bc3+ Ka3 23.Bd4+ Kb4 **24.Rb3+** Ka4
25.Rb7+ Ka3 26.Sb5+ Kb4, and Main Plan 27.Bc5+ Qxc5#

 1. Returns of white figures

2. Logic capture Pf5

 3. Double ring maneuver White R **b7 – b3 – d3 – d5 – b5**
b5 – d5 – d3 – b3 – b7

4. Active blocking Rb7

Sergej Smotrov

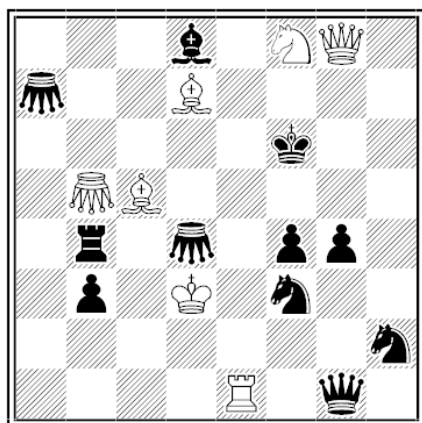
A/box 12,

 g. SEMIPALATINSK 071400,
 KAZAKHSTAN,

 E-mail: sergsmotrov@yandex.ru

6

СЕРГЕЙ СМОТРОВ
“Problemblad” – 2015



S# 16

7+11

Ga7,Gb5,Gd4 – Grasshoppers

Main Plan:

1.Se4+?

1.Re6+ Kf5 2.Rh6+ Ke5 3.Sg6+ Kf6 4.Sh8+ Ke5
(5.Sf7#??) 5.Re6+ Kf5 6.Rc6+ Ke5 7.Bd6+ Kf6
8.Bf8+ Ke5 9.Sf7+ Kd5 10.Sg5! Ke5 (11.Re6+? Kd5!)
11.Bd6+ Kf6 12.Bc5+ Ke5 13.Re6+ Kf5 14.Re1+ Kf6,
and Main Plan 15.Se4+ Ke5 16.Ge2+ Qe3#

-
1. Returns of white figures
 2. Logic maneuver Sf8 -> g5
 3. Solution no captures
-

Sergej Smotrov

A/box 12,
g. SEMIPALATINSK 071400,
KAZAKHSTAN,

E-mail: sergsmotrov@yandex.ru