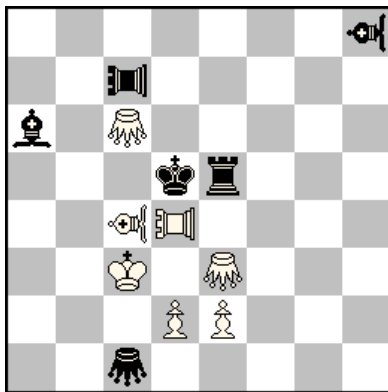


WCCI 2013-2015 - G - Fairies

1.

Jaroslav Štúň

Die Schwalbe, Heft 274, 8/2015 Pr.16415



C+ Popeye Windows-64Bit v4.73, WinChloe 3.33

H#3 **4 sol**

= Grasshopper

= Vao

= Pao

1.Re5-e7 + Kc3-d3 2.Kd5-e6 Kd3-e4 3.Ke6-d7 + Ke4-d5 #

1.Re5-e6 + PAd4-d3 2.Kd5-c5 Gc6-c8 3.Kc5-d6 + Kc3-d4 #

1.PAc7-g7 Ge3-c5 2.Re5-e6 e2-e4 + 3.Kd5-e5 VAc4-d5 #

1.PAc7-f7 d2-d3 2.Gc1-f4 VAc4*f7 3.Gf4-d6 Gc6-e6 #

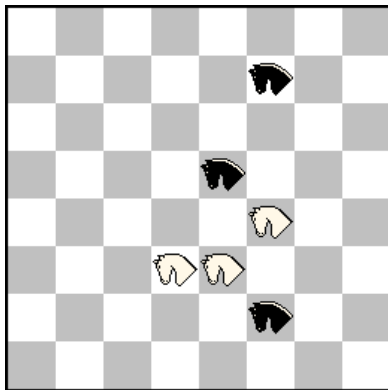
WCCI 2013-2015 - G - Fairies

2.

Jaroslav Štúň

6th Prize-Section "A" 100 MT A.Petkov 2015

Award 1.2.2015



C+ Popeye Windows-64Bit v4.73

HS#3

3 sol

Republican Chess

♁♂=Moose

1.Me3-f6 Mf2-g5
2.Mf4-e7 Mf7-d6
3.Md3-c7[+bKf5] + Kf5*f6[+wKd7] #

1.Mf4-g1 Me5-d2
2.Md3-f4 Mf7-g3
3.Mg1-h4[+bKe2] + Ke2*e3[+wKg4] #

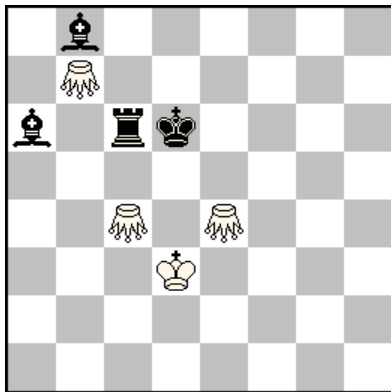
1.Mf4-d5 Mf7-d4
2.Md3-f4 Mf2-g5
3.Md5-c3[+bKf5] + Kf5*f4[+wKd3] #

WCCI 2013-2015 - G - Fairies

3.

Jaroslav Štúň

Variantim 64, 12/2014, Pr.2626



C+ Popeye Windows-64Bit v4.73, WinChloe 3.33

H#4

- a) diagram 1 sol
- b) ♙a6→b5 2 sol

♙ = Grasshopper

a) diagram

- 1. Rc6-b6 Gb7-f3
- 2. Ba6-b7 Gc4-f4
- 3. Kd6-c6 Kd3-c4
- 4. Bb8-d6 Gf3-d5 #

b) bBa6-->b5

- 1. Bb5-a4 Gc4-f4
- 2. Ba4-b3 Kd3-d4
- 3. Bb3-e6 Ge4-e7
- 4. Bb8-c7 Ge7-e5 #

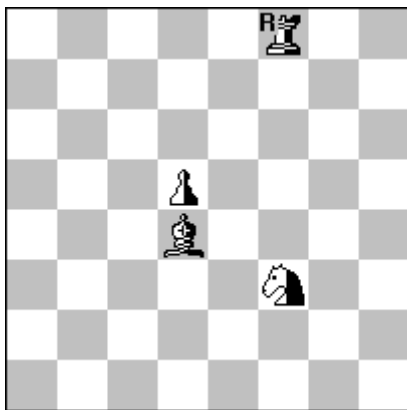
- 1. Rc6-c5 Gb7-f3
- 2. Bb5-c6 Ge4-b4 +
- 3. Kd6-d5 Gc4-e6
- 4. Bb8-e5 Ge6-e4 #

WCCI 2013-2015 - G - Fairies

4.

Jaroslav Štúň

1st Special Place TT Marianka 2015 - Fairies



C+ Popeye Windows-64Bit v4.73, WinChloe 3.33

H+++

Annan

Circé Protée descendant

- a)diagram 1 sol
b) ♖d5-->d3 2 sol
c)+ ♗d4 2 sol

neutral pieces, neutral royal Rock

a)diagram

- 1.nSf3-e5 nPd5-g2
2.nBd4*e5(+nPc2) nrRf8-f2
3.nBe5-f4 nrRf2-f3+++

b)nPd5-->d3

- 1.nPd3-g6 nrRf8*f3(+nPf7)
2.nBd4-c5 nBc5-f8
3.nPf7-e6 nrRf3-f7+++

- 1.nrRf8*f3(+nPf2)+ nrRf3-f4
2.nrRf4-h4 nPf2-f3
3.nBd4-e5 nrRh4-e4+++

c)+nSd4

- 1.nSf3*d4(+nPd2) nPd5-b4
2.nSd4-c6 nPd2-d4
3.nrRf8-f5 nrRf5-c5+++

- 1.nrRf8-e8 nSd4*f3(+nPf7)+
2.nPf7-f5 nSf3-g5
3.nSg5-e6 nrRe8*e6(+nPc7)+++

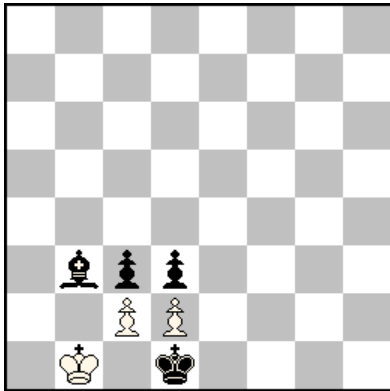
WCCI 2013-2015 - G - Fairies

5.

Jaroslav Štúň

3rd HM 10 JT Problemist Ukrainy

Problemist of Ukraine, Special issue 12/2014, pgs.55



C+ Popeye Windows-64Bit v4.73, WinChloe 3.33

H#4**

Einstein

1.....c2*d3=S
2.Bb3-c2=S Sd3-c1=P
3.Sc2-e1=P d2*c3=S #

1.....Kb1-a1
2.Kd1-c1 d2*c3=S
3.d3-d2 Sc3-b1=P
4.d2-d1 c2*b3=S #

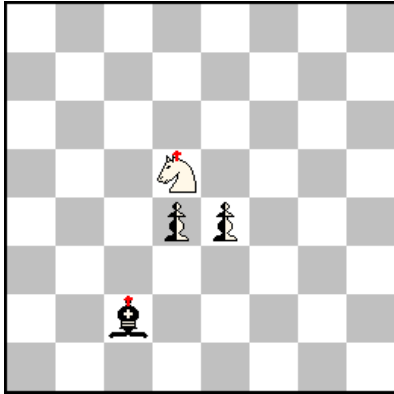
1.Bb3-c4=S d2*c3=S +
2.Kd1-d2 Kb1-a2
3.Kd2-c1 Ka2-b3
4.Sc4-d2=P c2*d3=S

WCCI 2013-2015 - G - Fairies

6.

Jaroslav Štúň

Phénix 256, 12/2015 Pr.7409



C+WinChloe 3.33

Back-to Back

a) diagram 6N & sd+++1

b) nPe4->d3 2N & sd+++5

c) nPd4->h2 5N & sd+++2

d) rBc2->b2 3N & sd+++4

e) rBc2->f5 4N & sd+++3

royal white Knight d5

royal black Bishop c2

neutral Pawns d4,e4

a) diagram 6N & sd+++1

1.nPd4-e2 2.nPe2-e1=nQ 3.nQe1-c3 4.brBc2-h2 5.nQc3-d4 6.brBh2-f4 & 1.nQd4-e3+++

b) nPe4->d3 2N & sd+++5

1.nPd3-d2 2.nPd4-e6+ & 1.nPe6-e7 2.nPe7-e8=nQ 3.nQe8-e2 4.wrSd5-e3 5.nQe2-d1+++

c) nPd4->h2 5N & sd+++2

1.nPh2-h1=nQ 2.nQh1-h3 3.nPe4-e3 4.brBc2-d3 5.nQh3-f3+ & 1.wrSd5-f4 2.nQf3-e2+++

d) rBc2->b2 3N & sd+++4

1.nPd4-c2 2.brBb2-d4 3.nPc2-c1=nQ & 1.wrSd5-a2 2.wrSa2-b4 3.wrSb4-c2 4.nQc1-e3+++

e) rBc2->f5 4N & sd+++3

1.nPe4-e3 2.nPd4-e2 3.nPe2-e1=nQ 4.nQe1-e2 & 1.nPe3-g5 2.wrSd5-e3 3.nQe2-g4+++