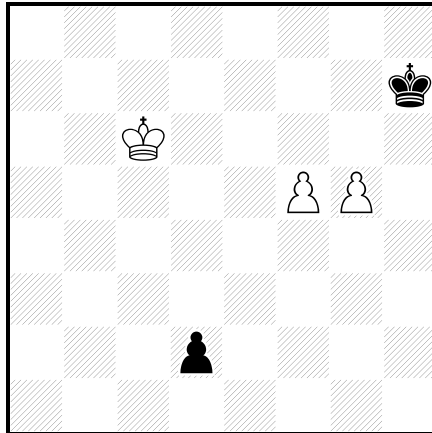


1.
Eric HUBER
hubereric@yahoo.fr
1st Prize Fairy Tourney
Messigny 2013



ser-hxz7 (3 + 2)
PWC
2.1.1.1.

I.) 1. d1=Q 2.Qd8 3.Qf8 4.Qxf5[+wPf8=Q] 5.Qf7 6.Qg8 7.Kh8 g6
(the capture 8.Qxg6[+wPg8=S/B] is forced, 8.QxQ would be a self-check)

II) 1.d1=R 2.Rd7 3.Rg7 4.Rxg5[+wPg7] 5.Rxf5[+wPg5] 6.Rf8 7.Rh8 g8=R
(the capture Kxg8[+wRh7] is forced, 8.RxR would be a self-check)

Echo promotions QQ-RR
C+ Popeye

ser-hxzn means Series Cap-Zug in n moves. After n Black moves, White plays one move and forces Black to make a capture by Zugzwang.

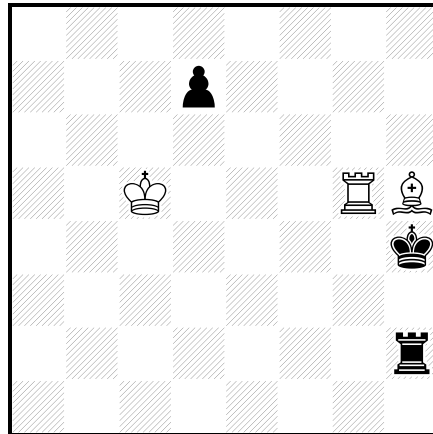
2.

Eric HUBER

hubereric@yahoo.fr

1st Prize, Problem Paradise 2012

F558 in Problem Paradise 60, Oct-Dec 2012, published in August 2013



hs#7 (3 + 3)

Bicolores

Functionary Chess

b) wRg5→e3

a)

1.Rg2+ Rh3 2.Bg4+ Rc3 3.Kb4 Rc4+ 4.Kb3 Rc2 5.Re2 d5 6.Re3 Rc6 7.Be6 d4#

b) wRg5-->e3

1.Bg4 d5 2.Bf5 d4 3.Rh3+ Kg5 4.Rh4 Rc2+ 5.Kb5 Rc6 6.Bc2 Rb6+ 7.Ka4 d3#

Diagonal-orthogonal correspondence.

Zugzwang mates: Black is left only with a pawn move, which simultaneously opens a line of friendly fire to the white King and guards the second white piece, for the specific mate with double check.

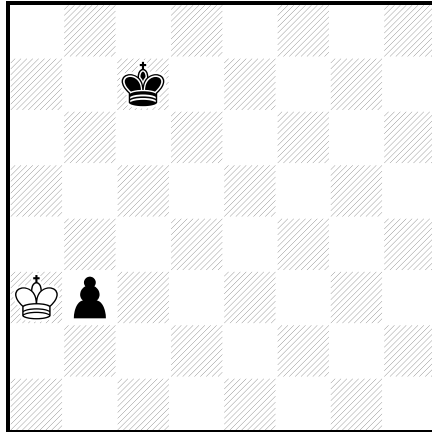
C+ Popeye

Functionary Chess: A piece can move only if it is threatened.

Bicolores: Kings are in check if they are controlled by the pieces of their side or threatened by the pieces of the other side.

Important note: Problem Paradise no. 60, Oct-Dec 2012, the last issue of the Japanese magazine for year 2012, was in fact published in August 2013.

3.
Eric HUBER
hubereric@yahoo.fr
2nd Prize Julia's Fairies 2041-I
511 Julia's Fairies, March 10th 2014



hs#4.5 (1 + 2)
 Sentinelles Pion Adverse
 Maximum AntiCirce
 b) bKc7→b6
 c) bKc7→d6

- a) 1...Kb6[+wPc7] 2. c8=Q Ka5[+wPb6] 3.Qe6 Ka6[+wPa5] 4.Kb4[+bPa3] a2
 5.Qe1[+bPe6] Kb5[+wPa6] #
- b) 1...Ka5[+wPb6] 2.b7 b2 3. b8=R b1=R 4.Rb3 Rh1 5.Rb5[+bPb3]+ Ra1#
- c) 1...Ke5[+wPd6] 2.Ka4[+bPa3] Kxd6[bKd6->e8][+wPe5] 3.e6 a2
 4.Ka3[+bPa4] a1=S 5.e7 Sc2#

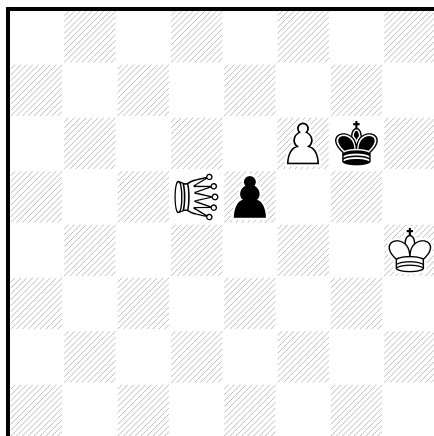
In all solutions the rebirth square of white King must be guarded. In a), white must guard e8 before occupying e1 with the promoted Queen. In b) bR guards e1. In c) the black promoted Knight guards e1.
 C+ Popeye

4.

Eric HUBER

huberic@yahoo.fr

2nd HM, Julia's Fairies 2014-I
534 Julia's Fairies, April 28th 2014



hs#2 (3 + 2)
Isardam SuperCirce
Locust d5
b) bPe5→f5

a) 1.Lxe5-f5[+bPa1=L]+ Lxf6-g7[+wPg8=L] 2.Kg5+ Kxf5[+wLg6]#

b) 1.Lxf5-g5[+bPf1=L]+ Lxf6-f7[+wPe8=L] 2.Kh5+ Kxg5[+wLg6]#

Echo mates, diagonal-orthogonal correspondence.

Specific mates exploiting Isardam spikes (specific Isardam pins).

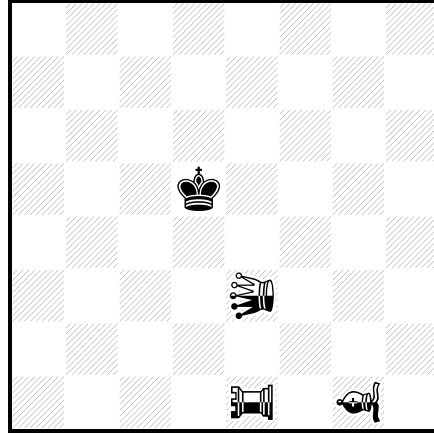
C+ Popeye

5.

Eric HUBER

hubereric@yahoo.fr

10923, feenschach 205, I-II/2014



h#1.5 (0 + 1 + 3n)
Take&Make, Anti-Take&Make
Siren e3, Triton e1, Nereid g1
6 solutions

1...nNDg1xe3-c3[+nSle5]+ 2.Kd5xe5-a5[+nSle6] nTRe1xe6-a3[+nSlb3]#
1...nNDg1xe3-f2[+nSld4]+ 2.Kd5xd4-h4[+nSle4] nTRe1xe4-h2[+nSlg2]#
1...nNDg1xe3-b6[+nSld4]+ 2.Kd5xd4-d8[+nSle4] nTRe1xe4-b8[+nSlb7]#
1...nNDg1xe3-c5[+nSle6]+ 2.Kd5xc5-f8[+nNDd6] nTRe1xe6-d8[+nSld7]#
1...nNDg1xe3-d1[+nSlc5]+ 2.Kd5xc5-c1[+nSlc2] nNDd1xc2-e3[+nSle2]#
1...nNDg1xe3-c4[+nSle6] 2.Kd5xe6-a6[+nSle7] nTRe1xe7-a4[+nSlb4]#

6 Chameleon echo mates.

All moves are specific

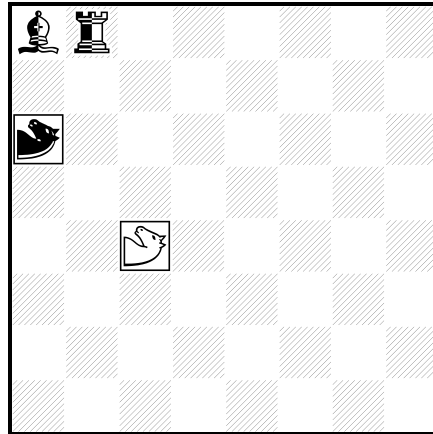
C+ Popeye

6.

Eric HUBER

hubereric@yahoo.fr

G15 Шахматная композиция 121, 2015



hs#3.5 (1 + 1 + 2n)
Circe
Royal Radial-Leapers c4, a6
2 solutions

1...nBe4 2.nBc2 rRKg4 3.nBh7 nBg8+ 4.nRxc8[+nBc8]+ nRxc8[+nBf1] #
1...nRb1 2.nRe1 nBd5+ 3.rRKh3 nBe6+ 4.nRxe6[+nBc8]+ nBxe6[+nRh1] #

Echo mates
Diagonal-orthogonal correspondence
C+ by Popeye

Radial Leaper (RK):

Is a unit which moves by jumping over another unit of opposite colour (called a hurdle) in the way that the geometrical distance between destination square and the hurdle square (in any direction) is the same than the distance between the RK square and the hurdle square.

(Example: black RKd6 can move through white hurdle Kg1 to the destination square b4 because d6-g1 = g1-b4)

Шахматная композиция = Shakhmatnaya Kompozitsiya magazine