

WCCI 2013-15

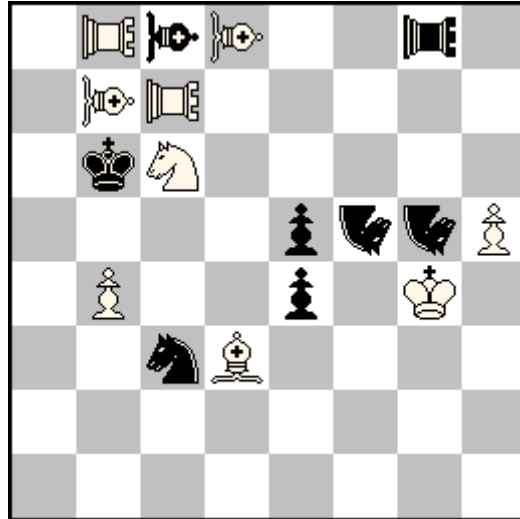
mario_parrinello@virgilio.it

1

Mario PARRINELLO

11th Tzuica Ty 2013

Prize



hs#4

(9+8) C+

B) ♞c3->f3

♞ = Nighthrider

♞♞ = Bishop-Locust

♞♞ = Rook-Locust

A) 1.Bb5 N×b7+ 2.Kg3 Nf5+ 3.Kg4 Se2 4.Bd3+ Nb7‡

B) 1.Sa5 N×c7+ 2.Kh3 Ng5+ 3.Kg4 Sg1 4.Sc6+ Nc7‡

Task: four switchbacks in both solutions. White battery-transformation.

WCCI 2013-15

mario_parrinello@virgilio.it

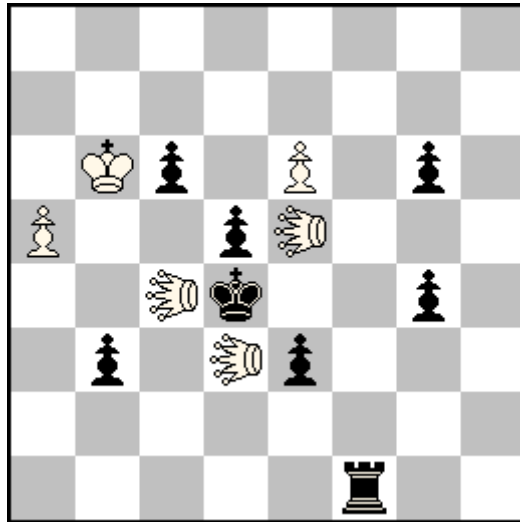
2

Mario PARRINELLO

3rd World Cup 2013

2nd Prize

dedicated to C.J.Feather



h≠2

(6+8)

C+

B) ♠d5→e4

C) ♠d5→c3

♞=Edgehog

A) 1.Rc1 EDb1 2.R×c4 EDh8‡

B) 1.Rf5 EDC1 2.R×e5 EDd1‡

C) 1.Rd1 EDh5 2.R×d3 EDa4‡

Cyclic Zilahi. Cyclic exchange of functions between the three Edgehogs (captured, guard, mates) and 6 characteristic long movements to the board edge.

WCCI 2013-15

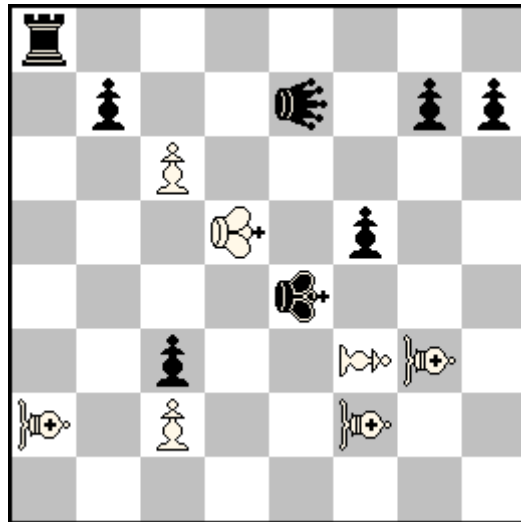
mario_parrinello@virgilio.it

3

Mario PARRINELLO

Julia's Fairies TTy 2013

1st Prize



hs#3

(7+8)

C+

3 sols.

♁ = Siren

♁♁ = Poseidon

♁ = Nereide

♁ = Marine pawn

1.NE_{f4} SIf₆ 2.POd₆+ POe₅+ 3.POd₇+ SId₆‡

1.NEe₃ SIc₇ 2.POc₅+ POd₄+ 3.POb₅+ SI×c₆-c₅‡

1.NEc₄ Sid₇ 2.POe₆+ POd₅+ 3.POf₇+ SIe₆‡

Creation of Nereid/Poseidon battery three times. Specific marine mates by Siren which enters the squares vacated by the white Poseidon at W3.

WCCI 2013-15

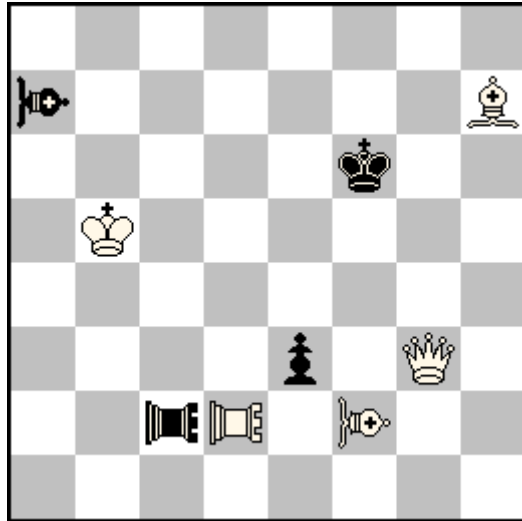
mario_parrinello@virgilio.it

4

Mario PARRINELLO

A. Petkov-100 MT 2014-15

2nd Prize



hs#3

(5+4)

C+

B) ♖h7

KoBulKings

♗♗ = Bishop-Locust

♖♖ = Rook-Locust

- A) 1.Qg7+ K×g7 [b5=rQ] 2.rQb7+ e×d2 [b7=rLR]
3.B×c2+ [g7=rLR] LB×f2-g1 [b7=rLB]‡
- B) 1.Qg6+ K×g6 [b5=rQ] 2.rQd3+ e×f2 [d3=rLB]
3.R×a7+ [g6=rLB] LR×d2-e2 [d3=rLR]‡

Reciprocal creation of fairy-batteries and exchange of functions between the black and white Locust-family pieces in an extremely economical Meredith position.

WCCI 2013-15

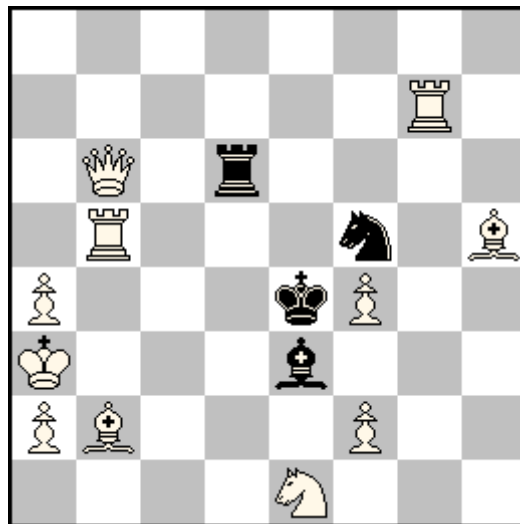
mario_parrinello@virgilio.it

5

Mario PARRINELLO

SuperProblem 142nd TTy 2015

1st-2nd Prize e.a. - 1st-2nd Place e.a.



hs#3

(11+4)

C+

B) ♔b6→d2
Take & Make

- A) 1.Bd1 R×d1(Rf3) 2.Ra7 Sd6 3.Q×d6(Qe8)+ B×a7(Be7)‡
B) 1.Ra7 B×a7(Be7) 2.Bd1 Se3 3.Q×e3(Qg2)+ R×d1(Rf3)‡

Reciprocal creation of black battery by the same black pieces (Rd6 and Be3). Orthogonal-Diagonal transformation.

WCCI 2013-15

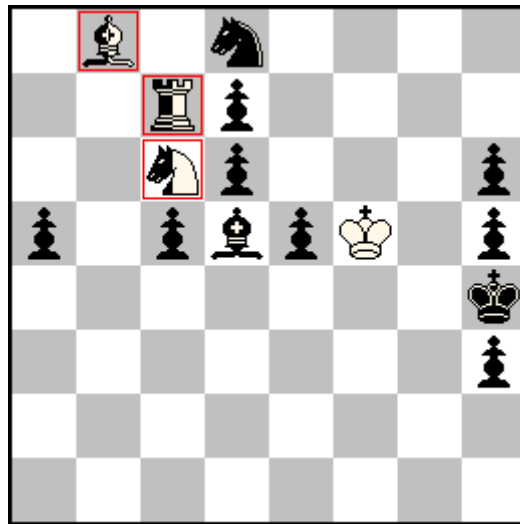
mario_parrinello@virgilio.it

6

Mario PARRINELLO

1st Riga Black Balsam TTy 2015

2nd Prize



h≠2 (1+11+3) C+

B) ♞h5→g3

C) ♔h4↔♞h5

□=Half-neutral pieces

A) 1.nhBxc7=bh nhSxa5=wh 2.hBxa5=nh nhBe1=wh‡

B) 1.nhRxc6=bh nhBxd6=wh 2.hRxd6=nh nhRxh6=wh‡

C) 1.nhSxb8=bh nhRxd7=wh 2.hSxd7=nh nhSf6=wh‡

Cyclic Zilahi with cyclic reciprocal captures (all moves by the half-neutral pieces).