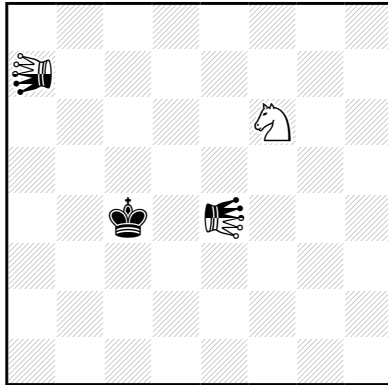


Kostěj Šoulivý

II. Prize A. Ettinger MT
C 30. 10. 2013



H#2 supercircle (1+1+2)
C+ 5.1.1.1 **1**

white: Sf6

black: Kc4

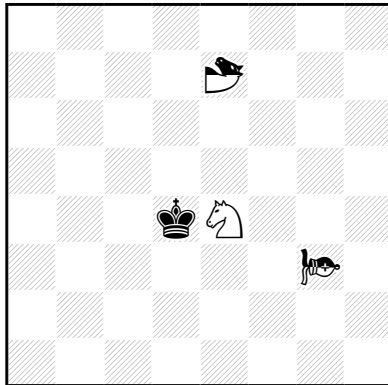
neutral: locust La7, leo LEe4

1.Kc4-d3 Sf6*e4 [+nLEd4] 2.Kd3*e4 [+wSe7] nLa7*d4-e3
[+nLEe8] #
1.nLEe4-b7 nLa7*b7-c7 [+nLEd4] + 2.Kc4*d4 [+nLEc4] nLc7*c4-
c3 [+nLEg7] #
1.nLEe4-d5 Sf6*d5 [+nLEb6] 2.Kc4*d5 [+wSg5] nLa7*b6-c5
[+nLEh5] #
1.nLEe4-e3 nLa7*e3-f2 [+nLEd5] 2.nLf2*f6-f7 [+wSe6] nLEd5*f7
[+nLb3] #
1.nLEe4-e7 nLa7*e7-f7 [+nLEc5] + 2.nLf7*f6-f5 [+wSe2]
nLf5*c5-b5 [+nLEf1] #

kostej.soulivy@seznam.cz

Kostěj Šoulivý

60 Šachové umění 8/2013



H#2 supercirce (1+1+2)
C+ 4.1.1.1 **2**

white: Se4

black: Kd4

neutral: vao VAg3, gnu GNe7

1.Kd4*e4 [+wSg2] nVAg3-b8 2.nGNe7*b8 [+nVAc6] nGNb8*c6
[+nVAh1] #

1.Kd4*e4 [+wSc6] nVAg3-f4 2.nGNe7*f4 [+nVAg2] nGNf4*g2
[+nVAa8] #

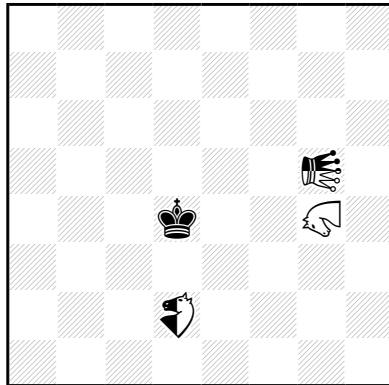
1.nGNe7-h6 nGNh6*g3 [+nVAf6] + 2.nGNg3*e4 [+wSb2] nGNe4*f6
[+nVAa1] #

1.nGNe7-h8 Se4-f6 2.nVAg3-e5 nVAe5*h8 [+nGNb2] #

kostej.soulivy@seznam.cz

Kostěj Šoulivý

290 Pat a mat 85/2013



H#2 supercirce (1+1+2)
C+ 4.1.1.1 **3**

white: zebra Zg4

black: Kd4

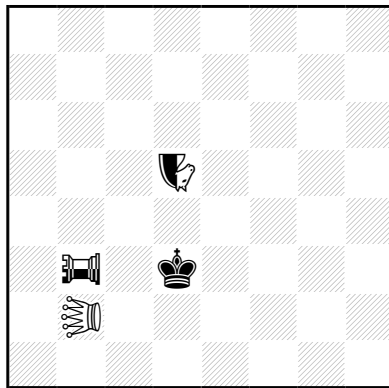
neutral: leo LEg5, squirrel SQd2

1.nSQd2-c4 nLEg5-e7 2.Kd4*c4 [+nSQb5] Zg4*e7 [+nLEf8] #
1.Kd4-e5 nLEg5-f5 2.Ke5*f5 [+nLEc1] Zg4*d2 [+nSQg4] #
1.Kd4-e3 Zg4-e7 2.nLEg5-b5 Ze7*b5 [+nLEa6] #
1.Kd4-c3 Zg4*d2 [+nSQf5] 2.nLEg5-g6 Zd2*f5 [+nSQd2] #

kostej.soulivy@seznam.cz

Kostěj Šoulivý

III. Prize Julia's Fairies
2013/III



H#2 supercircle (1+1+2)
C+ 4.1.1.1 **4**

white: contragrasshopper CGb2

black: Kd3

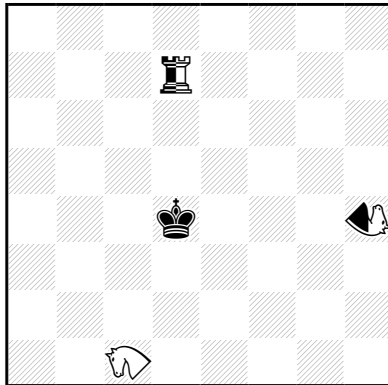
neutral: nightrider Nd5, empress EMb3

1.Kd3-c4 CGb2-b4 2.nNd5*b4 [+wCGf4] nEMb3*b4 [+nNe4] #
1.Kd3-e2 nNd5-h3 2.nEMb3*h3 [+nNf2] nEMh3*f2 [+nNc2] #
1.Kd3-c2 nNd5-f4 2.nNf4*b2 [+wCGf2] nEMb3*b2 [+nNe2] #
1.nNd5-c3 CGb2-b5 2.nEMb3*b5 [+wCGg3] nEMb5*c3 [+nNf3] #

kostej.soulivy@seznam.cz

Kostěj Šoulivý

6734 Phénix 231/2013



H#2 supercirce (1+1+2)
C+ 4.1.1.1 **5**

white: rose Rc1

black: Kd4

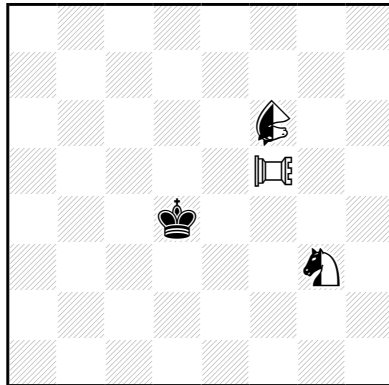
neutral: Rd7, bison (camel + zebra) BIh4

1.Kd4-e4 nBIh4-e3 2.Ke4*e3 [+nBIId3] nRd7*d3 [+nBIh5] #
1.nRd7-b7 ROc1-e6 + 2.nBIh4*e6 [+wROf2] nBIe6*b7 [+nRd3] #
1.nRd7-g7 ROc1-b3 + 2.Kd4-d5 nBIh4*g7 [+nRc5] #
1.nRd7-f7 ROc1-c5 2.Kd4*c5 [+wROa3] nBIh4*f7 [+nRb5] #

kostej.soulivy@seznam.cz

Kostěj Šoulivý

KŠ4 feenschach 208/2014



H=2 supercirce (1+1+2)
C+ 5.1.1.1 **6**

white: pao PAf5

black: Kd4

neutral: Sg3, diagonalspiralspringer DSf6

1.Kd4-c4 nSg3-e4 2.nDSf6*e4 [+nSd4] PAf5-f4 =
1.Kd4-d3 PAf5-f3 2.nDSf6*f3 [+wPAe3] PAe3*g3 [+nSe3] =
1.Kd4-c5 nDSf6-e5 + 2.nSg3*f5 [+wPAD5] PAD5*f5 [+nSd5] =
1.nDSf6-e4 PAf5-g5 2.nSg3*e4 [+nDSf4] PAg5-g4 =
1.nDSf6-g5 nSg3-h5 2.Kd4-e5 PAf5*h5 [+nSf5] =

kostej.soulivy@seznam.cz