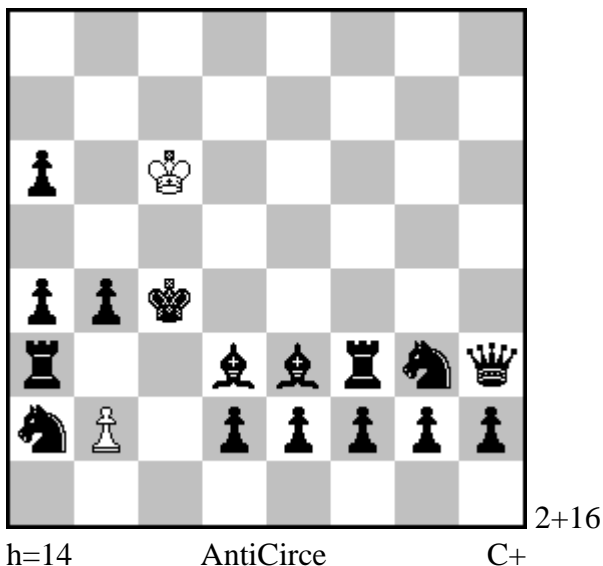


Entries for WCCI and FIDE-Album 2013-15

Klaus Wenda

Strate Gems 72/2015 FA1491
(Correction of FA1391 SG 2014)



[abbreviation of pieces in German K,D,T,L,S,B]

**1.Sc3! b:c3(c2) 2.d1S c:d3(d2) 3.e1S d:e3(e2) 4.f1S e:f3(f2) 5.g1S f:g3(g2)
6.h1S g:h3(h2) 7.Sh-g3 h:g3(g2) 8.Sg-f3 g:f3(f2) 9.Sf-e3 f:e3(e2) 10.Se-d3
e:d3(d2) 11.Sc3 d:c3(c2) 12.b3 c:b3(b2) 13.Kb4 b:a3(a2) 14.Ka5 a3 patt**

1.Tc3? b:c3(c2) ...13.Kb4??

Theme:

„Querexzelsior“ & return b2-h2-b2-a2

5-fold promotion into black S

Task

Entry G 1 for WCCI and FIDE-Album 2013-15, Section Fairies

Klaus Wenda

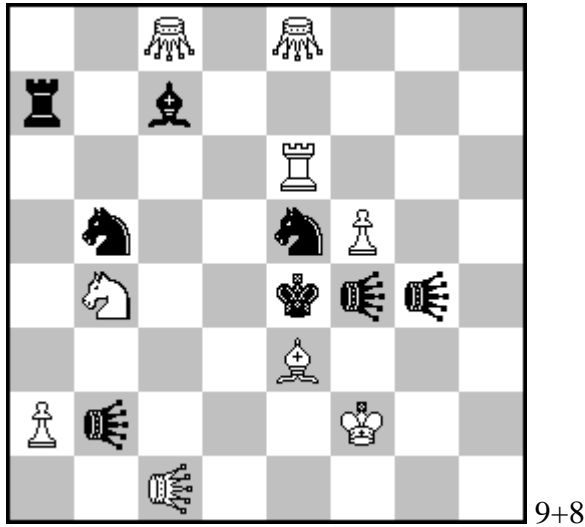
Rasumofskygasse 28, 1030 Vienna, Austria

kreuzschach@a1.net

Entries for WCCI and FIDE-Album 2013-15

Klaus Wenda

feenschach 211/2015, Nr. 11121



#16

C+ (popeye)

engl. Equistopper = QE c1, b2, f4, g4; Grashüpfer c8,e8

[abbreviations in German notation]

**1.Sc6! [threat 2.T:e5#] Kd5 2.Se7+ Ke4 3.Sg6 Kd5 4.S:f4+ Ke4 5.Sg6 6.Se7+
7.Sc6 8.Sb4+ Ke4 9.a4! [threat QEd3#] QEg-f4 10.Sc6 11.Se7+ 12.Sg6
13.S:f4+ Ke4 14.Sd3 Kd5 15.Sb4+ Ke4 16.QEd3#**

...5.Sd3? QEg:d3!

...9.a3? T:a3!

...14.QEd3+? QEb:d3!

...9.a4 QEg:f5? 10.QEd3#!

(QEf5 cannot move)

1.QEd3+? QEb/QEf/QEg:d3!

S - walk b4-c6-e7-g6-f4-d3 and back to b4

Task

(T:e5 must be a doublecheck otherwise

1.Sc6 ~ 2.T:e5+? QEg:e5! would be a refutation)

Entry G 2 for WCCI and FIDE-Album 2013-15 Fairies

Klaus Wenda

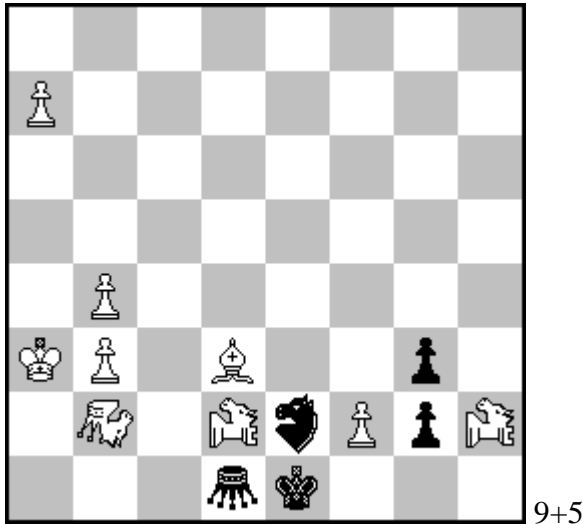
Rasumofskygasse 28, 1030 Vienna. Austria

kreuzschach@a1.net

Entries for WCCI and FIDE-Album 2013-15

Klaus Wenda

Die Schwalbe 273/2015 Nr.16356



hs#4 2 solutions C+ (WinChloe)

Grashüpfer d1, MOA e2
Andernach-Grashüpfer b2 =AG
Andernach-Turmlion d2,h2=ATL

[abbreviations in German notation K,D,T,L,S,B]

**a) 1.a7-a8AG! MOe2-g1 [g2-g1MO?] 2.ATLd2:g2(Bf2=s)! f2-f1AG [f2-f1G?]
3.ATLh2-e2(ATLg2=s) MOg1-h3
4.AGa8-h1(ATLg2=w)+ AGf1:d3(ATLe2=s)#**

**b) 1.a7-a8G! g2-g1MO [MOe2-g1?] 2.ATLh2:e2(Bf2=s)! f2-f1G [f2-f1AG?]
3.ATLd2-g2(ATLe2=s) MOg1-h3 4.Ga8-h1+ Gf1:d3#**

Promotion AG-AG respective G-G in the 2nd sol.
White must take care that the squares a2/d2 are guarded.

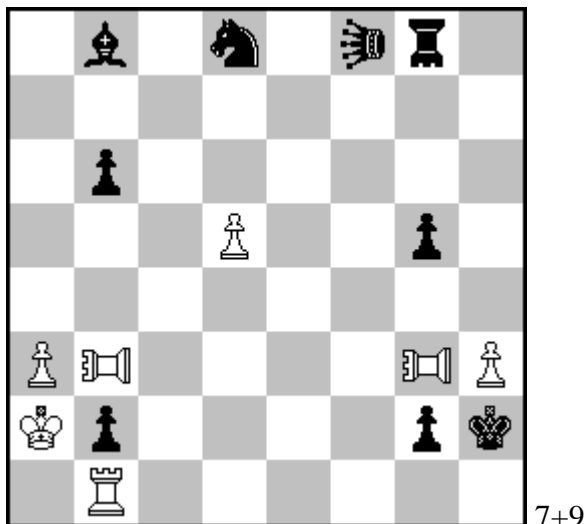
Entry G 4 for WCCI and FIDE-Album 2013-15 Fairies

Klaus Wenda
Rasumofskygasse 28, 1030 Vienna, Austria
kreuzschach@a1.net

Entries for WCCI and FIDE-Album 2013-15

Klaus Wenda

harmonie-aktiv 120/2014, Nr.2059



hs#4 b) sBb6→a7 C+ (popeye)

Doppelturmhüpfen(=DTH) g8 PAO b3,g3 LEO f8

[abbreviations in German notation K,D,T,L,S,B]

a) 1.PAg-c3! Sc6 2.d:c6 Ld6 3.c7 LEg7 4.c8DTH+ DTHc6#

b) 1.PAg-e3! Se6 2.d:e6 Lb4 [no check!] 3.e7 Lf4 4.e8DTH+ DTHe4#

Theme:

Cross-doublecheck by one DTH each in the 4th move of White & Black.

Entry G 5 for WCCI and FIDE-Album 2013-15 Fairies

Klaus Wenda

Rasumofskygasse 28, 1030 Vienna, Austria

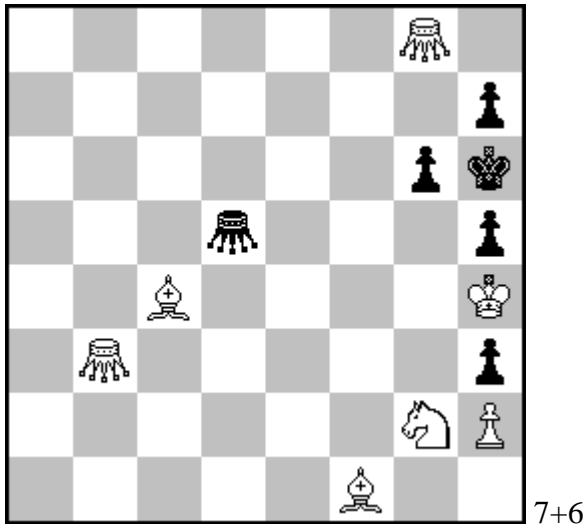
kreuzschach@a1.net

Entries for WCCI and FIDE-Album 2013-15

Klaus Wenda

Kjell Widlert zum 65.Geburtstag gew.

feenschach 204/2013, Solution 209/2014, S.640
(no award has appeared up to now)



ser-s#10 Antiandernachschach C+ (popeye)

AndernachG b3,g8; d5

[abbreviations in German Notation K,D,T,L,S,B)

**1.Lf1-d3(=sL)! 2.AGb3-e3(=sAG d3=wL) 3.Ld3-f1(=sL) [return]
4.Lc4:f1(=wL) 5.AGg8-c4(=sAG d5=wAG) 6.AGd5-b3(=sAG c4=wAG)
7.AGc4-a2(=sAG b3=wAG) 8.AGb3-f3(=sAG e3=wAG)
9.AGe3-g3(=sAG f3=wAG) 10.AGf3:h3(=wAG g3=wAG) Zugzwang
AGa2:h2(=sAG g2=sS)#**

Thematical try:

1.Lc4-d3(=sL)? 2.AGb3-e3(=sAG d3=wL) 3.Ld3-b5(=sL) 4.Lf1:b5(=wL)
5.AGg8-c4(=sAG d5=wAG) usw... 10.AGf3:h3(=wAG g3=wAG) Zugzwang
AGa2:h2(=sAG g2=sS)+ 11.AGh3-f1(=sAG g2=wS)!!

In the key one finds an Antizielelement while the wL leaves the square f1 which must be occupied in the final mating position. Thus the wL returns to f1 after a temporary change of colour.

Entry G 6 for WCCI and FIDE-Album 2013-15 Fairies

Klaus Wenda
Rasumofskygasse 28, 1030 Vienna, Austria
kreuzschach@a1.net