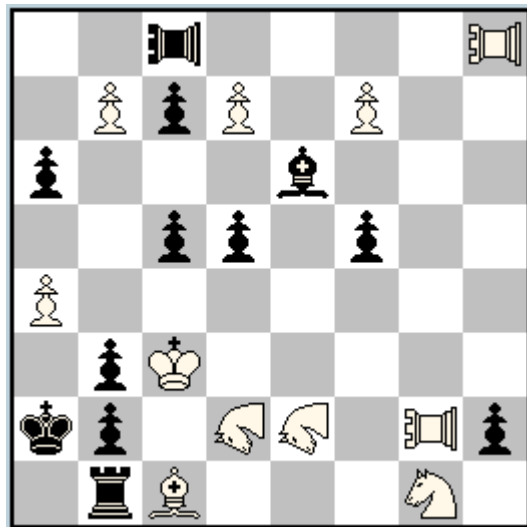


**1 (G) - Juraj Lörinc**  
 1st Prize Julia's Fairies 2013/I



#2 (11+12) C+

Anticirce type Cheylan  
 2+0 camelrider  
 2+1 rook-kangaroo-lion

In the initial position CRd2 guards a1, a3. Pb2 is pinned by RKLg2.

All keys provide the second hurdle to the 8th row, threatening directly RKL a8# (in this mate, a1 and a3 are guarded by RKL a8, not CRd2).

Black defends by placing the third piece onto the 8th row, interfering with the threatened move.

But as a consequence, three of possible rebirth squares of promoted Pb2 are blocked, allowing mate by precise battery mate given by CR e2, blocking the remaining 4th rebirth square. This battery check unpins Pb2, but the pawn remains immobile nevertheless.

This is a mechanism of carousel change Z-32-33.

Then a departure of RKL c8 defends by removing one necessary hurdle, but the error is unblocking of rebirth square of capturing CRs, always the promoted ones, specifying the keys. This gives additional Z-31-13.

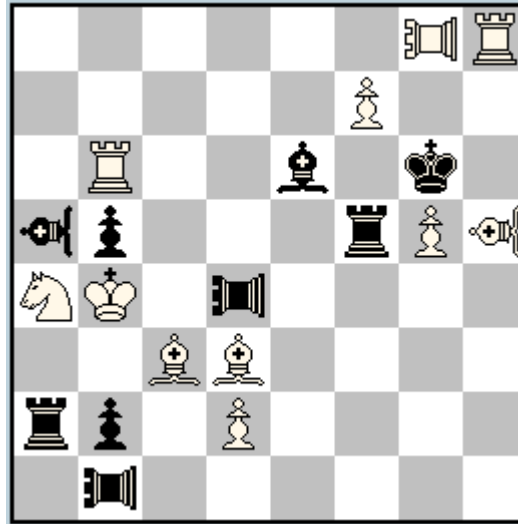
Overall, there is an (Anticirce + fairy pieces)- typical strategy with emphasis on promotions (keys, defences, avoided moves) and additional effects, with duel of Ph2 and CR e2 and formal change theme Z-33-46 including carousel change.

Publication: 288 Julia's Fairies 2.4.2013

key	threat	1...hxg1Q (Qd8) <b>a</b>	1...hxg1S (Sb8) <b>b</b>	1...hxg1B (Bf8) <b>c</b>	1...RKLC4 <b>d</b>	refutation
1.f8CR?	2.RKL a8#	2.CRxb3 (CRb8)# <b>A</b>	2.CRx d5 (CRd8)# <b>B</b>	-	2.CRxc7 (CRc8)# <b>X</b>	1...Bg8!
1.b8CR?	2.RKL a8#	2.CRx f5 (CRf8)# <b>C</b>	-	2.CRx d5 (CRd8)# <b>B</b>	2.CRbxc5 (CRc8)# <b>Y</b>	1...Ra1!
1.d8CR!	2.RKL a8#	-	2.CRx f5 (CRf8)# <b>C</b>	2.CRx b3 (CRb8)# <b>A</b>	2.CR8xc5 (CRc8)# <b>Z</b>	

## 2 (G) - Juraj Lörinc

1st Prize Denis Blondel MT C 31.1.2014



hs#3

(11+9) C+

1+1 bishop locust

1+2 rook locust

b) Pd2→c7

a) 1.B×b5 RL×d2-d1 2.S×b2 R×g5 3.Bd3+ RL×d3-d4#

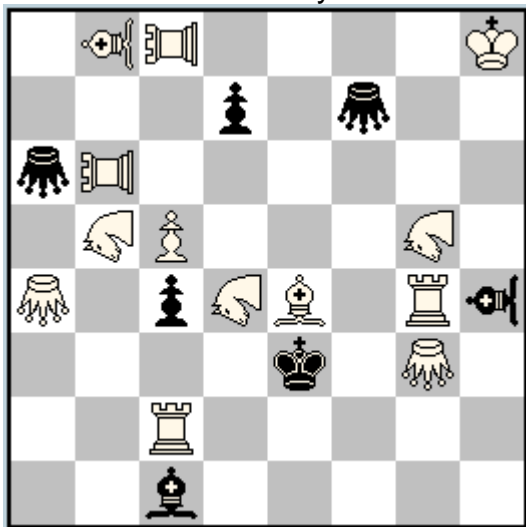
b) 1.R×b5 BL×c7-d8 2.B×b2 B×f7 3.Rb6+ BL×b6-a5#

D-O transformation of the strategy including:

- two active pins of black pieces in the critical position (after W3)
- two active pins of white pieces in the checkmate
- switchback of white checking linemover and black mating locust
- reciprocal exchange of functions:
  - wRLg8 – wBLh5
  - bRf5 – bBe6
  - bRLd4 – bBLa5
  - wBd3 – wRb6
  - wBc3 – wSa4

### 3 (G) - Juraj Lörinc

1st Prize Problemist Ukrainy 10 JT C 31.1.2014



#2 (13+7) C+

Transmuting kings

2+2 grasshopper, 2+0 pao, 1+1 vao, 0+3 nao

Carousel change extended by presence of "missing mate" in set play as well as in threat (i.e. supplemented both vertically and horizontally in the table). This includes:

- Z-4(3222)-33
- 3x le Grand
- 3x reciprocal change

All thematical mates are by antibattery on the same square.

The underlying strategy involves switching 6 lines aimed at potential flights of bK:

- c8 → c5 ← e3
- b8 → e5 ← e3
- b6 → h6 ← e3

First triple of lines cross at squares c7, c6, d6, to which the keys are played.

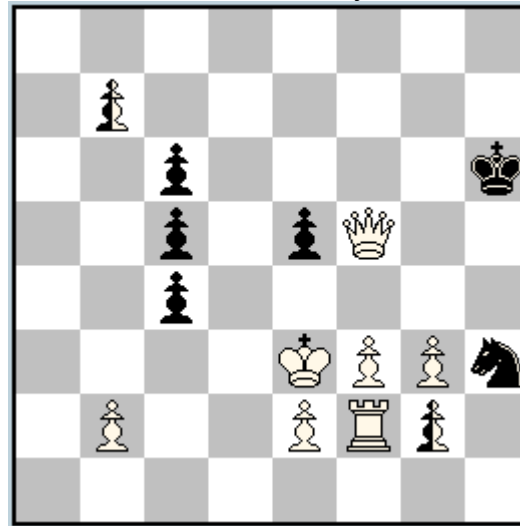
Second triple of lines are switched off by departure of hurdles from d4, e4, g5.

	threat	1...Gc6 <b>a</b>	1...d6 <b>b</b>	1...Gc7 <b>c</b>	1...Gb3	
set		2.Bf3# <b>A</b>	2.NAdf3# <b>B</b>	2.NAgf3# <b>C</b>		
1.c6?	2.Bf3# <b>A</b>	-	2.NAgf3# <b>C</b>	2.NAdf3# <b>B</b>	!	
1.NAd6?	2.NAdf3# <b>B</b>	2.NAgf3# <b>C</b>	-	2.Bf3# <b>A</b>	2.PAe8#	1...Bb2!
1.NAbc7!	2.NAgf3# <b>C</b>	2.NAdf3# <b>B</b>	2.Bf3# <b>A</b>	-	2.PAe8#	

Award: Problemist Ukrainy Spec. No 12, VII 2014

#### 4 (G) - Juraj Lörinc

2nd Honourable Mention László Ányos 81 JT C 31.10.2013



hs#3,5

(7+6+2) C+

Circe

2 neutral pawns

b) wKe3 ↔ bSh3

a) 1...**g1nS** 2.**b8nB** nS×f3 3.nB×e5(Pe7) nBf6 4.R×f3(nSg8)+ nS×f6(nBc1)#

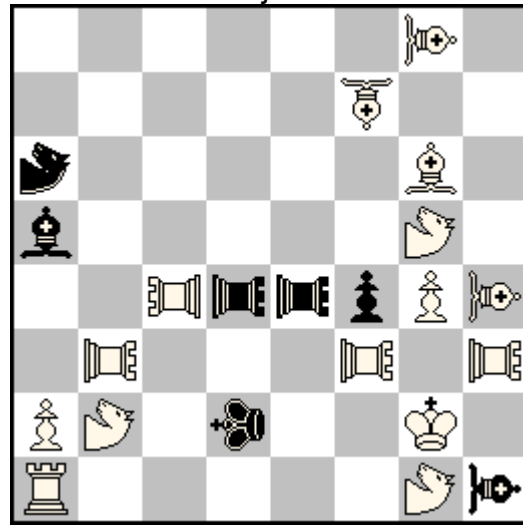
b) 1...**g1nB** 2.**b8nS** nBh2 3.nS×c6(Pc7) nSe7 4.R×h2(nBf8)+ nB×e7(nSg1)#

Analogy of two phases with starring neutral pieces

- reciprocal promotions of neutral pawns SB/BS
- neutral B/S creates sarcophagus for other neutral piece
- check to black in W4 by rebirth of captured neutral S/B (with blocking by wR)
- countercheck to white in B4 by rebirth of neutral B/S captured by S/B
- neutral S/B capturing in the B4 also guards wK flight

### 5 (G) - Juraj Lörinc

3rd Prize Peter Gvozdják 50 JT C 16.11.2015



#2

(15+7) C+

4 solutions

Transmuting kings

= Antelope (3:4 Leaper)

= Nightrider Lion

= Bishop Lion

= Pao

= Rook Lion

4-fold Rice cycle in the form of 4 solutions

All keys by the same rook lion (option) give 2 additional flights (thematical defences)

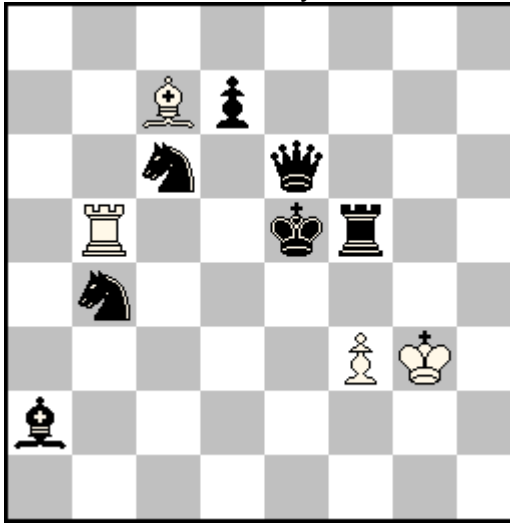
All antibattery mates on the same square

All mating moves unguard potential flights of black transmuting king by hurdle removal

Award: [www.soks.sk](http://www.soks.sk), 30.12.2015

	threat	1...Ke3 <b>a</b>	1...Kd3 <b>b</b>	1...Kc2
<b>1.RLh7!</b>	2.RLh2#	2.NLc3# <b>A</b>	2.RLc3# <b>B</b>	2.Bxe4#
<b>1.RLh5!</b>	2.RLh2#	2.RLc3# <b>B</b>	2.ANc3# <b>C</b>	2.Bxe4#
<b>1.RLh6!</b>	2.RLh2#	2.ANc3# <b>C</b>	2.PAc3# <b>D</b>	2.Bxe4#
<b>1.RLh8!</b>	2.RLh2#	2.PAc3# <b>D</b>	2.NLc3# <b>A</b>	2.Bxe4#

**6 (G) - Juraj Lörinc**  
3rd Prize 14th Saké Tourney Bern C 27.8.2014 (v)



h#2 (4+6)

C+

Back-to-Back

4.1.1.1

1.d5 Rd4 2.Sd3 R×e6#  
1.Qd5 Be8 2.Se7 Bd6#

1.Rf6 Bd5 2.Sbd4 Bf4#  
1.Qf6 Rd6 2.Scd5 Re4#

HOTF-style h#2, in the initial position Sb4 and Sc6 are pinned by Rb5 and Bc7 respectively.

In the first pair of solutions, bP/bQ enter d5 in B1 and wR/wB are moving in both W1 and W2 mates, supported by the other white piece wB/wR in the shape of knight. wR/wB is transformed into K/Q.

In the second pair of solutions there is D-O echo: bR/bQ enter f6 in B1 (selfblock) wB/wR unpin Sb4/Sc6, which then in turn change movement of firing pieces of newly formed batteries to knight. Double-check mates.

**Back-To-Back:** When pieces of opposite colors stand back-to-back with each other on the same file (white piece is on the top of black), they exchange their mobilities. A pawn on the first rank cannot move. Any piece can make an en passant capture when it has got a movement of Pawn.

This version published in Pat a Mat 90, XII 2014.