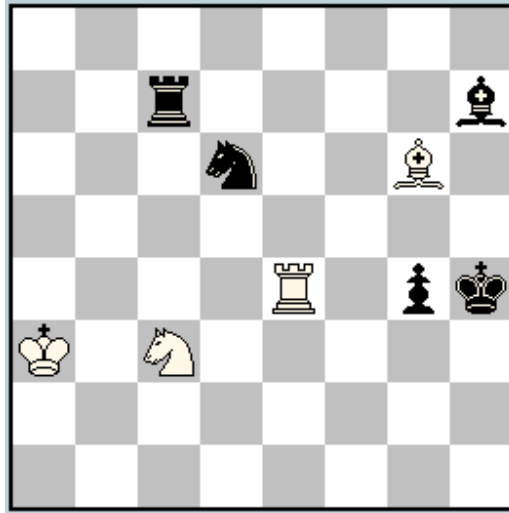


# WCCI 2013-2015 Fairies

1

Pierre TRITTEN  
[pierre.tritten@sfr.fr](mailto:pierre.tritten@sfr.fr)

5<sup>th</sup> Bulgarian Wine TT Berne 2014 – 1<sup>st</sup>-2<sup>nd</sup> prize



White : Ka3 Re4 Bg6 Sc3  
Black : Kh4 Rc7 Bh7 Sd6 Pg4

h‡2 (4+5) C+ WinChloé  
SneK Chess  
3.1.1.1

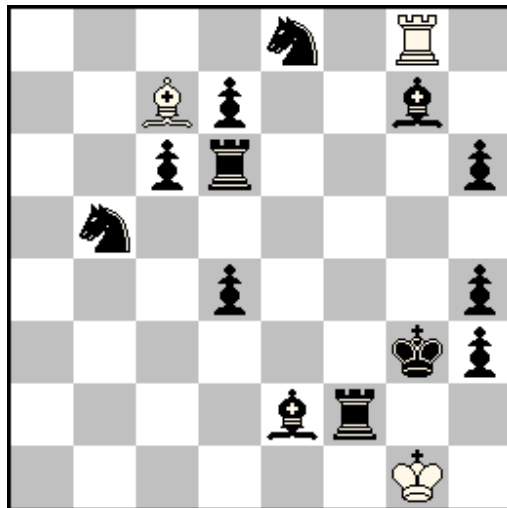
## Solution :

1.R×c3+(rSa3) rSb1 2.Rh3 R×g4‡  
1.S×e4(wRg6) Se2 2.Sg5 Rh6‡  
1.B×g6(wBc3) Re3 2.Bh5 Bf6‡

- Cyclic Zilahi
- Self-block by capturing black piece

Pierre TRITTEN  
[pierre.tritten@sfr.fr](mailto:pierre.tritten@sfr.fr)

Julia's Fairies 2015 – n° 963 (dec. 15)



White : Kg1 Rg8 Bc7

Black : Kg3 Rd6 Rf2 Bg7 Be2 Se8 Sb5 Pd7 Pc6 Ph6 Pd4 Ph4 Ph3

sh‡5 (3+13) C+ WinChloé  
 2.1.1...

**Solution :**

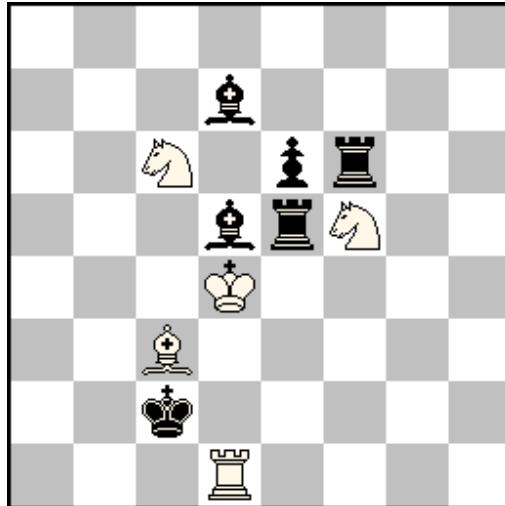
1.Bg4 2.Be5 3.Rg6 4.Bf3 5.Rg4 B×e5‡  
 1.Rf4 2.Rg6 3.Be5 4.Rf3 5.Bf4 R×g6‡

- "Hesitation Grimshaw"
- Cycle of self-unpins and self-pins
- Interchange of 2<sup>nd</sup> and 3<sup>rd</sup> moves
- Self-block by Pelle move
- Diagonal orthogonal echo
- Pin mates

### 3

Pierre TRITTEN  
[pierre.tritten@sfr.fr](mailto:pierre.tritten@sfr.fr)

Orbit 2013 – 1<sup>st</sup> Prize



White : Kd4 Rd1 Bc3 Sc6 Sf5  
Black : Kc2 Rf6 Re5 Bd7 Bd5 Pe6

h‡2 (5+6) C+ WinChloé  
2.1.1.1  
Take & Make

#### **Solution :**

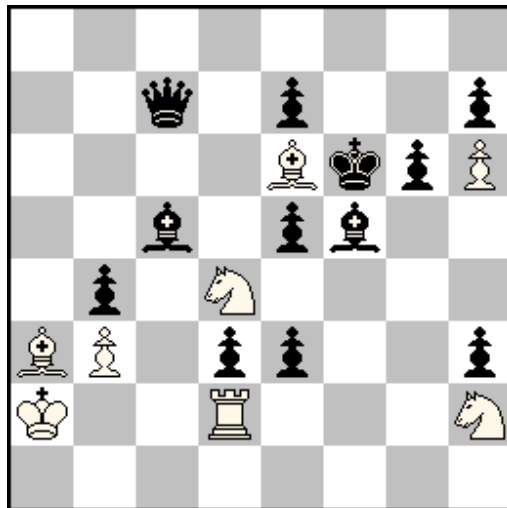
1.Rf×f5-g7 K×e5-h5 2.K×c3-f6 R×d5-f3‡  
1.B7×c6-d8 K×d5-b7 2.K×d1-d7 B×e5-b5‡

“The D-O echo of subsequent line clearances is perfect to the point allowed by geometry of existing orthogonal and diagonal lines: B1 opens line for W1 that in turn clears line for B2 and opens line for W2. Note also that bK is checkmated on square vacated in B1 and the extended Zilahi is just a formal result of the employed strategy rather than an aim.”

Judge J. Lorinc

Pierre TRITTEN  
[pierre.tritten@sfr.fr](mailto:pierre.tritten@sfr.fr)

The Problemist of Ukraine 2013 – Prize



White : Ka2 Rd2 Be6 Ba3 Sd4 Sh2 Ph6 Pb3  
 Black : Kf6 Qc7 Bc5 Bf5 Pe7 Ph7 Pg6 Pe5 Pb4 Pd3 Pe3 Ph3

h‡2 (8+12) C+ WinChloé  
 3.1.1.1  
 Anticircé couscous

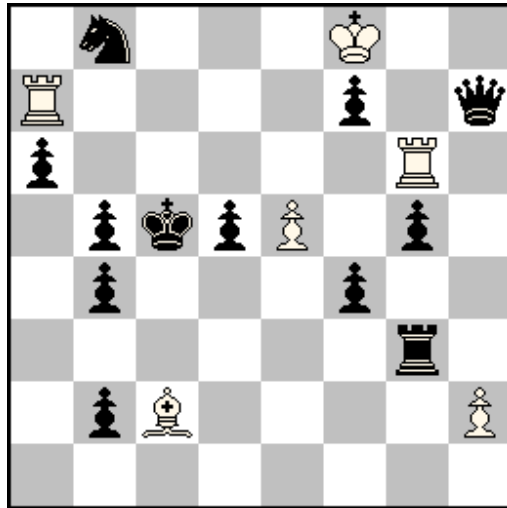
**Solution :**

1.e×d2(Sa1) Bc1 2.Sc2 S×c2(Sg8)‡  
 1.e×d4(Rg1) Rg2 2.Rc1 B×c1(Bh8)‡  
 1.b×a3(Bc1) Sdf3 2.Bb2 R×b2(Rf8)‡

- Cyclic Zilahi
- Cycle of captures
- Active sacrifice of promoted black piece for mating white piece

Pierre TRITTEN  
[pierre.tritten@sfr.fr](mailto:pierre.tritten@sfr.fr)

Julia's Fairies 2013/III – 6<sup>th</sup> HM



White : Kf8 Ra7 Rg6 Bc2 Pe5 Ph2  
 Black : Kc5 Qh7 Rg3 Sb8 Pf7 Pa6 Pb5 Pd5 Pg5 Pb4 Pf4 Pb2

h‡2 (6+12) C+ WinChloé  
 2.1.1.1  
 Take & Make

**Solution :**

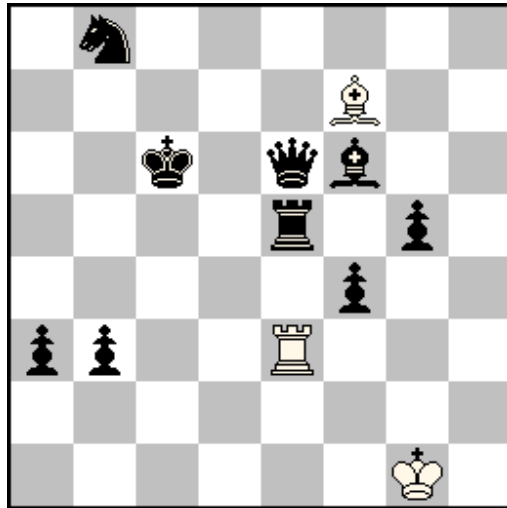
1.f×g6-b6 h×g3-e3 2.Q×c2-h7 R×h7-c2‡  
 1.f×g6-c6 h×g3-b3 2.Q×a7-h7 B×h7-a7‡

- Key giving a flight to BK, clearing and opening lines for B2 and W2
- Reciprocal captures, Zilahi and invisible captures by BQ
- Mates given on initial square of captured white piece

# 6

Pierre TRITTEN  
[pierre.tritten@sfr.fr](mailto:pierre.tritten@sfr.fr)

4<sup>th</sup> Bulgarian Wine TT Batumi 2013 – 2<sup>nd</sup> Prize



White : Kg1 Re3 Bf7  
Black : Kc6 Qe6 Re5 Bf6 Sb8 Pg5f4a3b3

h‡2 (3+9) C+ Popeye  
3.1.1.1  
Take & Make  
Anti Take & Make

### Solution :

1.R\*e3-e2[+wRe5] B\*e6-d5[+bQf5] + 2.K\*d5-f3[+wBe6] R\*f5-h3[+bQe4] #  
1.R\*e3-e4[+wRd3] B\*e6-d6[+bQd7] 2.K\*d6-e5[+wBc5] R\*d7-f5[+bQe6] #  
1.R\*e3-e5[+wRg3] B\*e6-d7[+bQf7] + 2.K\*d7-f5[+wBe8] B\*f7-h7[+bQe6] #

- Same piece captured at every move of each solution
- White Bishop helps black King reach its mating square