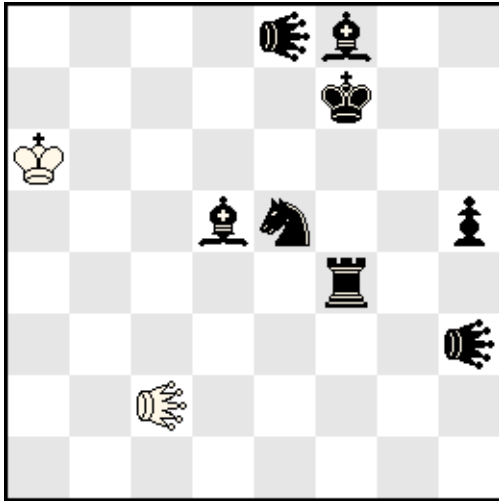


WCCI 2013-15 Fairies

(1)

Kjell Widlert

1st Prize Alaikov MT 2013



h#3 2 sol.

1+2 Andernach grasshoppers

C+

*(Andernach grasshoppers change the colour of the hurdle when they move; kings and neutrals excepted)*

1.Lb3 AGa4(wLb3)+ 2.Tc4 AGd4(wTc4) 3.AGh6(wBh5) Tc7#

1.Tf2 AGg2(wTf2)+ 2.Lf3 AGe4(wLf3) 3.AGg8(wLf8) Lxh5#

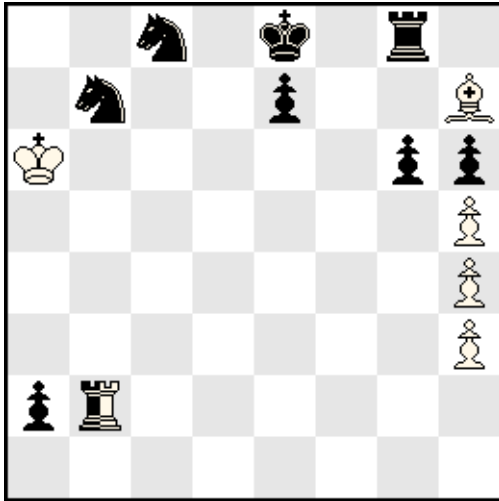
Double checks with Andernach-created batteries.

WCCI 2013-15 Fairies

(2)

Kjell Widlert

15664. Die Schwalbe 2013



s#7 Max

Neutral Tb2

C+

1.Lxg6+? Txg6+ 2.hxg6

1.nTb5? nTxh5 2.Lxg6+ Txg6+ 3.Kxb7

1.nTb4? nTxh4 2.nTh2??

1.nTb3 nTxh3 2.nTh2 nTb2 3.nTb4 nTxh4 4.nTh2 nTb2 5.nTb5 nTxh5 6.nTh2 nTb2  
7.Lxg6+ Txg6#

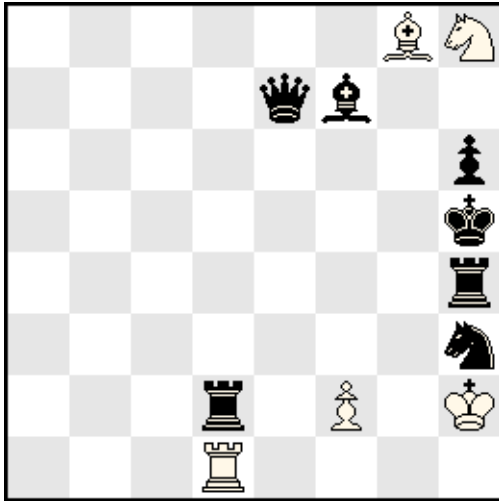
Three consecutive roundtrips by the same piece.

WCCI 2013-15 Fairies

(3)

Kjell Widlert

Prize ChessProblems.ca 5.TT 2013-14



h#4            Back-Home

b: Sh8 > g4

C+

*(Both sides must move a piece back to its square in the diagram when possible. This has precedence over checks to the opposing king, but not over checks to the own king.)*

a) 1.Lb3 Lc4 2.Td5 Ld3 3.Lxd1 f4 4.Lg4 Lg6#

b) 1.Td8 Td6 2.Ld5 Te6 3.Txg8 f3 4.Tg5 Txh6#

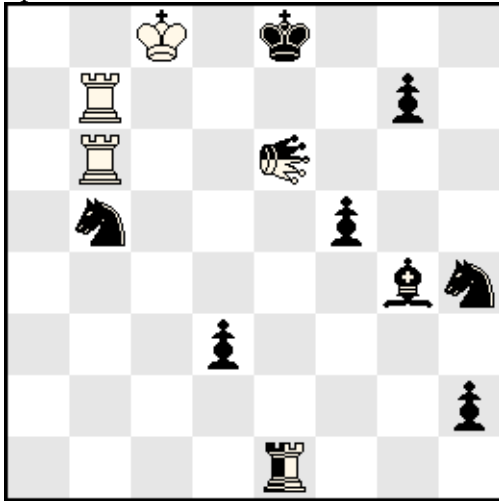
Three successive return-preventing interferences in each solution. Zilahi.

WCCI 2013-15 Fairies

(4)

Kjell Widlert

Special Prize Zabunov-85 MT 2013-14



hs#3 b: translation b1=a1 (1 step left)

AntiCirce Calvet

Neutral Leo e6

Neutral Te1

C+

a) 1. nLEe5 Lh5 2.Tg6 Sxg6>g8 3.nLExh5>h8+ Se7#

b) 1.nLEd2 Sh2 2.Th6 Lxh6>f8 3.nLExh2>h8+ Ld6#

(1.nLEd7? Lh6 2.Te6 Lf8 3.nLExg4>g8+ Ld6+ 4.Kb7!)

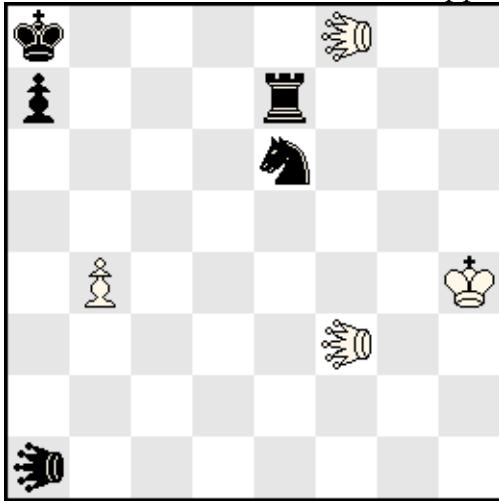
Zabunov theme: the front piece of one battery moves (with discovered check) to become the rear piece of another battery. Here the first battery is directed towards the black king, and the second towards the white king.

WCCI 2013-15 Fairies

(5)

Kjell Widlert

2nd Hon. Mention BCPS Grasshopper Centenary TT 2014



sh#10      2 sol.

2+1 Contragrasshoppers

C+

*(A Contra-G moves like a G, but over a hurdle on an adjacent square to any square beyond.)*

1.Sc7 2.Te2 3.Tb2 4.CGg7 6.Tg6 7.CGg2 9.Tb8 10.Se8, CGh1#

*(1.Sg7?)*

1.Sc5 2.Te1 3.Tb1 4.CGg1 6.Tg2 7.CGg8 9.Tb7 10.Se4, CGh8#

*(1.Sg5?)*

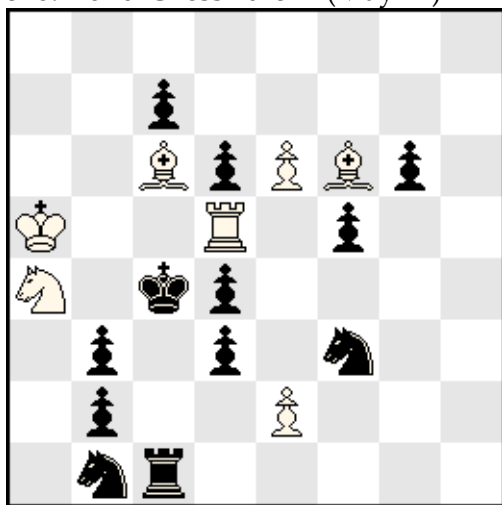
Withdrawal mate on one thematic line and creation of a pin on the other thematic line, with interchange of function in the second solution.

WCCI 2013-15 Fairies

(6)

Kjell Widlert

578. KoBulChess 2015 (May 14)



#5 Circe

C+

1.exf3(Sg8)? (> 2.Txd4(Bd7)#) Sxf6!

1.e4 (> 2.Lb5#) fxe4(Be2) 2.exf3(Sg8) Sxf6 3.fxe4(Be7) (> 4.Lb5#) Sxe4(Be2)

4.e3 (> 5.Txd4(Bd7)#) dxe3(Be2) 5.exd3(Bd7)#

3. – Sa3 4.Lb5+ Sxb5(Lf1) 5.Lxd3(Bd7)#

Consecutive albino.