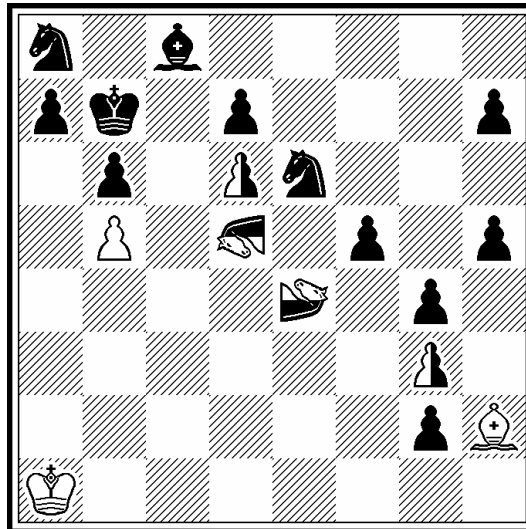


1  
 Franz Pachl  
 Die Schwalbe 2013



H#4 (3+12+4)

Anti circe

0.2.1...

Camel e4, Giraffe d5

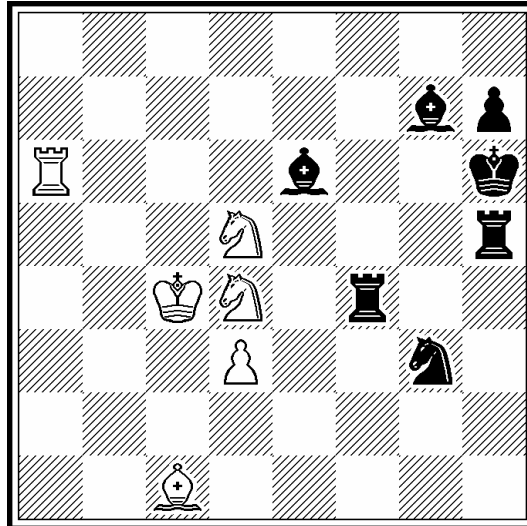
- a) 1. - nCA d1 2. Sf4 gxf4[nPf2]  
 3. f1=nG1 nG1e5 4. dxe5[nPe7] e8=nCA#
- b) 1. - nG1e1 2. Sc7 dxc7[nPc2]  
 3. c1=nCA nCAf2 4. gxf2[nPf7] f8=nG1#

2

Franz Pachl

12th Romanian-Tzui ca-Tourney 2014

1. Prize



HS#4½

(6+7)

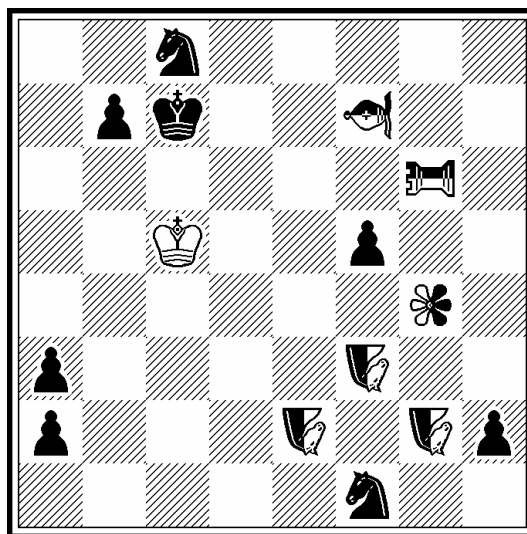
2 solutions

1. - Rxd5 2. Ba3 Rh4 3. Bd6 Bg4 4. Sf3!  
(Se6?) Rh5 5. Bf8+ Be6#

1. - Bxd4 2. Ra2 Bg8 3. Rd2 Rf7 4. Se7!  
(Sf4?) Bg7 5. Rh2+ Rf4#

3

Franz Pacht  
Die Schwalbe 2014



H#2

(1+8+6)

Take&Make-Schach

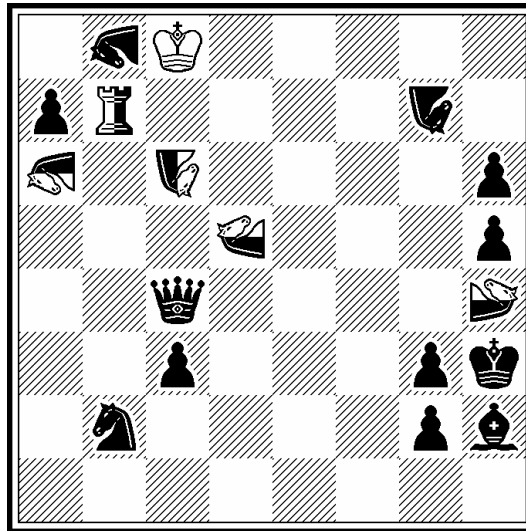
3. 1. 1. 1.

Gi raffe f7, Rose g4, Zebra g6

1. Sg3 nNxg3-f1+ 2. nZe3 nR0xe3-b5#

1. Sd2 nNxd2-f1+ 2. nGle3 nZxe3-a4#

1. Se3 nNxe3-f1+ 2. nR0e3 nGle3-g8#



H#3

(1+12+5)

Take&amp;Make-Chess

0. 3. 1. . .

Zebrarider d5, Giraffe a6 b8,

Camel h4, Nightrider c6 g7

1. - nRxb8-a4 2. Qxc6-b8+ nZRxb8-b7+

3. nCAe5 nG1xe5-d2#

1. - nRxc7-a4 2. Qxh4-g7 nZRxc7-b7+

3. nG1e5 nNxe5-d1#

1. - nRxb2-a4 2. Qxa6-b2 nZRxb2-b7+

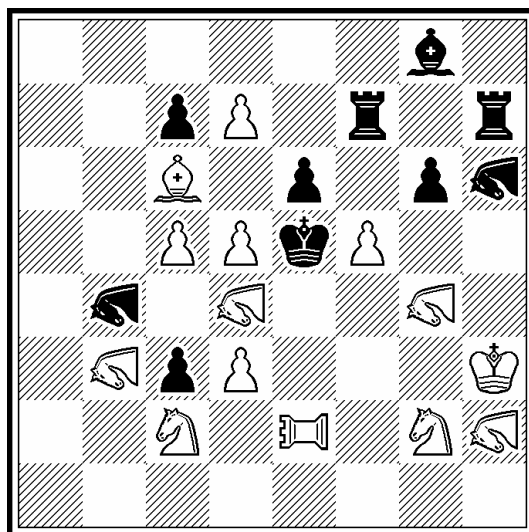
3. nNe5 nCAxe5-g6#

5

Franz Pachl

27<sup>th</sup> Spišská Borovička 2015

2. Prize



#2

(14+10)

Platzwechselcirce

Naob3 d4 g4 h2 b4 h6, Pao e2

1. d8=Q? (2. NAe3# A)

1. - NAbxd8(+wOb4) a 2. Sce3#B

1. - NAhxd8(+wOh6) b 2. Sge3# C

1. - Re7!

1. d8=PA? (2. Sce3# B)

1. - NAbxd8(+wPAb4) a 2. Sge3# C

1. - NAhxd8(+wPAh6) b 2. NAe3# A

1. - Rd7!

1. d8=NA! (2. Sge3# C)

1. - NAbxd8(+wNAb4) a 2. NAe3# A

1. - NAhxd8(+wNAh6) b 2. Sce3# B

Complete 3-fold Shedej-cycle

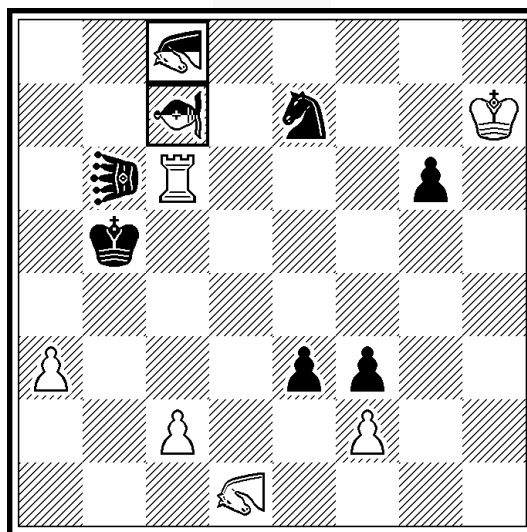
Mates and threats on the same square

6

Franz Pachl

1<sup>st</sup> RIGA BLACK BALSAM TT 2015

3. Prize



hs#4

(6+6+2)

Naod1, Leob6

Hal fneutral VA0c7, NA0c8

b) bPe3→h3

a) 1. Kh6 LEa7! (LEb7?) 2. nhVAa5=wh  
nhNAa4=bh 3. hVAe1=nh Ka5 4. c3+!  
(Rc3+?) nhVAd2=bh#

b) 1. Kh8 LEB7! (LEa7?) 2. nhNAa4=wh  
nhVAa5=bh 3. hNAg1=nh Ka4 4. Rc3+!  
(c3+?) nhNAe2=bh#