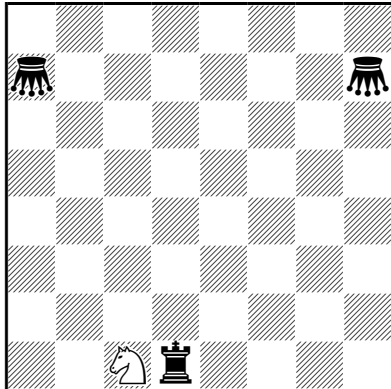


1 - Václav KOTĚŠOVEC

4. T.T. ChessProblems.ca 2013

1. Prize

2. Place WenigsteinerJahresPreis 2013



sh=12 (1+3) C+

4.1.1...

PlatzWechselCirce

royal Rook d1

♣=Grasshopper

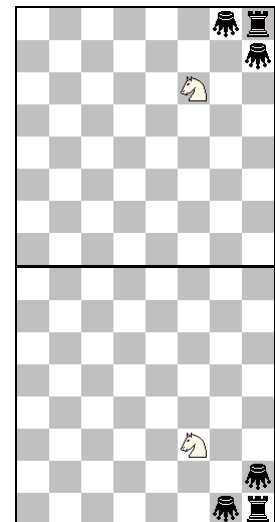
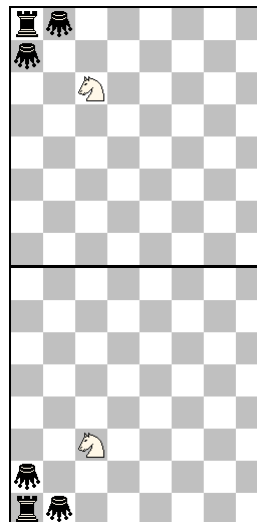
1.rRd6 2.rRa6 3.Ga5 4.rRc6 5.rR:c1(Sc6)
6.rRb1 7.rRb7 8.Ga7 9.Ga8 10.G:c6(Sa8)
11.rRb8 12.rR:a8(Sb8) S:c6(Gb8)=

1.rRd8 2.rRc8 3.rR:c1(Sc8) 4.rRc5 5.Gd4
6.rRe5 7.Gf6 8.rRe8 9.rRh8 10.rR:c8(Sh8)
11.rRg8 12.rR:h8(Sg8) S:f6(Gg8)=

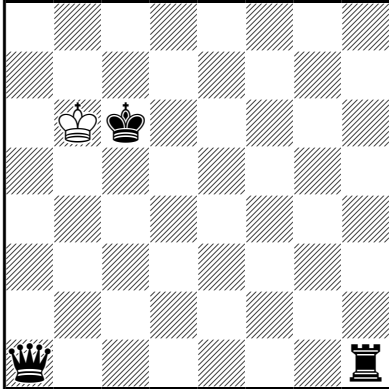
1.rRh1 2.rRh3 3.Gh2 4.rRc3 5.rR:c1(Sc3)
6.rRc2 7.rRb2 8.Ga2 9.Ga1 10.G:c3(Sa1)
11.rRb1 12.rR:a1(Sb1) S:c3(Gb1)=

1.rRd4 2.Ge3 3.rRg4 4.rRg3 5.Gh3 6.Gh2 7.Gf3
8.rRg1 9.rRh1 10.rR:c1(Sh1) 11.rRg1
12.rR:h1(Sg1) S:f3(Gg1)=

4-fold echo, four corners



2 - Václav KOTĚŠOVEC
380 Julia's Fairies 2013-III
2. Prize



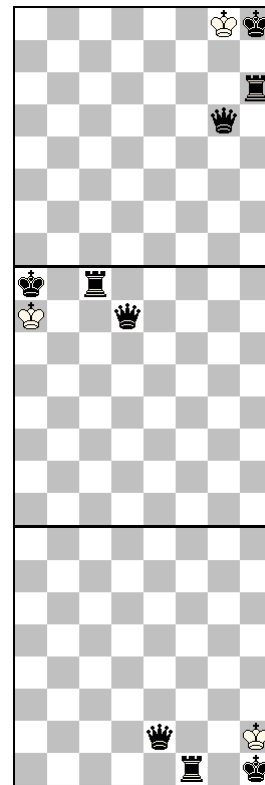
hs#9 (1+3) C+
 3.1.1...
 KÖKO

1.Kc5 Kd6 2.Kd5 Qd4+ 3.Ke4 Qe3 4.Kd5 Ke5
 5.Ke6 Kf6+ 6.Kf7 Kg7 7.Kg8 Kh8 8.Kg7 Rh6+
 9.Kg8 Qg5#

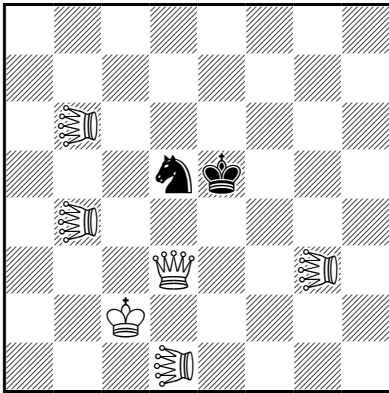
1.Kb7 Rb1+ 2.Kc7 Rb8+ 3.Kd6 Qe5+ 4.Ke6
 Qf5 5.Kd6 Kb7 6.Kc6+ Ka8 7.Kc7 Rd8 8.Kb7
 Rc8+ 9.Ka7 Qd7#

1.Kb5 Qa6+ 2.Kc5 Kd5 3.Kd4 Ke4 4.Ke3 Kf3
 5.Kf2 Re1+ 6.Kg3 Kg2 7.Kh2 Kh1 8.Kg2 Rf1+
 9.Kh2 Qe2#

triple echo



3 - Václav KOTĚŠOVEC
FB1363 StrateGems 66/2014



ss#12 (6+2) C+

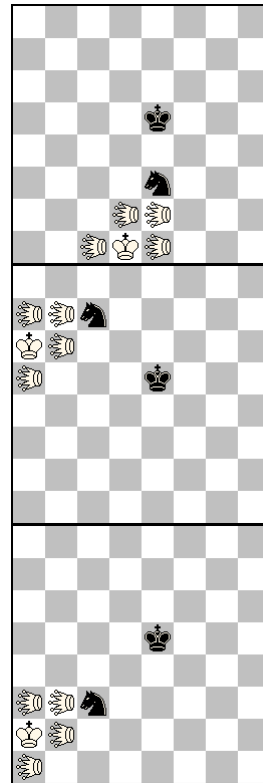
3.1.1...
 maximummer
 ♁ = Kangaroo

1.KAd6 2.KAc7 3.KAd2 4.Qc4 5.KAc1 6.Qb3
 7.KAb2 8.KAb1 9.KAe2 10.Kd1 11.KAe1
 12.Qe3+ S:e3#

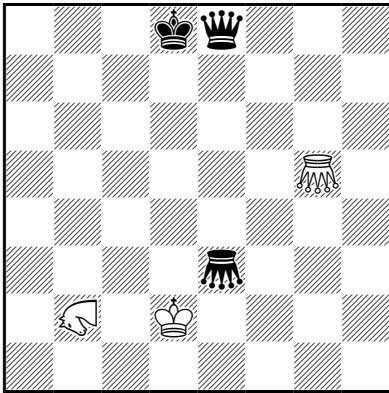
1.Kb3 2.KAa3 3.Qc2 4.KAa4 5.Kc4 6.Kb5
 7.KAb7 8.Ka6 9.KAa7 10.KAa8 11.KAa5
 12.Qc7+ S:c7#

1.Qb5 2.KAb3 3.KAa4 4.Kb2 5.KAb1 6.Ka2
 7.KAb6 8.KAb2 9.Qd3 10.KAa3 11.KAa1
 12.Qc3+ S:c3#

triple echo



4 - Václav KOTĚŠOVEC
690 Julia's Fairies 2015



sd-auto=24 (3+3) C+

2.1.1...

PlatzWechselCirce

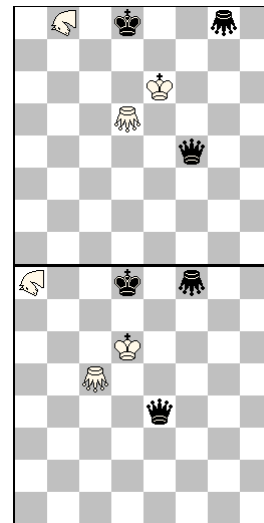
♞=Zebra

♛♞=Grasshopper

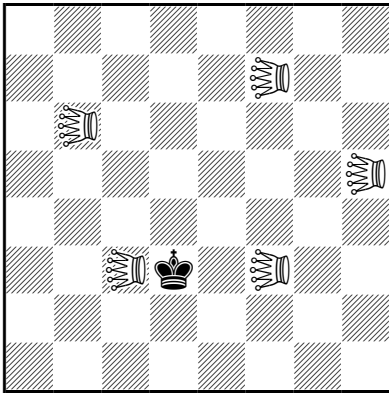
1.Ze4 2.Zh6 3.Z:e8(Qh6) 4.K:e3(Gd2)
 5.G:d2(Gg5) 6.Z:g5(Ge8) 7.Gf4 8.Kd4 9.Kc5
 10.G:h6(Qf4) 11.Zd3 12.Zf6 13.Ge6 14.Zc4
 15.Ze7 16.G:e8(Ge6) 17.Zh5 18.Zf8 19.Gg8
 20.Zd5 21.Zb8 22.Kd5 23.K:e6(Gd5)
 24.G:d5(Gg8) auto=

1.Kd3 2.Gd2 3.Ga2 4.Zd5 5.Za7 6.Ga8 7.Zc4
 8.Ze7 9.Ke4 10.K:e3(Ge4) 11.Kd4 12.Kd5
 13.G:e4(Ga8) 14.Kc5 15.G:e8(Qe4) 16.Zg4
 17.Zd6 18.Zg8 19.Gh8 20.Gf8 21.Zd6
 22.Z:a8(Gd6) 23.K:d6(Gc5) 24.G:c5(Gf8)
 auto=

echo chameleon



5 - Václav KOTĚŠOVEC
F3214 The Problemist 5/2015



h#5 (5+1) C+

4.1.1...

(no white king)

♔=Double-Grasshopper

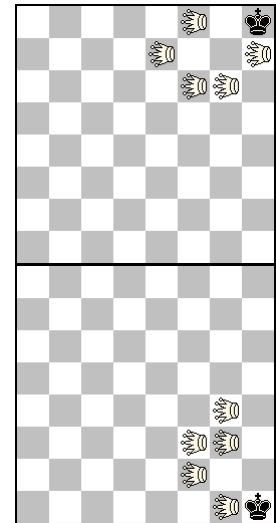
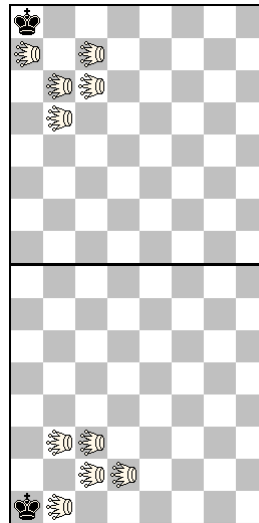
1.Kc4 DGb5 2.Kc5 DGa6 3.Kc6 DGa7 4.Kb7
 DGfc6 5.Ka8 DG6c7#

1.Ke2 DGd2 2.Kd1 DGc2+ 3.Kc1 DGd1+
 4.Kb2 DGbb3+ 5.Ka1 DGdb1#

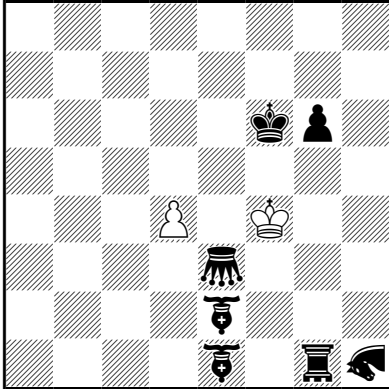
1.Ke4 DGg6 2.Kf5 DGf8 3.Kf6 DGe7 4.Kg7
 DGb6+ 5.Kh8 DGh7#

1.Ke3 DGfd4 2.Kf2 DGg4 3.Kg2 DGe1 4.Kh2
 DGBg3 5.Kh1 DGf2#

four corners (4-fold echo of 4 pieces)



6 - Václav KOTĚŠOVEC
T133 ChessProblems.ca 2013
1. Prize



sh#205 (2+7) C+

maximummer

♗ = Bishophopper

♖ = Rookhopper

♟ = Grasshopper

♞ = Antelope = [3,4]Leaper

- 1.RHg7 2.ANe5 3.ANa2 4.ANd6 5.ANg2
- 6.ANc5 7.ANf1 8.ANb4 9.BHa5 10.ANf1
- 11.ANc5 12.ANg2 13.ANd6 14.ANh3 15.ANe7
- 16.Ge8 17.ANa4 18.Ge1 19.ANd8 20.ANg4
- 21.ANc7 22.RHb7 23.ANg4 24.ANc1 25.ANf5
- 26.ANb8 27.ANe4 28.ANa7 29.ANd3 30.ANg7
- 31.RHh7 32.ANc4 33.ANf8 34.ANb5 35.BHa6
- 36.ANf2 37.ANc6 38.ANg3 39.ANd7 40.RHc7
- 41.ANa3 42.ANe6 43.Ge7 44.ANa3 45.ANd7
- 46.ANh4 47.ANe8 48.ANb4 49.Ga3 50.ANf7
- 51.ANc3 52.RHc2 53.ANf7 54.ANb4 55.ANe8
- 56.ANh4 57.ANd7 58.ANg3 59.Gh3 60.ANd7
- 61.Gc8 62.Gc1 63.Gg5 64.ANg3 65.ANc6
- 66.RHc7 67.ANg3 68.ANd7 69.ANh4 70.ANe8
- 71.ANb4 72.ANf1 73.ANc5 74.Gb5 75.ANf1
- 76.ANb4 77.ANe8 78.ANh4 79.ANd1 80.ANg5
- 81.Gh5 82.ANc2 83.RHc1 84.ANg5 85.ANd1
- 86.ANh4 87.ANd7 88.ANa3 89.ANe6 90.ANh2
- 91.ANd5 92.Gc5 93.ANg1 94.ANc4 95.ANf8
- 96.ANb5 97.ANe1 98.ANh5 99.ANd2
- 100.BHe1 101.ANh5 102.ANd8 103.ANg4
- 104.ANc7 105.ANf3 106.ANb6 107.ANe2
- 108.BHf1 109.ANh6 110.ANd3 111.ANg7
- 112.ANc4 113.BHb5 114.ANg1 115.ANd5
- 116.ANh2 117.ANe6 118.ANa3 119.ANd7
- 120.ANg3 121.ANc6 122.ANf2 123.RHc6
- 124.Ge3 125.Gg5 126.Ga5 127.BHg3 128.BHe5
- 129.BHd7 130.ANb5 131.ANe1 132.ANh5
- 133.ANd2 134.Ge1 135.ANh5 136.ANd8
- 137.ANg4 138.BHh3 139.ANc7 140.ANf3
- 141.ANb6 142.ANe2 143.ANa5 144.ANe8
- 145.ANb4 146.Ga5 147.ANe8 148.ANh4
- 149.ANd7 150.BHc8 151.ANa3 152.ANe6
- 153.ANb2 154.ANf5 155.BHg4 156.ANc1
- 157.Gf5 158.BHe6 159.ANg4 160.ANc7
- 161.ANf3 162.ANb6 163.ANe2 164.ANa5
- 165.ANd1 166.ANg5 167.ANc2 168.Gb1
- 169.RHc1 170.ANg5 171.Gh7 172.ANd1
- 173.ANh4 174.ANd7 175.ANg3 176.ANc6
- 177.RHc7 178.Gb7 179.ANf2 180.ANb5
- 181.ANf8 182.ANc4 183.ANg7 184.RHh7
- 185.ANd3 186.RHa7 187.ANh6 188.ANe2
- 189.ANb6 190.ANf3 191.Gg2 192.ANc7
- 193.ANg4 194.ANc1 195.ANf5 196.ANb2
- 197.Ga2 198.Gf7 199.RHg7 200.ANf5
- 201.ANc1 202.ANg4 203.ANd8 204.ANa4
- 205.ANe7 d:e5#