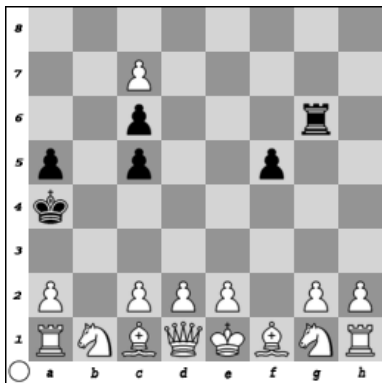


F. Selfmates

1. Alexey Gasparyan (Armenia)

“The Problemist”, May 2014 (S2498), correction



(15+6)

S#15

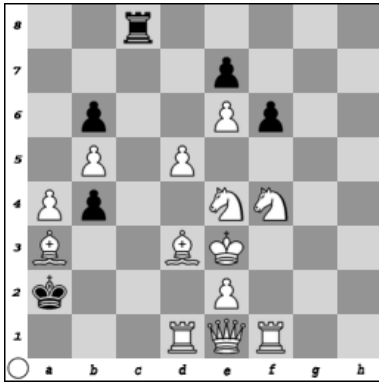
White: Ke1, Qd1, Ra1, Rh1, Bc1, Bf1, Sb1, Sg1, pp. a2, c2, c7, d2, e2, g2, h2 (15)

Black: Ka4, Rg6, pp. a5, c5, c6, f5 (6) S#15

1.c4 Kb4 2.a3 K*c4 3.e4 Kd4 4.Sf3 K*e4 5.Sc3 Kf4 6.d3 Kg4 7.Se5 Kh4 8.g3 R*g3 9.hg K*g3
10.Qg4! fg 11.c8Q c4 12.Q*c6 cd (a4) 13.Bd2 a4 (cd) 14.Qf3! gf 15.Rd1 f2X!

2. Alexey Gasparyan (Armenia)

“G.Bakcsi-80, D.Durham-80” JT, 2013-2014, spec.hon.men.



(13+6)

S#13

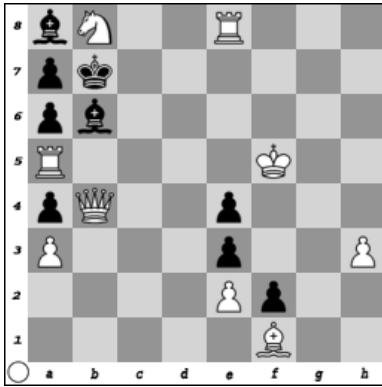
White: Ke3, Qe1, Rd1, Rf1, Ba3, Bd3, Se4, Sf4, pp. a4, b5, d5, e2, e6 (13)

Black: Ka2, Rc8, pp. b4, b6, e7, f6 (6) S#13

1.Ra1 Kb3 2.Qd1 Rc2 3.Bc1! f5 4.Sd2 Kc3 5.Sb1 Kb3 6.d6! ed 7.Kf2 d5 8.Ke1 d4 9.e3! de
10.Rh1 e2 11.S*e2 f4 12.Sg1! f3 13.Bf1! f2X.

3. Alexey Gasparyan (Armenia)

“The Problemist” 2014 5comm.



(9+9)

S#16

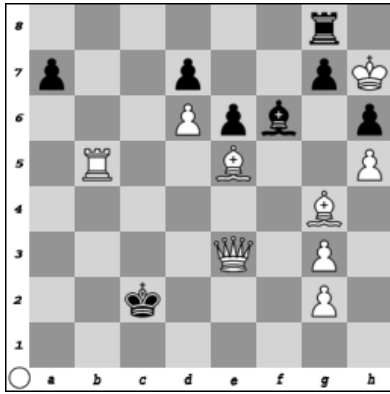
White: Kf5, Qb4, Ra5, Re8, Bf1, Sb8, pp. a3, e2, h3 (9)

Black: Kb7, Ba8, Bb6, pp. a4, a6, a7, e3, e4, f2 (9) S#16

1.Rd8! Kc7 2.Qd6 Kb7 3.Qe7 Bc7 4.Kg4 Kb6 5.Qc5 Kb7 6.Qb4 Bb6 7.Kg3 Kc7 8.Qd6 Kb7
9.Qe7 Bc7 10.Kg2 Kb6 11.Qc5 Kb7 12.Qb4 Bb6 13.Qe7 Bc7 14.Q*e4 Kb6 15.Sd7 K*a5 16.Qd5
B*d5X.

4. Alexey Gasparyan (Armenia)

“The Problemist”, November 2014 (S2522), correction



(9+8)

S#21

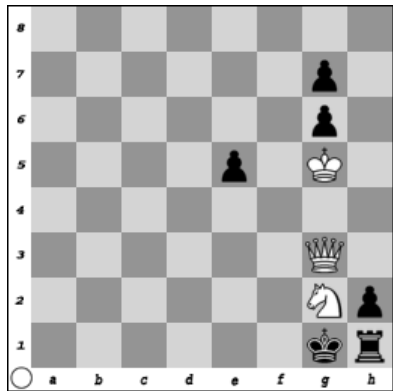
White: Kh7, Qe3, Rb5, Be5, Bg4, pp. d6, g2, g3, h5 (9)

Black: Kc2, Rg8, Bf6, pp. a7, d7, e6, g7, h6 (8) S#21

1.Rc5 Kb1 2.Qc1 Ka2 3.B*e6! De 4.Ra5 Kb3 5.Ra3 Kb4 6.Qc3 Kb5 7.Ra5 Kb6 8.Qc5 Kb7
 9.Ra7 Kb8 10.Qb6 Kc8 11.Qb7 Kd8 12.Qc7 Ke8 13.Qd7 Kf8 14.Ra8 Bd8 15.Kg6 Rh8 16.Qe7
 Kg8 17.g4 Rh7 18.Qf7 Kh8 19.g5 hg 20.h6 g4 21.g3 R*h6X.

5. Alexey Gasparyan (Armenia)

“StrateGems 68” (S0606)



(3+6) C+ S#8

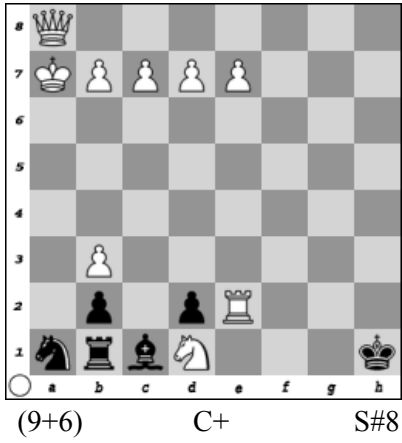
White: Kg5, Qg3, Sg2 (3)

Black: Kg1, Rh1, pp. e5, g6, g7, h2 (6) S#8

1.Qf3! e4 2.Qe2 e3 3.Kg4 g5 4.S*e3 g6 5.Kg3 g4 6.Sf1 g5 7.S*h2 R*h2 8.Qg2 R*g2X.

6. Alexey Gasparyan (Armenia)

“The Problemist”, November 2015 (S2570)



White: Ka7, Qa8, Re2, Sd1, pp. b3, b7, c7, d7, e7 (9)

Black: Kh1, Rb1, Bc1, Sa1, pp. b2, d2 (6) S#8

1.Qh8 Kg1 2.Qh2 Kf1 3.Qh1 K*e2 4.e8R! Kd3 5.d8R! Kc2 6.b8R! S*b3 7.c8R! Kc5 8.Ka8!!
Ra1X.