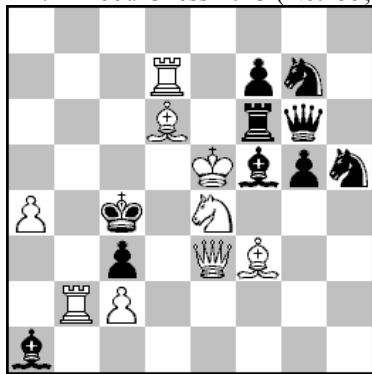


N0.1 Živko Janevski, [zivko@t.mk](mailto:zivko@t.mk)  
 1-2.Pr KobulChess 2013 (No.255; 05.10.2013)

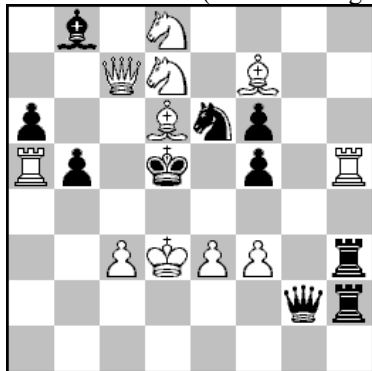


- 1.- Lb2: 2.Sd2+(A) cd2 3.Dd4+ Ld4:#
- 1.Tb~?[2.Sd2+(A) cd2 3.Dd4+ Ld4:#] Se6!
- 1.Tb6![2.Sd2+(A) cd2 3.Dd4+ Ld4:#]
- 1.- Td6: 2.Tc7+ Tc6 3.Sd6+ Dd6:#
- 1.- Le4: 2.Le2+ Ld3 3.De4+ De4:#
- 1.- Se6 2.Dd4+ Sd4: 3.Tc6+ Sc6:#

A diagonal/orthogonal setting on white square vacation by capture of the white piece with black extended Bristol line-clearance, black pin, delayed Umnov effects and pin-mates. White Correction and changed function of the white move, Sd2+.

N0.2 Živko Janevski, [zivko@t.mk](mailto:zivko@t.mk)

1-2.Pr Orbit 2013 (no.O Chatting...; Orbit no.59, September, 2013)



S#3

11+10

1.Ld~?(2.Tb5:+ ab5 3.Dc4+ bc4#) Lc7:!

1.Le7!(2.Tb5:+ ab5 3.Dc4+ bc4#)

1.- La7 2.De5+ fe5 3.e4+ fe4#

1.- Lc7: 2.Sf6:+ Ke5 3.f4+ Sf4:#

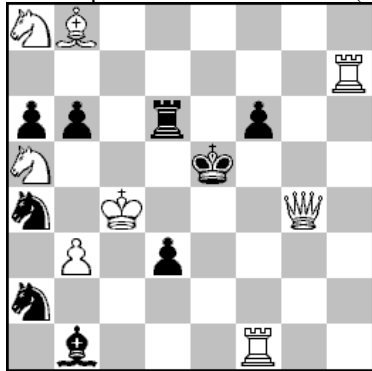
1.- Th4 2.e4+ Te4: 3.fe4+ De4:#

The Future selfmate. I - pair (threat and defence 1.- Th4): Consecutive sacrifices of two white pieces.

II - pair (defences: La7 & Lc7:) White half-pin and pin-mates by the black unpinned piece.



N0.4 Živko Janevski, [zivko@t.mk](mailto:zivko@t.mk)  
1.Pr. SuperProblem 75 TT 2013 (09.03.2013)



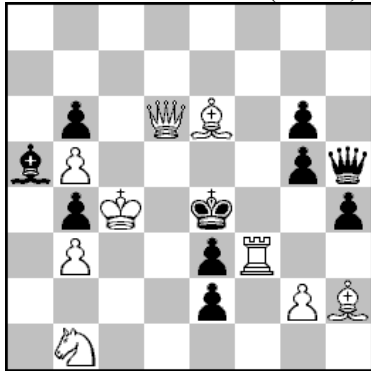
S#3

8+9

- 1.Dg6!(2.Df6:+ Ke4 3.Dd4+ Td4:#)
- 1.- f5(a) 2.Dd6:+ Ke4 3.Dd3:+ Ld3:#
- 1.- Ke6(b) 2.Sc7+ Ke5 3.Sc6+ Tc6:#
- 1.Df3?(2.Df6:+ Ke4 3.Dd4+ Td4:#) f5(a), Ke6(b)!
- 1.Dh4?(2.Df6:+ Ke4 3.Dd4+ Td4:#) f5!(a)
- 1.Dg3+? Ke6!(b)
- 1.- Ke4 2.Te7+ Te6 3.Dd3:+ Ld3:#

Harkow theme and flight-giving key.

N0.5 Živko Janevski, [zivko@t.mk](mailto:zivko@t.mk)  
Com. KoblChess 2013 (no.115; 22.01.2013)



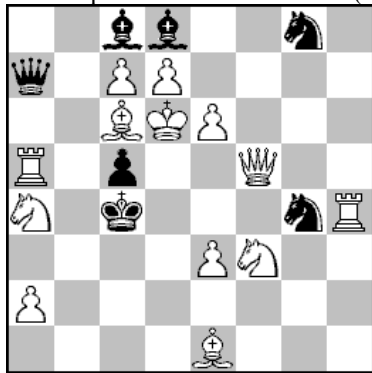
S#3

9+10

- 1.Le~?(2.Tf4+ gf4 3.Dd5+ Dd5:#) Dh7!
- 1.Lc8!(2.Tf4+ gf4 3.Dd5+ Dd5:#)
- 1.- Df3: 2.Sd2+ ed2 3.Dd3+ Dd3:#
- 1.- Dg4 2.Te3:+ Ke3: 3.Dd4+ Dd4:#
- 1.- Dh6 2.Lf5+ gf5 3.De6+ De6:#
- [1.- Dh7 2.Lb7+ Db7: 3.Dd5+ Dd5:#]

Task of 3x black anti-ambush ambush play, 4x black line vacation and 4x duel of white and black Queen in 3<sup>rd</sup> move!

N0.6 Živko Janevski, [zivko@t.mk](mailto:zivko@t.mk)  
2.Pr. SuperProblem 74 TT 2013 (08.03.2013)



- 1.Dg6?(2.Sb6+ Db6: 3.Tc5:+ Dc5:#) Da5:!  
1.Db1!(2.Sb6+ Db6: 3.Tc5:+ Dc5:#)  
1.- Da5: 2.Sd2+ Dd2:+ 3.Ld5+ Dd5:#  
1.- Ld7: 2.Lb5+ Lb5: 3.Sb6+ Db6:#  
1.- Db6 2.Sb2+ Db2: 3.Se5+ De5:#

Task of cyclic sacrifices of the white pieces (Sf3, Lc6 & Sa4) on 6 different squares in the thematic defences and mates by same black piece, Queen!