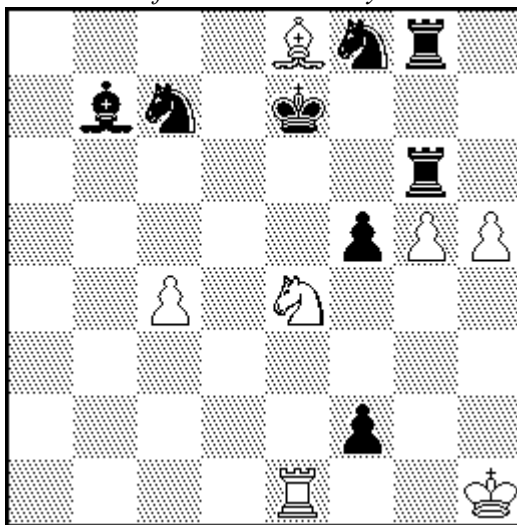


1. Zoran Gavrilovski

2nd Pr. *Orbit* 2014/I (issue 63, Sep. 2014)

Dedicated to Fadil Abdurahmanović

for his 75th birthday



H#2

4 solutions

7+8 (C+)

I. 1. Rd6 Kh2 2. Ke6 Sc5# **A**

II. 1. R6g7 Bc6 2. Kf7 Sd6# **B**

III. 1. Bc8 Sd6+ **B** 2. Kd8 Sf7#

IV. 1. Rc6 Sc5+ **A** 2. Kd6 S:b7#

1. **Abdurahmanović 1** theme (unpin of a white piece in 4 different ways):

- I) *direct self-unpin* by the white King at W1 move,
- II) *indirect self-unpin* by a white piece's arrival on the pin line at W1 move,
- III) *direct unpin* by a black pinning piece's move at B1 move,
- IV) *indirect unpin* by a black piece's arrival on the pin line at W2 move.

Judge B. Gadjanski: "this top composition ... refreshed the theme in an excellent way".

2. "Theme of the Future" helpmate with the following content:

Solutions I & II

- self-block by bRg6 at B1 move,
- unpin of wSe4 by a white piece at W1 move,
- bK's play at B2 move,
- battery mate by wSe4 at W2 move;

Solutions III & IV

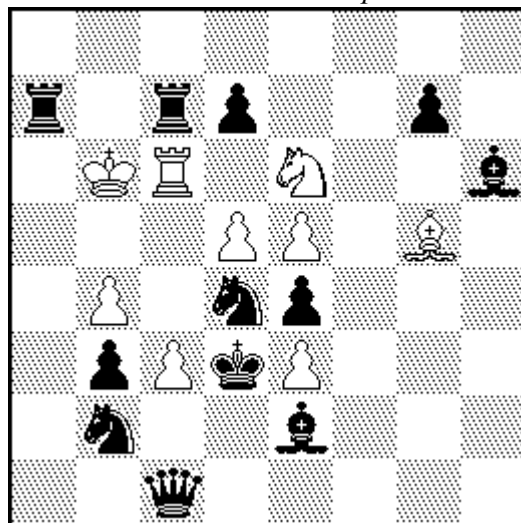
- unpin of wSe4 by a black piece at B1 move,
- battery check by wSe4 at W1 move,
- bK's play at B2 move,
- wS's play at W2 move.

3. **Link between the two pairs of solutions:**

- 4-fold unpin of Se4,
- 4-fold bK's play at B2 moves,
- 4-fold S's battery play,
- Sc5 & Sd6 (**A** & **B**) are mates in solutions I & II; and W1 moves in solutions IV & III (*changed functions of moves*).

E-mail of Zoran Gavrilovski: mprobl@yahoo.com

2. Zoran Gavrilovski
1st Pr. *FIDE World Cup 2015*



H#2.5 4 solutions 9+12 (C+)

- I. 1...Sc5+ **A** 2.K:c3 Be7! 3.Bd3 (Sd3?) S:e4#
 II. 1...Sf4+ **B** 2.K:e3 Rf6! 3.Sd3 (Bd3?) Sg2#
 III. 1...c:d4 2.Qd2 Rc1! 3.Rc5 S:c5# **A**
 IV. 1...e:d4 2.Qc2 Bc1! 3.Bf4 S:f4# **B**

1. “**Theme of the Future**” helpmate (a problem with *two pairs of thematically related solutions*) with the following content:

Solutions I & II

- prospective (direct) battery creation at W1 move,
- bK’s arrival on a battery line & square vacation at B2 move,
- indirect battery creation at W2 move,
- self-block with dual avoidance at B3 move,
- use of direct & indirect battery at W3 move;

Solutions III & IV

- white line opening at W1 move,
- self-block by bQ at B2 move,
- line-clearance with *Umnov* effect at W2 move,
- black sacrifice at B3 move,
- captures of a sacrificed piece by wS at W3 move.

2. **Link** between the two pairs of solutions:

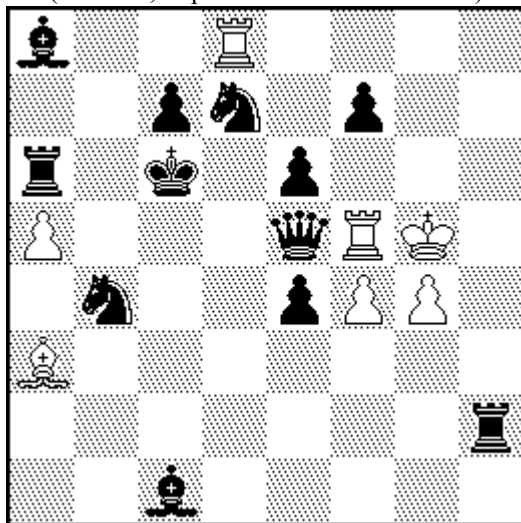
- arrivals on squares vacated by black pieces: monocolour (square vacation/arrival on d3) or mixed (*Umnov* effect on c1),
- full orthogonal-diagonal transformation of the play,
- Sc5 & Sf4 (**A** & **B**) are W1 moves in solutions I & II; and mates in solutions III & IV (changed functions of moves).

Judge A. Onkoud: “An original TF-Helpmate with ideas of exceptional quality. This is top class!”

E-mail of Zoran Gavrilovski: mprobl@yahoo.com

3. Zoran Gavrilovski

1st Pr. *The Macedonian Problemist* 2013
(issue 42, September–December 2013)



H#2 b) Ba8→c4, c) Pc7→c4 7+12 (C+)

a) 1.Kd6 R:e5 **A** 2.Bc6 B:b4# **B**

b) 1.Kd5 (Kc5?) B:b4 **B** 2.c6 R:d7# **C**

c) 1.Kc5 (Kd5?) R:d7 **C** 2.Rc6 R:e5# **A**

Judge Ž. Janevski: “A setting of difficult task of **cyclic interferences** [...], **pin mates**, **cyclic white moves** and **cyclic changed functions** of white [and] black pieces.”

V. Medintsev: “The combination of **cyclic function permutation** of black and white pieces with **triple interference** is NEW.”

1. cyclic themes

cycle of white moves in a three-fold chain:

- a) 1...R:e5 **A** ... 2...B:b4# **B**,
- b) 1...B:b4 **B** ... 2...R:d7# **C**,
- c) 1...R:d7 **C** ... 2...R:e5# **A**;

cycle of interferences between three black pieces:

- a) **bBa8** interferes with a **bPc7's** line by 2.Bc6, thus 3.c5??,
- b) **bPc7** interferes with a **bRa6's** line by 2.c6, thus 3.Rd6??,
- c) **bRa6** interferes with a **bBa8's** line by 2.Rc6, thus 3.Bd5??;

c) cyclic change of functions of two pairs of three pieces:

- of Rf5/Ba3/Rd8: **capturing 1st** (at W1 move) / **capturing 2nd** (at W2 move) / **pinning in the final position**,
- of Qe5/Sb4/Sd7: **captured 1st** (at W1 move) / **captured 2nd** (at W2 move) / **pinned in the final position**; and

2. strategic themes

vacation of a square (c6) by bK at B1 move and its **occupation** by a black piece's arrival at B2 move,

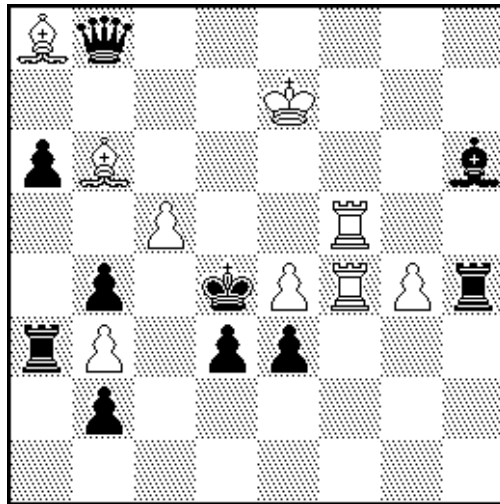
dual avoidance (allowed by harmonious twinning transfer to c4 of a piece which played at B2 move in the previous twin)

- in the b) twin: 1.Kc5? R:d7 2.(R)c6 R:e5+ 3.Bd5!
- in the c) twin: 1.Kd5? B:b4 2.Bc6 R:d7+ 3.B:d7!;

black self-pin by bK moves and **pin mates**.

4. Zoran Gavrilovski

2nd Pl. “The Macedonian Problemist“ League 2014
(Supplement to issue 45 of *The Macedonian Problemist*,
September – December 2014)



H#2 4 solutions 9+10 (C+)

I. 1.Q:b6 e5+ **A** 2.K:c5 e6#

II. 1.Q:f4 c6+ **B** 2.K:e4 c7#

III. 1.R:b3 Rg5 2.Rc3 e5# **A**

IV. 1. b1S Bb7 2.Sc3 c6# **B**

1. **Judge N. Stoley**: “A ‘Theme of the Future’ helpmate with **Zilahi**, self-block on c3 and other problem motifs. A notable achievement.”

Solutions I & II

- capture of a white rear piece at B1 move,
- pawn battery creation at W1 move,
- capture of a (former) battery’s front unit by bK at B2 move,
- battery firing at W2 move,
- Siers battery play,
- Zilahi exchange of a captured and mating piece;

Solutions III & IV

- a black unit’s arrival closer to bK at B1 move,
- interference of a black line by White at W1 move,
- self-block of c3 at B2 move,
- pawn-battery play at W2 move.

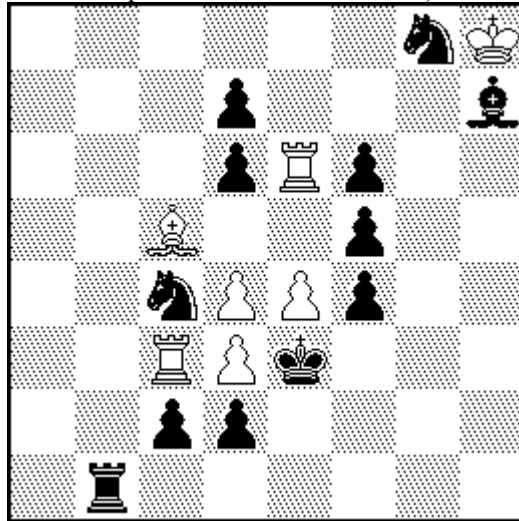
2. **Link between the two pairs of solutions**:

- interference of a line of a white piece (wRf5 or wBa8) by wP in solutions I or II; and of a line of a black piece (bBh6 or bQb8) by wRf5 or wBa8 in solutions III or IV,
- orthogonal-diagonal transformation of the play,
- e5 & c6 (**A** & **B**) are W1 moves in solutions I & II; and mates in solutions III & IV (changed functions of moves).

E-mail of Zoran Gavrilovski: mprobl@yahoo.com

5. Zoran Gavrilovski

2nd Pl. “The Macedonian Problemist“ League 2015
(supplement to issue 48 of *The Macedonian Problemist*,
September – December 2015)



H#2.5 3 solutions 7+12 (C+)

I. 1...Ra3! 2.Rb3 e:f5+ 2.K:d3 R:b3#

II. 1...Ba7! 2.Sb6 Rb3 2.K:d4 B:b6#

III. 1...Re8! 2.Se7 d:c4+ 2.K:e4 R:e7#

UNIQUE combination and FIRST presentation ever (according to the extensive search in “Winchole” and Janevski’s databases) in 3 solutions of the following content:

- 1. Maslar theme** (*a piece X plays across a critical square which is then occupied by a piece Y of the opposite colour; subsequently X captures Y on the critical square*), here achieved by three white line pieces which pass across b3, b6 or e7, respectively, and subsequently capture on one of these squares;
- 2. White battery destruction** by capturing each time the front battery unit (pawn) of the initial white batteries.

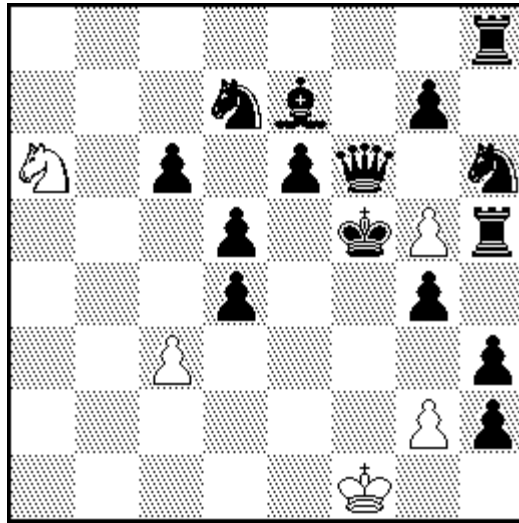
Judge C. Jones: “pleasing Maslar effects, well assembled.”

... Indeed, all white units except the wK are used in each solution: even the wPs either shield bK from a white line piece, play and/or guard a square (*Author*).

E-mail of Zoran Gavrilovski: mprobl@yahoo.com

6. Zoran Gavrilovski

14th–15th Pl. 9th WCCT 2012–13



H#3 b) Rh8→e3 5+15 (C+)
c) Sa6→a5

- a) 1.Qg6 (1.Q:g5? ... 2.K:g5??; 1.Qe5? ... 3...g3?) Sc5
2.K:g5 Se4+ 3.Kh4 g3#
- b) 1.Q:g5 (1.Qe5? ... 2.Ke5??; 1.Qg6? ... 3...Se8?) Sc7
2.Ke5 c:d4+ 3.Kd6 Se8#
- c) 1.Qe5 (1.Qg6? ... 2.Kg6??; 1.Q:g5? ... 3...g6??) S:c6
2.Kg6 S:e7+ 3.Kh7 g6#

ORIGINAL combination of

1. cyclic themes:

cycle of arrival squares for bQ and bK at B1 and B2 moves:

- a) 1.Qg6(**A**) ... 2.K:g5(**B**),
- b) 1.Q:g5(**B**) ... 2.Ke5(**C**),
- c) 1.Qe5(**C**) ... 2.Kg6(**A**);

cyclic trial avoidance at B1 move:

- a) 1.Qg6 (1.Q:g5?, 1.Qe5?),
- b) 1.Q:g5 (1.Qe5?, 1.Qg6?),
- c) 1.Qe5 (1.Qg6?, 1.Q:g5?); and

2. strategic and aesthetic motifs:

black battery destruction,
model mates.

Judging country Italy: “Among the problems showing cyclic dual avoidance, this one stands out for its originality [...]“.

E-mail of Zoran Gavrilovski: mprobl@yahoo.com