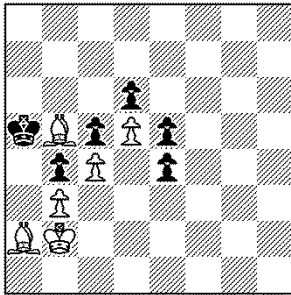


WCCI 2013–2015, group E

1) Henry Tanner

Tehtäväniekka 1/2015 (April 1, 2015)
dedicated to Leo Lahdenmäki 75 years



C+

h#7,5

6+6

W: Kb2 La2 Lb5 Bb3 c4 d5

B: Ka5 Bb4 c5 d6 e4 e5

Solution:

1...Ld7 2.e3 Lh3 3.e2 Lf1 4.exf1S Lb1

5.Sd2 Lf5 6.Sxb3 Lc8 7.Ka4 La6

8.Sa5 Lb5#

One of the white bishops leaves b5 to be sacrificed; later the other white bishop mates from b5. Thus the existence of two white-squared bishops in the diagram is thematic! (Not 1...Lb1 2.e3 Ld3 3.e2 Lf1??) The length is symbolical to the dedicatee, so are L + L.

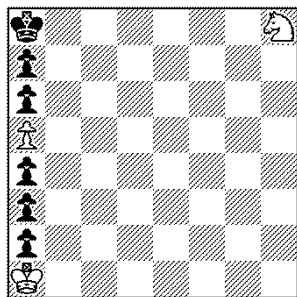
email: hentan@mbnet.fi

WCCI 2013–2015, group E

2) Henry Tanner

Tehtävänäiekka 2/2015 (June 8, 2015)

dedicated to Ilkka Sarén 75 years



C+

h#7,5

3+6

Switchback of the wS, dual avoidance by the wS (not 2...Se5?), tempo move by the wK, a not-so-common model mate. A unique diagram position!

NB. The black pawn on a7 is needed against a cook.

email: hentan@mbnet.fi

W: Ka1 Sh8 Ba5

B: Ka8 Ba2 a3 a4 a6 a7

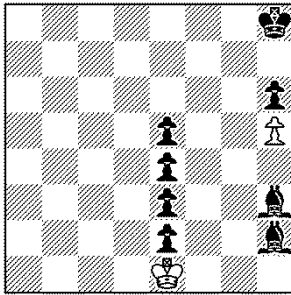
Solution:

1...Sf7! 2.Kb7 Sd6+ 3.Kc6 Sc4
4.Kb5 Sxa3+ 5.Kxa5 Kb2 6.a1T Kc2!
7.Tb1 Kc3 8.Tb5 Sc4#

WCCI 2013–2015, group E

3) Henry Tanner

3rd HM, Eero Saarenheimo 95 JT, 2014
Tehtäväniekka 4/2014 (October 28, 2014)



h#7

2+8

C+

W: Ke1 Bh5

B: Kh8 Lh2 Lh3 Be2 e3 e4 e5 h6

Solution:

1.Kh7 Kxe2 2.Lf1+ Kxe3 3.Lg1+ Kxe4
4.Ld3+ Kxe5 5.Ld4+ Ke6 6.Lh8 Kf7
7.Lg6+ hxg6#

Line-openings for the black bishops; ideal-mate. Black checks 5 times, out of 7 moves. White minimal. The theme of the JT was "pawn(s) on e-file".

NB. All the (thematic!) black pawns are captured to open lines for the bishops, but the pawns are also needed against cooks. It is interesting that the white-squared bishop has to make a round-trip, via f1 and d3, to reach g6, instead of the simple route f5 & g6.

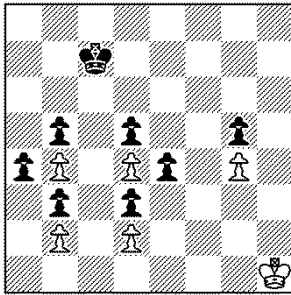
Judge: Marko Klasinc

email: hentan@mbnet.fi

WCCI 2013–2015, group E

4) Henry Tanner

4211, *Tehtävieniekka* 5–6/2014 (December 17, 2014)



C+

h#7

6+8

b) Kc7 → b6

Echo model mates, white excelsiors, active & passive sacrifices, and black & white promotions. A kindergarten problem. A small change prevents the first solution and allows the second one.

NB. This position and its mirror image are the *only* correct positions I know for this idea. *Any* change (that would keep both solutions) would lead to cooks or duals.

email: hentan@mbnet.fi

W: Kh1 Bb2 b4 d2 d4 g4

B: Kc7 Ba4 b3 b5 d3 d5 e4 g5

Solution:

a) 1.a3 bxa3 2.e3 a4 3.exd2 axb5
4.d1L b6+ 5.Kc6 b7 6.Lxg4 b8D
7.Ld7 b5#

b) 1.e3 dxe3 2.d2 e4 3.d1L exd5
4.Lxg4 d6 5.Lc8 d7 6.Kc6 d8D
7.Lb7 d5#

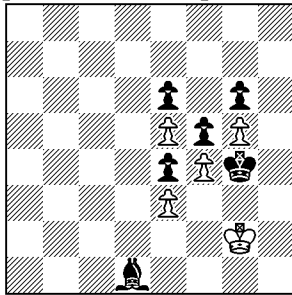
WCCI 2013–2015, group E

5) Henry Tanner

7055, *diagrammes* 179

“October 2011 – December 2012”

published in April (or March?) 2013



C+

h#11

5+6

W: Kg2 Be3 e5 f4 g5

B: Kg4 Ld1 Be4 e6 f5 g6

Solution:

1.Lc2! Kg1! 2.Kf3 Kf1 3.Kxe3 Ke1
4.Kd4 Kd2 5.e3+ Kxc2 6.e2 Kb3
7.e1L! Ka4 8.Lb4 Kb5 9.Ld6 exd6
10.Kd5 d7 11.Kd6 d8D#

Tempo moves, active bishop sacrifices,
Phoenix & Kniest on d6; model mate

email: hentan@mbnet.fi

WCCI 2013–2015, group E

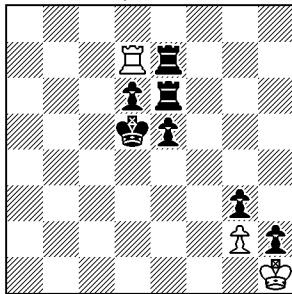
6) Henry Tanner

3987, *Tehtävänäiekka* 1/2013

(March 11, 2013)

dedicated to Satakunta Chess Problem

Club 50 years



C+

h#5

3+7

Three pairs of rook moves in which the white rook follows the direction of the black rook: right, down, left. Finally, the white rook goes up. The lengths of the rook journeys are the same: 10 squares!

email: hentan@mbnet.fi

W: Kh1 Td7 Bg2

B: Kd5 Te6 Te7 Bd6 e5 g3 h2

Solution:

1.Th7 Tg7 2.Th4 T_xg3 3.Td4 Tf3

4.e4 g4 5.Ke5 Tf5#