

WCCI 2013-15

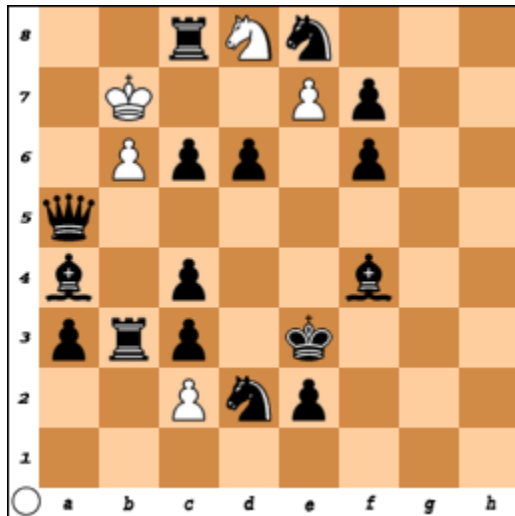
E HELPMATES ..... No 1

Ljubomir Ugren ( Slovenia )

[ljubougren@yahoo.com](mailto:ljubougren@yahoo.com)

The Problemist 05/2015

( Co, by Gustav 3.2 )



H # 3            b) wBd8            5 + 16

Solutions:

- a) 1.Sc7 **e8R+** 2.Kd4 Re5 3.**Rb5** Sxc6 #
- b) 1.Sg7 **e8B** 2.**Bb5** Bxc6 3.Qxb6+ Bxb6 #

Comment:

2 minor promotions of white in GRIMSHAW intersection of the black.

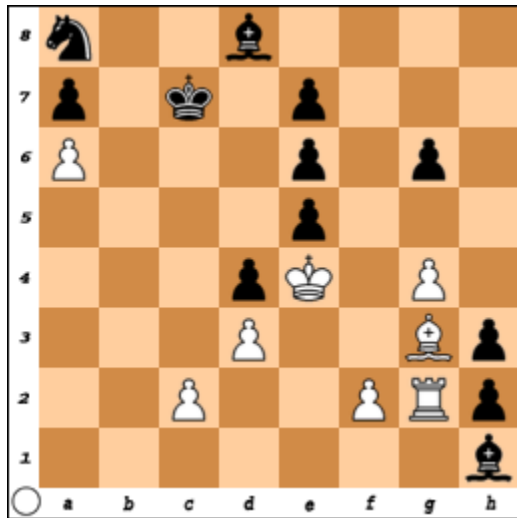
WCCI 2013-15

E HELPMATES ..... No 2

Ljubomir Ugren ( Slovenia )  
[ljubougren@yahoo.com](mailto:ljubougren@yahoo.com)

The Problemist 3/2015

( Co, by Gustav 3.2 )



H # 4

8 + 12

Solution

1.Bxg2+ Kxe5 2.Bb7 ab7 3.h1B b8R 4.Bc6 Kxe6 #

Comment

2 x Phenix of wR and bB in battery # with wK.

WCCI 2013-15

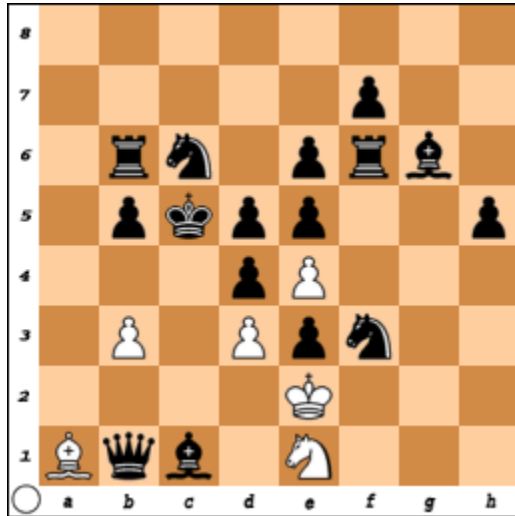
E HELPMATES ..... No 3

Ljubomir Ugren ( Slovenia )

[ljubougren@yahoo.com](mailto:ljubougren@yahoo.com)

The Problemist 11/2014

( Co, by Gustav 3.2 )



H # 3            2 Solutions            6 + 16

Solutions

A. 1.Rf5 Bxd4+ 2.ed4 e5 3.Qxd3 Sxd3 #

B. 1.Bf5 Bc3 2.dc3 b4+ 3.Kd4 Sxf3 #

Comment:

Theme GRIMSHAW on f5, 2 x active sacrifices of wB and reciprocal roles of wP e4 and b3.

## WCCI 2013-15

E HELPMATES ..... No 4

Ljubomir Ugren ( Slovenia )  
[ljubougren@yahoo.com](mailto:ljubougren@yahoo.com)

The Problemist 03/2015

( Co, by Gustav 3.2 )



H # 3            4 Solutions            8 + 16

Solutions

A 1.Qa3 Bxb4+ 2.Kxb4 Rb1+ 3.Kxa4 Bxc6 #

B 1.Kxd5 Kg3 2.Ke4 Bxc3 3.Ke3 Re1 #

C 1.Qxe1 Bxf7 2.Sxf7 Rxe1 3.Sd6 Rxe5 #

D 1.Rxh4 Rxh4 2.cd5 Rxd4 3.Kxd4 Bf2 #

Comment:

1. BK mate on 4 different fields
2. 2x sacrifice by 1 wB and reciprocal roles of wR and »remaining« wB in solution A and B.
3. 2x sacrifice of white pieces in solutions C and D.
4. Mutual (each other) capture of bQ and wB in solutions B and C.

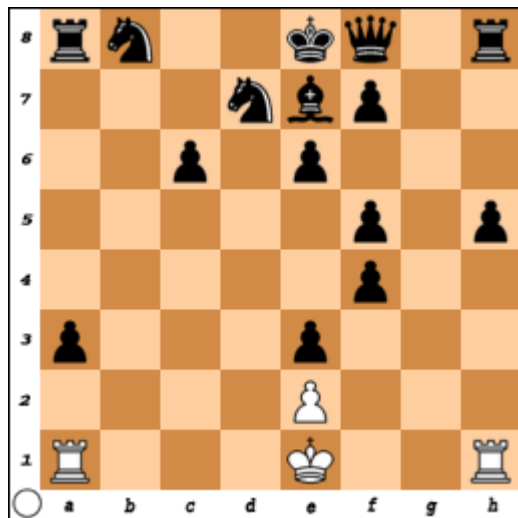
## WCCI 2013-15

E HELPMATES ..... No 5

Ljubomir Ugren ( Slovenia )  
[ljubougren@yahoo.com](mailto:ljubougren@yahoo.com)

9. WCCT

( Co, by Gustav 3.2 )



H # 3

4 + 15

a.) Diagram

b.) Ra1 → b1

a) 1.Bc5 0-0-0 2.Qd6 R×h5 3.0-0 Rg1.

b) 1.Sf6 0-0 2.Sbd7 Rfc1 3.0-0-0 R×c6.

Comment:

Theme Turton 2x (Be7 → c5, Qf8 → d6, Sd7 → f6, Sb8 → d7) and 4x Castling.

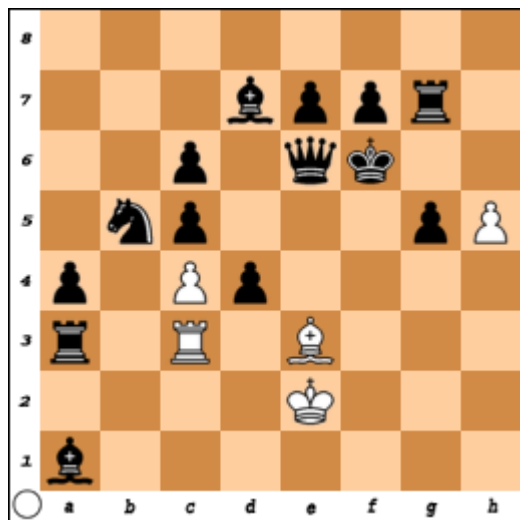
WCCI 2013-15

E HELPMATES ..... No 6

Ljubomir Ugren ( Slovenia )  
[ljubougren@yahoo.com](mailto:ljubougren@yahoo.com)

9. WCCT

( Co, by Gustav 3.2 )



H # 3      2 solutions      5 + 14

1.Qh3 c×b5 2.Be6 R×c5 3.Rc3 B×d4.

1.Qd6 Bf4 2.e6 Rf3 3.Bc3 B×d6.

Comment:

Pickabish on e6 and Grimshaw on c3.