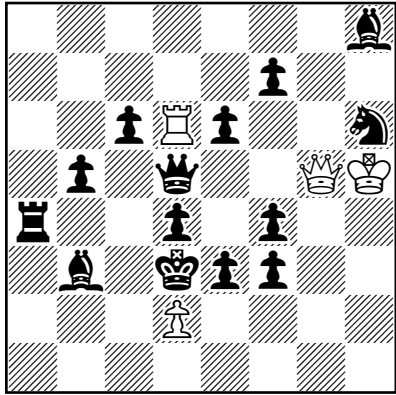


**No1**  
**Srecko Radovic, Serbia**  
*BIT 2015*  
 1st Prize



h#2

4+14

4 sol

1.Qd5~? Q\*b5+ 2.Ke4 d3#/Qe5 2.Kc4 R\*d4#

1.Q\*d6! Q\*b5+ 2.Ke4 d3#

1.Qe5! Q\*e5 2.Kc4 R\*d4#

1.Qe4! Qc5 2.e2 Qc3# (Ke4?)-useful 1...Q\*b5+  
 2.Ke4??-harmful

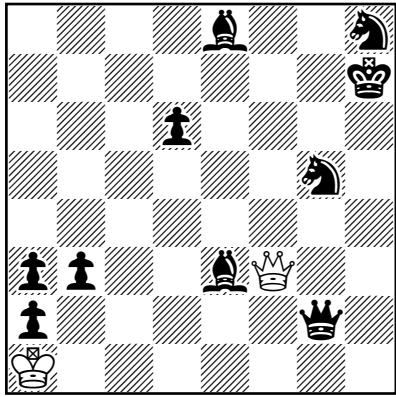
1.Qc4! Q\*f4 2.Bc2 Q\*e3# (Kc4?)-useful 1...Qe5  
 2.Kc4??-harmful

Doubleing the theme for BIT 2015, two separate Fleck  
 and two Kalsterm efekts in four queen duels

No2

Srecko Radovic, Serbia

"Kobulchess", 2015-03-25



h#5.5

2+10

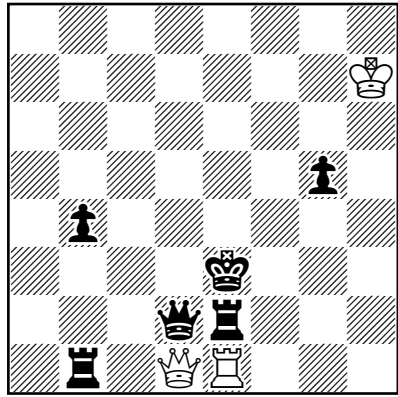
1...Qa8! 2.Qd5 Qxa3 3.Qg8 Kb2  
4.a1R Qa8! 5.Ra7 Qxe8 6.Rg7 Qh5#

Doubled bicolor Bristol in a helpmate white minimal!  
Switch-back of a white queen

No3

Srecko Radovic, Serbia

"Kobulchess", 2014-04-21



h#2

3+6

- a) diagram
- b) wSe1 & bSe2
- c)=b)+ wBe1 & bBe2
- d)=c)+wQ→wB & bQ→bB
- e)=d)+wSd1 & bSd2
- f)=e)+wRd1 & bRd2
- g)=f)+wR→wQ & bR→bQ=a)

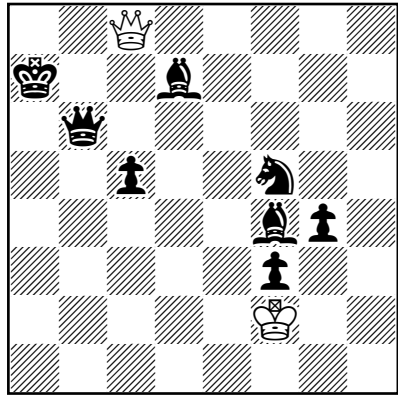
- a) 1.Qd4 Rf1 2.Rd2 Qf3#
- b) 1.Qc1 Qb3+ 2.Kd2 Sf3#
- c) 1.Qd5 Bc3 2.Qf3 Qd4#
- d) 1.Kf4 Qh1 2.Qe5 Qf3#
- e) 1.Kf4 Kg6 2.Qg4 Qe3#
- f) 1.Rd4 Rd2 2.Rf4 Qxe2#

Cyclic form in dubbed (white black) Forsberg twins

No4

Srecko Radovic, Serbia

"Kobulchess", 2014-10-17



3 sol

1.Qb6-b4 Qc8-a8 + 2.Ka7-b6 Qa8\*f3 3.Kb6-b5 Kf2-e2

4.Kb5-c4 Qf3-d3 #

1.Bf4-d6 Qc8-g8 2.Ka7-b7 Qg8\*g4 3.Kb7-c6 Kf2\*f3

4.Kc6-d5 Qg4-e4 #

1.Bd7-b5 Qc8\*f5 2.Bf4-c7 Kf2-e3 3.Ka7-b7 Ke3-e4

4.Kb7-c6 Qf5-d5 #

Distant selfblocks and three different mates by the wQ  
in Meredith and white minimal longmover helpmate

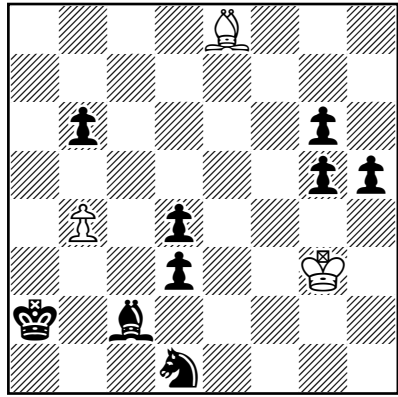
h#4

2+8

No5

Srecko Radovic, Serbia

"Kobulchess", 2014-07-05



h#6

3+9

1.Ba4 Bc6!! 2.Bxc6 b5 3.Kb3 bxc6 4.Kc4 c7 5.Kd5  
c8Q 6.Ke4 Qe6#

1...Bd7? ...6...Qe6?? Holtz-Hauzen

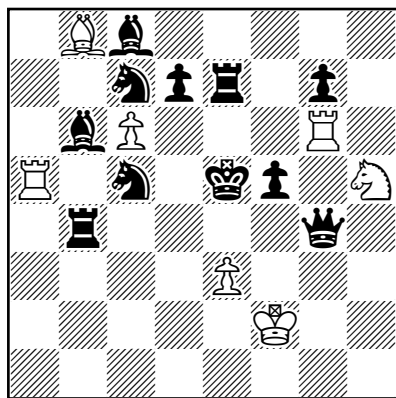
1...Bg6? ... 6.Ke4?? Harmful control e4 square

Active sacrifice of the wB to loss a tempo! Tries with  
thematic white peace. Model mate, Meredith.

No6

Srečko Radovic, Serbia

"Kobulchess", 2015-06-04



h#2

7+11

3 sol

1.d7\*c6 Sh5-f4 2.Re7-d7 Rg6-e6 #

1.d7-d5 Sh5-f6 2.Sc5-e6 Ra5\*d5 #

1.d7-d6 Sh5-g3 2.Sc7-d5 Bb8\*d6 #

Black correction, unpin effects (positive and negative)  
and pinmates!