

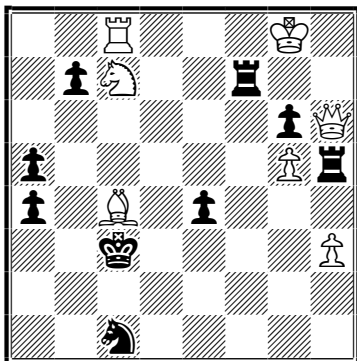
WCCI 2013-2015

Problems are located as increase in pieces and moves

/Задачи расположены в порядке увеличения фигур и ходов/

№1. Boris SHOROKHOV

H1294 Probleemblad, 2015



h#2 7+9

4.1.1.1.

1. ♖b4(a) ♜b5(A) 2. ♜f8+(♜~?) ♚:f8#

1. ♖d4(b) ♜d5(B) 2. ♜g7+(♜~?) ♚:g7#

1. ♜:h3 ♚:h3+ 2. ♖b4(a) ♜d5(B)#

1. ♜:g5 ♚:g5 2. ♖d4(b) ♜b5(A)#

HOTF

Hideaway

bbs64@mail.ru

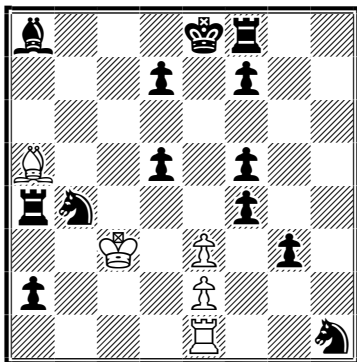
WCCI 2013-2015

Problems are located as increase in pieces and moves

/Задачи расположены в порядке увеличения фигур и ходов/

№2. Boris SHOROKHOV

E182 SuperProblem, 2015



h#2 5+13

4.1.1.1.

1. ♖d3 e:d3(A) 2. ♜d4 e:d4(B) #

1. d4+ e:d4(B) 2. ♙f3 e:f3(C) #

1. f3 e:f3(C) 2. f4 e:f4(D) #

1. ♖f2 e:f4(D) 2. ♖fd3 e:d3(A) #

Play by a pawns half-battery

Cycle of white moves

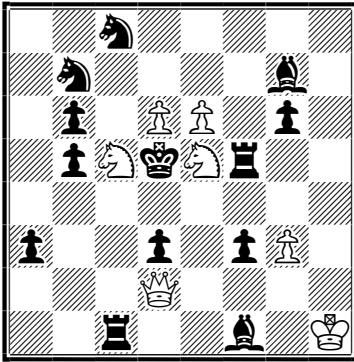
bbs64@mail.ru

WCCI 2013-2015

Problems are located as increase in pieces and moves
/Задачи расположены в порядке увеличения фигур и ходов/

№3. Boris SHOROKHOV

E39 Shakhmatnaya Kompozitsiya, 2015



h#2 7+13

6.1.1.1.

1. ♖:c5 ♘:d3 2. ♚c6 ♘b4#

1. ♘:e5 ♘:d3 2. ♚e4 ♘f2#

1. ♚:c5 ♚c2+ 2. ♚b4 ♘c6#

1. ♘:e5 ♚e3+ 2. ♚f6 ♘d7#

1. ♚:d6 ♚:d3+ 2. ♚c7 ♘a6#

1. ♘d4 ♚b2+ 2. ♚e3 ♘g4#

HOTF

Zilahi 2x2

King-cross

bbs64@mail.ru

WCCI 2013-2015

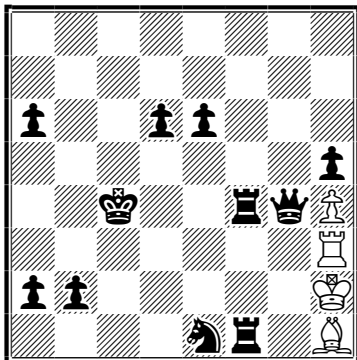
Problems are located as increase in pieces and moves

/Задачи расположены в порядке увеличения фигур и ходов/

№4. Boris SHOROKHOV

M.Vukcevic-75JT (StrateGems), 2013

1 Prize



h#3.5 4+11

2.1...

1... ♖f3 2. ♔b3 ♜g3! 3. ♜b4 ♜h3! 4. ♔c4 ♖d1#

1... ♜f3 2. ♔d5 ♖g2! 3. ♜c4 ♖h1! 4. ♔d4 ♜f5#

Grimshaw

Bristol

Tempo 2x2

bbs64@mail.ru

WCCI 2013-2015

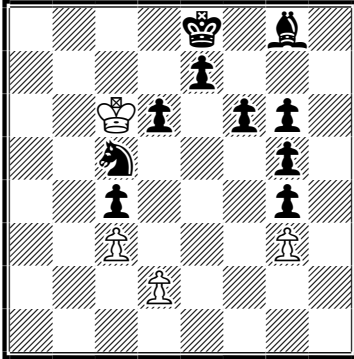
Problems are located as increase in pieces and moves

/Задачи расположены в порядке увеличения фигур и ходов/

№5. Boris SHOROKHOV

M.Lermontov-200JT (Shakhmatnaya Kompozitsiya), 2015

1-2 Prize



h#4 4+10

a)

1. ♖f7 ♖d5 2. ♘d7 ♖e4 3. ♖e6 d4 4. ♘f7 d5#

b)after 4th black move

1. ♘c5+ d:c5 2. ♖d7 c6+ 3. ♖d8! c7+ 4. ♖e8 c8=♚#

Tempo play

Excelsior

Black return

Rundlauf

bbs64@mail.ru

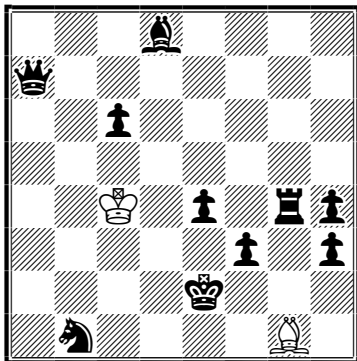
WCCI 2013-2015

Problems are located as increase in pieces and moves
/Задачи расположены в порядке увеличения фигур и ходов/

№6. Boris SHOROKHOV

Pobeda-70JT (Shakhmatnaya Kompozitsiya), 2015

4 Prize



h#4.5 2+10

2.1...

1... ♖b6 2. ♖g5 ♙c5 3. ♙e3 ♙d6+ 4. ♙f4 ♖c7 5. ♙e3
♙e6#

1... ♖c5 2. ♖g2 ♙d4 3. ♙f2 ♙e5+ 4. ♙g3 ♖d6 5. ♙f2
♙f5#

Indian & peri-Indian (x2)

bbs64@mail.ru