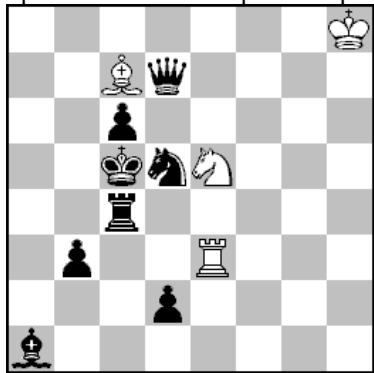


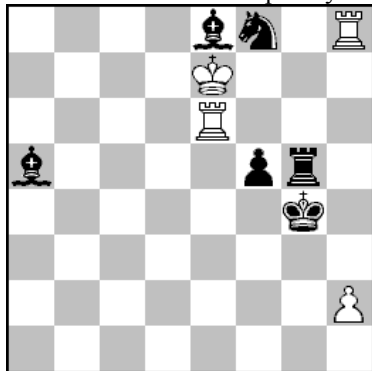
No.1 Živko Janevski, zivko@t.mk
Sp.Pr FIDE World Cup in Composing 2013



1.Kd4 Sg4 (Sc4:?) 2.c5 Le5#
1.Sc3 Sf3 (Sc6:?) 2.Kd5 Te5#
1.b2 Lb6+ 2.Kd6 Sc4# (Sf7?)
1.d1T Tb3: 2.Tdd4 Sd7:# (Sd3#)
1.Tb4 Te4 2.Tb5 Te4#
1.Te4 Ld6+ 2.Kd4 Td3#
C+

The Future Helpmate with 3 pairs of thematically connected solutions.

No.2 Živko Janevski, zivko@t.mk
 H3746 The Problemist, May, 2014
 Dedicated to Viktor Chepizhny 80 Jubilee birthday

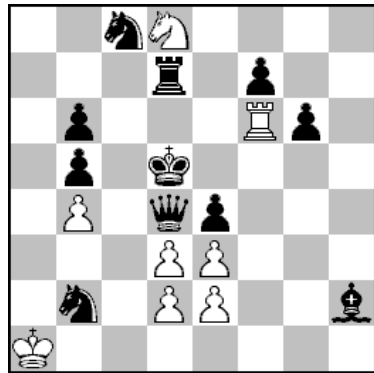


h#2 6.1.1.1. 4+6

- 1.Lc7 (Ld2?) Te3 2.Lf4 h3# (Tg3?)
- 1.Tg6 Te4+ 2.Kg5 h4#
- 1.Lc6 Teh6 2.Lf3 Th4#
- 1.f4 Kf6 2.f3 Te4#
- 1.Th5 Tg6+ 2.Kh3 Th5:#
- 1.Sh7 h3+ 2.Kh5 Th7:#
- C+

The Future Helpmate with 3 pairs of thematically connected solutions.

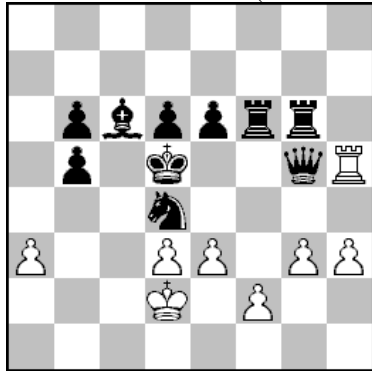
No.3 Živko Janevski, zivko@t.mk
1659 The Macedonian Problemist, October-December, 2014



- 1.Dc5 (D~) Te6 (Tb6:?) 2.Sc4 de4#
- 1.De5 (D~) Tb6: (Te6?) 2.Td6 Tb5:#
- 1.Db4:! de4+ (Te6?, Tb6:?) 2.Kc5 Tc6#
- 1.De3:! Tf5+ (Te6?, Tb6:?) 2.Kd4 Sc6#

Black Correction with two connected primary phases and two connected secondary phases.

No.4 Živko Janevski, zivko@t.mk
546 KoBulChess 2015 (03.03.2015)

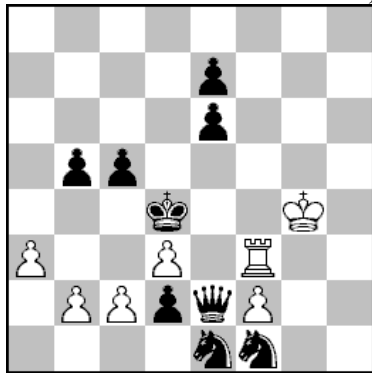


h#2 4.1.1.1. 8+10

- 1.Kc5 Kc3 2.Dd5 ed4#
- 1.Ke5 f4+(A) 2.Kf5 g4#
- 1.b4 ab4 2.De5 e4#(B)
- 1.Df5 e4+(B) 2.Ke5 f4#(A)

Task of fourfold prolonged self-pin of BQ on the same pin-line and four pin-mates with BK on different squares (c5, f5, d5, e5) and BD on different squares (d5, g5, e5, f5)! Triple unpin of WPe3 and changed functions of the white moves (f4 & e4).

No.5 Živko Janevski, zivko@t.mk
1721 The Macedonian Problemist, January-April, 2015

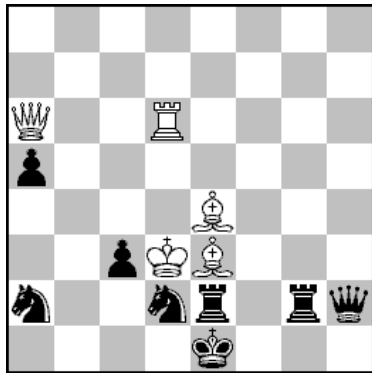


h#2 4.1.1.1. 7+9

- 1.De3 (D~?) Tf8 2.e5 Td8#
- 1.De5! Te3 (Tf8?) 2.Dd5 c3#
- 1.Df2:! Tf4+ (Tf8?) 2.Ke3 Te4#
- 1.Dd3:! Td3:+ (Tf8?) 2.Kc4 b3#

Black Correction with fourfold direct unpin of the WT and duel D/T in the 1st move.

No.6 Živko Janevski, zivko@t.mk
1.Pr H1788 StrateGems 2013



h#2 2.1.1.1. 5+8

1.Se4: Ke4: 2.Kf1 Td1#
1.Te3:+ Ke3: 2.Kd1 Df1#