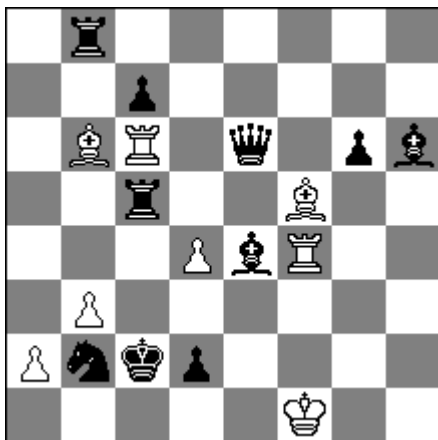


# No. 1

**Shaul Shamir**  
3<sup>rd</sup> Prize  
Z.Janevski 60 JT 2014



H#2      2.1.1.1      8+10

1.Kc3 Rxc7 2.Bb7 Ba5 #

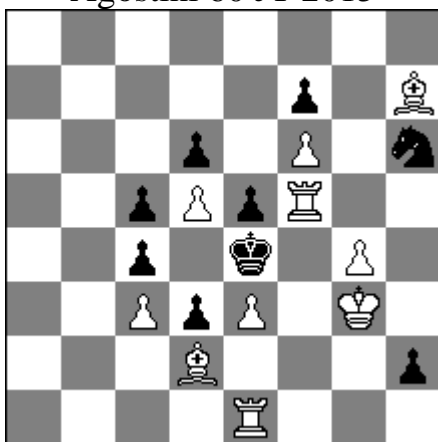
1.Kd3 Bxg6 2.Rg5 Rf3 #

Movement of Black & White along the pin-line  
Direct self-unpins  
Line opening – White for Black & Black for White  
Anticipatory self-interferences

[feigale1948@yahoo.com](mailto:feigale1948@yahoo.com)

No. 2

**Shaul Shamir**  
Honorable Mention  
Agostini 60 JT 2015



H#2.5      2.1...      10+9

1...Bg6 2.fxg6 g5 3.Kxf5 e4 #

1...Re2 2.dxe2 Be1 3.Kxe3 Rf3 #

Theme: Battery destruction

Zilahi

White sacrifices

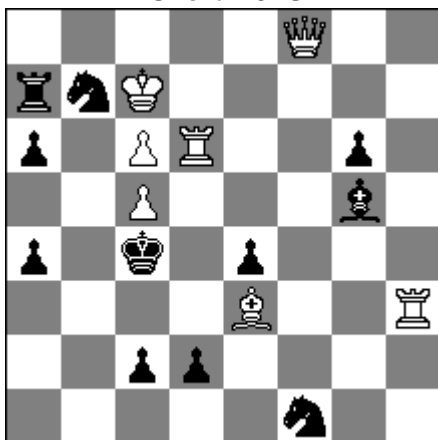
Capture of two thematic White pieces

[feigale1948@yahoo.com](mailto:feigale1948@yahoo.com)

No. 3

**Shaul Shamir**

Orbit 2013



H#2 b) wRh3→g3 7+11

a) 1.Sg3 Bd4 2.Kd3 Qf1 #

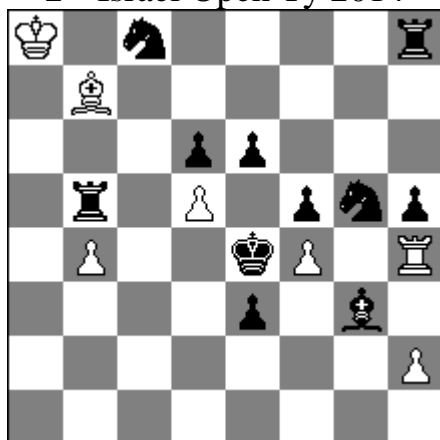
b) 1.Be7 Rd4 + 2.Kxc5 Rg5 #

Delayed Umnov  
White Grimshaw  
Pinning

[feigale1948@yahoo.com](mailto:feigale1948@yahoo.com)

## No. 4

**Shaul Shamir**  
4th HM  
2<sup>nd</sup> Israel Open Ty 2014



H#3      2.1.1.1      7+11

1.Bxf4 Rh3 (Rhx5?) 2.Be5 dxe6 +  
3.Kf4 Rh4 #

1.Rxd5 Ba6 (Bxc8?) 2.Re5 fxg5 +  
3.Kd5 Bb7 #

Theme: Mate by switchback of a white piece.

Pinning & Unpinning

Black Umnov

Dual avoidance

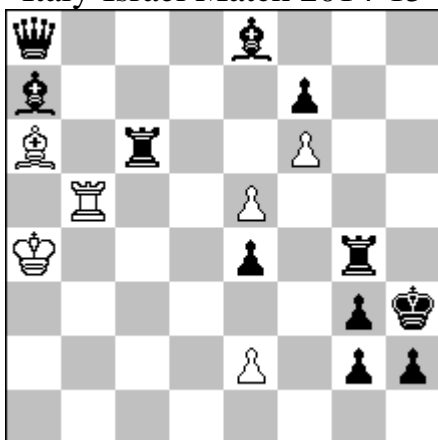
[feigale1948@yahoo.com](mailto:feigale1948@yahoo.com)

## No. 5

**Shaul Shamir**

6<sup>th</sup> Place

Italy-Israel Match 2014-15



H#2.5 b)Pg2→h4 6+11

a) 1...e6 2.Rxe6 Bc8 3.Rc6 Rh5#

b) 1...e3 2.Bxe3 Rb3 3.Ba7 Bf1#

Theme: In the diagram position, a black piece X stands on square A where it interferes with a black piece Y. In the course of the solution, X moves away from A and then returns to it. Y does not move. In the mate position, Y would prevent the mate were it not for its being interfered with by X. Square A is not adjacent to the BK in the mate position

Pinnings (black)

Pinnings/unpinnings (white)

White sacrifices

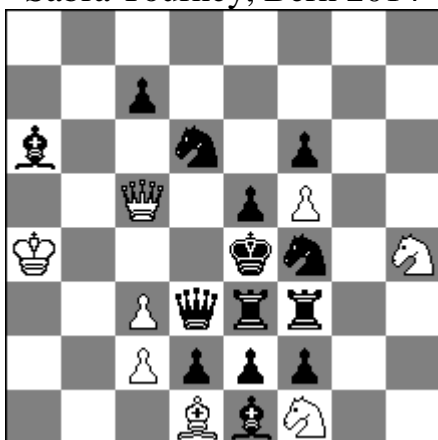
Opening/closing black/white lines

Masked lines

[feigale1948@yahoo.com](mailto:feigale1948@yahoo.com)

## No. 6

**Shaul Shamir**  
4<sup>th</sup> Prize  
Sabra Tourney, Bern 2014



H#2      2.1.1.1      8+14

1.exd1=B Sxf3 2.Bxf3 Sg3 #

1.exf1=S Qxe3 + 2.Sxe3 Bxf3 #

Theme:

A white piece making white's first moves is captured on black's second move.

Zilahi + Sacrifices

Black Pe2 captures white pieces and promotes to the same kind of piece that it captured.

White's first move gives Black king two flight squares

[feigale1948@yahoo.com](mailto:feigale1948@yahoo.com)