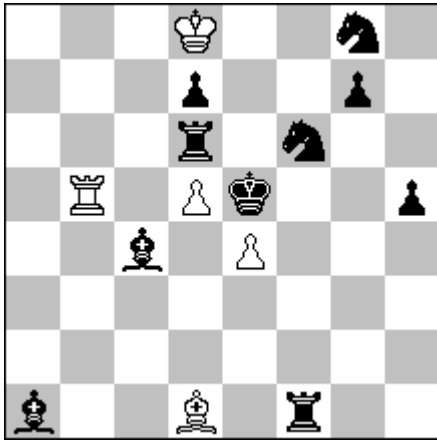


Semion Shifrin

# 1

"The Problemist"-1 , 2014 , #3716



Solution:

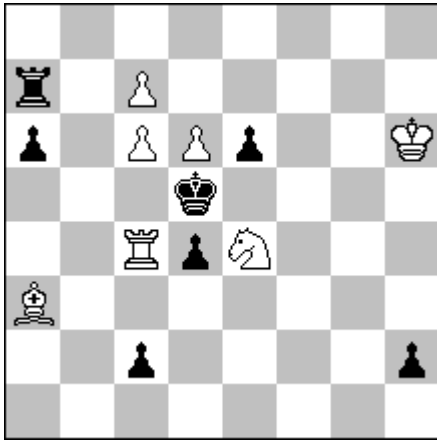
1. R:d5 Bg4 2. Kd6 B:d7 3. Rd4 e5 #

1. S:d5 B:h5 2. Kf6 Bf7 3. Sf4 Rf5 #

H#3 2 solutions (5+10) C+

e-mail: slsh@013.net.il

Semion Shifrin  
"Orbit"-62 , 2014 , #3807



H#2 (7+7) C+

b) Pe6 => e5

# 2

Solution:

a) 1. h1B c8S 2. B:e4 Rc5 #

b) 1. c1R c8Q 2. R:c4 Sf6 #

Zilahi , mixed AUW , self-blocks ,  
model mates .

e-mail: slsh@013.net.il

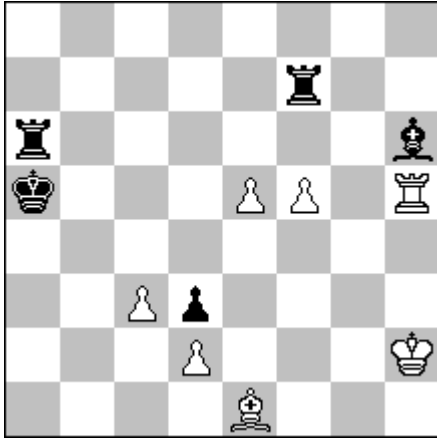
Semion Shifrin

Israel

MT "M.Lermontov-200", 2015

3<sup>rd</sup> Prize

# 3



H#3 b) Rh5 = Bh5 (7+5) C+

Solution:

a) 1. R:f5 Bf2 2. Rf4 Rf5 3. Ra4 e6 #

b) 1. B:d2 Bd1 2. Be3 Bd2 3. Bb6 c4 #

Address: Semion Shifrin

Pobox 5153

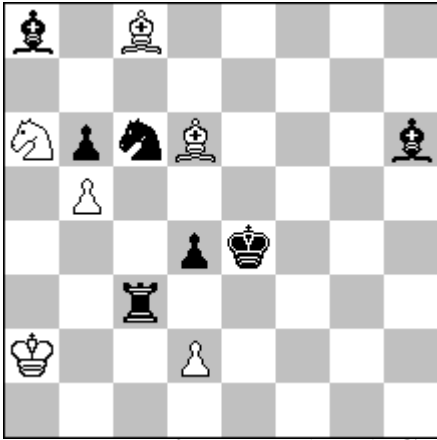
36853 , Nesher

Israel

Semion Shifrin

# 4

"The Problemist"-1 , 2015 , H3810



H#2 (6+7) C+

Solution:

- a) 1. Rf3 Sb4 2. Be3 d3 #
- b) 1. d3 Sd5 2. Sd4 Sc3 #
- c) 1. S:b5 Bb7+ 2. Kd4 S:b5 #
- d) 1. Bd2 Bc7 2. Bc3 B:b6 #
- e) 1. Rf3 Sg5 2. Rc5 Sf3 #

- b) In mating position a) Pd3 => b3
- c) In mating position b) Sc3 => a7
- d) In mating position c) Sb5 => f7
- e) In mating position d) Bb6 => h6

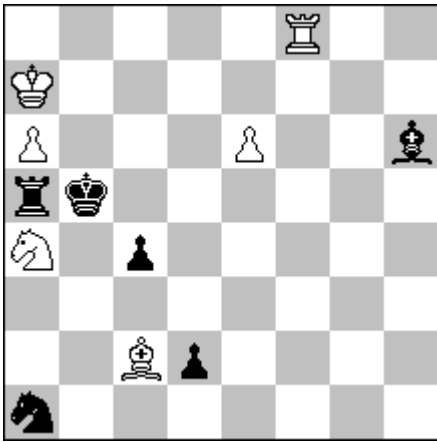
e-mail: slsh@013.net.il

Semion Shifrin

# 5

"Shakhmatnaya Kompozitsiya"-111 , 2013

#E6



Solution:

1. S:c2 Rc8 2. Sb4 Sc3 #
1. R:a4 Kb7 2. Rb4 Rf5 #
1. B:f8 Bg6 2. Bb4 Be8 #

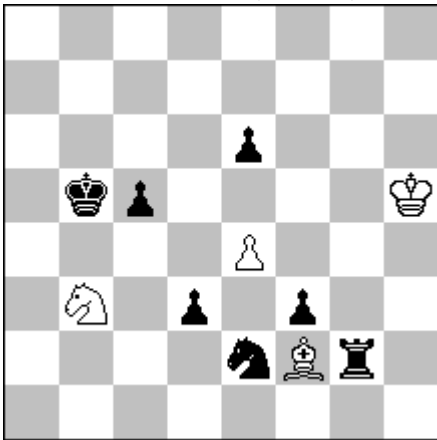
Meredith with cyclic Zilahi and changed self-blocks on b4 .

e-mail: slsh@013.net.il

Semion Shifrin

# 6

"The Problemist"-4 , 2014, #3687v



H#4 (4+8) C+  
b) – Se2

Solution:

- a) 1. Sd4 Be1 2. Rb2 Sa5 3. Rb3 Sb7 4. Kc4 Sd6 #
- b) 1. Kc4 Be3 2. Re2 Bc1 3. Re3 Sd2+ 4. Kd4 Bb2 #

e-mail: slsh@013.net.il