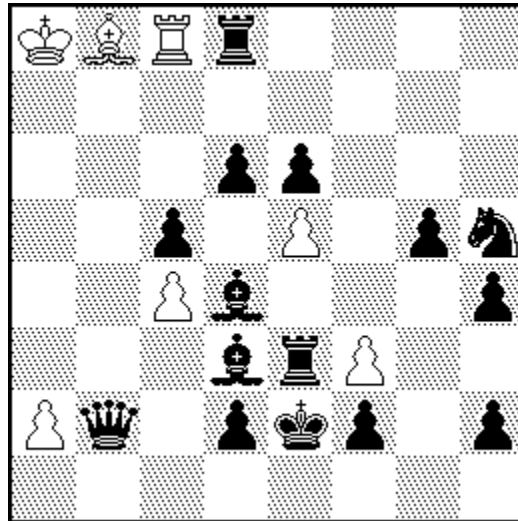


# 1. Zlatko Mihajloski

1. Pr. *The Macedonian Problemist* 2013



H#4

2 solutions

7+15

1.L:c4! T:c5! (L:d6?) 2.Kd3 Tc8! 3.Kc3 Lc7 4.Ld3 La5#

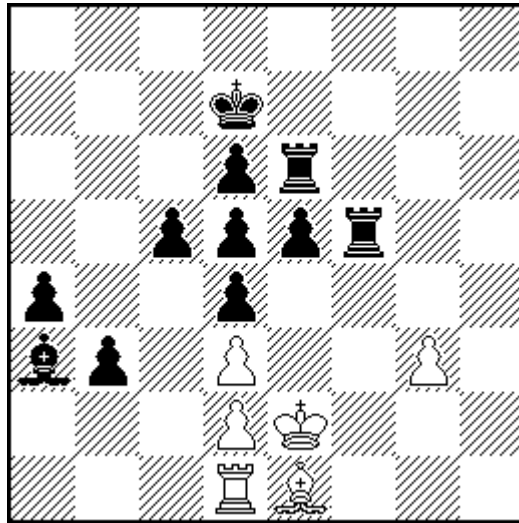
1.T:e5! L:d6! (T:c5?) 2.Ke3 Lb8! 3.Kf4 Tc7 4.Te3 Tf7#

Elimination of the Pc5 by the wT or the wL and their switchback to the diagram square, Grimshaw at c7 and Klasinc theme (switchback by the wL and the wT after letting the K to go through d3 or e3).

[zlmihajl@yahoo.com](mailto:zlmihajl@yahoo.com)

## 2. Zlatko Mihajloski

1. Pr. *Problemist Ukraini* – 10 JT 2014



H#4

2 solutions

6+11

1.Tef6! Lf2 2.Ke6 L:d4! 3.e:d4 Te1! 4.Ke5 Kd1#

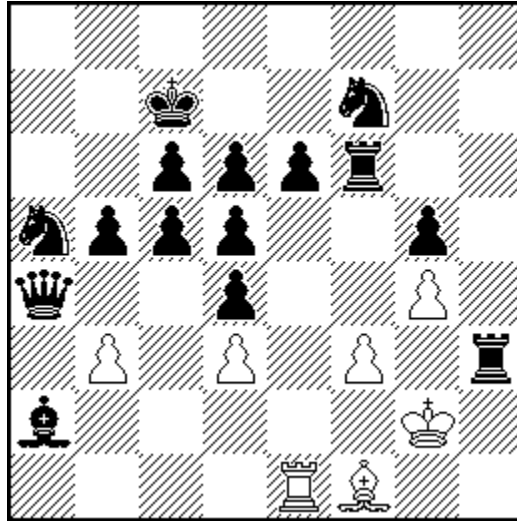
1.Kc6 Tc1 2.Kb5 Tc4! 3.d:c4 d:c4+ 4.Kb4 d3#

Zilahi and battery mates!

[zlmihajl@yahoo.com](mailto:zlmihajl@yahoo.com)

### 3. Zlatko Mihajloski

1. Pr. V. Varenikov – 90 MT 2014



H#4

2 solutions

7+15

1.L:b3 Te2 2.Lc4! d:c4 3.Kb6 c:b5 4.K:b5 Tb2#

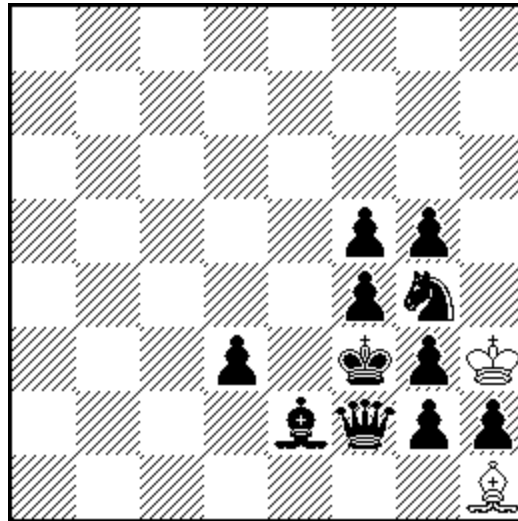
1.Th:f3 Le2 2.T3f5! g:f5 3.Kd7 f:e6+ 4.K:e6 Lg4#

Grimshaw on e2 and Kniest.

[zlmihajl@yahoo.com](mailto:zlmihajl@yahoo.com)

#### 4. Zlatko Mihajloski

Pr. e.a. A. Elerman - 120 MT 2014



H#6,5

2+11

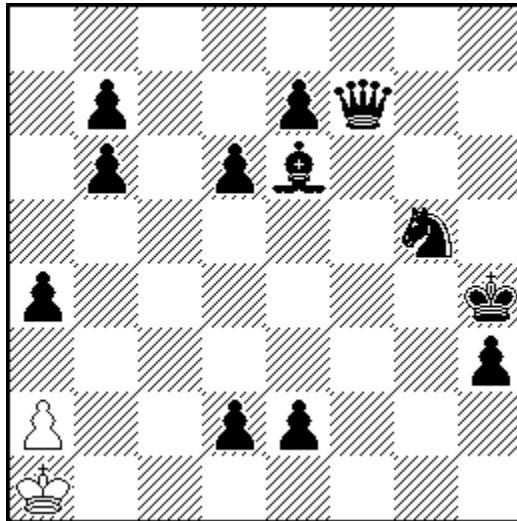
1...L:g2+ 2.Ke3 Lf3 3.Kd4! L:g4! 4.De3 Kg2  
5.Ke4 Lh3! 6.Lg4! Kf1 7.Kf3 Lg2#

Rundlauf (round-trip) by bK/wL, Klasinc  
wL/wK - bK/bL; Rehm theme wL/wK, a model  
mate and Umnov effects in a white minimal  
problem.

[zlmihajl@yahoo.com](mailto:zlmihajl@yahoo.com)

## 5. Zlatko Mihajloski

1. Pr. *D. Durham* - 80 JT 2013-2014



H#7

2+12

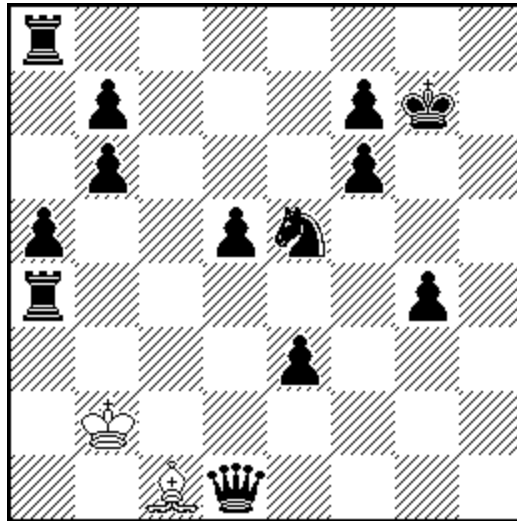
1.Lb3! a:b3 2.Dc4 b:c4 3.d1L! c5 4.e1D! c:d6  
5.De2 d:e7 6.Dh5 e8D! 7.Lg4 De1#

Double Bristol and Phoenix.

[zlmihajl@yahoo.com](mailto:zlmihajl@yahoo.com)

## 6. Zlatko Mihajloski

*The Problemist* 2015



H#6,5

2+13

1...Kc3! 2.Td4! (T~?) Lb2! (La3?) 3.Da1! K:d4  
4.f5 K:e5 5.Tg8! (Kf8?) Kd6+ 6.Kf8 La3! (Kd7?)  
7.Dg7 Kd7#

Play by the wK and wL on two diagonal lines,  
ending in a royal battery mate.

[zlmihajl@yahoo.com](mailto:zlmihajl@yahoo.com)