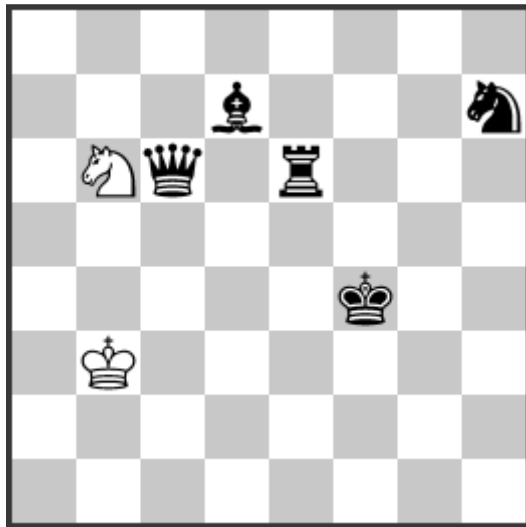


**Marcin Banaszek**

harmonie-aktiv, 7/2015 #2247

For the WCCI 2013-2015

H1



**H#5**      2.1.1.1.1...      (2+5) C+

White: Kb3, Sb6 (2)

Black: Kf4, Qc6, Re6, Bd7, Sh7 (5)

**Helpmate in 5 moves, 2 solutions:**

1. **Qf3+** Kc4 2. **Rg6** Kd4 3. **Bf5** Sd7 4. **Rg4** Sf6 5. **Sg5** Sh5#  
1. **Re4** Sc4 2. **Bf5** Kb4 3. **Qe6** Kc5 4. **Sf6** Sb2 5. **Ke5** Sd3#

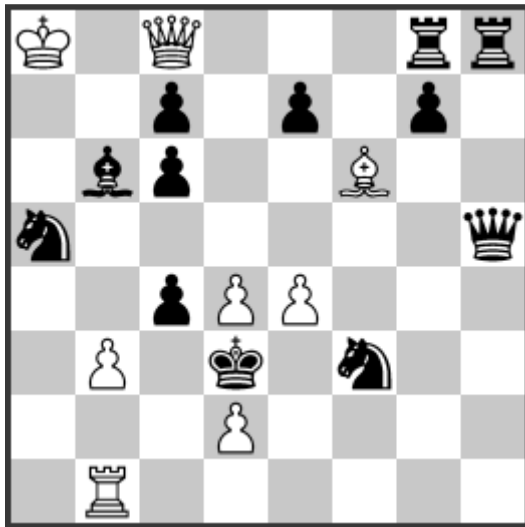
**In each solution 4 self-blocks** close to black „solo“ King, **ideal echo-mates**, minimal-problem, miniature.

Marcin Banaszek, Laura-Schradin-Weg 64, 72762 Reutlingen, Germany  
email: [marcin@m-banaszek.de](mailto:marcin@m-banaszek.de) 05.01.2016

**Marcin Banaszek**

Problem-Forum, 3/2013 #H666

For the WCCI 2013-2015 **H2**



**H#2,5 a) b) P**b3>b4** c) R**b1>f1** (4+3) C+**

White: Ka8, Qc8, Rb1, Bf6, P: b3, d2, d4, e4 (8)

Black: Kd3, Qh5, Rg8, Rh8, Bb6, Sa5, Sf3, P: c4, c6, c7, e7, g7 (12)

**Helpmate in 2,5 moves 0.1.1.1.1**

a) 1. ... **bxc4** 2. **Lc5 Rb8** 3. **Kxc4 Qa6#**

b) 1. ... **Re1** 2. **e5 Bd8** 3. **Kxd4 Qd7#**

c) 1. ... **Bxg7** 2. **Sg5 Rf8** 3. **Kxe4 Qf5#**

White line-opening and line-closing of black Queen by black units = **white/black bivalve** (3x), **self-unpin of white Queen** (3x), black King moves forward along the mate line with a capture of white Pawn (3x), the unpinned Queen checkmates (3x).

Marcin Banaszek, Laura-Schradin-Weg 64, 72762 Reutlingen, Germany

email: [marcin@m-banaszek.de](mailto:marcin@m-banaszek.de)

05.01.2016

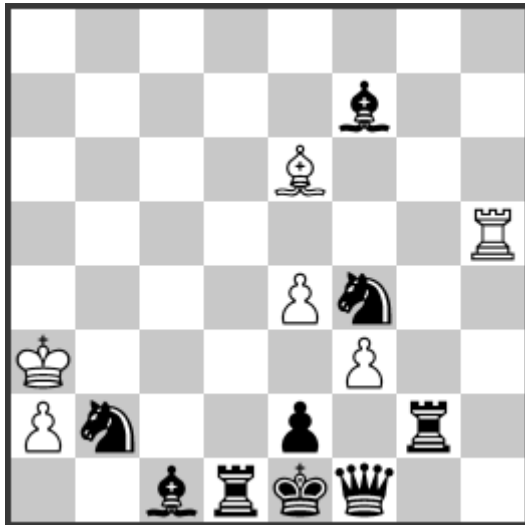
**Marcin Banaszek**

Polski Związek Szachowy, 7/2013 #34

8. Hon. Mention

For the WCCI 2013-2015

**H3**



**H#3 2.1.1.1.1.1 (6+9) C+**

White: Ka3, Rh5, Be6, P: a2, e4, f3 (6)

Black: Ke1, Qf1, Rd1, Rg2, Bc1, Bf7, Sb2, Sf4, Pe2 (9)

**Helpmate in 3 moves**

1. **Rf2 Rh2** (1. ... **Bh3?**) 2. **Qg2 Bh3** 3. **Kf1 Rh1#**  
1. **Rd2 Bc4** (1. ... **Rd5?**) 2. **Kd1 Rd5** 3. **Qe1 Bb3#**

**Black Umnov effects, white anticritical moves, dual avoidance, pin-mates, model mates.**

Marcin Banaszek, Laura-Schradin-Weg 64, 72762 Reutlingen, Germany  
email: [marcin@m-banaszek.de](mailto:marcin@m-banaszek.de) 05.01.2016

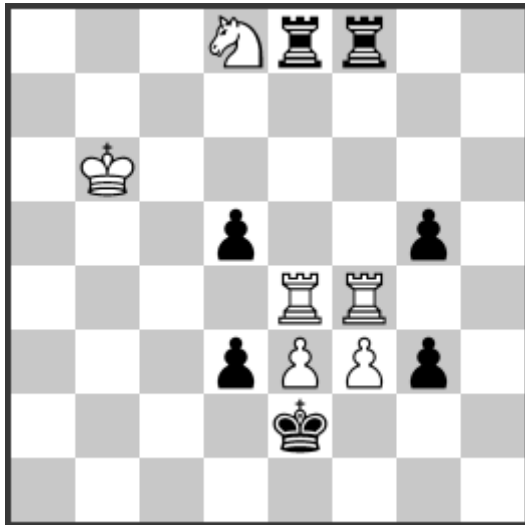
**Marcin Banaszek**

Die Schwalbe, 2/2013 #15465

1. Hon. Mention

For the WCCI 2013-2015

**H4**



**H#3 a) b) wSd8=wB (6+7) C+**

White: Kb6, Re4, Rf4, Sd8, P: e3, f3 (6)

Black: Ke2, Re8, Rf8, P: d3, d5, g3, g5 (7)

**Helpmate in 3 moves, 1.1.1.1.1**

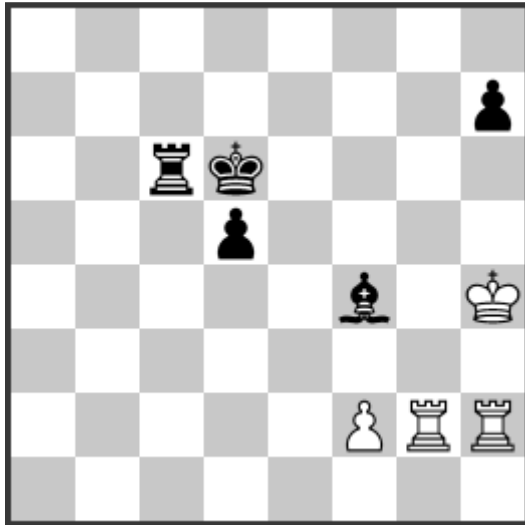
**a) 1. Rxf4 Rxe8 2. Kxf3 Se6 3. Ke4 Sd4#**

**b) 1. Rxe4 Rxf8 2. Kxe3 Bf6 3. Kf4 Bd4#**

*Indian, Zilahi, flight-giving moves, delayed Umnov effects, battery mates, Forsberg-twins.*

Marcin Banaszek, Laura-Schradin-Weg 64, 72762 Reutlingen, Germany  
email: [marcin@m-banaszek.de](mailto:marcin@m-banaszek.de) 05.01.2016

**Marcin Banaszek**, after Packa 2013  
Die Schwalbe, 8/2013 #15648  
For the WCCI 2013-2015 **H5**



**H#3 a) b) Pd5>e5 c) Pd5>f5 (4+5) C+**

White: Kh4, Rg2, Rh2, Pf2 (4)  
Black: Kd6, Rc6, Bf4, P: d5, h7 (5)

**Helpmate in 3 moves, 1.1.1.1.1.1**

a) 1. **Be3 fxe3** 2. Kc5 Rb2 3. Rd6 Rhc2#

b) 1. Kd5 **f3** 2. Re6 Rc2 3. **Bd2** Rhxd2#

c) 1. **Bg3+ fxg3** 2. Ke5 Rd2 3. Rf6 Rhe2#

**Sacrifice of black Bishop (3), white line-opening (3), chameleon-echo mates (3), Albino (3/4), echo-plays of two black (bK-bR) and two white (wR-wR) pieces.**

Marcin Banaszek, Laura-Schradin-Weg 64, 72762 Reutlingen, Germany  
email: [marcin@m-banaszek.de](mailto:marcin@m-banaszek.de) 05.01.2016

**Marcin Banaszek**

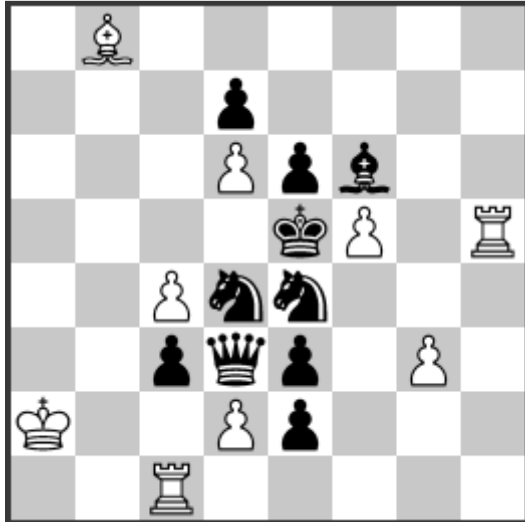
Warsaw Solving Grand Prix 2013

Rozmaitosci Szachowe, 25.02.2014 #1845

5. Prize

For the WCCI 2013-2015

H6



**H#2**

**2.1.1.1**

**(9+10) C+**

White: Ka2, Rc1, Rh5, Bb8, P: c4, d2, d6, f5, g3 (9)

Black: Ke5, Qd3, Bf6, Sd4, Se4, P: c3, d7, e2, e3, e6 (10)

**Helpmate in 2 moves**

1. **Sxf5** Rd1 2. **Qxd6** d4#

1. **Sxd6** Rxc3 2. **Qxf5** Rxe3#

**Black line-opening** by bS, **white line-opening** by bQ, double black self-pin, double pin-mates.

Marcin Banaszek, Laura-Schradin-Weg 64, 72762 Reutlingen, Germany

email: [marcin@m-banaszek.de](mailto:marcin@m-banaszek.de)

05.01.2016