

WCCI 2013 – 2015

H#

Emanuel Navon

Israel

Emanuel Navon Arlosorov 108 Holon 5838407 **Israel**
e_navon@zahav.net.il

8/2015
564 ♣

Emanuel Navon
Israel
TT 149 "Wigwag" Superproblem 2015

2nd Prize

	8/15 n 663 n 1. Bxb6 cxb8=Q 2. Bd4 Qxb5# 1. Rxc4 c8=Q 2. Rd4 Qh3#
(7+12)	h#2

An interesting strategy based on an annihilation of a white unit with a clear interrelationship between thematic pieces producing an effect of mutual interference Grimshaw. Judge

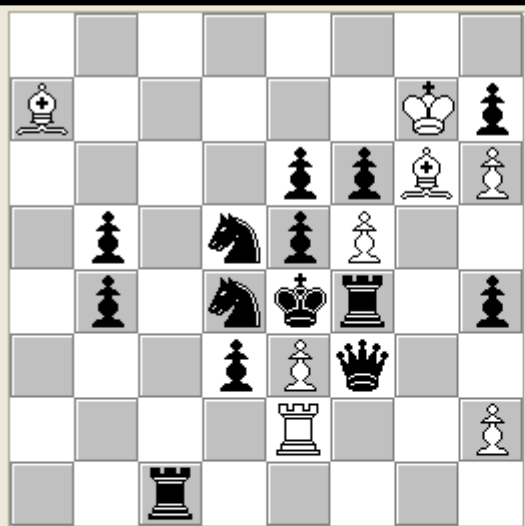
Theme: In initial position of an orthodox helpmate in two, a liner piece stands on square X. On the first move, she moves along any line and – on the second move – the same piece moving along the same line in an opposite direction, passing through the square X. At least two phases are required.

Emanuel Navon Arlosorov 108 Holon 5838407 **Israel**
e_navon@zahav.net.il

22/6/2015

551 ♁

5th Prize

	20/4/14 Π 617Π
	a) Diagram
	1. ... Be8!
	2. Sxe3 Kxf6
	3. Sdc2 Bc6#
	b) Kwg7->f7
	1. ... Rb2!
	2. Sxf5 Kxe6
	3. Sc3 Rxb4#
(8+14) b) Kwg7->f7 h#3 W	
Emanuel Navon Israel V Agostini 60 JT 2014 A	

Double destruction of battery: one exploited for pinning black and the other for mate. The manoeuvres are well ordered by the brilliant cooperation with the white king, who participates in operations for houses f5 and d5. An orchestra playing excellent symphony !

Theme: **Battery destruction** (white, black or both):

1. One side voluntarily destroys its battery by removal of rear piece, or by moving another piece to the battery line.
2. One of the units forming a battery is captured (definition in *FIDE Album*).

Emanuel Navon Arlosorov 108 Holon 5838407 Israel
e_navon@zahav.net.il

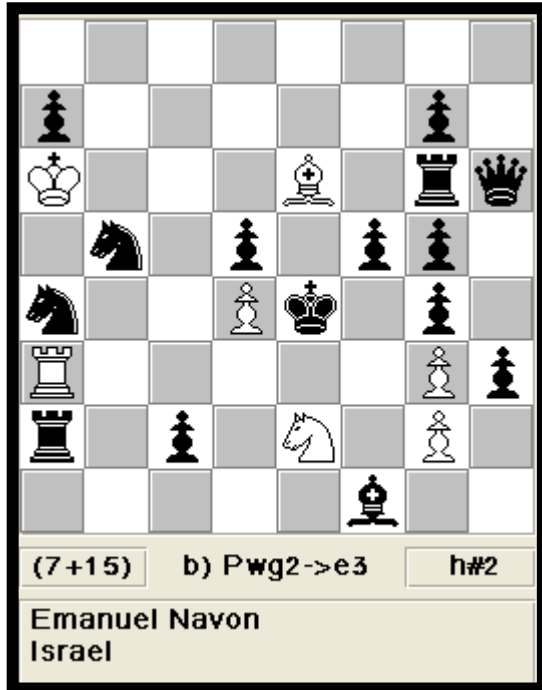
Sabra 2014

1st HM (version)

	<p>Haideaway Try: 1. Sb~ Sxd3 2.S~? Qa5 ? # Sol: 1. Bxb2 Rdx3 2. Sxd3 Qa5 #</p> <p>Haideaway Try: 1. R~(Rd6) Rd~ 2. R~(Rxe6) Qh8 ? # Sol: 1. Bxd2 Sxd3 2. Rxd3 Qh8 #</p>
(6+13)	h#2
Emanuel Navon Israel Sabra 2014 1st HM Version	

1/1/2013
567n
507 פ

**Orbit Vol VIII No.57 2/2013
No. 3558**



a) try: 1.Sd6? Rf3 2. ~ Bf5# ??
try: 1.Sb6 ? Rf3 ?

Sol: 1. Rb2 Rf3 2. Sb6 Bxf5#

b) try: 1. Sb6? Sf4 2. ~ Bd5# ??
try: 1. Sd6? Nf4?

Sol: 1. Bg2 Sf4 2. Sd6 Bxd5#

In each phase the 2 BS have to refrain from unpinning the WB in B1. Apparently, one of BS which have no disturbing departure effect, may unpin in B1, but its arrival includes a mate-preventing effect.

the second BS can't do it in B1, since he would have clear a masked pin line, paralysing the white piece (Ra3 or Be2 respectively).

This "anitziel - effect" have to be neutralised preventively by the key move.

An original setting of anticipatory direct unpin and indirect unpin of white pieces[ZJ]
A good idea [ns]

Emanuel Navon Arlosorov 108 Holon 58384 **Israel**
e_navon@zahav.net.il

נושא סברה 2012 – התרת כלי לבן במסע השני

540

2nd Priz.

	13/8/14 626 Π
	2 solutions
	1. ... Sxe5!
	2. Rg3 Sg4(Sc4?)
	3. Bd5 Bxg6#
	1. ... Sxb2!
	2. Bb3 Sc4(Sd1?)
	3. Rf5 Bc6#
	+
(6+8)	h#3 W
Emanuel Navon Israel 2 Azemmour Berne 2014 No. 2	

Despite the simplicity of the means, this idea is of great subtlety.
The Cb3 which pins himself, will need the support of the couple Tg5 / FG8 to be released.
In appreciation, knight cd3 will benefit Cd3 critical movements of this pair, cutting their control of matte lines.
While one couple Tg5 / FG8 performs the critical move with unpinning, the other performs a self-blocking. I liked.

Emanuel Navon Arlosorov 108 Holon 5838407 Israel
e_navon@zahav.net.il