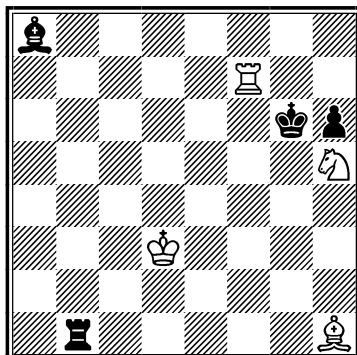


1. Anatolii Vasylenko
“SuperProblem” 2013
TT72 2nd Hon. Mention



H#2 **3 Sol** **4+4**
C+

1.Rg1 (Rb5?) Bd5 2.Rg5 Sf4# MM

1.Rb5 (Rf1?) Bf3 2.Rf5 Rg7# MM

1.Rb7 (Be4+?) Rf8 2.Kh7 Be4# MM

Название темы: “Матуют все фигуры”

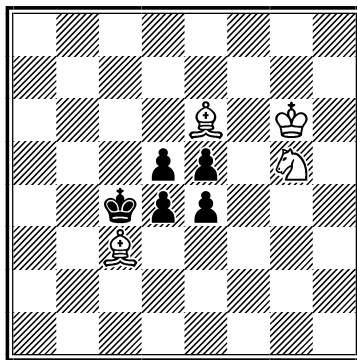
Раздел: #2, H#2

Тема: В действительном решении матуют все белые фигуры (пешки), которые имеются в начальной позиции. Не менее 3-х вариантов.

Судья: Микола Чернявський (UKR)

a-vasylenko@yandex.ru

2. Anatolii Vasylenko
 "SuperProblem" 2014
 TT114 2nd Comm.



H#3 2 Sol 4+5
 C+

1.Kc5 Sh7 2.Kd6 Bb4 3.K:e6 Sf8# MM

1.Kd3 Sf3 2.e:f3 Bd2 3.Ke4 Bf5# MM

Zilahi/Model mates

Tourney name: "Pawn black square"

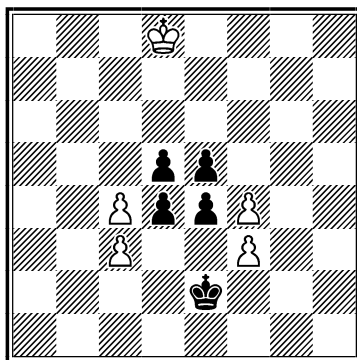
Stipulation: h#3-n

Theme: In the initial position there are black pawns on e4, d4, d5, e5. Any units and pawns of any colour may be on another squares. But the judge will appreciate particularly the problems where there is no black pawn on e3, d3, c4, c5, e6, d6, f4, f5.

Judge: Sébastien Luce.

a-vasylenko@yandex.ru

3. Anatolii Vasylenko
 "SuperProblem" 2014
 TT114 5nd Comm.



H#4 C+ 5+5
 b) Kd8→ e8

- a) 1. Kd3 c:d5 A
 2. Kc4 f:e4 B
 3. Kc5 c:d4 C
 4. Kd6 f:e5 D # Ideal Mate

- b) 1. Ke3 f:e5 D
 2. Kf4 c:d4 C
 3. Kf5 f:e4 B
 4. Ke6 c:d5 A # Ideal Mate

Ideal Mates
 ABCD – DCBA

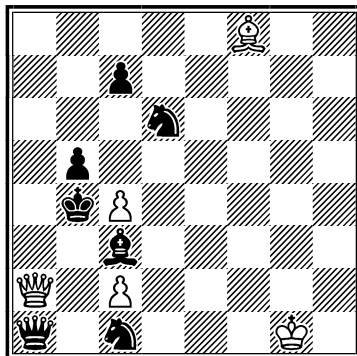
Tourney name: "Pawn black square"

Stipulation: h#3-n

Theme: In the initial position there are black pawns on e4, d4, d5, e5. Any units and pawns of any colour may be on another squares. But the judge will appreciate particularly the problems where there is no black pawn on e3, d3, c4, c5, e6, d6, f4, f5.

Judge: Sébastien Luce.

4. Anatolii Vasylenko
Belgrade Internet Tourney 2015
Comm.



*H#2 4 Sol 5+7
 C+

*1...Qa6! 2.Qa3 Q:b5#;

1.Qb2! Qa6! 2.Qa3 Q:b5#;

(1.c6 Qa6? 2.Qa3 Q:b5 3.c:b5! – *guarding b5*)

(1.c5 Qa6? 2.Qa3 Q:b5 3.S:b5! – *unpinning Sd6*)

(1.Bd2 Qa6? 2.Qa3 Q:b5 3.Kc3! – *unblocking c3*);

1.c6 c:b5! (1...Qa6?) 2.c:b5 B:d6#;

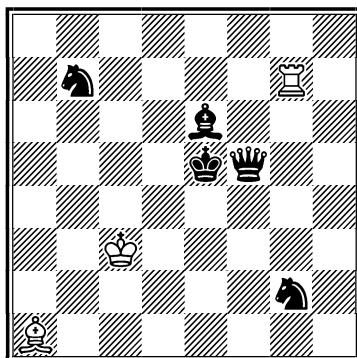
1.c5 Qa7! (1...Qa6?) 2.S:c4 B:c5#;

1.Bd2 Qa4! (1...Qa6?) 2.Kc3 B:g7#.

Thematic condition: *Contrasting effects of the same move: in one of the thematic phases (solution, set-play, or try – but not twin) the thematic move (by Black or White) is avoided because it produces a harmful tactical effect. In another phase (solution, set-play, or try – but not twin) the same thematic move produces **the same tactical effect**, but now this effect turns to be a **useful** one, needed to execute author's intention. At least three phases are required (no twins, no fairy elements).*

Judge: Marjan Kovačević (SRB)

5. Anatolii Vasylenko
“SuperProblem” 2015
TT 157 4nd Pr (as equal).



H#2 C+ 3+5

b)c)d) Ba1 → a8/h8/h1

- a) 1.Kf6 Kd4 2.Qe4+ K:e4#;
- b) 1.Sd6 Rb7 2.Kd5 Rb5#;
- c) 1.Qf4 Kd3 2.Sd6 Rg5#;
- d) 1.Sf4 Rg2 2.Ke4 Re2#;

Gravure with four battery mates by thematic pieces.

Tourney name: *"Corner twins"*

Stipulation: *h#2-n*

Theme: *The h#2-n problem has at least 4 twins (including diagram position) each of which is created by the shift the same white or black piece to all corner squares.*

Judge: Valery Kirillov (RUS).