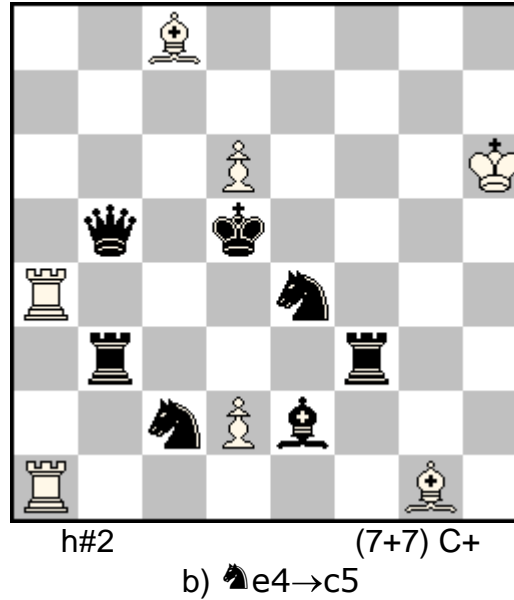


1 (E) - Juraj Lörinc
722 Pat a Mat 89, VIII 2014

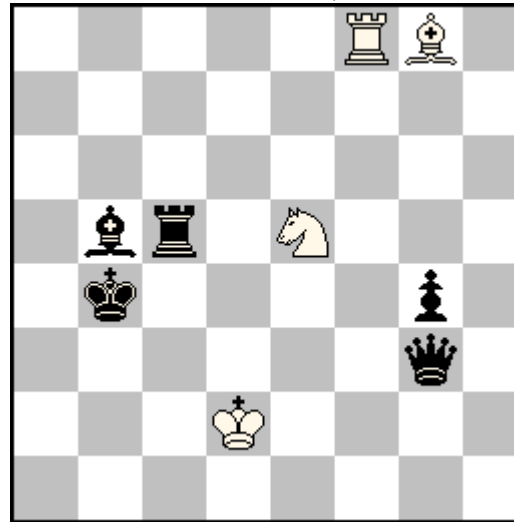


Blancs : Rh6 Ta4a1 Fc8g1 Pd6d2
Noirs : Rd5 Db5 Tb3f3 Fe2 Ce4c2

- a) 1.Re5 Tf1 2.Rf4 Fh2#
- b) 1.Rc6 Tb4 2.Rb6 Ta6#

Double pin model mates with cyclic change of functions of white pieces:
- a) Ra1 pins after move, Ra4 pins without moving, Bg1 checkmates
- b) Ra4 pins after move, Bg1 pins without moving, Ra1 checkmates

2 (E) - Juraj Lörinc
2nd Commendation Pat a Mat 2014
513 Pat a Mat 87, III 2014



h#2

(4+5) C+

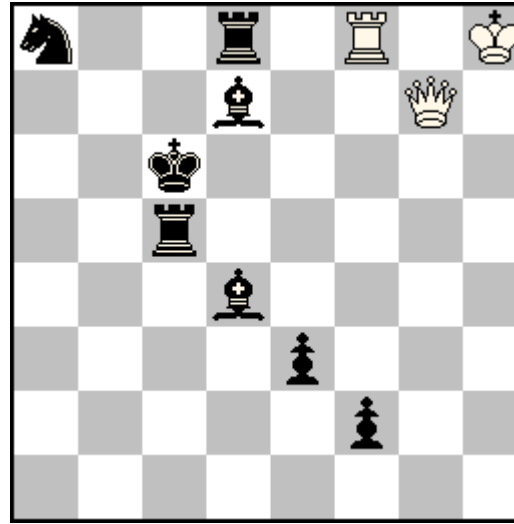
b) ♔b4→g2

Blancs : Rd2 Tf8 Fg8 Ce5
Noirs : Rb4 Dg3 Tc5 Fb5 Pg4

a) 1.D×e5 Tf7 2.Rc4 Tf4#
b) 1.T×e5 Ff7 2.Rf3 Fd5#

Orthogonal-diagonal transformation of strategy involving giving bK access to square where it would be checkmates – capture of Se5 and mutual interferences of wR/wB followed by double-check mates.

3 (E) - Juraj Lörinc
1st Honourable Mention Marianka 2013



h#2

(3+8) C+

b) ♔c6→a4

c) ♔c6→d1

Blancs : Rh8 Dg7 Tf8

Noirs : Rc6 Td8c5 Fd7d4 Ca8 Pe3f2

a) 1.Rd6 D×d4+ 2.Re7 Df6#

b) 1.Tb8 T×b8 2.Fa1 D×a1#

c) 1.Fe8 T×f2 2.Te5 Dg1#

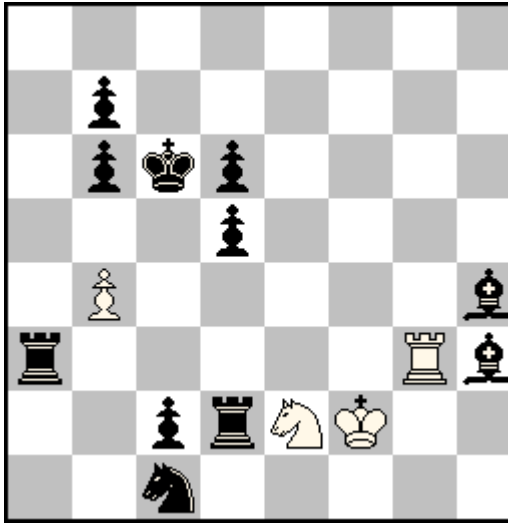
In each position both black moves have the same motivation (i.e. analogy within solutions, but differences between them):

a) moves of bK,

b) sacrifices along pin line (Bristol),

c) indirect upins.

4 (E) - Juraj Lörinc
1st Commendation Marianka 2013



h#2

(4+11) C+

- b) ♔f2→f7
c) ♕c6→b1

Blancs : Rf2 Tg3 Ce2 Pb4

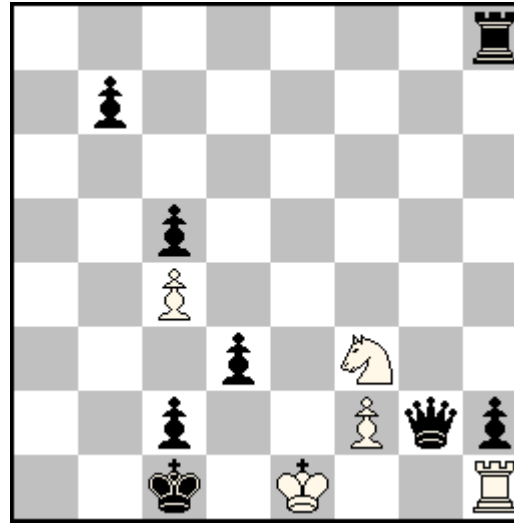
Noirs : Rc6 Ta3d2 Fh4h3 Cc1 Pb7b6d6d5c2

- a) 1.Fd8 Tg7 2.Td4 C×d4#
b) 1.Rb5 Cd4+ 2.Ra6 T×a3#
c) 1.Ta1 Rg1 2.Ca2 Tb3#

In each position both black moves have the same motivation (i.e. analogy within solutions, but differences between them):

- a) direct unpins with choice of arrival square,
b) moves of bK,
c) direct unguards of b3 and selfblocks.

5 (E) - Juraj Lörinc
 Special Honourable Mention Marianka 2014



h#2,5* (5+8) C+
 0.1.1.1.1 + 3.1.1.1.1

Blancs : Re1 Th1 Cf3 Pc4f2
 Noirs : Rc1 Dg2 Th8 Pb7c5d3c2h2

set play: 1.Dg7 Rf1 2.Db2 Rg2#

solutions

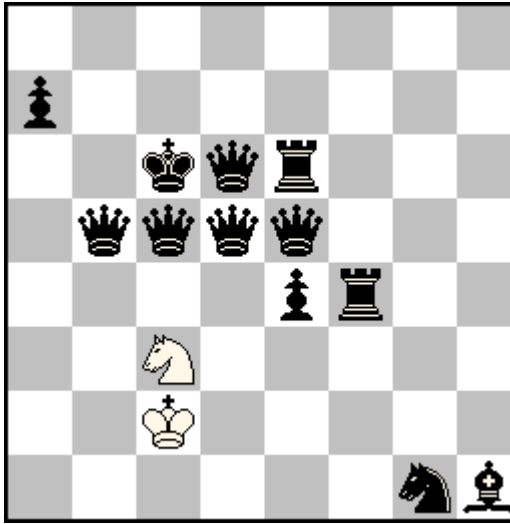
1...Cg1 2.Dxf2+ Rxf2 3.Rd1 Cf3#

1...Cxh2 2.Dg7 Cf3 3.Db2 0-0#

1...Cg5 2.Dxf2+ Rxf2+ 3.Rd2 Ce4#

Non-standard combination of phases (1 set play, 3 solutions) with prepared white royal battery activated in varied ways: move of wK to square vacated by bQ, transformation of battery to knight one, castling and it opening by capture of sacrificed queen. BQ is twice sacrificed, twice blocks b2.

6 (E) - Juraj Lörinc
7187 Phénix 249, IV 2015



h#5

(2+12) C+

- b) remove Pe4
- c) further remove Rf4

Blancs : Rc2 Cc3

Noirs : Rc6 Dd6b5c5d5e5 Te6f4 Fh1 Cg1 Pa7e4

a) 1.Cf3 Rc1 2.Cd4 Rd2 3.Ddc4! Cd1 4.Rd5 Re1 5.Dbc6 Ce3#

b) 1.Dcb4! C×b5 2.Ddd4! C×d4+ 3.Rd5 Cc6 4.Tc4+ Rd3 5.Tc5 C×b4#

c) 1.Dce3! C×d5 2.Dd7 C×e3 3.Dec7 Rc3 4.Rd6+ Rd4 5.Dbc6 Cf5#

Study in unpins and hideaways with very strong black material.