

WCCI 2013-2015

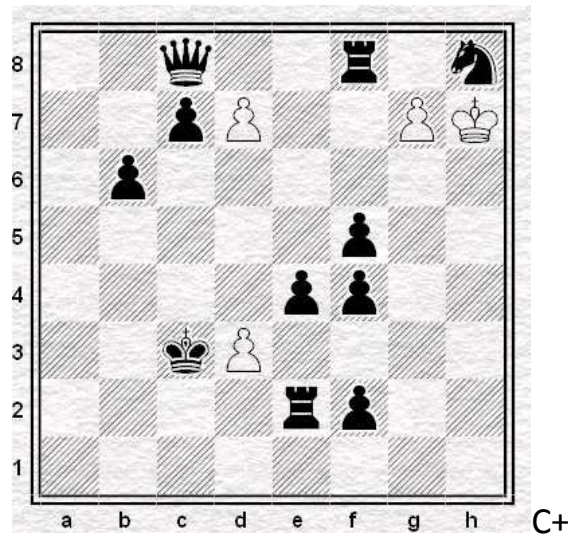
Helpmate

Dmitry Grinchenko

Yasinovataja-Ukraine

E-mail:dmgrinchenko@mail.ru

№1 2 Pr Newsletter ASIGC 2013



H#2

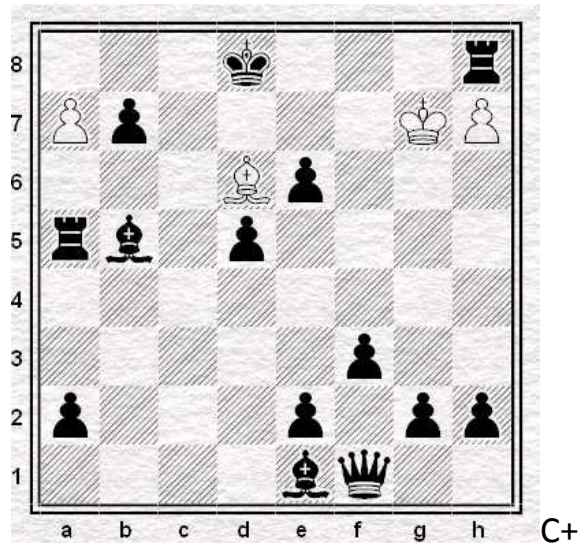
See Text

4+14

- a) Dia 1.K:d3 gh8Q 2.Ke3 Qc3#
- b) Re2->a5 1.Kb4 g8Q 2.Kb5 Qc4#
- c) Re2->b1 1.Kb2 gf8Q 2.Ka1 Qa3#
- d) Kc3->a6 1.Re8 de8Q 2.Qb7 Qa4#
- e) Re2->e6 1.Kd4 d8Q+ 2.Ke5 d4#
- f) pc7->b4 1.Kd2 dc8Q 2.Ke1 Qc1#

6 transformations of two white pawns into Q.

№2 H1235 Probleemblad 2014



H#2

See Text

4+14

a) Dia 1.Kc8 a8S 2.Rd8 Sb6#

b) pa7=Sa7 1.Re8 h8S 2.Bd7 Sf7#

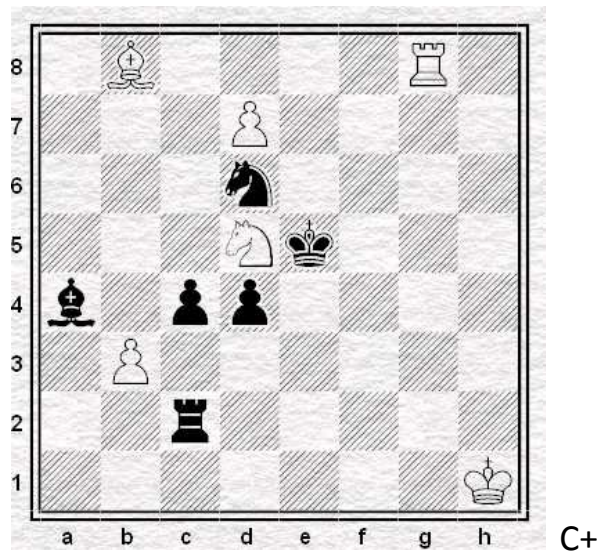
c=b) Kd8->a4 1.a1S Sc8 2.Sb3 Sb6#

d)Kd8->f2 1.h1S Be5 2.Sg3 Bd4#

Transformation on angular fields of white and black pawns into S.

№3 The 3rd FIDE Word Cupin Composing 2013

Comm.



H#2

4 Sol

6+6

1.Ke4 Rg3 2.Sf5 Sf6#

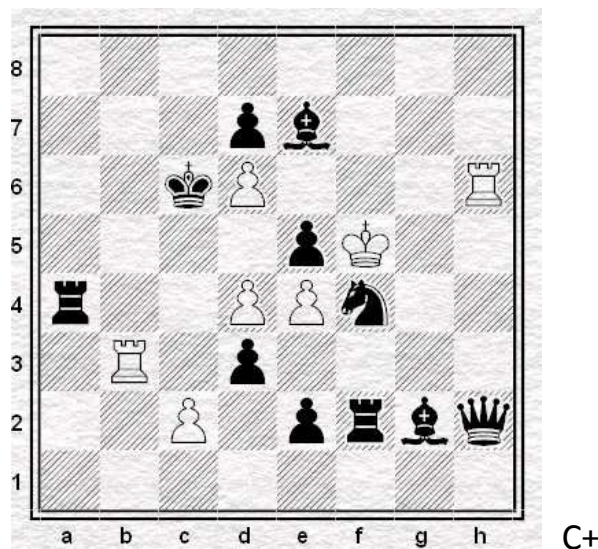
1.Kf5 Rg6 2.Se4 Se7#

1.Re2 d8S 2.Re4 Rg5#

1.Rf2 bc4 2.Rf5 Rd8#

Four-phase with changed bS-bR self-blocks and reciprocal bS-bK moves to e4 and f5.

№4 6798 Phenix 2013



H#2 4 Sol 7+11

1.R:d4 Rh8 2.R:d6 Rc8#

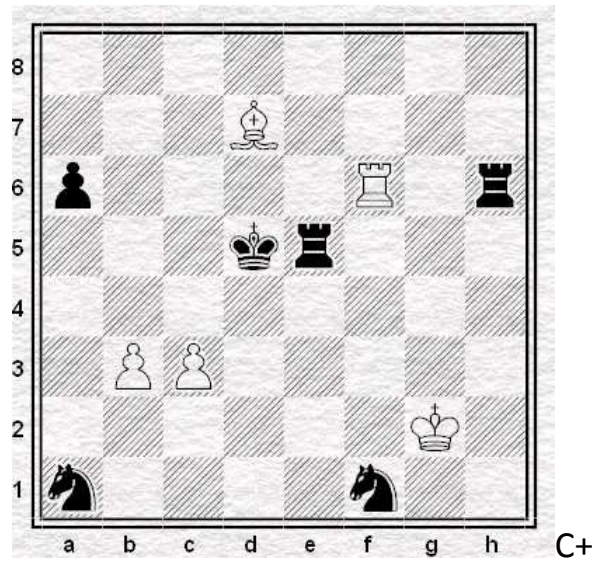
1.Q:h6 Rc3+ 2.K:d6 dc5#

1.Se6+ Kg4 2.Sc5 d5#

1.Bf3 c4 2.Sd5 cd5#

HOTF: Zilahi and game of black Sf4.

№5 3467 Idee&form 123 2014



H#2

4 Sol

5+6

1.Re4 R:a6 2.Rd6 Ra5#

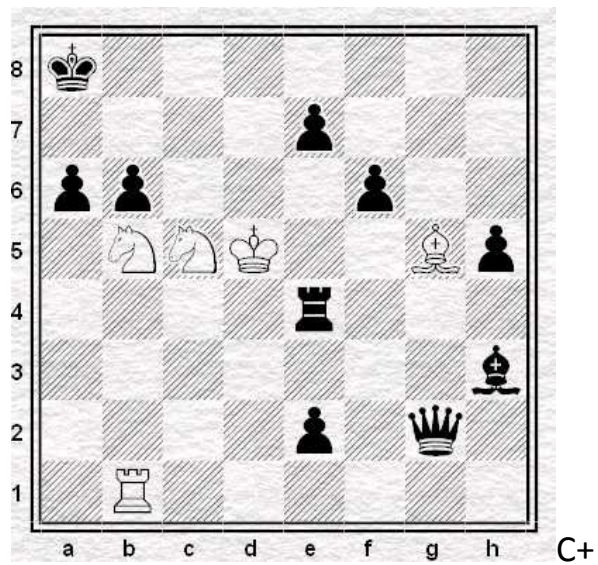
1.Re6 Kf3 2.Rd6 Rf5#

1.S:b3 Rf4 2.Sc5 Rd4#

1.Sd2 b4 2.Sc4 Bc6#

Aktive blocking of free fields black figures.

№6 2345 Variantim 59 2013



H#2

3 Sol

5+10

1.ab5 Bf4 2.b4 Ra1#

1.fg5 Rf1 2.g4 Rf8#

1.bc5 Be3 2.c4 Sc7#

Passive victims of white figures. After a capture black pawns continue the movement, blocking the figures and open the line.