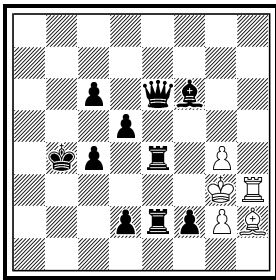


Silvio Baier
Pfortenhauerstr. 72
01307 Dresden
Germany
silvio.baier@gmx.de

1
Silvio Baier
16221 Die Schwalbe
2/2015 271



h#3,5 C+ (5+10)
b) ♜e4

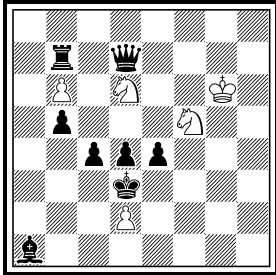
1) **Silvio Baier:**

- a) 1....Kf3 2.Kc3 Be5+ 3.Kd3 Kg3 4.Ke3 Kh2#
- b) 1....Kf4 2.Kc5 Rd3 3.Kd6 Kg3 4.Ke5 Kh3#

Klasinc & delayed Umnow with change of functions wR/wB

Silvio Baier
Pfortenhauerstr. 72
01307 Dresden
Germany
silvio.baier@gmx.de

2
Silvio Baier
16094 Die Schwalbe
10/2014 269
dedicated to Boris
Schrochow



h#3,5 C+ (5+8)
2;1...

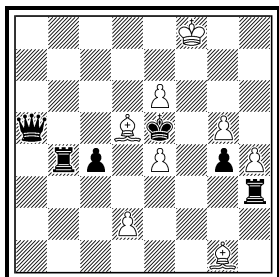
2) Silvio Baier:

- I) 1....Sxd4 2.Ra7 b7 3.Kxd4 b8=Q 4.Qxd6+ Qxd6#
- II) 1....Sxe4 2.Rc7 bxc7 3.Kxe4 c8=Q 4.Qxf5+ Qxf5#

Change of active and passive sacrifice of the knights, promotion and model mates on the squares occupied by the knights in the diagram. bPd4e4 reciprocally act as captured piece and block.

Silvio Baier
Pfortenhauerstr. 72
01307 Dresden
Germany
silvio.baier@gmx.de

3
Silvio Baier
15523 Die Schwalbe
4/2013 260
1. Honourable Mention
dedicated to Dmitrij
Grinchenko



h#2 C+ (8+6)
4.1;1.1

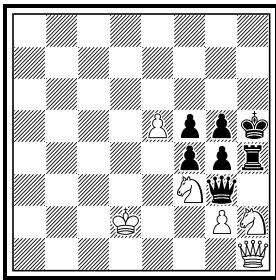
3) Silvio Baier:

- I) 1.Rd3 Bf2 2.Rd4 Bg3#
- II) 1.Qa1 Bb6 2.Qd4 Bc7#
- III) 1.Kf4 Bc5 2.Rf3 Bd6#
- IV) 1.Kd6 Be3 2.Qc5 Bf4#

HOTF with two pairs of connected solutions. In both pairs one selfblock and model mate of Bg1 on the same diagonal.

Silvio Baier
 Pfothenhauerstr. 72
 01307 Dresden
 Germany
 silvio.baier@gmx.de

4
Silvio Baier
16274 Die Schwalbe
4/2015 272



h#2* C+ (6+7)
 2.1;1.1
 b) ♖h1 → e2

4) Silvio Baier:

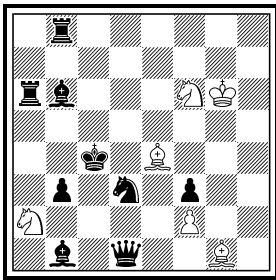
- a) *) 1....Sxh4 2.Kxh4 Sf3#
- I) 1.Rxh2 Sxh2 2.Kh4 Sf3#
- II) 1.Qxh2 Sxh4 2.Kxh4 Qxh2#
- b) *) 1....Sxg4 2.Kxg4 Sh2#
- I) 1.gxf3 Sxf3 2.Kg4 Sh2#
- II) 1.Qxf3 Sxg4 2.Kxg4 Qxf3#

Paradoxical capture of the set mate knight with identical mating picture including Zilahi. Capture of both knights in the second pair with perfect unity between the twins.

Silvio Baier
Pfotenhauerstr. 72
01307 Dresden
Germany
silvio.baier@gmx.de

5

Silvio Baier
16216 Die Schwalbe
2/2015 271



h#2 C+ (6+9)
2.1;1.1

5) Silvio Baier:

I) 1.Sxf2 Se8 (Bb7??) 2.Sd3 (S~?) Sd6#

II) 1.Bxf2 Bb7 (Se8??) 2.Bb6 (L~?) Bxa6#

Annihilation of Pf2 with dual avoidance due to the pin of a white piece. Switch-back in B2, since another opened line has to be reclosed.