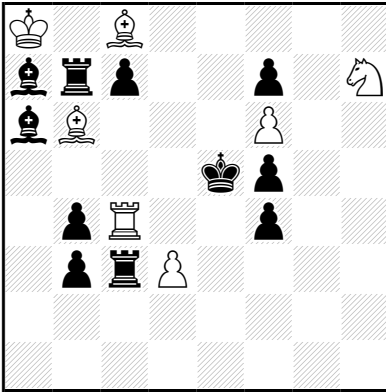


1

Francesco SIMONI
KoBulChess 2013
3° Honorable Mention



K1B5/brp2p1N/bB3P2/4kp2/1pR2p2/1prP4/8/8

h#2 (7+11) C+

b) ♖h7→e4

c) ♜f5→g5

a)

1.R×d3 (B×c4?) Be3 2.Rd5 B×f4‡

b)

1.B×c4 (R×b6?) B×b7 2.Be6 d4‡

c)

1.R×b6 (R×d3?) Be6 2.Rd6 Re4‡

Cyclical Zilahi with complete cycle of functions of three white units (capture, mate, support of the mating piece). Diagonal - orthogonal echo in black sequences of moves, with cyclical dual avoidance in B1. To self-block in B2 one of the squares d5, e6, d6, black could choice between two of three different moves in B1, but only one is successful, in cyclical form.

Anti-dual cyclique

Zilahi cyclique

Echo diagonal-orthogonal

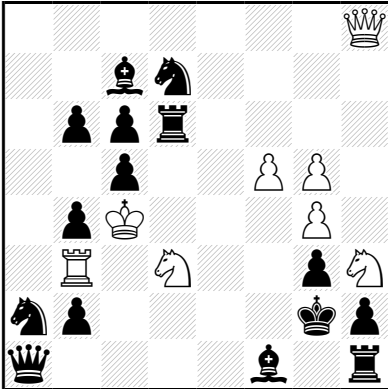
Auto-blocage

Source :

177, KoBulChess (avr. 13)

2

Francesco SIMONI
KoBulChess 2015



7Q/2bn4/1ppr4/2p2PP1/1pK3P1/1R1N2pN/np4kp/q4b1r

h#2 (8+15) C+

b) ♖a2→b1

a)

1.Sc1 Q×b2+(R×b2+?) 2.Se2 Sdf4‡

1... R×b2+? 2.Se2 Se1?

b)

1.Re6 R×b2+(Q×b2?) 2.Re2 Se1‡

1... Q×b2+? 2.Re2 Sdf4?

Black moves a piece twice, to indirectly unpin the mating one, with reciprocal dual avoidance for black line opening. The unpinning piece however, after its second move, would avoid the mate for direct guard, so white has to check, to force the direct selfpin of the black piece and to perform so a pin mate. In W1 there is reciprocal dual avoidance for loss of guard: white could check with any of two different units, but just what will be replaced by the mating unit as flight controller can be chosen.

Source :

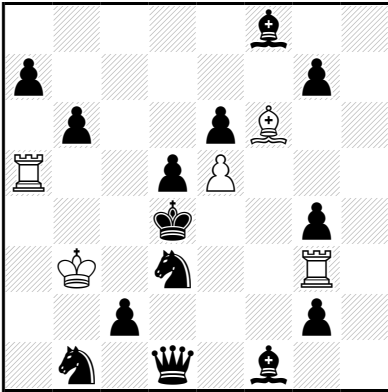
509, KoBulChess (jan. 15)

3

Francesco SIMONI

1° Azemmour, Batoumi 2013

4° Prize



5b2/p5p1/1p2pB2/R2pP3/3k2p1/1K1n2R1/2p3p1/1n1q1b2

h≠2,5

(5+14) C+

3.1.1...

- I) 1...Be7 2.Sf4 (Sc1+?) Bd6 3.Se2 Ra4‡
- II) 1...Rc5 2.Se1 (S×e5?) Rcc3 3.Sf3 R×g4‡
- III) 1...Re3 (R×g2?) 2.S×e5 Re1 (Re2?) 3.Bd3 B×e5‡

Improvement of white guard in cyclical form. In the diagram position each of three white pieces guard a different flight; in each solution, one of these white pieces in turn moves twice to improve its position of guard and so:

- 1) it maintains the guard on the original flight and it takes the guard on the flight originally guarded by one of the other two pieces, in cyclical form;
- 2) this second white piece moves to mate, in cyclical form. Complete cycle in the roles of the three white pieces (improvement of the guard, mate, static guard).

All B1 moves are played by the same piece bSd3. In I and II the bS moves twice to interfere in B2 (pure interferences). In III the bS moves to sacrifice itself in the square of mate.

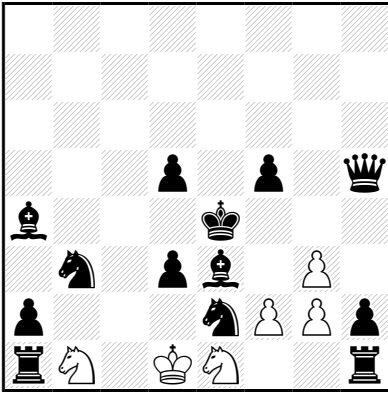
	In the diagram position		In mate position
I	wBf6 guards e5	A	wB guards e5, c5 A, B
II	wRa5 guards c5	B	wR guards c5, e3 B, C
III	wRg3 guards e3	C	wR guards e3, e5 C, A

	Thematic piece		Mating piece		Static piece	
I	wBf6	X	wRa5	Y	wRg3	Z
II	wRa5	Y	wRg3	Z	wBf6	X
III	wRg3	Z	wBe6	X	wRa5	Y

Award: <http://www.maroc-echecs.com/Award-de-la-1ere-edition-du>
 Reproductions : p.230, Best Problems 70 (avr. 14)

4

Francesco SIMONI
Orbit 2013
1° Mention d'Honneur



8/8/8/3p1p1q/b3k3/1n1pb1P1/p3nPPp/rN1KN2r

h≠2,5* (6+13) C+

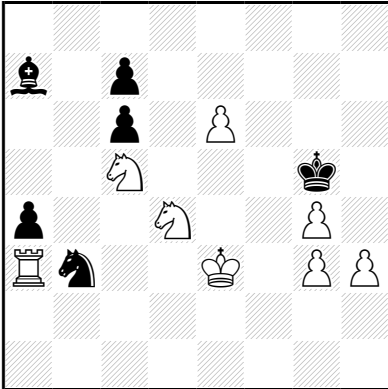
1.Sg1+ Sf3 2.Bc1 (Sbc1?) Sc3‡
1...f4 2.Bg1 (Seg1?) Sc2 3.Sbc1 (Sec1?) Sd2‡

Indirect w/b unpins in both black moves; wSe1 moves avoid black battery checks; wPf2 and wSe1 alternates in the guard of squares e3/e5 and their moves specify the choices of the unpinning black pieces.

Source:
3605, Orbit N.58, May 2013

5

Francesco SIMONI
Best Problems 2013



8/b1p5/2p1P3/2N3k1/p2N2P1/Rn2K1PP/8/8

h≠3 (8+6) C+
2.1.1...

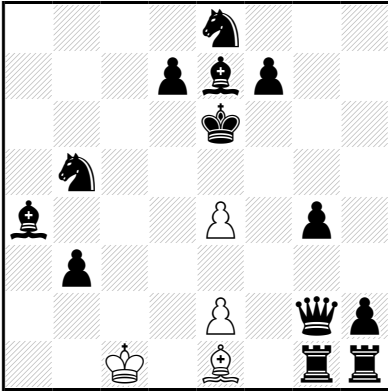
1.S×d4 Rd3 2.S×e6 Rd6 3.Sd4 Se4‡
1.S×c5 Rc3 2.S×e6 R×c6 3.Sc5 Sf3‡

Three consecutive moves by a bS to open white lines, with pin in B2 and then unpin in B3 of the mating piece.
Annihilation of the redundant white units, Switchback and Zilahi.

Source :
3054, Best Problems 66 (avr. 13)

6

Francesco SIMONI
Problemiste 2013



4n3/3pbp2/4k3/1n6/b3P1p1/1p6/4P1qp/2K1B1rr

h#4 (4+13) C+
2.1.1...

1.Sd4 e3 2.Bb5 e×d4 3.Bf1 Bc3 (Bg3?) 4.Sd6 d5‡
1.Qf3 e×f3 2.Sc3 f4 3.Sd1 Bg3 (Bc3?) 4.Sf6 f5‡

1.Sd4 3.... Bg3? 4.Sf6? d5?
1.Qf3 ... 3... Bc3? 4.Sd6? f5?

A black piece moves to sacrifice itself in B1, to deviate the white pawn that will capture it; in B2 and B3 a black piece moves twice to indirectly unpin a wB in B3. The unpinned wB moves behind the pawn (ambush) and forms an indirect battery with it, in order to guard two flights as soon as the battery will fire: dual avoidance in the choice of the line to guard with the wB, because of the direct guard in the next self-block in B4. Model mates.

Embuscade
Anti-dual

Source :
#121, 2013/11, <http://www.problemiste.fr/#/2013-9/4415758>