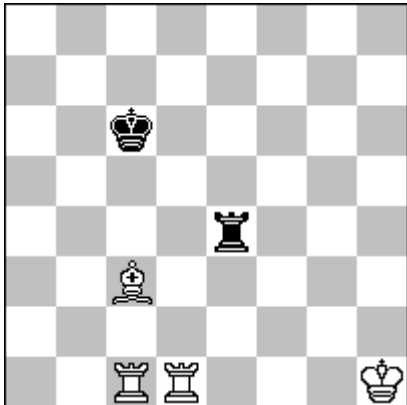


E1. Karol Mlynka, Slovakia (Wolkrova 3, 85101 Bratislava 5 – karol.mlynka@pobox.sk)

H1847 StrateGems 10-12, 2013 = C+



H#2 2.1.1.1 b) Bc3→c4 (4+2)

a) 1.Re6 Bd4+ 2.Kd6 Bf6#,

1.Kc5 Bd2+ 2.Kd4 Bf4#;

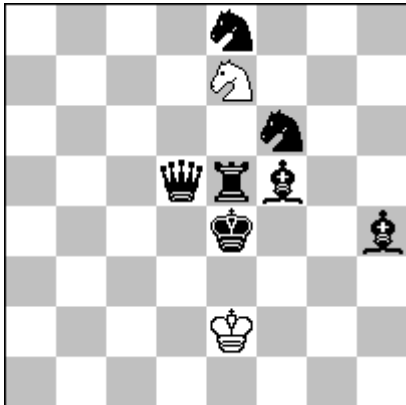
b) 1.Re7 Bd5+ 2.Kd7 Bf7#,

1.Re5 Bd3+ 2.Kd5 Bf5#.

Change of battery. 4-fold chameleon-echo model-mates. Blocking. Miniature. Black Minimal. Aristocrat.

E2. Karol Mlynka, Slovakia (Wolkrova 3, 85101 Bratislava 5 – karol.mlynka@pobox.sk)

5th HM V. Barsukov -75 JT 2014 = C+



H#3 b) Se7→d7 (2+7)

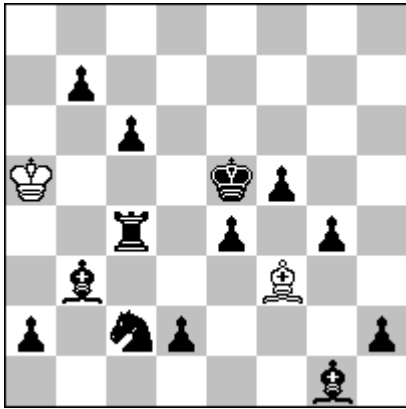
5th HM V. Barsukov -75 JT C 21.05.2014 – award: 20.09.2014 JT "Valery Barsukov-75" (helpmates)
www.selivanov.ru

a) 1.Be6 Se7*d5 2.Kf5+ Kf3 3.Bg5 Sd5-e7#;

b) 1.Re6 Sd7*f6+ 2.Ke5 Ke3 3.Sd6 Sf6-d7#.

WS-minimal, aristocratic meredith, Grimshaw, Umnov, change of distant blocks on e6, near blocking on g5 and d6, chameleo-echo model-mates, switchbacks.

E3. Karol Mlynka, Slovakia (Wolkrova 3, 85101 Bratislava 5 – karol.mlynka@pobox.sk)
E185 SuperProblem 28.10.2015



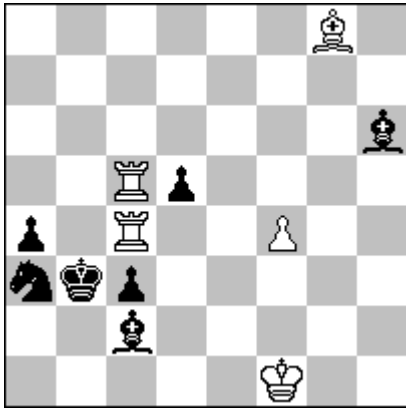
H#4 b) Bf3→c1 (2+13)

a) 1.Kf4 Bf3*e4 2.Kg3 B*f5 3.Kg2 B*g4 4.Kh1 Bf3#;

b) 1.Kd4 Bc1-a3 2.Kc3 Bb4+ 3.Kb2 B*d2 4.Ka3 Bc1#.

2 Rundlaufs of wB with model mates in white minimal.

E4. Karol Mlynka, Slovakia (Wolkrova 3, 85101 Bratislava 5 – karol.mlynka@pobox.sk)
E180 SuperProblem 12.10.2015 = C+



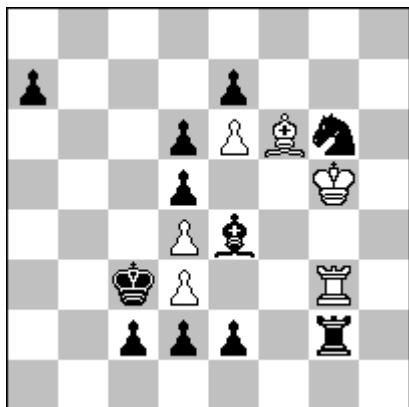
H#2 b) Kb3→h5 (5+7)

a) 1.S*c4 R*d5 2.Sa3 Rb5#;

b) 1.B*f4 B*d5 2.Bh6 Bf7#.

Change of white battery, change of function, Black blocking-switchbacks after annihilation, model mates.

E5. Karol Mlynka, Slovakia (Wolkrova 3, 85101 Bratislava 5 – karol.mlynka@pobox.sk)
2nd HM TT-153 SuperProblem 2015 = C+



H#3 b) Be4→e5 (6+11)

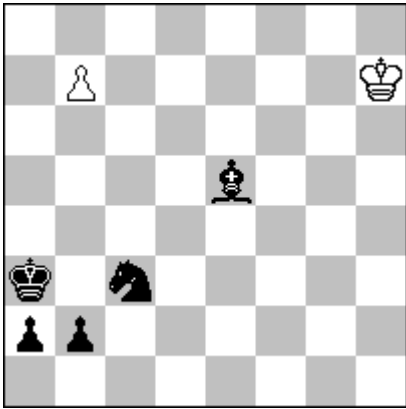
17 TT-153 SuperProblem 13.10.2015 – award SuperProblem 1.11.2015

a) 1.B*d3 Rg3*g2 2.Bc4 Kf5 3.Kd3 Rg2-g3#;

b) 1.B*d4 Bf6*e7 2.Bc5 K*g6 3.Kd4 Be7-f6#.

Annihilation, Black selfpin, White unpinning, blocking, Umnov, Switchback and model mates.

E6. Karol Mlynka, Slovakia (Wolkrova 3, 85101 Bratislava 5 – karol.mlynka@pobox.sk)
E183 SuperProblem 27.10.2015



H#3 b) Kh7→h1 (2+5)

a) 1.b1=R b8=Q 2.Rb4 Q*e5 3.Ra4 Q*c3#,

b) 1.b1=B b8=B 2.Kb2 B*e5 3.Ka1 B*c3#.

Different promotions for blocking and model mates on the same square after the same way of white play in a wP-minimal miniature.