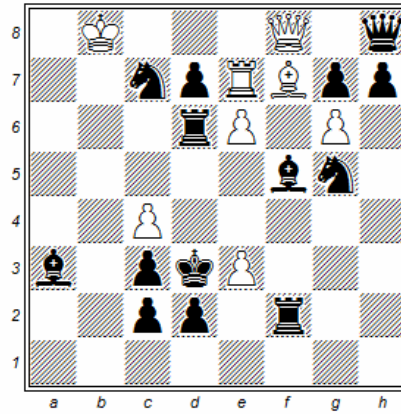


1
Franz Pachl
Schach-Aktiv 2013

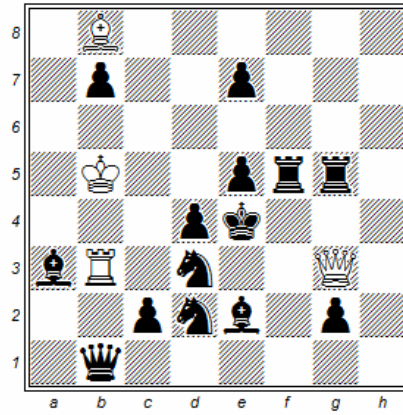


H#2 (8+14)

- b) wPc3
- c) bPc2→e2
- d) bPc2→d2

- a) 1.Bxe6 Qg8 2.Bxc4 Bxc4#
- b) 1.Rxe6 Qe8 2.Rxe3 Rxe3#
- c) 1.Sgxe6 Bg8 2.Sf4 Qxf5#
- d) 1.Scxe6 Re8 2.Sc5 Qxd6#

2
Franz Pachl
Rochade-Europa 2013



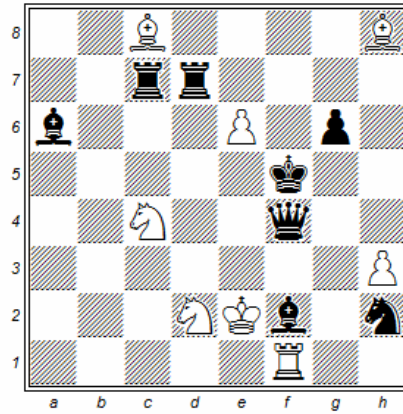
H#2 (4+14)

b) bRf5→h5

a) 1.Sc4 Qxd3 2.Kf4 Qxd4#

b) 1.Bc5 Qxe5 2.Kf3 Qf4#

3
Franz Pachl
Schach 2013
1. Prize



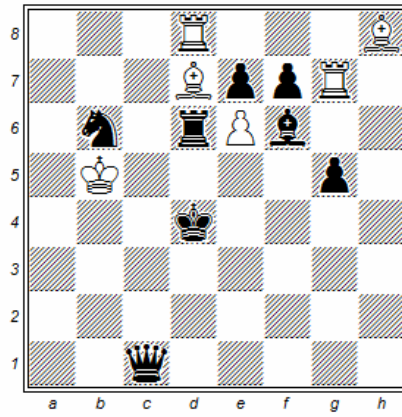
H#2 (8+8)

b) wKe2→c2

a) 1.Rd3 Se4 2.Bd4 Sd6#

b) 1.Bc5 h4 2.Rd4 Se3#

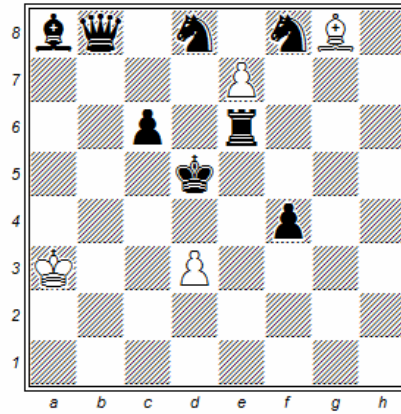
4
Franz Pachl
Schach 2015



H#2 (6+8)
b) wKf3

- a) 1.Kd5 Rg6 2.Bc3 Bc6#
- b) 1.Ke5 Bc8 2.Rd2 Rxc5#

5
Franz Pachl
Quick-Composing-Tourney
Leutersdorf 2015
3. Prize

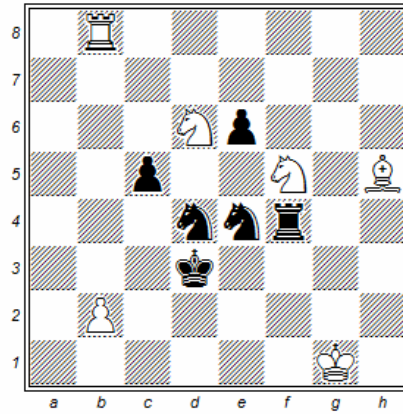


H#2 (4+8)

- b) bPc6→b5
- c) wPd3↔bPf4

- a) 1.Ke5 exf8=Q 2.Rf6 Qc5#
- b) 1.Kc5 exd8=Q 2.Tc6 d4#
- c) 1.Kd4 e8=Q 2.Rd6 Qe5#

6
Franz Pachl
Quick-Composing-Tourney
Leutersdorf 2015
4. Prize



H#2 (6+6)
2.1.1.1.

1.Sxf5 Rd8 2.Ke3 Sc4#
1.Sxd6 Bg6 2.Kc4 Se3#