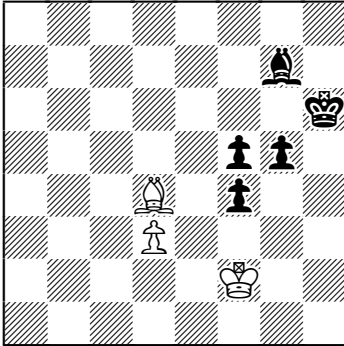


N°1

Springaren 2015



h#4½ b) Bd4→d2 (3+5)

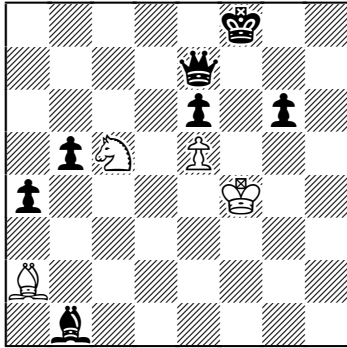
- a) 1...Kf3 2. g4 (Be5?) Kxf4 3.Be5+ Ke3  
4.Kg5 Kf2 5.Kf4 Be3#
- b) 1...Bxf4 2.Be5 (g4?) Bg3 3.g4 Kg2  
4.Kg5 Be1 5.Kf4 Bd2#

A complex of themes and ideas in a  
near miniature:

- A double Knight on the same square f4
- A white King's pyramid Rundlauf (not seen before)
- White Bishop's rectangular Rundlauf
- Dual avoidance on Black's first move
- Both mates are Ideal
- No technical captures (both captures on f4 are thematic)
- No technical pieces or cook stoppers
- Mates on different squares

N°2

StrateGems 68 2014 (v)  
1<sup>st</sup> Commendation



h#3½    b) **bSc5**    (4+7)

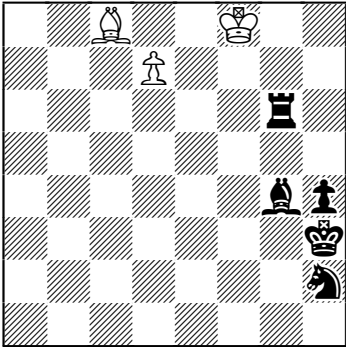
a) 1...Sxe6+ 2.Ke8 (Kf7?) Sd4 3.Kd7 Sb3 4.Ke6 Sc5#

b) 1...Bxe6 2.Sd7 Bf5 3.Kf7 Bxb1 4.Ke6 Ba2#

White Knight and Bishop Rundlauf, 2x Kniest capture on the same (!! ) square (g5). Meredith with only one non-thematic capture for both Rundlaufs. This complex is new.

N°3

StrateGems SG68 (v) 2014  
1<sup>st</sup> Commendation



h#2½ 2 solutions (3+5)

1...d8S 2.Be6 Sxe6 3.Qg3 Sf4#

1...d8R 2.Bd7 Rxd7 3.Qg2 Rd3#

Minor promotions.

Consecutive sacrifices by the black Bishop.

Creation of two white batteries with promoted pieces  
as a front piece.

Two self-blocks by the black Queen.

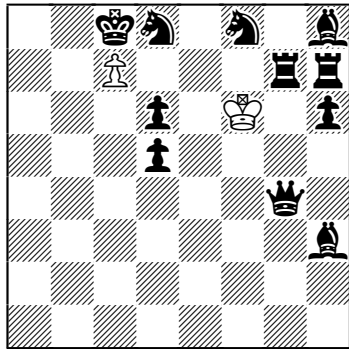
Two battery mates.

Near miniature.

No technical pieces.

N°4

The Problemist 2015



h#4½

(2+11)

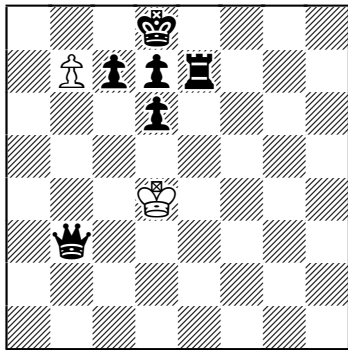
1...cxd8Q+??, 1...cxd8B?, 1...cxd8S?

1...cxd8R+ 2.Kc7 Rxf8 3.Kd7 Rf7+ 4.Ke8 Rd7 5.Kf8 Rd8#

First showing of promoted Rook Rundlauf combined with Kniest theme.  
Meredith.

N°5

StrateGems 69 2015



h#4½

(2+6)

1...b8B! 2.c6 Bxd6! 3.Qe6 Bc5 4.Kc7 Ba7 5.Kd6 Bb8#

Promoted Bishop Rundlauf combined with Kniest Theme.

There are no captures, except for the thematic capture of d6 Pawn.

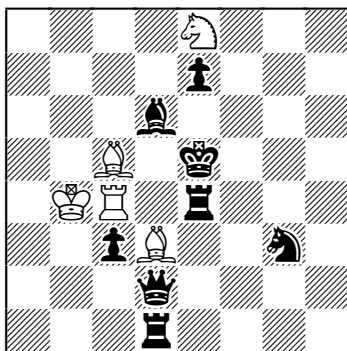
There are no cook stoppers or technical pieces. Near miniature. White minimal. Ideal mate.

N°6

WCCI 2013-2015  
Group E, h#

Mike Prcic  
2613 Northshore Lane  
Westlake Village, CA  
United States of America  
email: Tuzlak@aol.com

Problembiad 2015



h#2    2 solutions    (5+5)

1.Rxc4+ Kxc4 2.e6 Bxd6#

1.Bxc5+ Kxc5 2.Sf5 Rxe4#

Zilahi (White and Black) by like pieces, capture of black like pieces on the mating move, self-blocks on two different squares by guarding black pieces. Harmony between solutions.