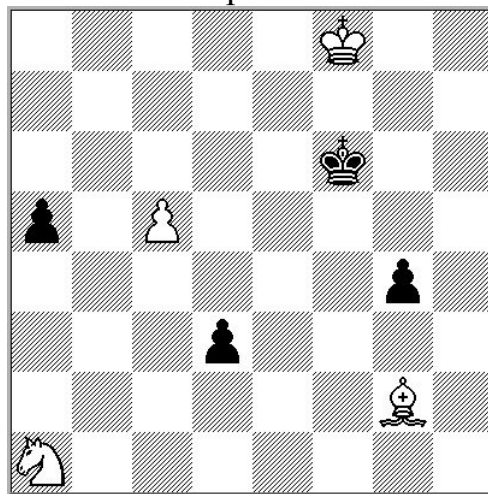


**Eduard Eilazyan**

JT “Gerhard Josten – 75”, 2013

I prize



Win

4+4=8

**Theme:** Required are studies with elements of **surprise or mysteriousness on some moves** with the additional conditions that **during the first ten moves White is neither allowed to capture any black pieces nor to deliver check more than twice**. Furthermore, in the starting position at least **eight pieces** are required. Puzzling moves in the solutions, according to the above mentioned thematic requirements, are denoted by two exclamation marks (!!).

**1.Nb3 a4 2.Nd2 a3 3.Bd5 Ke5 4.c6 Kd6 5.Kg7!!**

**Try1:** 5.Kf7? g3

**a)** 6.Nc4+ Kxd5! (but not 6...Kc7? 7.Nxa3 d2 8.Nb5+ Kb6 9.Nc3 win)

7.c7 a2! (but not 7...g2? 8.c8Q g1Q 9.Qe6+ Kc5 10.Qb6+ Kxc4 11.Qxg1 win)

8.c8Q a1Q 9.Qe6+ Kc5! draw.

**b)** 6.Ne4+ Kc7! 7.Nc3 d2 8.Nb5+ Kb6! draw. But not 6...Kxd5? 7.c7

7...a2 8.c8Q a1Q 9.Qe6+ Kd4 10.Qf6+ Kxe4 11.Qxa1 win, or

7...g2 8.c8Q g1Q 9.Qe6+ Kd4 10.Qb6+ Kxe4 11.Qxg1 win.

**Change of refutation** in variants **a)** and **b)** of the Try1.

**5...g3 6.Kh6!!**

**Try2:** 6.Kf6? Kxd5! 7.c7 a2! (not 7...g2? 8.c8Q g1Q 9.Qd7(b7)+ Kc5 10.Qa7+ +-) 8.Nb3 g2

(8...a1Q+) 9.c8Q a1Q+ 10.Nxa1 g1Q 11.Qe6+ Kc5! draw;

**Try3:** 6.Kg6? Kxd5! 7.c7 g2! (not 7...a2? 8.c8Q a1Q 9.Qd7+ Kc5 10.Nb3+ +-) 8.Nf3 a2 9.c8Q a1Q=.

**Change of refutation** of the Try2 and Try3.

**6...Kxd5 7.c7** and two symmetric main lines:

**A)** 7...a2 8.c8Q a1Q 9.Qd7+ (the first check!) **Ke5 10.Qg7+ Ke6 11.Qxa1** and wins

(the first capture of a black piece), or **9...Kc5 10.Nb3+** and 11.Nxa1 +-.

**B)** 7...g2 8.c8Q g1Q 9.Qd7+ (the first check!) **Kc5 10.Qa7+ Kc6 11.Qxg1** and wins

(the first capture of a black piece), or **9...Ke5 10.Nf3+** and 11.Nxg1 +-.

**Symmetric change of play** in variants **A** and **B**.

But why 5.Kg7!! and 6.Kh6!! ? Black can play 6...a2 and after 7.Bxa2 Kxc6 White win: 8.Bb1 g2

9.Nf3 d2 10.Bc2 Kd5 11.Kg5 Kc4 12.Kf4 Kc3 13.Bd1 Kb2 14.Ke3! Kc1 15.Ke2! Just-in-time!

All requirements of the given theme executed according to the principle "necessary and sufficient".

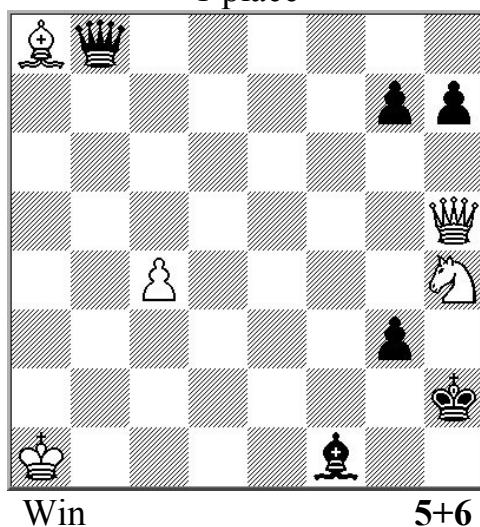
Awards: <http://www.arves.org/arves/index.php/awards/awards> Josten-75 JT 2013 PGN

e-mail: [edeilstudy@mail.ru](mailto:edeilstudy@mail.ru)

## Eduard Eilazyan

17 Team Championship of Ukraine, 2014

1 place



**Theme:** Choice of the exact move of the White (with the obligatory try) to create  
**a)** a final position of mate (stalemate), or  
**b)** an intermediate key position to move to the next phase (stage) of the solution.

**1.Nf3+ Kg2 2.Qd5 Qa7+ 3.Kb1!** Foresight effect! Choice of the exact move (format **b**).

**Thematic try (TT1):** 3.Kb2? Bxc4 4.Nh4+ Kh3 5.Qh1+ Kg4 6.Bf3+ Kg5 7.Qc1+ Kxh4 8.Qf4+ Kh3 9.Qf5+ Kh2. Thematic key position (wK on b2). 10.Qxh7+ (but not 10.Qc2+? because of 10.. Qf2!, and Queen is pinned!) 10...Kg1 11.Qh1+ Kf2 12.Qg2+ Ke1! draw, but not 12...Ke3? 13.Qg1+ Kxf3 14.Qxa7 win. Two main lines:

**A. 3...Bxc4 4.Nh4+! Kh3 5.Qh1+ Kg4 6.Bf3+ Kg5 7.Qc1+** (square c1 is free, see Try in **B**)  
**7...Kxh4 8.Qf4+ Kh3 9.Qf5+ Kh2.** Thematic key position (difference  $\Delta$ : wKb1- b2)  
**TT2:** 10.Qxh7+? Kg1 11.Qh1+ Kf2 12.Qg2+ Ke1! draw.

So White carries out a logical manoeuvre – relocation of the bB from c4 to e2.

**10.Qc2+!** Choice of the exact move to create a final position of mate (format **a**).

**10...Be2** (or 10...Qf2 11.Qxh7+ Kg1 12.Qh1#).

Now White carried the final mating attack, prepared by the exact moves 3.Kb1! and 10.Qc2+!

**11.Qxh7+ Kg1 12.Qh1+ Kf2 13.Qg2+ Ke1 14.Qxe2#** (difference  $\Delta$ : bBc4-e2).

**B. 3...Bd3+!?** Black carries out the logical maneuver to block the square c1.

**4.Kc1!** Choice of the exact move (format **a**).

4.Qxd3? Qxa8 5.Nd2 Qf8 6.Qxh7 Kg1 7.Qe4 g2 8.Kc2 Qf2=.

**TT3:** 4.Kb2? Bxc4 5.Ne1+ (5.Nh4+ Kh3... we saw in the TT1) 5...Kf1! 6.Qxc4+ Kxe1 draw. (If 6.Qh1+, then 6... Qg1 (or 6...Kf2, or 6... Ke2) ...=).

**4...Bxc4 5.Ne1+!** Change of solution! Choice of the exact move (format **a**).

**Try:** 5.Nh4+? Kh3 6.Qh1+ Kg4 7.Qe4+ (7.Bf3+? Kg5 no 8.Qc1??,  $\Delta$ : wKb1- c1, see **A**) 7...Kh3=.

**5...Kf2.** Or 5...Kf1 6.Qh1+ Qg1 (6...Ke2(f2) 7.Nc2! +- – difference  $\Delta$ : wKb2- c1) 7.Qe4 Qf2 8.Ng2 Be2 9.Ne3+ Kg1 (9...Ke1 10.Qb4#) 10.Qh1#.

**6.Qd2+ Kf1** (or 6...Kg1 7.Qg2#!; 6...Be2 7.Nd3+ Kg1 8.Qe1+ Bf1 9.Qxg3+ Bg2 10.Qxg2#)

**7.Bg2+ Kg1 8.Nf3#!** model mate.

The successive synthesis of the various formats of the given theme. Choice of the exact move realized in the different forms: foresight effect, logical manoeuvre and change of solutions.

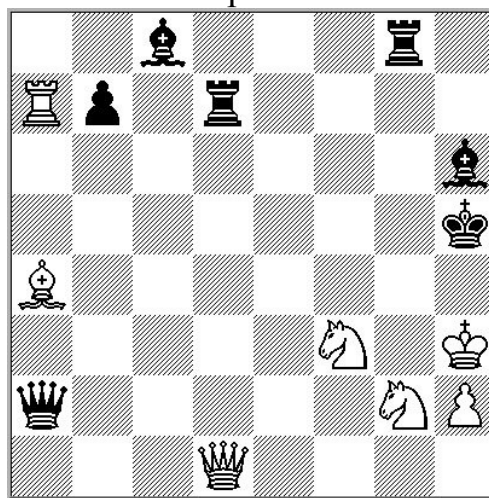
Awards: [http://www.chess-kopyl.com.ua/images/2014/10\\_14/17KCHU\\_Pidsumki-final.pdf](http://www.chess-kopyl.com.ua/images/2014/10_14/17KCHU_Pidsumki-final.pdf)

e-mail: [edeilstudy@mail.ru](mailto:edeilstudy@mail.ru)

## Eduard Eilazyan

16 Team Championship of Ukraine, 2013

2 place



Draw

7+7

**Theme:** In the main line of a study should be at least one stalemate with a pin of two white pieces (double-pin stalemate).

**1.Nd4+** the white battery! **1...Kg5!**

Quick draw after 1...Kg6 2.Bc2+ Kg7 3.Rxa2 Rxd4+ 4.Kg3 Rxd1 5.Bxd1=.

**2.Qc1+!** Do not rescues 2.Qg4+? Kf6 3.Bxd7 Bxd7 4.Rxa2 Rxc4 5.Rf2+ Kg6 6.Nf5 Rg5 7.Ngh4+ Kf6 8.Rb2 b5 9.Rb3 Bxf5+ 10.Nxf5 Rxf5-+.

**2...Kg6** discovered attack on the white queen. **3.Nh4+**

Early 3.Bc2+? Kf7 4.Qf1+ Bf4! 5.Qxf4+ Ke8 6.Kh4 Rh8+! 7.Kg3 Rh3+! 8.Kxh3 Rxd4+ 9.Kg3 Qg8+ 10.Kf2 Rxf4+ 11.Nxf4 Qc4 and White is defenseless.

**3...Kh7** [or 3...Kf7 4.Qf1+ Ke8 5.Qf5 Kd8 6.Ra8 Qd5 7.Qf6+ Re7+ 8.Rxc8+ Kxc8 9.Qxe7 Qxd4 10.Qe6+ Kc7 11.Qxg8=]

**4.Bc2+** discovered attack on the black queen.

**4...Kh8 5.Qxh6+ Rh7+** the black battery! **6.Bf5 Bxf5+**

Black has an interesting alternative in 6...Qf7 which requires exact play from White: 6...Qf7 7.Qf4! Qd5 8.Qf2! Rf8 (8...Qc4 9.Bxc8 Qc3+ 10.Qf3 Qxd4 11.Bg4=) 9.Qf4 Bxf5+ 10.Ndx5 Qd3+ 11.Kg2 Rg7+ 12.Kf2 Qc2+ 13.Kf3 Qd1+ 14.Kf2 Qg1+ 15.Ke2 Re7+ 16.Nxe7 Rxf4 17.Neg6+ Kg7 18.Rxb7+ Rf7 19.Rxf7+ Kxf7 20.Nf3 draw.

**7.Ndx5 Qb2** (7...Qxa7 8.Qf6+=; 7...Qb3+ 8.Qe3 Qxe3+ 9.Nxe3=)

**8.Rxb7! Qc3+!** [8...Qxb7 9.Qf6+]

**9.Ne3!** (But not 9.Qe3? Rxh4+ 10.Kxh4 Qf6+ 11.Kh3 Qxf5+ 12.Kh4 Qg4#)

**9...Qc8+** (9...Rg3+ 10.hxg3 Qc8+ 11.Nef5 Rxh6 12.Rb5=)

**10.Nef5 Rxh6 11.Rh7+ K(R)xh7** stalemate with pin of the knight by the diagonal, or

**10...Qc3+ 11.Ne3 Qc8+...** positional draw (the theme of "perpetual pin"), or

**11...Rxh6 12.Rh7+ R(K)xh7** stalemate with pin of the knight by the horizontal .

Two thematic model stalemates with a double pin of two white pieces are synthesized with the theme of "perpetual pin."

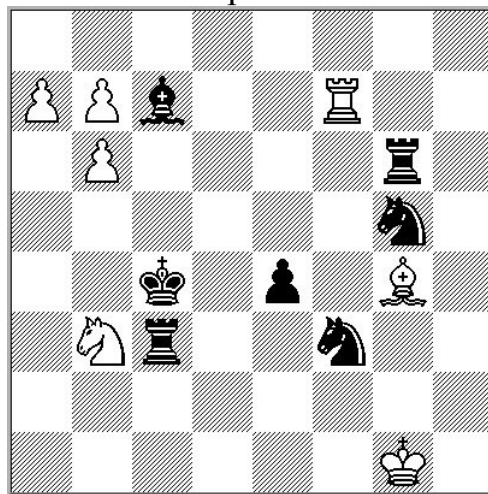
Awards: [http://www.chess-kopyl.com.ua/images/2013/10/Results\\_of\\_16\\_CU.pdf](http://www.chess-kopyl.com.ua/images/2013/10/Results_of_16_CU.pdf)

e-mail: [edeilstudy@mail.ru](mailto:edeilstudy@mail.ru)

**Eduard Eilazyan**

16 Team Championship of Ukraine, 2013

1 place



Draw

7+7

**Theme:** In the main line of study should be at least one stalemate with a pin of two white pieces (double-pin stalemate).

**1.Kf1!** [1.Kh1? Rh6+ 2.Kg2 Rc2+ 3.Kf1 Rh1#;

1.Kg2? Rc2+ 2.Kf1 Nh2+ 3.Ke1 Ngf3+ 4.Rxf3 Nxf3+ 5.Kd1 Kxb3 6.b8Q Rd6#]

**1...Nh2+** [1...Bxb6 2.b8Q Kxb3 3.Bxf3 exf3 4.Qxb6+ Rxb6 5.a8Q Nxf7 6.Qd5+ Kc2 7.Qxf7 draw]

**2.Ke2!** [2.Ke1? Ngf3+ 3.Rxf3 Nxf3+ 4.Kf1 Nh2+ 5.Ke2 Re3+ 6.Kxe3 Bxb6+ 7.Ke2 Bxa7 win]

**2...Re3+ 3.Kxe3**

[3.Kd2? Nxe4 4.Nd4 Rd3+ 5.Kc1 Be5 6.Rc7+ Kxd4 7.b8Q Ke3 8.a8Q Rh6... win]

**3...Bxb6+ 4.Kf4**

After 4.Ke2? Bxa7 5.Nd2+ Kd5 Black retains a material advantage and wins with an extra knight, eg., 6.Rf5+ Kc6 7.Bh5 Rg7 8.Rf6+ Kc7! 9.Ra6 Kb8 10.Rg6 Rxe6 11.Bxe6 e3 12.Nc4 Ne6 13.Be4 Nf4+ 14.Ke1 Bd4 15.Nxe3 Bxe3 wins.

**4...Bxa7 5.Nd2+** [5.Na5+? Kb4 6.Nc6+ Rxc6 7.Kxe6 Nxe6 8.Kxe6 Re6 win]

**5...Kc3 6.Nxe4+** [6.Bf5? Bb8+ 7.Ke3 Ng4+ 8.Ke2 Rf6 9.Rxf6 Nxf6 win.

6.Rd7? Nxe4 7.Kxe4 e3 8.Nf3 Nxf3+ 9.Kxf3 Rf6+ win;

6.Bh5? Nh3+! 7.Kxe4 Rg5 8.Nb1+ 8...Kb2 9.b8Q+ Bxb8 10.Rb7+ Kc1 11.Rxb8 11...Rxb8 win, (Endings R + X + Y vs. R + Z won, where X, Y, Z – minor pieces N or B)]

**6...Nxe4 7.Bf5** [7.Bh5? Rh6 8.Kxe4 Rxb8 9.Rc7+ Kb4 10.Rc2 Ka5 11.Rb2 11.Bb8 win]

**7...Rf6 8.Rc7+ Kd4**

[8...Nc5 9.Kg5 Rf8 10.Rc8 Nf3+ 11.Kg4! Ne5+ 12.Kg5 Rf7 13.Rxc5+ Kd4 14.Rb5 draw]

**9.b8Q** [9.Rd7+? Nd6--]

**9...Bxb8** stalemate.

Ideal stalemate in the middle of the board with two pinning white pieces.

All pieces (except pawns) in the study have moved.

In the final position all the pieces took their places during of play.

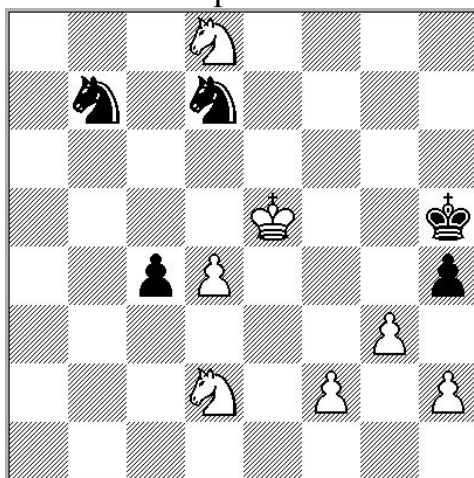
Awards: [http://www.chess-kopyl.com.ua/images/2013/10/Results\\_of\\_16\\_CU.pdf](http://www.chess-kopyl.com.ua/images/2013/10/Results_of_16_CU.pdf)

e-mail: [edeilstudy@mail.ru](mailto:edeilstudy@mail.ru)

**Eduard Eilazyan**

17 Team Championship of Ukraine, 2014

6 place



Win

7+5=12

**Theme:** Choice of the exact move of the White to create a final mate (stalemate) or to create an intermediate key position to move to the next phase (stage) of the solution, with the obligatory try.

**1.Ke6 hxc3 2.hxc3!** Choice of the exact move of the White!

**Thematic try (TT):** 2.fxc3? Nf8+ 3.Ke7 Ng6+ 4.Kd7

**Study in study:** *Black to play and draw.*

4...Nf8+ 5.Ke8 Nxd8 6.Nxc4 Nfe6! Choice of the exact move of the Black! !

**Try in TT (the false refutation of TT):**

6...Nde6? 7.d5 Nc7+ 8.Kxf8 Nxd5 9.Kf7 Kg4

Key position in Try (wK on f7).

10.h4! Kh5 11.Nd6 Nc3 (or 11...Ne3 12.Ne8! Nf5 13.Ng7+-) 12.Ne8! Ne4

13.Nf6+ with the obvious win after advantageous exchange.

7.d5 Nc7+ 8.Kxd8 Nxd5

Thematic key position in TT (here wp on h2).

9.Kd7 Kg4! The key position in refutation of TT (difference  $\Delta$ :Kd7 – f7).

10.Ke6 Nc7+ 11.Ke5 Kh3 12.Nd6 Na8 13.Ne4 Nb6 14.Nf2+ Kxh2 15.g4 Nc4+

16.Ke6 Ne3 17.g5 Ng2 18.g6 Nf4+ 19.Kf7 Nxc6 draw.

In the inner study the black knight moves on the closed route:

bNg6-f8-e6-c7-d5-c7-a8-b6-c4-e3-g2-f4-g6 (12 moves!).

**2...Nf8+.** The short variation with an amusing finale:

2...Ndc5+ 3.dxc5 Nxc5+ 4.Kf5! c3 5.Nf3 c2 6.Nf7 c1Q 7.g4#!

**3.Ke7 Ng6+ 4.Kd7 Nf8+ 5.Ke8 Nxd8 6.Nxc4 Nfe6**

Or 6...Nde6 7.d5 Nc7+ 8.Kxf8 Nxd5 9.Ne3! Nc3 (9...Nxe3 10.fxe3 Kg4 11.e4 Kxc3 12.e5)

10.f4 Ne2 11.g4+ Kg6 12.f5+ Kf6 13.Nd5+ win.

**7.d5 Nc7+ 8.Kxd8 Nxd5** Thematic key position in solution (difference  $\Delta$ :wpf2 – h2).

**9.Ne3! Nc3 10.f4 Ne2 11.g4+ Kg6 12.f5+** and wins.

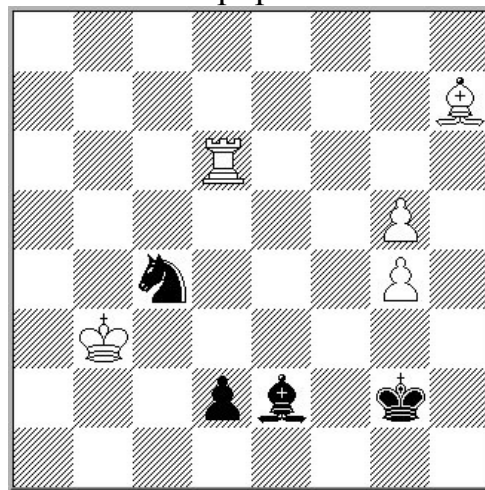
Awards: [http://www.chess-kopyl.com.ua/images/2014/10\\_14/17KCHU\\_Pidsumki-final.pdf](http://www.chess-kopyl.com.ua/images/2014/10_14/17KCHU_Pidsumki-final.pdf)

e-mail: [edeilstudy@mail.ru](mailto:edeilstudy@mail.ru)

**Eduard Eilazyan**

JT “Marcel DORE – 80”, 2013

2 sp. prize



Win

5+4

Section B. **Theme:** the entries (win or draw studies) must feature a strong ‘logical’ thematic try in which is reached, after a number of moves (foresight effect), a position similar to the one in main line of solution, with just a ‘small difference’.

**Thematic ‘logical’ try:** 1.Rd4? d1Q+! 2.Rxd1 Bxd1+ 3.Kxc4 Kf3!! and Black escapes with a stalemate defence: 4.Bf5 Kf4 5.g6 Kg5 6.g7 Kh6 7.g8Q(R) Bb3+ 8.Kxb3 stalemate. But not 1...Na5+? 2.Kc2! Nc4 3.Kc3 d1Q 4.Rxd1 Bxd1 5.Be4+! Kg3 6.Kxc4... and White wins as in the main line. Therefore White carried out the logical manoeuvre

**1.Be4+! Kg3 and now 2.Rd4!**

2.Rd8? Kf4 3.g6 Kxe4 4.Kc3 Bxg4 5.Kxc4 Be6+ =;

2.Rd5? Kf4! 3.Bc2 Ne3 4.Rxd2 Bc4+ 5.Kc3 Kxg5 6.Ba4 Be6 7.Re2 Nd5+ 8.Kd4 Nf4 9.Re5+ Kxg4 =.

**2...Na5+.** If 2...Kf4, then 3.g6 Ke5 4.Kc3 d1Q (4...Nd6 5.Bc6+-) 5.Rxd1 Bxd1 6.g7 wins.

**3.Kc2 Nb3.** 3...d1Q+ 4.Rxd1 Bxd1+ 5.Kxd1 Nc4 6.g6 Ne3+ 7.Ke2 Nxg4 8.Bf3! wins.

**4.Kxb3!** But not 4.Rd5? Kf4 5.g6 Kxe4 6.g7 Kxd5 7.g8Q+... draw.

4.Rd8? Kf4 5.g6 Kxe4 6.g7 Bc4 7.g8Q Bxg8 8.Rxg8 Kf4 draw.

**4...d1Q+ 5.Rxd1 Bxd1+ 6.Kc4!** (6.Bc2? Bxg4! draw)

**6...Kf4.** (6...Bxg4 7.g6 Be6+ 8.Bd5 Bf5 9.g7 Bh7 10.Kc5! win)

**7.g6 Kg5 8.g7 Kh6.**

Now, in comparison with the similar position of the thematic try, the wB is on e4 but not on f5. This is a significant difference  $\Delta$ : Bf5-e4.

**9.Bf3!!** (Foresight effect! That is why 1.Be4+!)

**9...Bc2** (9...Bxf3 10.g8Q! Bd5+ 11.Qxd5! win).

If now 10.g8Q? then 10...Bb3+ 11.Kxb3 stalemate.

If 10.g8N+? then 10...Kg5! 11.Kd4 Bb3! 12.Ne7 Be6 13.Ke5 Bxg4 draw.

**10.g8R!** win.

Awards: <http://www.arves.org/arves/images/PDF-Awards/Dore-80%20JT%202013.pdf>

e-mail: [edeilstudy@mail.ru](mailto:edeilstudy@mail.ru)