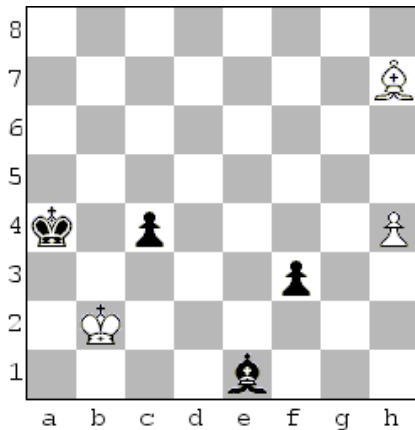


1) 1st prize, Memorial Valois 2015  
award published in EG 200, April 2015



White : Kb2,Bh7,h4

Black : Ka4,Be1,c4,f3

FEN position : 8/7B/8/8/k1p4P/5p2/1K6/4b3 w - - 0 1

White to play and draw (3 +4)

**1.Bc2+!**

Thematic try : 1.Be4? f2 2.Bg2 Kb4 3.Bf1 Kc5 4.h5 Bd2 5.Kc2 Bf4! (5...Bg5? 6.Kc3 Bf6+ 7.Kd2 c3+ 8.Kd3 Kd6 9.h6 Ke6 10.Ke2 and f6 square is not available for Black : 10...Kf7 11.Bg2 Kg6 12.Be4+ =) 6.Kc3 Be5+ 7.Kd2 c3+ 8.Kd3 Kd6 9.h6 Ke6 10.h7 (10.Ke2 Kf6! 11.Bg2 Kf5 -+ ; 10.Be2 Kf6 11.Ke3 Bd4+ 12.Kd3 Kg6 -+ ; 10.Bh3+ Kf6 -+) 10...Kf5! 11.Ke3 Kg4! and with Bf1 instead of Be2, Black cannot play the winning move 11...Kg4.

**1...Kb4 2.Bd1 f2 3.Be2 Kc5 4.h5!**

4.Kc2? Kd4! 5.h5 Bb4(a5) -+

**4...Bd2 5.Kc2 Bf4 6.Kc3!**

6.Bf1? Kd4 7.Be2 c3 8.Bf1 Be5 9.h6 Ke3(4) -+ ; 6.Kd1? c3 7.Kc2 Kd4 -+

**6...Be5+ 7.Kd2! c3+**

Now 7...Kd4 8.Bxc4! Kxc4 9.Ke2 Bd4 10.h6 =

**8.Kd3! Kb4 9.Kc2 Kc5**

9...Bg7 10.Bf1 Kc5 and, eg, 11.h6 Bh8 12.Kd3 Kd5 13.Ke3 Bd4+ 14.Kd3 =

**10.Kd3 Kd5 11.h6!**

11.Ke3? Bd4+ 12.Kd3 Ke5 13.h6 Kf6(5) -+ ; 11.Bf1? Ke6 12.Bh3+ Kf6 -+

**11...Ke6 12.h7!**

12.Bf1? Kf6 13.Ke2 Bd4 14.Bg2 Kg6 15.Be4+ Kxh6 -+ ; 12.Ke3? Bd4+! 13.Kd3 Kf6(7) -+ ;

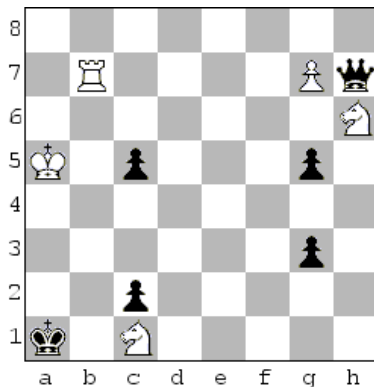
12.Kc2? Kf5 13.Bd3+ Kf4 14.h7 Kg3 -+

**12... Kf5 13.Ke3 Kg5**

With Be2, 13...Kg4 is prevented.

**14.Bd3 c2 15.Kd2 =**

2) 2<sup>nd</sup> prize, Polish Chess Federation Tourney 2013  
Award published on March 17 2014 on website [www.pzsach.pl](http://www.pzsach.pl)



White : Ka5,Rb7,Sc1,Sh6,g7  
Black : Ka1,Qh7,c2,c5,g3,g5

FEN position : 8/1R4Pq/7N/K1p3p1/8/6p1/2p5/k1N5 w - - 0 1

White to play and draw (5+6)

**1.Sf5!**

1.g8=Q? Qxg8 (1...Qxb7? 2.Qxa2 mate) 2.Sxg8 g2 3.Sb3+ Kb2 4.Sd4+ and, eg, 4...Kb3 5.Sxc2+ Kxc2 and g1=Q -+

1.Sb3+? Kb1(2) and, eg, 2.Sxc5+ Ka2 3.Sd3 g2 4.g8=Q+ Qxg8 5.Sxg8 g1=Q 6.Sb4+ Kb3 7.Sxc2+ Kxc2 -+ or 2.Sd4+ Ka2 3.Sxc2 g2 4.g8=Q+ Qxg8 5.Sxg8 g1=Q 6.Re7 Qh2 7.Se3 Qb8 -+

**1...g2**

**2.Se3! g1=Q 3.g8=Q!!**

Now all four white men are *en prise* and Black cannot capture any of them.

**3... Qe1+!**

3...Qxc1 4.Qxh7! (4.Rxh7? Qa3+ 5.Kb5 c1=Q -+) 4...Qd2+ 5.Kb5 Qb4+ 6.Kc6! Qa4+ 7.Kd6 (7.Kd5? c1=Q 8.Ra7 Qd2+ -+) 7...c1=Q 8.Ra7 Qd2+ 9.Sd5 =

**4.Ka6! Qf1+!**

4...Qh6+ 5.Rb6! (not 5.Ka7? Qa5+ and mate in three) 5...Qxb6+ 6.Kxb6 Qxc1 7.Qb3 Qb2 8.Sxc2+ Kb1 9.Na3+ Kc1 =

**5.Ka7!**

Refusal of capturing of Black queen : 5.Sxf1? Qxg8 -+ ; 5.Ka5? Qb5+!! (5...Qe1+? 6.Ka6 Qf1+) 6.Kxb5 (6.Rxb5 Qa7 mate) 6...Qxg8 -+ ; 5.Qc4? Qxc4+ 6.Sxc4 Qh1 -+

**5...Qxb7+!**

5...Qxc1 6.Qxh7 +- (6.Rxh7? Qa3+ +)

**6.Kxb7 Qxc1 7.Qb3!**

7.Sxc2+? Qxc2 -+

**7...Qh1+!**

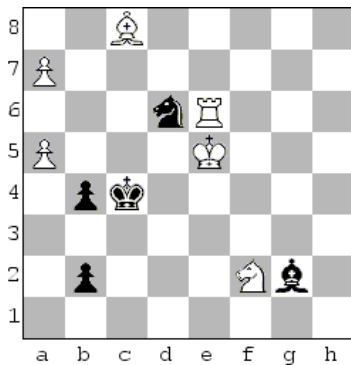
**8.Kb6!**

8.Ka7? (8.Ka6? and, eg, 8...Qa8+ 9.Kb5 Qb7+ 10.Kc4 Qe4+ -+) 8...Qh7+! 9.Kany and 9... c1=Q -+

**8...c1=Q 9.Sc2+ Qxc2**

**10.Qxc2 and White draws :** Black cannot win Q-ending and the pawn ending is also a draw (10...Qb1+ 11.Qxb1 Kxb1 12.Kxc5 g4 13.Kd4 =)

3) **3rd prize Khatyamov MT 2013**  
**Award published in June 2013**



White : Ke5,Re6,Bc8,Sf2,a5,a7  
 Black : Kc4,Bg2,Sd6,b2,b4

FEN position : 2B5/P7/3nR3/P3K3/1pk5/8/1p3Nb1/8 w - - 0 1

White to play and win (6+5)

**1.Ba6+!**

-1.Rxd6? b1=Q 2.Be6+ Kb5! 3.Rd5+ Bxd5 4.Bxd5 Qb2+ 5.Ke6 Qxf2 6.a8=Q Qe2+ = or  
 3.Bd5 Qe1+ 4.Se4 Bxe4 5.Rb6+ and, eg, 5...Ka4 6.Bxe4 Qc3+ 7.Kd5 Qd2+ 8.Kc6 Qe2  
 9.Bd5 Qe8+ 10.Kd6 Qd8+ =

-1.Rg6? b1=Q 2.Ba6+ (2.Rxg2 Qa1+ 3.Kxd6 Qd4+ 4.Kc6 Qd5+ =) 2...Kb3 3.Rxg2 Qf5+  
 4.Kxd6 Qf6+ 5.Kc7 Qxa6 =

**1... Sb5**

**2.Bxb5+**

-2.Se4+? Bxe4 3.Kf4 Ba8 4.Re1 Kc5 5.Rb1 Sxa7 6.Rxb2 Bd5 7.Rc2+ Kd4 8.Rd2+ Kc5 and,  
 eg, 9.Ke3 b3 10.Be2 Bc6 11.Bd3 Bb5 12.Rg2 Kb4 13.a6 Ka5 14.Rg6 b2 15.Bb1 Bxa6 = or  
 9.Bd3 b3 10.Ke3 Sc6 11.a6 Bc4 12.Rd1 Bxd3 =

**2...Kxb5 3.Sd1! b1=Q 4.Sc3+! bxc3 5.Rb6+ Kxa5 6.Rxb1 Ba8**

6...c2 7.Rc1 Kb6 8.Rxc2 +-

**7.Kd6**

7.Kd4? c2 8.Rc1 Ka(b)6= ; 7.Rb8? c2 8.Rc8 Ka(b)6=

**7...Ka4**

7...c2 8.Rc1 Kb6 9.Rxc2 Kxa7 10.Kc7 +- ; 7...Ka6 8.Kc7 +-

**8.Rb8 Bh1 9.Rh8 9.Rb1(?) Ba8 10.Rb8 = loss of time**

**9...Bg2 10.Rg8 10.Rh2(?) Ba8 11.Rh8 Bg2 = loss of time**

**10...Bh1 11.Rg1!**

11.Kc5? c2 12.Rg1 Bb7!! (12...Ba8? 13.Kc4 Ka5 14.Rc1 +- as in main line) 13.Kc4 Ka5  
 14.Rc1 Ka(b)6 15.Rxc2 Kxa7 16.Kb5! and now 16...Ba6+! 17.Ka5 Kb7 18.Rb2+ Ka7  
 19.Rc2 Kb7 positional draw or 17.Kc6 Bd3! 18.Rd2 Be4+! 19.Kc7 Ka6 =

**11...Ba8 12.Kc5 12.Rg8(?) Bh1 13.Rg1 = loss of time**

**12...c2 12...Kb3 13.Kd4 c2 14.Kd3 Kb2 15.Kd2 +-**

**13.Kc4! 13.Kd4? Kb5! 14.Rc1 Ka(b)6 15.Rxc2 Kxa7 16.Ra2+ Kb8! =**

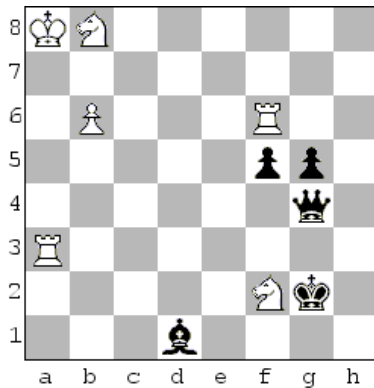
**13...Ka5 14.Rc1 14.Kc5(?) Ka4 15.Kc4 = loss of time**

**14...Ka(b)6 15.Rxc2 Kxa7 16.Kb5! 16.Ra2+? Kb8 =**

**16...Be4 17.Rc7+ Kb8 18.Kb6 +-**

4) 1st-3rd prize UAPA 2014 (thematic section)  
Award published in January 2015

Theme : 'Pin-Selfpin-Unpin (each one should be shown minimum twice)'



White : Ka8,Ra3,Rf6,Sb8,Sf2,b6

Black : Kg2,Qg4,Bd1,f5,g5

FEN position : KN6/8/1P3R2/5pp1/6q1/R7/5Nk1/3b4 w - - 0 1

Black to play, White wins (6+5)

**1...Bf3+**

1...Qb4 2.Rd3 Qe7 (2...Qa5+ 3.Kb7 Ba4 4.Sd1 f4 5.Nc6 +-) 3.Rxf5 Bc2 4.Rd7 Qe6 5.Rxg5+ Kxf2 6.Rd2+ Ke3 7.Rxc2 +-

**2.Rxf3!**

2.Ka7? Qd4 **pin** 3.Rxf5 Qg7+ = ; 2.b7? **selfpin** Bxb7+ 3.Kxb7 Qb4+ = ; 2.Sc6? **selfpin** Qd4 3.Rg6 and, eg, 3...Qd8+ 4.Ka7 Bxc6 5.Rxc6 Qe7+ =

**2...Qxf3+ 3.b7 selfpin**

3.Sc6? **selfpin** (3.Ka7? Qxf2 -+ **pin**) 3...Qc3! (3...Qxf2? 4.b7 see main line) 4.Rxf5 Qxc6+ =

**3...Qxf2 unpin**

3...Kxf2 4.Sc6! **unpin** Qa3+ 5.Sa7 **selfpin** Qf3 **pin** (and **unpin** of Sa7) 6.Rc6 **unpin** +-

**4.Sc6!**

4.Sa6? Qf3 **pin** 5.Ka7 **unpin** Qe3+ 6.Ka8 Qe4(f3) **pin** =

**4...Qa2+ 5.Sa7 selfpin**

5.Kb8? Qg8+ =

**5...Qd5 pin** (and **unpin** of Sa7) **6.Rc6! unpin**

6.Sc6(?) **unpin** Qa2+ 7.Sa7 **selfpin** Qd5 8.Rc6! **unpin** = loss of time.

**6...f4 7.b8=Q**

Promotion on b8 creates a **pin** of Rc6.

**7...f3 8.Qb7!! unpin**

8.Qc8? (8.Qb2+? f2 =) 8...f2 9.Qg4+ Kh2 =

**8...f2 9.Sb5**

9... g4 10.Sd4 g3 and, eg, 11.Sb3 Qh5 12.Sd2 +-

**9...Qe4 10.Sd4**

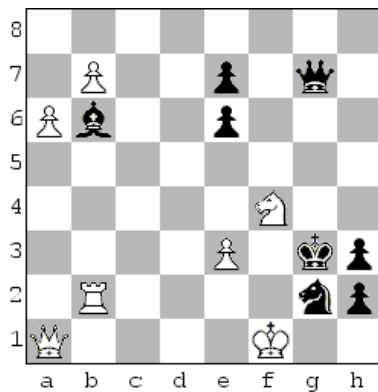
10.Sc3? Qf3=

**10...g4 11.Sb3! Qf3**

11...f1=Q 12.Rc2+ +-

**12.Sd2 +-**

5) 3rd Prize, Valois MT 2015  
Award published in EG 200, April 2015.



White : Kf1,Qa1,Rb2,Sf4,a6,b7,e3  
Black : Kg3,Qg7,Bb6,Sg2,e6,e7,h2,h3

FEN : 8/1P2p1q1/Pb2p3/8/5N2/4P1kp/1R4np/Q4K2 w - - 0 1

White to play and win (7+ 8)

**1.Se2+**

1.Sh5+? Kh4 -+; 1.b8=Q? h1=Q + -+

**1...Kf3! 2.Sg1+! hxc1=Q+**

**3.Kxg1**

H-pawn has been annihilated but now White king is threatened by a battery.

**3...Sxe3+ 4.Kh1! Qg2+! 5.Rxg2 hxc2+ 6.Kh2 Ba7**

6...Sf1+ 7.Kh3 g1=Q 8.Qd1+ Ke3 9.b8=Q Qh1+ 10.Kg4 Sh2+ 11.Kg3! Sf1+ (11...Qxd1 12.Qxb6+ and 13.Qd8+ +-) 12.Qxf1 Qxf1 13.Qxb6+ Ke4 14.Qxe6+ and 15.a7 +-

**7.b8=Q!!**

7.Qa3(c3)? Kf2! 8.Qb2+ Kf1 (8...Kf3? 9.b8=Q +-) 9.Qa1+ Kf2 10.Qg1+ Kf3 11.Kh3 e5 =

7.Qg1? Sg4+ 8.Kh3 Bxc1 9.b8=Q Sf2+ 10.Kh4 Se4 11.Qf8+ Sf6 12.Kh3 Be3 13.a7 and, eg, 13...g1=Q 14.a8=Q+ Kf2 15.Qa2+ Kf3 =

**7...Bxb8+**

7...Sg4+ 8.Kh3 Sf2+ (8...Bxb8 9.Qd1+ +-) 9.Kh4 Bxb8 10.Qc(a)3+ and, eg, 10...Ke2 11.Qb2+ Kf3 12.Qb7+ Ne4 13.Qb3 Ke2 14.Qc4+ Kf3 15.Qd3+ Kf2 16.Qd4 Kf1 17.Qa1+ and 18.a7 +-

**8.Kg1! Ba7 9.Qa3!**

9.Qc3? e5 =

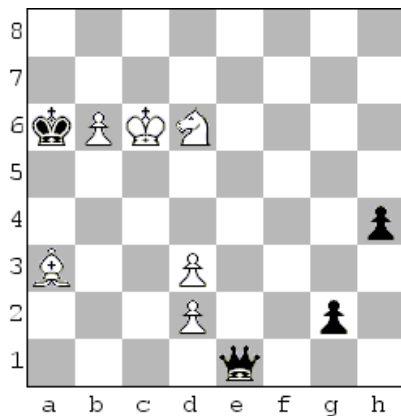
**9...Kg3 10.Qxe7**

10.Qc3(?) Kf3 11.Qa3 (or 11.Qd3 Kg3 11.Qc3 Kf3 12.Qa3) = loss of time.

**10...Bd4**

**11.Qa3!** and White wins, eg 11...Ba7 12.Qd6+ Kf3 13.Qd3 Bc5 14.Qb3 Bd4 15.a7 Bxa7 16.Qb7+ but not 11.Qd6+? e5 12.Qa3 Ba7 13.Qc3 Bd4 14.Qxd4 exd4 15.a7 d3 16.a8=Q d2 =

6) sp. Commendation, Topko JT-75 2015 Award published in March 2015



W : Kc6,Ba3,Sd6,b6,d2,d3

B : Ka6,Qe1,g2,h4

FEN position : 8/8/kPKN4/8/8/B2P3p/3P2p1/4q3 w - - 0 1

White to play and draw (6 + 4)

**1.b7 Qb1**

1...g1=Q 2.b8=Q Qg2+ 3.Se4 Qxe4+ 4.dxe4 Qxe4+ =

**2.Bc5 h3 3.Bg1!**

3.Kc7? h2 -+

**3...Qc2+ 4.Sc4!**

4.Kd7? h2 5.Bxh2 Ka7 6.Bg1+ Kb8 -+

**4...Qb3 5.Sd6**

5.Bb6? Qb5+ ! (5...Qxb6+? 6.Sxb6+-) 6.Kc7 Qxb6+ -+ ; 5.Sb6? Qb5+ 6.Kc7 Qe5+ -+

**5...Qb1 6.Bh2!**

6.Kc7? Qxg1 7.b8=Q Qa7+ -+ ; 6.d4? Qc1(2)+ 7.Kd7 Ka7 -+

**6... Qb6+ 7.Kd7!**

7.Kd5? Qc7! -+ eg 8.Bg1 Ka5 9.Ke6 Qd8 10.Kd5 h2 -+

**7...Qb4 8.Kc6!**

8.Kc7? Qc5+ 9.Kd7 Qb6 10.d4 Qb3 -+; 8.d4? Qa4+ 9.Ke7 Qb3+ -+; 8.Bg1? h2 9.Bxh2 Ka7 -+

**8...Qa4+ 9.Kc7**

9.Kc5? Qc2+ -+ ; 9.Kd5? Ka7 -+

**9...Qa5+ 10.Kc6!**

10.Kd7? Qb6 zz (wtm) 11.d4 and, eg, 11...Qb3 11.d3 Ka7 12.Kc8 g1=Q 13.Bxg1 h2 14.Bxh2 Qc2+ -+

**10...Qb6+**

10...Qb4 11.Bg1! (11.Kd7? Qb6 zz -+) 11...Qb1 (11...Qa4+ 12.Kc7 Qc2+ 13.Sc4=) 12.Bh2 (12.d4? Qc1+ =) 12...Qb6+ etc ; 10...Qd8 11.Bg1 Qb8 and, eg, 12.Bh2 =

**11.Kd7 zz (btm) Qb1**

11...Qb4 12.Kc6 Qa4+ 13.Kc7 Qa5+ 14.Kc6 =

**12.Kc6**

12.Kc7? Qc1+ 13.Sc4 g1=Q -+

**12...Qc2+ 13.Sc4 Qb3 14.Nd6 Qb1 15.Bg1! positional draw**

15.Kc7? Qc1+ 16.Sc4 g1=Q -+ ; 15.Kd7? Qb6 zz -+

