

With the black Rook on f1, f2 or f4, it would be a draw : this is the very known Szen position. But incredibly this is lost. As we know, there is an exception in Szen, when the defensive Rook is on the Knight file. Now, there is another, when the defensive Rook is on the 3rd rank. The present study is a theoretical novelty.

1.Kg5!! The only winning move seems to abandon the mate threat ! But this is only temporary. This idea already was in Von der Lasa !

1...Kh8 What is new is that the redeployment of the BR in the 6th rank (to obtain a Centurini defence) will not be possible.

[1...Rc3 2.Be4!! Kf8 (2...Rd3 impossible; 2...Rb3 impossible; 2...Rc8 3.Kf6! Rf8+ 4.Kg6! Rc8 5.Bd5+! Kf8 6.Be6 Rc2 7.Kf6 Rf2+ 8.Bf5 Lolli) 3.Kf6! Ke8 (3...Rc6+ impossible) 4.Ke6! Kf8 (4...Kd8 5.Kd6!) 5.Rf7+! Ke8 (5...Kg8 6.Kf6!) 6.Bd5! Rc1 7.Kd6! Re1 8.Rf2 Kd8 9.Rf8+ Re8 10.Rf7 Philidor;

1...Rb3 2.Bf7+!;

1...Rg3+ 2.Kf6! Rf3+ 3.Bf5!;

1...Kf8 2.Bf5! Ke8 3.Kf6! (no ...Rd3) 3...Kd8 4.Rd7+;

1...Rd3 2.Bxd3;

1...Rf8 2.Re7!! (2.Rc7? Rd8!!) 2...Ra8 (2...Rd8 3.Bf5 Rd6 4.Be6+!) 3.Bf5! Rb8 (3...Kh8 4.Be6 Ra7 5.Re8+ Kh7 6.Kf6 Kh6 7.Rg8 is Lolli after a quarter turn) 4.Be6+ Kf8 5.Kf6! Rb1 6.Rh7 Rf1+ 7.Bf5! Lolli;

1...Rf2 2.Bf5! Kf8 3.Kf6! Re2 4.Rb7 Lolli]

2.Bf5!! [2.Rb7?! Rf2 3.Bf5! Rg2+ 4.Kf6! Rg7 5.Rb8+! waste of time]

2...Rg3+ 3.Kf6! Rg7 [3...Rg1?! 4.Ra4! Rg2 5.Rh4+]

4.Ra8+! [4.Ra1? Rf7+! 5.Ke5 Kg7! 6.Be6 Rf2=]

4...Rg8 5.Ra6!! [5.Ra1?! Rf8+ 6.Kg6! Rg8+ 7.Kh6! (7.Kf7? Rg7+! 8.Kf6 Rf7+!) 7...Rg7 8.Ra8+! Rg8 9.Ra6! waste of time]

5...Rf8+ [5...Re8 6.Be6! Kh7 (6...Rf8+ 7.Kg6) 7.Ra5;

5...Rg1 6.Ra4! Rg4 7.Bxg4]

6.Kg6! Rg8+ 7.Kh6! Rf8! [7...Rb8 8.Be6!! Rf8 (8...Rd8 9.Ra7) 9.Kg6! Re8 10.Rb6 Z 10...Rf8 (10...Ra8 11.Rb7) 11.Rb1! (11.Rb7? Rf6+!);

7...Rg7 8.Bg6! Rh7+ 9.Kg5! Rc7 (9...Rh1 10.Kf6! Rf1+ 11.Bf5! Rg1 12.Ra4) 10.Kf6! Rc8 11.Bf7! Kh7 12.Ra4 Rc6+ 13.Be6!;

7...Rg1 8.Bg6! Rh1+ 9.Kg5 Kg7 10.Ra7+! Kf8 11.Kf6! Rf1+ 12.Bf5!]

8.Rd6!! Zugzwang. The only good square : the square c6 is reserved for the Bishop and we must not intercept the a2-g8 diagonal. This win was missed in the game Ljubojevic-De la Villa 1996.

[8.Be4?! Rb8 9.Rf6! Rg8 10.Rd6! Rf8 11.Bf3! waste of time;

8.Bg4?! Rg8! 9.Bh5?! Rb8 is premature : Von der Lasa wants the BR at the bottom of the board, see 12th move;

8.Be6? Rf6+!;

8.Kg5? Kg7! 9.Ra7+ Rf7!;

8.Bg6? Kg8! 9.Kg5 Rf1!;

8.Rc6?! Rg8 9.Be4 (9.Be6? Rg6+!) 9...Rf8 (9...Rb8 10.Bd5? Rb6!) 10.Bf3 Rd8 11.Rf6! (11.Bd5? Rd6+!) 11...Rg8

12.Rd6! (12.Bd5? Rg6+!) 12...Rf8 13.Bg2 Rg8 14.Be4! Rf8 15.Bf3!! main line;

8.Re6?! Rg8 9.Be4 Rf8 10.Bf3? Kg8! 11.Bd5 (compare to the main line) Kf7!!;

8.Rg6? Rxf5;

8.Rb6?! Rg8! 9.Be4 Rf8 10.Bf3 Rg8 11.Rb4?! Rd8! 12.Rb6! (12.Kg6? Rd6+! 13.Kf7 Rd7+!);

8.Kg6?! Rg8+! 9.Kf7? Rg7+! 10.Kf6 Rf7+!]

8...Rg8! [8...Ra8 9.Be6! Rf8 10.Kg6!;

8...Kg8 9.Be6+! Kh8 10.Kg6! idem]

9.Be4!! Zugzwang.

9...Rf8 [9...Rg1?! 10.Bg6! main line;

9...Rb8?! 10.Bd5! Rb6 11.Bc6!! : see 10...Rb8;

9...Rg7 10.Bg6! Rh7+ 11.Kg5! Ra7 12.Kf6! Ra8 13.Bf7! Kh7 14.Rd4 Ra6+ 15.Be6]

10.Bf3!! Zugzwang. Transposing in a famous and difficult Crosskill study. This was already given by... Troitzky in 1914, but the following was wrong !

[10.Bh1?! (the Bishop must intervene in g4) 10...Rg8! 11.Be4 Rf8 12.Bf3!;

10.Bg2?! Rg8! 11.Rd2? Rxg2!]

10...Rg8! [10...Rb8 11.Bd5!! Rb6! 12.Bc6! (the WR must be in d6 and keep c6 for the B) 12...Kg8 (12...Rb8 13.Rd7!)

13.Kg6! Rb8 (13...Kf8 14.Kf6!) 14.Rd7! Rc8 15.Rg7+! Kh8 16.Rh7+! Kg8 17.Bd5+;

10...Re8 11.Bd5! Rb8 (11...Re6+ 12.Rxe6!) 12.Kg6 Rb6 13.Bc6! Rb8 14.Kf7;

10...Kg8 11.Bd5+! Kh8 12.Kg6! Rb8 (12...Rc8 13.Rd7) 13.Kf7]

11.Rd4!! Zugzwang (the 4th in a row). The plan is to force the BR to go down to transpose into Von der Lasa, as we prepare to play Kg6 if it remains on the 8th rank. The d4 (or d2) square is chosen to avoid the stalemate tricks. And d5 allow a later ...Rb7+.

[11.Rd3?! Rg3! 12.Rd8+;

11.Rd1?! Rg1! 12.Rd8+;

11.Rd2!! (is the same) Rg1 (11...Re8 12.Kg6! Kg8 13.Bg4!) 12.Bh5! Rg2! 13. Rd6!! : see the main line;

11.Bd5? Rg6+!;

11.Bh5?! Ra8 12.Bf3!;

11.Rd5?! Rb8! 12.Rd6! (12.Kg6? Rb6+! 13.Kf7 Rb7+!);

11.Rd7?! Rg7 12.Rd8+!]

11...Rg1 [11...Rg7 12.Bh5!! Rh7+?! (12...Rg1! 13.Rd6!! main line) 13.Kg6! Rg7+ 14.Kf6! Rg1 15.Bg4!;

11...Re8 (the main line for Crosskill) 12.Kg6! (threat Rh4+ et Bd5+, which would be refuted by ...Rd8 if the WR had not chosen the good file) 12...Kg8 (12...Re6+ 13.Kf7!; 12...Rg8+ 13.Kf7! Rg7+ 14.Kf6! (for this the WR must not be in d6) 14...Kh7 15.Rh4+! Kg8 16.Bd5+!; 12...Rc8 13.Rh4+ Kg8 14.Bd5+ Kf8 15.Rh8+) 13.Bg4!! Kf8 (13...Kh8 14.Kf7! Rg8! 15.Bf3! Rg7+ 16.Kf6!; 13...Rb8 14.Be6+! Kf8 15.Kf6! Ke8 16.Bf7+! Kf8 17.Rg4 Rb6+ 18.Be6!) 14.Kf6! Re7 15.Rd8+! Re8 16.Rd7! Re4 (16...Rb8 17.Rh7! Kg8 18.Rg7+! Kh8 19.Be6!! Rf8+ 20.Bf7! Rb8 21.Rg4; 16...Kg8 17.Be6+) 17.Rc7! Re1 18.Rh7! Rf1+ (18...Kg8 19.Rh2) 19.Bf5! Rg1 20.Bh3! main line;

11...Rb8 12.Kg6! Kg8 (12...Rb6+ 13.Kf7!) 13.Bc6! (13.Bd5+? Kf8!) 13...Rc8 14.Bd7!! Rc2 (14...Ra8 15.Be6+! Kf8 16.Kf6! Ke8 17.Rh4) 15.Re4! Rg2+ 16.Kf6! Rf2+ 17.Bf5! Kf8 18.Rh4! Rg2 19.Rh7! Rg1 20.Bh3! is the same;

11...Rg4 12.Bxg4!]

12.Bh5!! Rg2 [12...Rg8?! 13.Bf7!! Rb8 (13...Rf8 14.Kg6) 14.Be6!! Re8 15.Rd6! Rf8 16.Kg6! Re8 17.Rc6 Z 17...Rf8 18.Rc5;

12...Rg7 13.Rd6! Rg8?! 14.Bf7!]

13.Rd6!! Come back on the old good square, preparing the transfert of BK.

[13.Rc4?! Rg1 14.Rc6!;

13.Bg6?! Rh2+ 14.Kg5?! Ra2! (we are not ready for Kf6) 15.Rd6? Kg7! 16.Rd7+ Kf8! 17.Kf6 Ra6+!]

13...Rg1 Von der Lasa. [13...Rg8 14.Bf7! Rf8 15.Kg6! Ra8 16.Be6;

13...Rg7 14.Bg6 Rh7+ 15.Kg5!]

14.Bg6! Rh1+ 15.Kg5! Rf1 [15...Kg7 16.Rd7+! Kf8 17.Kf6! Rf1+ 18.Bf5! is the same;

15...Ra1 16.Kf6! Ra8 17.Bf7! Kh7 18.Rd4! Ra6+ 19.Be6!]

16.Bf5! Kg7 17.Rd7+! Kf8 18.Kf6! Re1 [18...Ke8 19.Rd2! Rf4 (19...Rf3 20.Rc2) 20.Re2+! (20.Rh2!) 20...Kd8 (20...Kf8 21.Rc2) 21.Rc2]

19.Rh7! Rg1 20.Bh3!! Lolli.

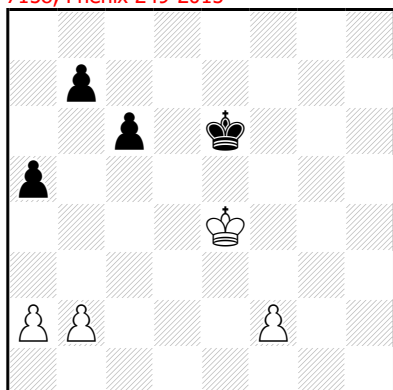
20...Rg3 21.Be6! Rf3+ 22.Bf5! Rg3 23.Rf7+! Kg8 [23...Ke8 24.Rc7]

24.Rd7! Kh8 25.Rd4! Rg7 [25...Rg1 26.Rh4+! Kg8 27.Be6+]

26.Rh4+! [26.Bg6! Rf7+ 27.Bxf7!]

26...Kg8 27.Be6+! 1-0

Study #2 - Alain VILLENEUVE
marquisfi@wanadoo.fr
7158, Phénix 249-2015



+ (4+4)

1.a4! [1.f4? a4!; 1.Kd4? b6! 2.a4 Kf5!]

1...b5 [1...Kf6 2.Kd4 (or 2.f4) 2...b6 3.Ke4! Ke6 4.f4!

1...b6 2.f4! b5 3.axb5 cxb5 4.f5+! Kd6 5.f6! Ke6 6.Kd4!

1...Kd6 2.Kd4! b6 3.f4!]

2.Kd4! [2.f4? bxa4=]

2...bxa4

[2...Kd6 3.b4!! c5+ (3...axb4 4.a5 c5+ 5.Kd3 c4+ 6.Kc2) 4.bxc5+ Kc6 5.axb5+ Kxb5 6.Kd5! a4 7.c6 followed soon by Qb7-a7+]

3.Kc5! Kd7 4.f3!!

[4.f4? Kc7! ZZ 5.f5 Kd7! 6.Kb6 (6.f6 Ke6=) 6...Kd6! 7.Kxa5 Ke5! 8.Kxa4 Kxf5=;

4.Kb6? a3! (or first ...Kd6 and then ...a3!) 5.bxa3 Kd6! 6.Kxa5 Kd5!! 7.f4 c5 8.f5 c4 9.Kb4 Kd4 10.f6 c3 11.f7 c2 12.f8Q c1Q 13.Qd6+ Ke4! 14.a4 Qb2+]

4...Kc7 5.f4! ZZ 5...Kd7 [5...Kb7 6.Kd6]

6.Kb6! The idea of zugzwang with f2-f3!! is not to play f5 in the formation Kc5/Kd7 because there, ...Kc7 still draws. It is to play Kb6 with the pawn still in f4, because after ...Kd6 White can take a5 at a moment when Black cannot attack the "f" pawn in 1 move (like it would be if the pawn were in f5).

[6.f5? Kc7! 7.f6 Kd7 8.f7 Ke7! 9.Kxc6 Kxf7 10.Kb5 a3! 11.bxa3 Ke7 12.Kxa5 Kd7 13.Kb6 Kc8!]=]

6...Kd6 7.Kxa5 Compared to the line 4 f4?, the BK is further from the "f" pawn.

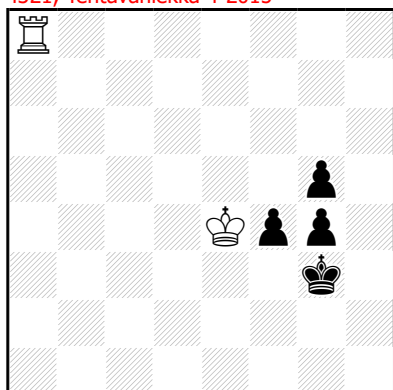
7...a3 [7...Kd5 8.Kxa4 Ke4 9.Kb4 Kxf4 10.Kc5!]

8.bxa3 Kd5 White is one tempo ahead than in the line 4 Kb6? for the advance of the "f" pawn.

9.f5 c5 10.f6

Synthesis of two opposite ideas, frequent in pawn endings : one is violent (the break 2...Kd6 3 b4!!) and the other is quiet (the festina lente 4 f3!! based on a ZZ). **1-0**

Study #3 - Alain VILLENEUVE
marquisfi@wanadoo.fr
4321, Tehtävänäiekka 4-2015



+ (2+4)

1.Ra2!! Black was threatening ...Kf2-f1 and, if White does not take the perpetual check, ...g3 with the idea Kf3, ...g4+.

[1.Ra5? Kf2! 2.Rxg5 g3! =;

1.Rg8? f3! 2.Rxg5 f2! 3.Rf5 Kg2! =;

1.Ra3+? Kg2 2.Ra2+ Kh1! 3.Rb2 g3 4.Kf3 g4+!]

1...Kh3 [1...f3 2.Ke3! Kh3 3.Ra4! : see later 4...Kh3;

1...Kh4 2.Ra5! Kh5 3.Ra8! : see later 2...Kh4]

2.Ra5!! The threat was simply ...g3.

[2.Rb2? g3! 3.Kf3 g4+!]

2...f3 [2...Kh4 3.Rb5! Kh5 (3...g3 4.Kf3 g4+ 5.Kxf4 g2 6.Rb8!!) 4.Rb8! Kh4 5.Rg8! Kh5 6.Rh8+! Kg6 7.Ke5! Kg7 (7...f3 8.Ke4!) 8.Rh5 Kg6 9.Rh1! f3 10.Ke4+-;

2...g3 3.Rxg5 Kh2 4.Kf3+-]

3.Ke3! Kg2 [3...g3 4.Kxf3 g4+ 4.Kf4 Kh2 5.Rh5+ Kg2 6.Kxg4]

4.Ra2+! [4.Rxg5? g3! 5.Rf5 (5.Kf4 f2! 6.Rxg3+ Kh2=) 5...f2! 6.Ke2 Kg1=]

4...Kg1 [4...Kh3 5.Ra4!! (5.Kf2? g3+! 6.Kxf3 g4+!) 5...Kg3 (5...Kh4 6.Kf2!) 6.Rb4! Kh3 (6...f2 7.Ke2!) 7.Kf2! g3+ 8.Kxf3;

4...Kf1 5.Rb2 Z (5.Ra4? f2! 6.Rxg4 Ke1 7.Ra4 f1N+!) 5...Kg1 6.Rb4! : main line]

5.Ra4!! Third floor of the file to be visited. [5.Rb2?! Kf1! 6.Rc2 Kg1 7.Rc4!]

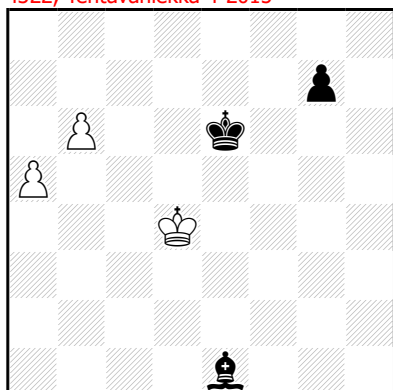
5...Kf1 6.Rxg4! f2 7.Kf3! Ke1 8.Re4+! And the 3rd square of the rank...

8...Kf1 9.Ra4! Kg1 [9...Ke1 10.Ra1+]

10.Rg4+! Kf1 11.Rg2!

Swallow (Schwalbe, hirondelle) a8-a2-a5-a2-a4 and then a4-g4-e4-a4-g4. **1-0**

Study #4 - Alain VILLENEUVE
marquisfi@wanadoo.fr
4322, Tehtävänäiekka 4-2015



= (3+3)

1.b7! [1.a6? Bf2+!; 1.Kc5? Bxa5!]

1...Bg3 [1...Bf2+ 2.Kc4! Ba7 (2...Bg3 3.a6! Bb8 4.Kc5) 3.Kb5! Kd7 (3...g5 4.Ka6!) 4.Ka6! Bb8 5.Kb6! Bc7+ 6.Ka7! Kc6 7.b8Q (7.a6? Kb5!) 7...Bxb8+ 8.Kxb8 Kb5! 9.Kb7!! Kxa5 10.Kc6!= "à la Reti"]

2.Kc5! [2.Kc4? Kd7! 3.a6 Kc6!;
2.a6? Bf2+! 3.Kc4 Ba7! : the WK has no more the square a6]

2...Kd7 3.a6! This would be lost with the BB in h2. [3.Kd5? Bd6! (3...Bc7! 4.Kc5 Bh2!!) 4.a6 Bb8! : see further]

3...Bf2+ Now, the white pawns cannot move anymore. Only the white King must play, but he will do it brilliantly. [3...Bh2 4.Kd4!! (4.Kd5? Bb8! 5.Kc5 Kc7!) 4...Kc7 (4...Bb8 5.Kd5! : main line) 5.Ke4! Kb6 6.Kf5! Kxa6 7.Kg6!; 3...Kc7 4.Kd5! Kb6 (4...g5 5.Ke4! followed by Kf5!) 5.Ke6! Kxa6 6.Kf7!= : the BB blocks his pawn]

4.Kd5! [4.Kc4? Ba7! 5.Kd5 Bb8!! ZZ]

4...Ba7 5.Ke5! Bb8+ [5...Ke7 6.Kd5!]

6.Kd5!! ZZ and switchback on d5. [6.Kf5? Ke7 7.Kg6 Kf8!]

6...Kc7 [6...g6 7.Kc5! Kc7 8.Kd5! Kb6 9.Ke6! using the weakening g7-g6
6...g5 7.Ke4! Ke6 (7...g4 8 a7) 8.Kd4!! Ba7+ (8...g4 9.Ke4! or 8...Kf5 9.Kc5! g4 10.Kb6!) 9.Ke4! Kf6 10.Kd5! g4
11.Kc6 g3 12.b8Q Bxb8 13.Kb7 g2 14.Kxb8 g1Q 15.a7=]

7.Ke5!! It is not a ZZ because Kf5! if white to move. But it is another switchback. [7.Ke6? Kd8!! (7...Kb6? 8.Kf5!) 8.Kf5 Ke7! 9.Kg6 Kf8 10.Kf5 Kf7 11.Ke4 Ke6!; 7.Ke4? Kd6! 8.Kf5 Ke7!
7.Kc5? g5!]

7...Kd8+ Where do you play your King ?

8.Kd4!! ZZ and 3rd switchback, this time on the departure square.

[8.Ke6? Ke8!;
8.Kd5? Kd7! (this ZZ once again) 9.Kc5 (9.Ke4 Ke6!) 9...Kc7! 10.Kd5 Kb6!;
8.Kf5? Ke7!; 8.Ke4? Ke7!]

8...Ke7 [8...Kd7 9.Kd5!]

9.Kc5! 4th switchback.

9...Ba7+ 10.Kc6 Or 10 Kd5.

The 4 switchbacks are on the "table" d4-c5-d5-e5. ½-½