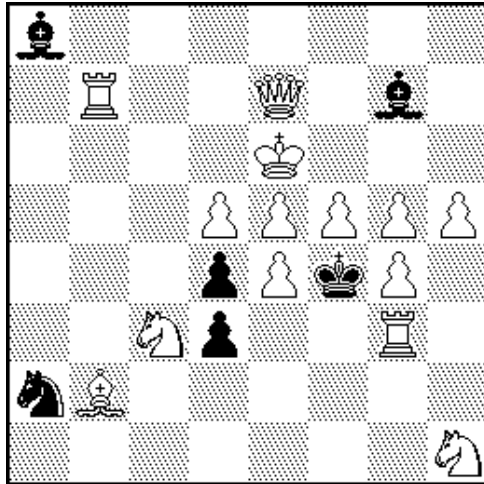


1. Zoran Gavrilovski

4th Pr. FIDE World Cup 2013



#4^v

14+6 (C+)

1.Rb3? (2.Se2+ **A** d:e2 3.Rbf3+ K:e4 4.Sf2#)

1...S:c3 2.Bc1+ **B** d2 3.B:d2+ K:e4 4.Sf2#

1...d:c3! **x**

1.Qa3!! (2.Bc1+ **B** S:c1 3.Q:c1+ d2 4.Q:d2#)

1...d:c3 **x** 2.Qa7! (3.Qe3#) [2.Qc5? K:g5! 3.R:g7+ Kh6!]

2...K:g5 3.R:g7+ Kh4/Kh6/Kf4 4.Qe7# **C**/Rg6#/Qe3#

1...d2 2.Se2+ **A** K:g5 3.Qe7+ **C** Kh6/Bf6 4.Q:g7#/Q:f6#

1...K:g5 2.Qe7+ **C** Kf4/Bf6 3.Qh4/Q:f6+ ~/Kf4 4.g5/Qh6#

[1...S:c3 2.Bc1+ d2 3.B:d2+ K:e4 4.Sf2#]

ORIGINAL combination of:

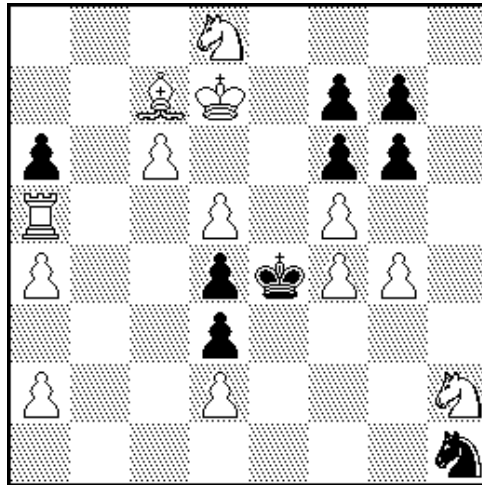
1. **strategic** themes and other chess problem elements
 - **Rehm** theme after 1...d:c3, with the thematic repositioning of the white Queen on the other side of wRb7 on the 7th rank and play by both pieces on this line in **Bristol** fashion,
 - more **clearances of wQ** lines in the threat (a3-c1 line) and after 1...K:g5 (e7-h4 line),
 - triangle **round-trip** (*rundlauf*) by bQ,
 - **Klasinc** theme, with switchback of wQ to e7 after letting the wR to pass across that square,
 - more **switchbacks** by wQ to e7 at the 3rd move after 1...d2 and at the 2nd move after 1...K:g5,
 - **6 mates by wQ** throughout the play; and
2. **formal** themes
 - **Pseudo le Grand** exchange of threat & actual 2nd move between the try 1.Rb3? (2.**A**), 1...S:c3 2.**B** and the solution 1.Qa3!! (2.**B**), 1...d2 2.**A**,
 - **Dombrovskis paradox** between the try 1.Rb3? (2.**A**) **x!** and the solution 1.Qa3!!, 1...**x** 2.Qa7, 1...d2 2.**A**,
 - triple appearance of Qe7 as W2, W3 and W4 move.

E-mail of Zoran Gavrilovski: mprobl@yahoo.com

2. Zoran Gavrilovski

The Macedonian Problemist 2015

(issue 47, May – August 2015)



#5^{vv}

13+9 (C+)

1.f:g6? (zugzwang) S~!

1...f:g6? 2.Ke6/Sb7 ~ 3.Sb7/Ke6 ~ 4.Sc5#

1...f5? 2.S:f7 ~ 3.Sg5#

1.S:f7? (zugzwang) g:f5!

1...S~ 2.Sd6+ K:f4 3.S:f7+ Ke4 4.B(:)g3! ~ 5.Sd6#

1...g5? 2.f:g5 g6/S~ 3.g:f6/Bg3 ~ 4.Sg5#/Sd6#

1.Sb7! (zugzwang)

1...S~ 2.Sd6+ K:f4 3.S:f7+ Ke4 4.B(:)g3! ~ 5.Sd6#

1...g:f5 2.Sc5+ K:d5 3.S:a6+ Ke4 4.R:f5! ~ 5.Sc5#

1...g5 2.Kd6! (3.Kc5) K:f4 3.Kc5+ Ke4 4.Kc4! ~ 5.Sc5#

STRATEGIC problem showing:

1. battery play with

- creation of 3 different batteries by arrival of wS on d6 after 1...S~ or on c5 after 1...g:f5, and by arrival of wK on d6 after 1...g5,
- subsequent delayed *Siers* battery play on a diagonal or orthogonal line after 1...S~ or 1...g:f5;

2. *Klasinc* theme

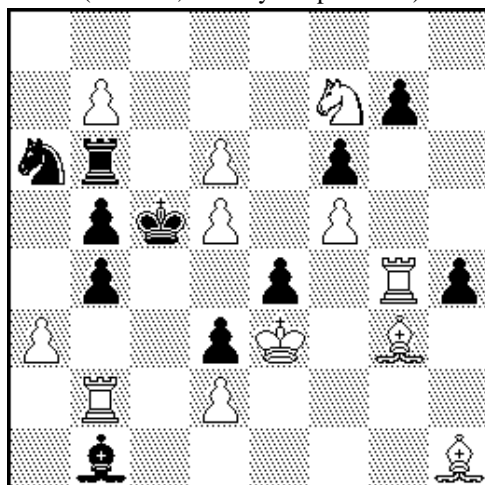
- the wS vacates at W3 move the square d6 after 1...S~ or the square c5 after 1...g:f5,
- a white line piece (wB or wR) passes across this square by a quiet W4 move, and
- the wS returns to d6 or c5.

E-mail of Zoran Gavrilovski: mprobl@yahoo.com

3. Zoran Gavrilovski

The Macedonian Problemist 2014

(issue 43, January – April 2014)



#4^v

12+11 (C+)

1. *K:e4?* **A** (2. *Bf2+* **B** *Kc4* 3. *Se5+* **C** *f:e5* 4. *K:e5#* **D**)

1... *Kc4* 2. *Se5+* **C** *f:e5* 3. *K:e5+* **D** *Kc5* 4. *Bf2#* **B**

2... *Kc5* 3. *Sd7+* *Kc4* 4. *Ke3#*

1... *h:g3!*

1.Bf2! **B** (2. *K:e4+* **A** *Kc4* 3. *Se5+* *f:e5* 4. *K:e5#*)

1... *Kc4* 2. *R:e4+* *Kc5* 3. *Kf4+* **E** *K:d5* 4. *Re:b4#* **F**

2... *K:d5* 3. *Re:b4+* **F** *Kc5* 4. *Kf4#* **E**

1... *K:d5* 2. *B:e4+* *Kc5* 3. *Kf3+* *Kc4* 4. *Bc6#*

2... *Kc4* 3. *Kf3* ~/*Sc5/R:d6* 4. *Bc6#/R:b4#/S:d6#*

UNUSUAL combination of

1. **strategic** themes and other chess problem elements:

- **battery creation** on e4 at W2 move (3 times),
- **battery mates** (4: of which 2 by wK, 1 by wB and 1 by wR),

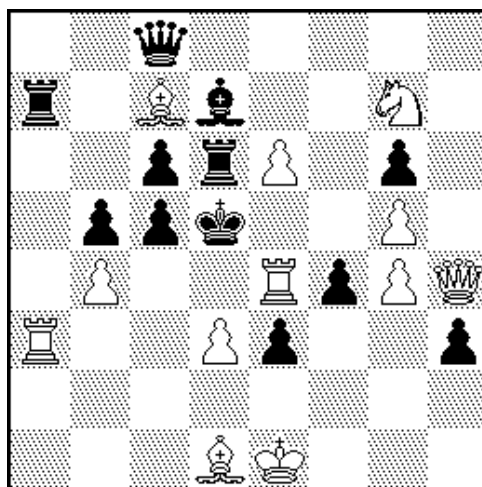
2. **formal** themes

- **reversal** in two phases 1.**A?** ~ **B**; 1.**B!** (battery creation) ~ 2.**A**,
- **BCD-CDB** cycle in the try,
- **EF-FE** exchange of W3 and W4 moves in the solution.

E-mail of Zoran Gavrilovski: mprobl@yahoo.com

4. Zoran Gavrilovski

13th-15th Pl. 9th WCCT 2012-13



#4

12+12 (C+)

1.Bf3! (2.Rc4+ Ke5 3.d4+ c:d4 4.Rc5#)

1...R:c7 2.R:e3+ Kd4 3.Qf2! ~ 4.Re2#,

3...R:e6 4.R:e6#, 3...f:e3 4.Qb2#

1...Q:c7 2.R:f4+ Ke5 3.Qg3! ~ 4.Rc4#,

3...Rd4 4.Rf5#

1...B:e6 2.R:e6+ Kd4 3.R:d6+ Ke5 4.Rd5#

INTENSIVE battery play in four thematic variations with:

- **Delayed Siers battery play** (3 times the 9th WCCT theme), and
- **Siers battery play** (once).

The thematic rendering is:

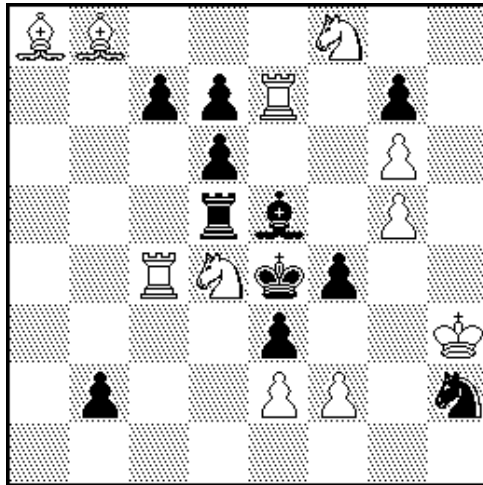
- bit *paradoxical*, because of quiet W3 moves setting up different batteries,
- *emphasized* by pair of thematic mates after 1...R:c7 and 1...Q:c7,
- *unified* by the said black defences on c7, which unpin the bRd6 (not pinned yet in the diagram position), and
- *supplemented* by a white rook's cross.

Judging country Belarusia: "Quiet moves by the Queen decorate the problem."

E-mail of Zoran Gavrilovski: mprobl@yahoo.com

5. Zoran Gavrilovski

16th-21st Pl. 9th WCCT 2012-13



#4^v

11+11 (C+)

1.Sh7? (2.Sf3+ ♠ Kf5 2.Sh4#) e:f2! x

1.Kh4! (2.Sde6+ Kf5 3.R:f4+ B:f4 4.S:g7#)

1...c6 2.S:c6+ Kf5 3.R:e5+ d:e5/R:e5 4.Se7#/Sd4#

2...R:d4 3.S:d4+ d5 4.R:e5#

1...e:f2 x 2.Sc2+ Kf5 3.e4+ f:e3 e.p. 4.S:e3#

1...Sf3+ 2.S:f3+ ♠ Kf5 3.Kh5 ~ 4.Sh4#

INTERESTING white battery play with:

- **delayed Siers battery** (the 9th WCCT theme) in 4 thematic variations,
- **masked battery-creation** (with unpin of black pieces) in the threat and after 1...c6,
- **play by white indirect batteries** in the threat after 3...B:f4 4.S:g7#, and in the variation 1...c6 after 3...R:e5 4.Sd4#;

The main content is supplemented by:

- **square vacation** after 1...c6 (wS mates on the square e7 vacated by 3.R:e5+) and after 1...Sf3+ (wS mates on the square h4 vacated by 3.Kh5),
- thematic try showing **Dombrovskis paradox** between the try 1.Sh7? (2.♠) x! and the solution 1.Kh4!, 1...x 2.Sc2+, 1...Sf3+ 2.♠,

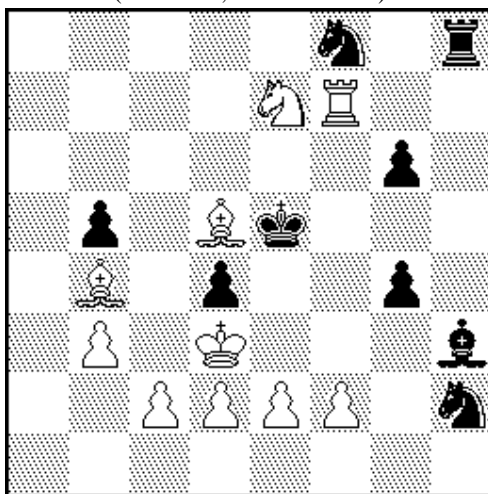
Judging country Finland: "Nice key, thematic threat and some thematic content also in the try."

E-mail of Zoran Gavrilovski: mprobl@yahoo.com

6. Zoran Gavrilovski

2nd Comm. *Die Schwalbe* 2013

(issue 263, October 2013)



#5 ^{v [v v]}

10+9 (C+)

1.e4? **A** (2.Sc6#) d:e3 e.p. **x** 2.c4! **B** (3.Sc6#)
2...Bf1+/b:c4+ 3.Kc3 **C**/b:c4 **D** b:c4/Bf1+
4.b:c4 **D**/Kc3 **C** (5.Sc6# & 5.d4#) Se6 5.Sc6#
1...Bf1#!

[1.Sc6+? K:d5! 2.Rf6 Se6!;

1.c3? (2.c:d4#) Sf3! 2.e:f3 Bf1+!]

1.c4! B (2.Sc6#) d:c3 e.p. **y** 2.e4! **A** (3.Sc6#)
[2.K:c3? Se6! (2...Sf3? 3.e:f3) 3.e4 Sc5 4.d4+ Kd6
5.Sc8+ R:c8!]
2...Bf1+ 3.Kc2! (4.Sc6#) [3.K:c3? Rh3+!]
3...Bd3+ 4.K:c3 **C** (5.Sc6#) B:e4 5.d4#

UNIQUE combination of

1. Logical *Berlin* theme (try play fails because Black can mate White; a preparatory manoeuvre enables White to turn the black move into check);

2. "Letter" themes

- **pseudo reversal** 1.**A**? x 2.**B**, 1.**B**! y 2.**A**,
- **exchange of W3 and W4 moves** (**C-D/D-C**) in the try;

3. Strategic effects:

- **en passant captures**,
- changed wK's flight after 2...Bf1+ in the try (3.Kc3) and the solution (3.Kc2!),
- avoidance of K:c3 until the 4th move in the solution.

E-mail of Zoran Gavrilovski: mprobl@yahoo.com