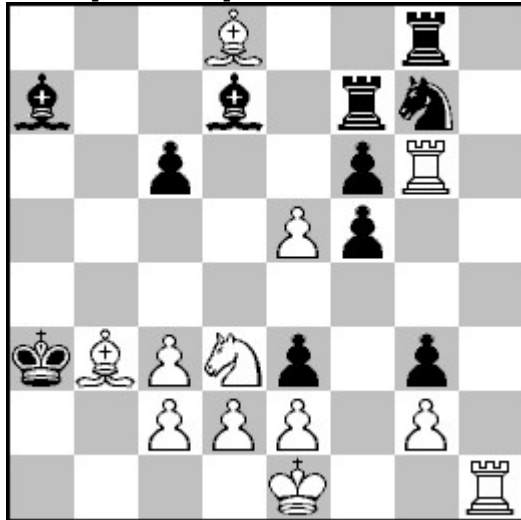


## C) Moremovers

### C1. Bosko Miloseski

Super problem TT-79 2013

1 HM [ 3. Place]



#7

12+11 C+

1.Bc7? Be6! 2.Bd6+ c5 3.0-0 B:b3!  
1.0-0? ed2+ 2.Kh1 Rh8+ 2.Rh6 R:h6#  
1.Ba5? Rb8 2.Bb4+ [2.0-0? ed2+ 3.Kh1  
Rh8+ 4.Rh6 R:h6#] R:b4 3.0-0 ed2+ 4.Kh1  
Rh4#  
**1.Rg4!** fg4 2.Ba5! Rb8 3.Bb4+ R:b4 4.0-0  
ed2+ 5.Kh1 d1=Q 6.R:d1 ~ 7.Ra1#

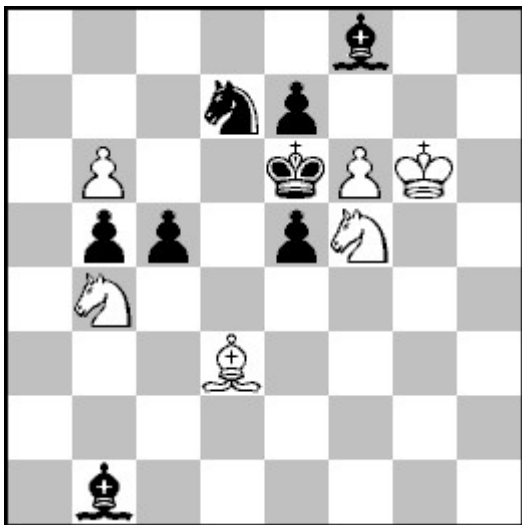
*Berlin theme*

*Castling*

*Sacrifice*

## C2. Bosko Miloseski

Problemist Ukraine 2013, C143, 4  
Comm.



1.Bc4#?? bc4!

**1.fe7!** (2.e8=Q/R+) L:e7 (1...Sf6 2.ef8=S#)  
2.Sg7+ Kd6 3.Se8+ Ke6 4.Sc7+ Kd6 5.S:b5  
Ke6 6.Sc7+(6.Bc4#?) Kd6 7.Se8+ Ke6  
8.Sg7+ Kd6 9.Sf5+ Ke6 10.Bc4#  
1...cb4 2.e8=Q+ Kd5 3.Q:d7+ Bd6 4.Q:d6#.

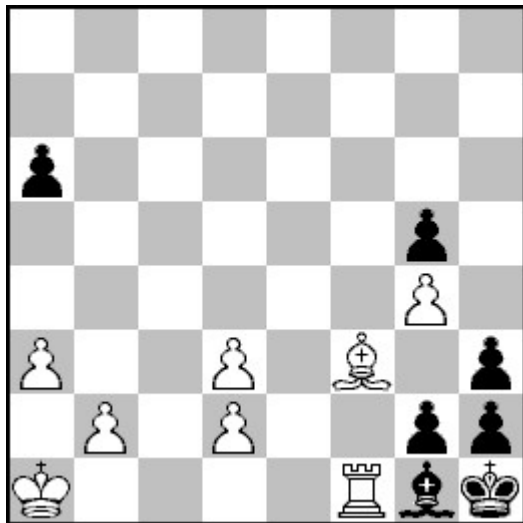
*Self-pin and self-unpin white Bd3  
Switchback wSf5.*

### C3. Bosko Miloseski

Yury Lazarov MT-90

Uralski Problemist 2013

3 HM



#11

8+7 C+

**1.Ka2!** a5 2.Ra1 a4 3.Bd1 Bf2 4.B:a4+ Bg1  
5.Kb1 Bf2 6.Kc2+ Bg1 7.Kd1 Bf2 8.Ke2+ Bg1  
9.Rf1[Switchback] gf1=Q+ 10.K:f1 ~  
11.Bc6#  
7...Be3 8.Ke2+ g1=S 9.Kf1 Sf3 10.Bc6 ~  
11.Bf3#

*Switchback*

*Battery creation*

*Switchback[Be3, Rf1]*

*Umnov[a1, d1]*

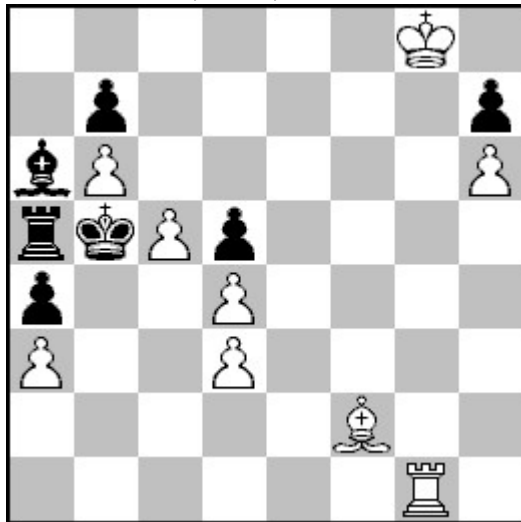
*Rundlauf wBf3[d1, a4, c6, f3]*

*Change of the places[Ka1-Rf1]*

*Indian theme-double[RB and RK]*

### C4. Bosko Miloseski

Schach 2014, 5/14, 17.922



#11

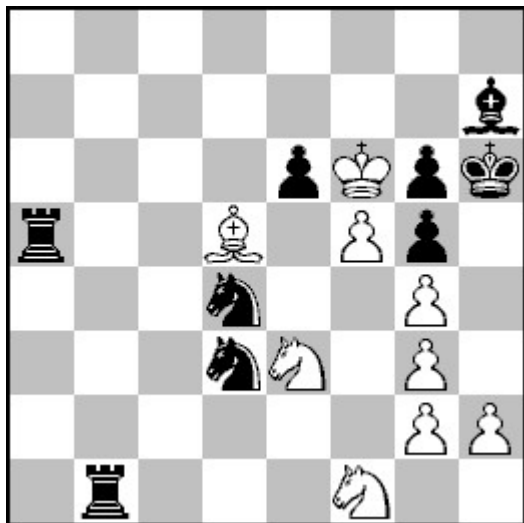
8+7 C+

1.Rg6? hg6!

**1.Rg7!** Kc6 2.Rc7+ Kb5 3.Rd7 Kc6 4.Rd6+ Kb5 5.R:d5 Kc6 6.Rd6+ Kb5 7.Rg6! hg6 8.d5 g5 9.h7 g4 10.h8=Q g3 11.Qb2#

## C5. Bosko Miloseski

Variantim 2013



#9

9+9

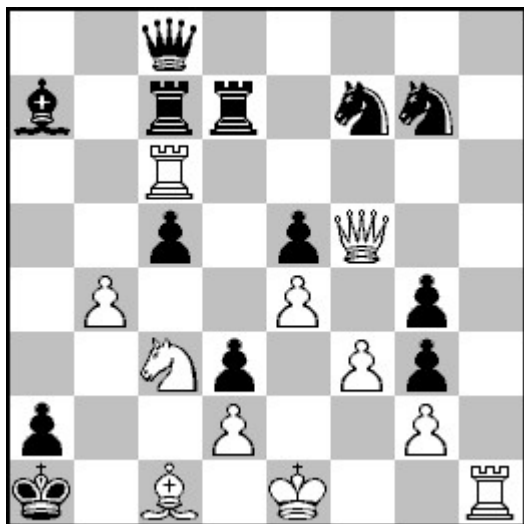
C+

1.h4! [2.hg5#] Bg8 2.hg5+ Kh7 3.fg6+ Kh8  
4.g7+ Kh7 5.g6+ Kh6 6.g5 Kh5 7.g4+ Kh4  
8.g3+ Kh3 9.Bg2#  
1...Sf3?? 2.gf3 Bg8 3.fg6+ R:d5 4.S:d5 gh4  
5.g5+ Kh5 6.g4#

Switchback

## C6. Bosko Miloseski

Makedonski problemist 2013, 1427,  
4 HM



#6

11+13 C+

1.0-0? Cb4+ 2.Kh1 Qh8+ 3.Rh6 Q:h6+

4.Qh5 Q:h5#

1.Ra6? Q:a6 2.0-0 cb4+ 3.Kh1 Qh6+ 4.Qh5

Q:h5#

**1.Qe6!** S:e6 2.Ra6! Q:a6 3.0-0! Cb4+ 4.Kh1

4...Qa4 5.Ba3+ Qd1 6.R:d1#

4...Bf2 5.Ba3+ Be1 6.R:e1#

4...R:c3 5.Ba3+ Rc1 6.R:c1#

*Berlin theme*

*Castling*

*Sacrifice*