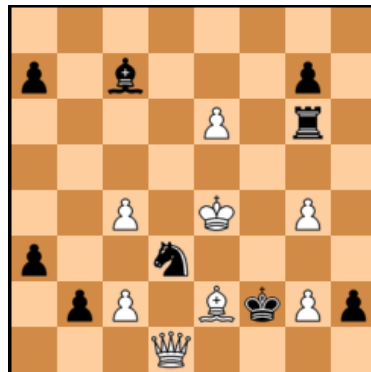


WCCI 2013-2015
Problem N°1
Mario Guido García
(Argentina)
3rd HM ChessStar 2013



#16

wKe4,Qd7,Be2,Pc2,c4,e6,g2,g4/bKc5,Nd3,Bc7,Rg6,Pa3,a7,b2,g7,h2

Solution

1.Qf1+ Kg3 2.Qf3+ Kh4 3.Qh3+ Kg5 4.Qh5+ Kf6 5.Qf5+ Ke7 6.Qf7+ Kd6 7.Qd7+ Kc5 8.Qd5+!

8.Qd4+? Kb4 9.c5+ Ka5 10.Qc3+ Ka6 11.Qxd3+ Kb7 12.Qa6+ (12.Qd5+ Kb8 13.e7 Re6+ 14.Qxe6 a5 15.e8Q+ Bd8 16.Qb6+ Kc8 17.Qexd8#) 12...Kb8 13.e7 Re6+ 14.Qxe6 h1Q 15.e8Q+ Bd8 16.Qxd8+ Kb7 17.Ba6#

8...Kb4 9.Qb5+!

9.Kxd3? Rg5 10.Qxg5 a6 11.Qe7+ Bd6 (11...Ka4 12.Qd7+ Kb4 13.Qxc7 Ka4 14.Qb6 a2 15.Qxa6+ Kb4 16.Qb5+ Ka3 17.Qb3#) 12.Qxd6+ Ka5 13.Qc5+ Ka4 14.Qb6 a2 15.Qxa6+ Kb4 16.Qb5+ Ka3 17.Qb3#

9...Kc3 10.Qb3+ Kd2 11.Qxd3+ Ke1 12.Qd1+ Kf2 13.Qf1+ Kg3 14.Qe1+ Kxg2 15.Bf1+ Kh1 16.Bh3#

WCCI 2013-2015
Problem N° 2
Mario Guido García
 (Argentina)
 ChessStar 2013



#18

1.c8Q Qxc8

1...Nf5+? 2.Qxf5 Qh8+ 3.Kd3 Qxc3+ 4.Kxc3 Ra6 5.d7! g1N 6.Qc2+ Kb5 7.Qd3+ Ka4 8.d8Q Nxe2+ 9.Kc2 Bg6 10.Qxg6 Nd4+ (10...a1N+ 11.Kb1 Nc3+ 12.Bxc3 Ne6 13.Qge8+ b5 14.Qd5 Nc5 15.Qa2#) 11.Qxd4 a1N+ 12.Kb1 Rxc6 13.b5+ Kxb5 14.Qb4+ Ka6 15.Qa5#

2.Nxc8 ...With

a) 2...Ra6 3.Nb6+ Rxb6 4.Qa3+ Kb5 5.Qa5+ Kc6 6.Qc5+ Kd7 7.Qc7+ Ke6 8.Qe7+ Kf5 9.Qxg5+ Ke6 10.Qe5+ Kd7 11.Qe7+ Kc6 12.Qc7+ Kb5 13.Qc5+ Ka4 14.Qa5+ Kb3 15.Qa3+ Kc2 16.Qc3+ (Not 16.Qd3+? Kd1 17.Bxe3+ Ke1 18.Qd2+ Kf1 19.Qd1#) 16...Kd1 17.Qc1+ Kxe2 18.Qe1# MATE (1)

b) 2...Nf5 3.Kd3 Ra6 4.b3+ Bxb3 5.b5 Kxb5 6.Qxb3+ Kc6 7.Qc4+! Kd7 8.Qb5+ Kd8 (1) 9.Qxf5 Rxd6+ [9...Ra3? 10.Kc4 Ra4+ 11.Bb4 (11.Kb5 Ke8 12.Qg6+ Kd8 13.Qf6+ Kxc8 14.Qf8+ Kd7 15.Qe7+ Kc8 16.Qc7#) 11...Rxb4+ 12.Kxb4 a1Q 13.Qf8+ Kd7 14.Qe7+ Kc6 15.Qc7+ Kd5 16.Qc4#] 10.Nxd6 a1Q 11.Qc8+ Ke7 12.Nf5+ Kf7 13.Qd7+....With

b.1.) 13...Kf8 14.Qe7+ Kg8 15.Nh6+ Kh8 16.Qf8+ Kh7 17.Qg8+ Kxh6 18.fxc5# MATE (2)

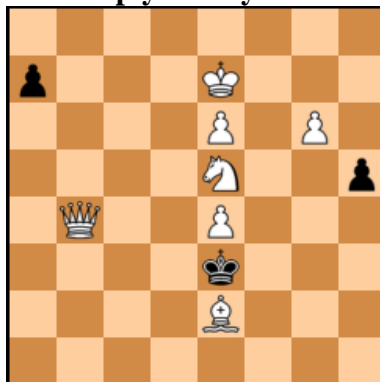
b.2.) 13...Kg8 14.Nh6+ Kh8 15.Qd8+ Kg7 16.Qxg5+....

b.2.1) 16...Kf8 17.Bb4+ Ke8 18.Qe7# MATE (3)

b.2.2.) 16...Kh7 17.Qg8+ Kxh6 18.f5# MATE (4)

In (1) 8...Rc6 9.Qxb7+ Ke6 10.d7 Rd6+ 11.Nxd6 +- in 18 moves no univocal

WCCI 2013-2015
Problem N° 3
Mario Guido García
 (Argentina)
 9th WCCT) 2012-2013
 Olimpiya Dunyasi 2013



#4

wKe7,Qb4,Ne5,Be2,Pe4,e6,g6/bKe3,Pa7,h5

Structure Meredith

1. Qe1!

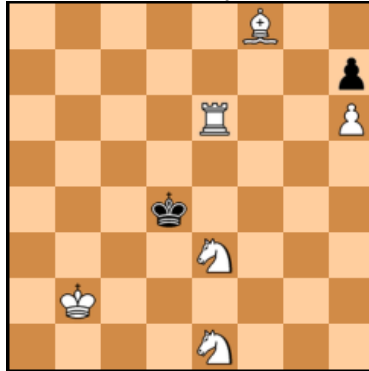
1...,Kf4; **2.Qf2,Ke5**; **3.Bd3,a5**; **4.Qf6++** If 2...,Ke4; **3.Kd6,a5**; **4.Bd3++**; If 2...Kg5;
 3.Qf6,Kh6; 4.Nf7++

1...,Kd4; **2.Qd2,Ke5**; **3.Bf3,a5**; **4.Qd6++** If 2...,Ke4; **3.Kf6,a5**; **4.Bf3++**

1...,Ke4; 2.Nc4,Kd5; 3.Qa5,Kc6/e4; 4.Bf3/Qe5++ If 2...,Kf5; 3.Qg3,Kd4; 4.Qe5++;

If 2...,Kf4; 3.Qh4,Kf5; 4.Bd3++ If 2...,a5/Kd4; 3.Qa5.....

WCCI 2013-2015
Problem N°4
Mario Guido García (Argentina)
JT55 F. Karmil –Ty ChessStar -2013



Diag.A #4 Mate in Four

wKb2,Ne1,e3,Bf8,Re6,Ph6/bKd4,Ph7

Solutions:

Diag A: 1.Kc1 Kc3 2.Bc5 Kb3 3.Ra6 Kc3 **4.Ra3#**

Diag B: Kb2→f6

1.Kf5 Kc3 2.Rb6 Kd2 3.Rb2 Kc1 **4.Nd3#**

3... Kc3 **4.Bg7#**

3... Kxe1 **4.Bb4#**

3... Kxe3 **4.Bc5#**

Diag C: Re6→h5

1.N3g2 Kc4 2.Bg7 Kb4 3.Bc3+ Ka4 [3...Kc4 4.Ne3#] **4.Ra5#**

1...Ke4 2.Bb4 Kd4 3.Bc3 Kc4 **4.Ne3#**

3... Ke4 **4.Re5#**

Diag D: Re6→g3

1.Bd6 .Ke4 2.Kc1/c2 Kd4 3.Kd2 .Ke4 **4.Rg4#**

Diag E: Ne3->b7

1.Kb3 Kd5 2.Nc5 Kd4 3.Ned3 Kd5 **4.Rd6#**

Mario Guido García
B° Castañares 200 Viv. Med. N° 26
4.400 – Salta – Argentina