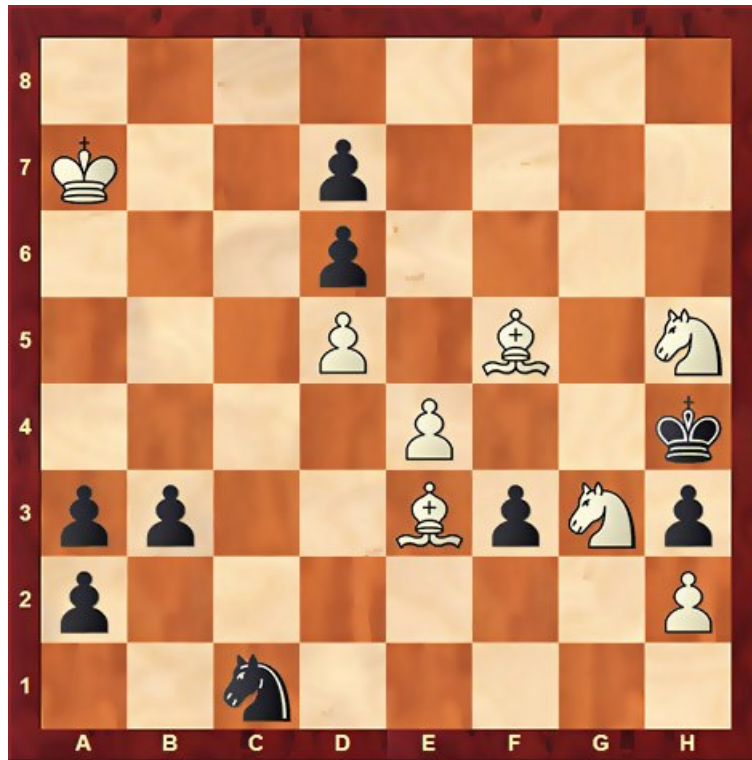


6 Problems for the 2013-2015 WCCI

Problem n°1 :

Olivier SCHMITT (olsc@free.fr) - THE PROBLEMIST 2014

C+



8+9

#14

Try : 1Fg6 ? (menace 2Cf5+ Rg4 3Cf6 mat) a1=D or f2

That's why White have to play two foregrounds in order to avoid one of these answers and to be prepared for the other one :

Key : 1**Fb6** ! (menace 2Fd8 mat) **Rg5** 2**Fd8**+ **Rh6** 3**Fa5** ! (menace 4Fd2 mat) **Rg5** 4**Fd2**+ **Rh4** then 5**Cf4** ! (menace 6Cg6 mat) **Rg5** 6**e5** ! (menace 7Cg6 or 7Cg2 mat) **dxe5** 7**Cfh5**+ **Rh4** and 8**Fg6** ! **f2** 9**Cf5**+ **Rg4** 10**Chg3** ! (menace 11Fh5 mat) **Rf3** 11**Ch4**+ **Rg4** 12**Fh5**+ ! **Rxh4** 13**Ff3** ! ~ 14**Cf5** mat

In the first foreground, the Fe3 move in d2 in order to anticipate the f3-f2 move by avoiding to be captured by the King after his flight in f3. Then the switchback of the Ch5 allow the sacrifice of the Pawn e4 which intercept the a1/f6 line.

This 2nd foreground can't be played first because 1Cf4 ? Rg5 2e5 dxe5 3Cfh5+ Rh4 4Fb6 Rg5 5Fd8+ Rh6 6Fa5 is refuted by 6..Ce2 ! 7Fd2+ Cf4.

Problem n°2 :

Olivier SCHMITT (olsc@free.fr) - HARMONIE 2014



6+14

#15

C+

(said by *Torsten*

Linss with *Gustav*)

Tries : 1Cg5+ ? Rxe5 2Cf3+ Re6 3Fhx5 (menace 4Fg4 mat) Rf5 4Td5+ Re4 ! 5Te5+ Rd3 ; 1Cd3 ? (menace 2Cxc5 or 2Cg5 mat) cxd3 ? 2Cg5+ etc. but 1..Cxd3 ! refute.

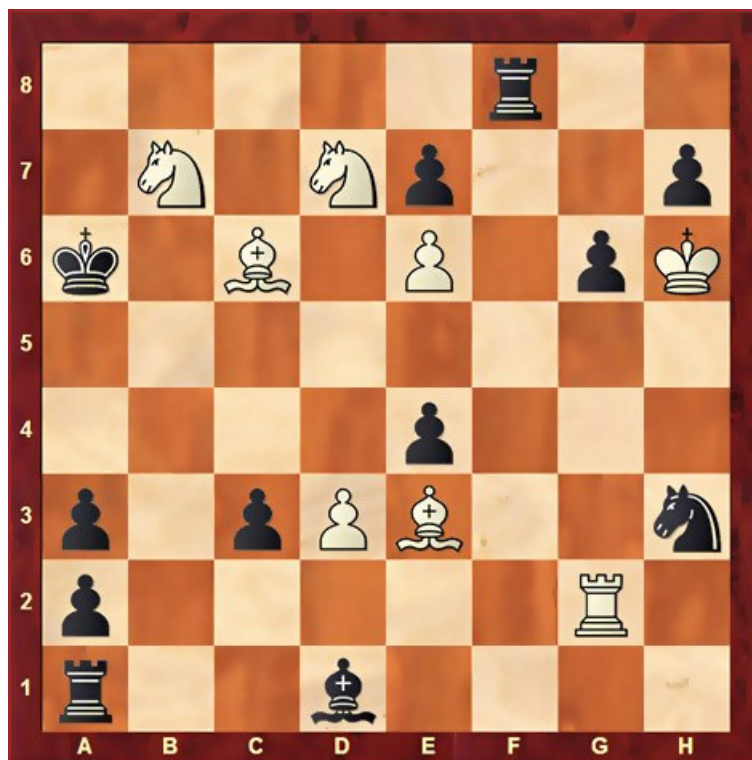
Key : 1Cd7 ! (menace 2Cxc5 or 2Cf8 mat) Rd5 2Cb8+ Re6 3Cg5+ (3Txa4 ? (menace 4Ca6 bxa6 5Txa6 mat) is premature because of 3..f3 !) 3..Re5 4Cf3+ (block the f4 pawn) Re6 then 5Txa4 ! Cxa4 6Cg5+ (not immediately 6Cd7 ? Rd6 ! 7Ce5+ Rc7) 6..Re5 7Cf7+ Re6 8Cd7 (menace 9Cf8 mat) Rd5 9Ce5+ Re6 and 10Cd3 ! (menace 11Cg5 mat) cxd3 11Cg5+ Re5 12Cf3+ Re6 13Fhx5 Rf5 14Td5+ Re4 (or 14..Re6 (e5) 15Ff7 (Txe5) mat) 15Te5 model mat

Two foregrounds are orchestrated by the white knights in order to pre-block the d3 square.

(5..d1=D 6Ta6+ Dd6 (6..bxa6 7Cg5+ Re5 8Cc6 mat) 7Taxd6+ exd6 8Te8+ Rd5 9Fe4 or 9Ff7 mat ; 5..Fh4 6Ca6 Ff6+ 7Rh7 F~ 8Cxc5+ or 8Cc7+ Rf6 9Tf8 mat)

Problem n°3 :

Olivier SCHMITT (olsc@free.fr) - STRATEGEMS 2014



8+12

#15

Try : 1Fb6 (menace 2Cbc5 mat) Tf5 2Fd4 (menace 3Cb8 mat) Tf8 3Cbc5+ Ra7 4Ca4+ ? Ra6 5Fb6 Fxa4 !

Key : 1Fb6 Tf5 2Fd4 Tf8 3Cbc5+ Ra7 4Cxe4+ Ra6 5Cec5+ Ra7 6Cb7+ ! Ra6 7Fb6 Tf5 8Fe3 ! Tf8 then 9Tg4 ! (menace 10Tb4 followed by 11Fb6 or 11Tb5) Fxg4 and 10Fb6 Tf5 11Fd4 Tf8 12Cbc5+ Ra7 13Ca4+ ! Ra6 14Fb6 Tf5 15Cb8 model mat

Switchbacks of two white pieces in the foreground in order to open the 4th row for the Rook. Then the black bishop is forced to lose control of the a4 square, allowing the Cb7 to take control afterwards of the b6 square.

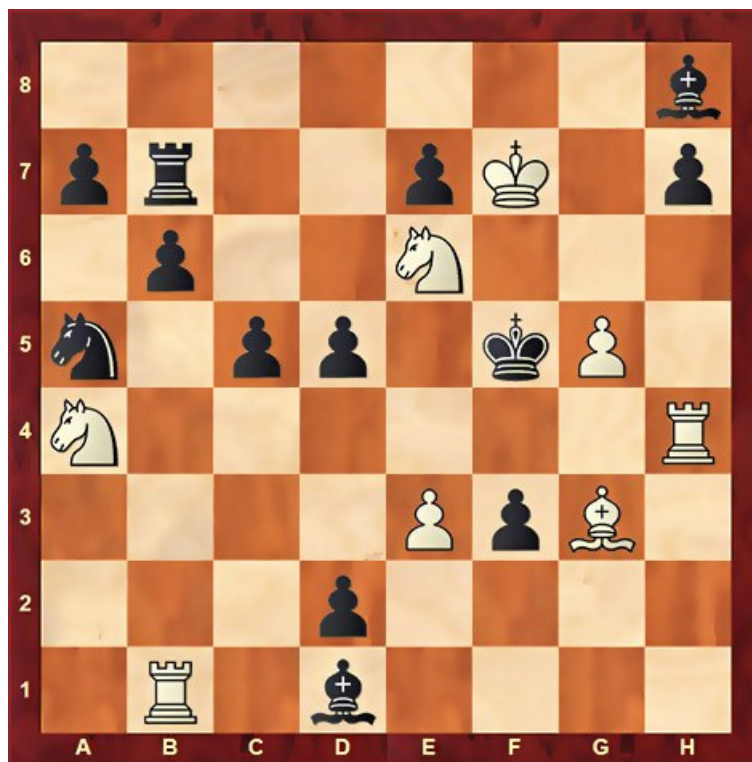
(9..Tb1 10Cbc5+ Ra5 11Cb3+ ! Fxb3 12Fb6+ Ra6 13Tb4 Tf5 14Cb8 mat ; 9..Cf2 10Tg5 Cg4+ 11Rg7 Ce5 (Tg8+) 12Txe5 (Rxc8) mate in #2)

(Tested OK with *Gustav* allowing two flight squares maximum for the black King during the solution. Also tested with *Houdini 4*.)

Problem n°4 :

Olivier SCHMITT (olsc@free.fr) - PROBLEEMBLAD 2013

Prize



8+13

#16

Tries : 1Cg7+ ? Rxc5 ? 2Ce6+ etc. but 1..Fxc3 ; 1Cc3 ? (menace 2Tf4+ Re5 3Txf3 mat or 3Tf6 mat) Fxc3 ? 2Tf4+ Re5 3Td4+ Rf5 and 4Cg7+ etc. but 1..Fe5 ! 2e4+ dxe4 3Cd4+ cxd4 ! That's why the Pawn c5 must be deviated first :

Key : **1T1b4 !** (menace 2Tf4+ Re5 3Txf3 or 3Tf6 mat) **cxb4** but now 2Cc3 ? doesn't still work because of 2..bxc3 so **2Tf4+ Re5 3Txb4+ Rf5 4Tf4+ Re5 5Th4+ Rf5** then **6Cc3 ! Fxc3** (because after **6..Fe5** can be played 7e4+ dxe4 8Cd4+ ! Fxd4 9Tf4+ Rxc5 10Cxe4+ R~ 11Th4 mat) **7Tf4+ Re5 8Td4+ ! Rf5** followed by **9Cg7+ ! Rxc5 10Ce6+ Rf5 11Tf4+ Re5 12Th4+ Rf5** and finally **13e4+ ! dxe4 14Th5+ Rg4 15Tg5+ Rh3 16Cf4** model mat

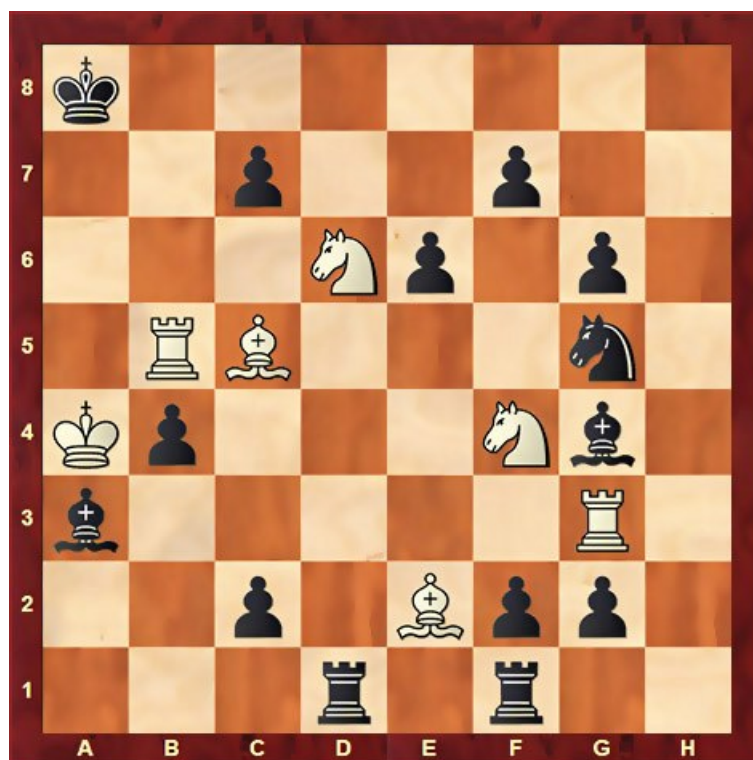
Two foregrounds : a deviating sacrifice is followed by a first switchback of the Th4 which correct a white damage due to the key. Then the sacrifice of the Ca4 force a critical crossing of the g7 and d4 squares by the Fh8 which allow the Th4 to intercept it. A switchback of the Ce6 can afterwards be played in order to annihilate the Pawn g5. A second different switchback of the Rook and a blocking sacrifice conclude the solution.

(1..Fe5 2Tf4+ Fxf4 3Txf4+ Re5 4Th4+ Rf5 5Cc3 followed by **6Tf4+ Re5 7Txf3 or 7Tf6 mat)**

(Tested OK with *Gustav* allowing two flight squares maximum for the black King during the solution.)

Problem n°5 :

Olivier SCHMITT (olsc@free.fr) - SCHACH 2014



7+14

#21

Tries : 1Ce8 ? (menace 2Cxc7 mat) Td7 ; 1Cd5 ? (same menace) Txd5 ! ; 1Ff3+ ? Fxf3 ! ; 1Th3 ? (menace 2Th8 mat) Th1 !

Key : 1Ta5+ Rb8 2Fa7+ Ra8 3Fxf2+ ! (not immediately 3Fd4+ ? Rb8 4Tb5+ Ra8 5Cd5 exd5 ... 10Ce8 Ce6 !) Rb8 4Fa7+ Ra8 5Fg1+ ! Rb8 6Th3 ! Fxh3 7Fa7+ Ra8 8Ff2+ ! Rb8 9Tb5+ Ra8 10Ff3+ ! Cxf3 11Ta5+ Rb8 12Fa7+ Ra8 13Fd4+ ! Rb8 14Tb5+ Ra8 15Cd5 ! (menace 16Cxc7 mat) exd5 16Ta5+ Rb8 17Fa7+ Ra8 18Fc5+ ! switchback Rb8 19Tb5+ Ra8 and 20Ce8 ~ 21Cxc7 model mat

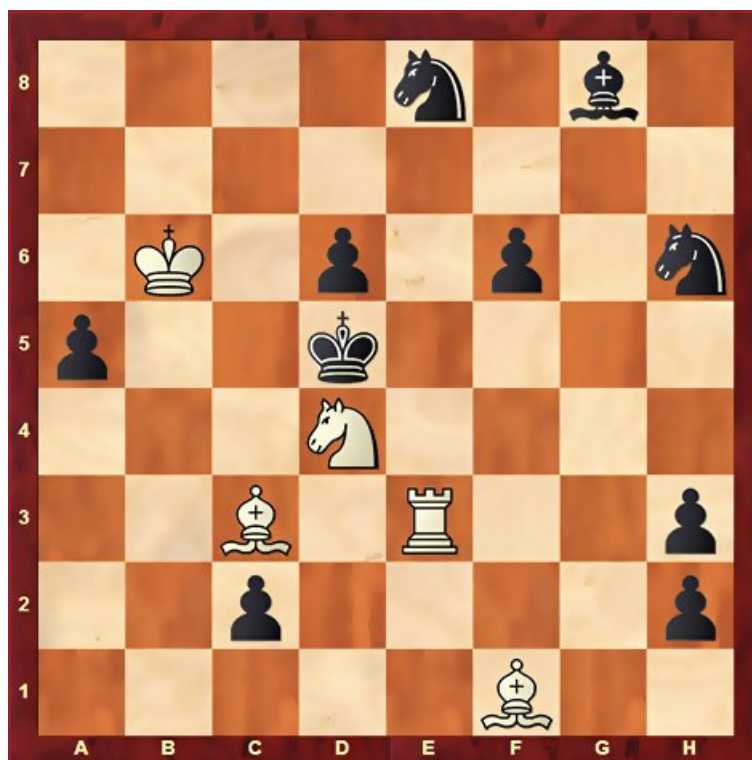
The Fc5 intercept three times the black Rooks allowing to play three deviating sacrifices which have these objectives : the Fg4 lose control of the f3 square then the black knight can't play Ce6 anymore and finally the Td1 can't reach d7. At the end the white Bishop must go back to c5 in order to intercept the 'c' column.

(6..Fh5 7Tb5+ Ra8 8Fhx5 ! (menace 9Ff3+ and 10Th8 mat) 8..Cxb3 9Ta5+ Rb8 10Fa7+ Ra8 11Ff2+ Rb8 12Tb5+ Ra8 13Ff3+ Td5 14Cxd5 exd5 (Txf2) 15Fxd5+ (Cxc7+) ; 6...Cxb3 7Fa7+ Ra8 8Fd4+ Rb8 9Tb5+ Ra8 10Cd5 exd5 etc. ; 6..Fb2 7Fa7+ Ra8 8Fd4+ Rb8 9Th8 mat ; 15..c1=D 16Ta5+ Rb8 17Fa7+ Ra8 18Fc5+ Rb8 19Tb5+ Ra8 20Cxc7 mat)

(Tested OK with *Gustav* allowing two flight squares maximum for the black King during the solution)

Problem n°6 :

Olivier SCHMITT (olsc@free.fr) - SCHACH 2013



5+10

#15

Try : 1Cc6 ? (menace 2Ce7 mat) Cf5 2Fg2+ hxg2

Key : 1Ce2 ! (menace 2Cf4 mat) Rc4 2Cc1+ Rd5 3Cd3 (same menace) Rc4 4Cc5+ Rd5 5Td3+ Rc4 6Txb3+ Rd5 7Td3+ Rc4 8Te3+ ! Rd5 9Cd3 Rc4 10Cc1+ Rd5 11Ce2 Rc4 12Cd4+ Rd5 and 13Cc6 Cf5 14Fg2+ Rc4 15Cxa5 model mat

In a light position, the switchbacks of the duo C/T which intercept alternately the Ff1 allow the Ph3 to be eliminated in the foreground.

(Tested OK with *Gustav* allowing four flight squares maximum for the black King during the solution)