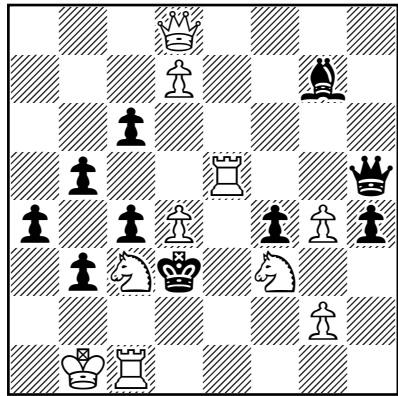


No1

Srećko Radović, Serbia

9.WCCT (Section#3/B 12)

6th Place



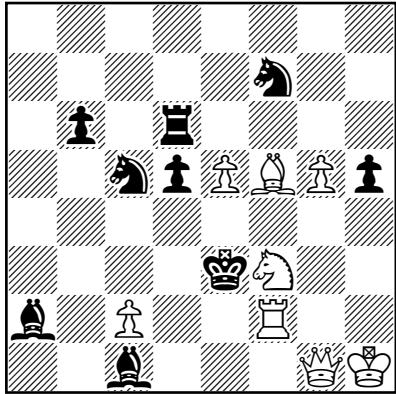
#3

10+10

- 1.Re5-e2 ! threat:
2.Re2-d2 +
2...Kd3-e3
3.Rc1-e1 #
- 1...Qh5-f5
2.Qd8-a5 threat:
3.Rc1-d1 #
2...b5-b4
3.Qa5*f5 #
- 1...Qh5-g6
2.Qd8-b6 threat:
3.Sf3-e1 #
2...c6-c5
3.Qb6*g6 #
- 1...Qh5-h7
2.Qd8-e7 threat:
3.Re2-d2 #
2...Bg7-e5
3.Qe7*h7 #
2...Qh7-e4
3.Qe7*e4 #

Black battery creation vs white ambush creation; three white men are supported by white Q, while three black men simultaneously open and close white Q lines

No2
Srecko Radovic, Serbia
StrateGems 2014
 5th Prize



#3 8+9
SetPlay

1...S*e5 2.Qe1 + Kf4 3.Q*e5 #
 1...S*g5 2.Rf1 + Ke2 3.Qf2 #
 2...Kf4 3.Q*g5 #

1.Sd4 ! threat:

2.Sb5 threat:

3.Qg1-e1 #

3.Qg1-g3 #

1...S*e5 2.Rg2 + Kf4 3.Q*c1 #

1...S*g5 2.Re2 + Kf4 3.Qh2 #

1...Sc5-e6/e4/d3/b3 2.Rf3 + Kd2 3.Rd3 #

1...K*d4 2.Rf4 + K*e5 3.Qd4 #

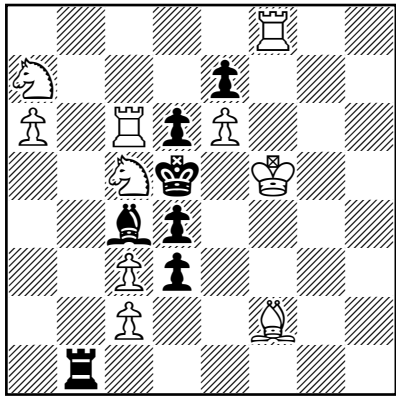
2...Kc3 3.Qd4 #

1...Bc4 2.Qg3 + K*d4 3.c3 #

1...h4 2.Re2 + Kf4 3.Qg4 #

Change of play after capture of white pawns, and cross moves of white rook

No3
Srečko Radovic, Serbia
JK Chepiznji 80
 2nd Comm.



#3

10+7

SetPlay

1...Bc4-a2

2.Sc5*d3 threat:
 3.Sd3-f4 #

1...Bc4*a6

2.Sc5*a6 threat:
 3.Sa6-c7 #
 3.c3-c4 #

1.Sc5-a4 ! threat:

2.Rc6-c5 +
 2...d6*c5
 3.Rf8-d8 #

1...Bc4-a2

2.c3*d4 threat:
 3.Sa4-c3 #
 2...Rb1-b3
 3.c2-c4 #

1...Bc4*a6

2.Rf8-d8 threat:
 3.Rc6-c5 #
 2...Rb1-b5
 3.c3-c4 #

1...Rb1-b7

2.a6*b7 threat:
 3.Sa4-b6 #

1...Rb1-b8

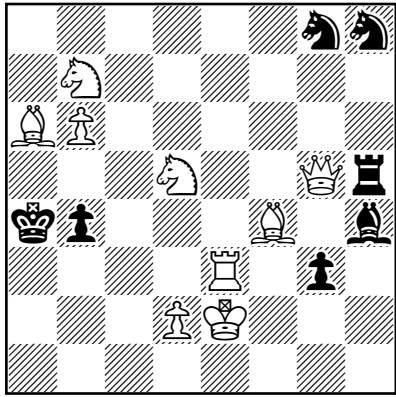
2.Rf8*b8 threat:
 3.Sa4-b6 #

Two changed variations from the set play. Line interference after critical moves of black bishop

No4

Srecko Radovic, Serbia

"Kobulchess", 2015-02-22



#3

9+7

1.Bc7! (2.Sc5+ Ka5 3.b7#)

1...Rh6 2.Qe5! (3.Qa1#) 2...Bf6 3.Qe8#

1...Rh7 2.Qg4! (3.Qxb4#) 2...Be7 3.Qd7#

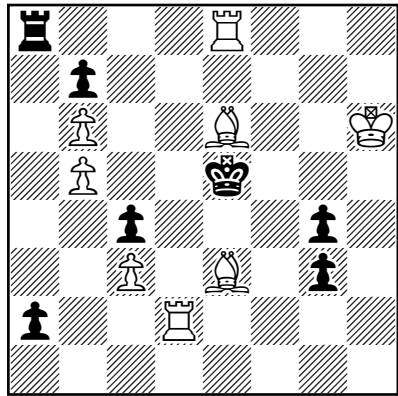
[1...b3 2.Bd6 (3.Sc3/Qf4/Qg4/Re4#) 2...Sf6 3.Sc3#]

Ambush key. Quiet white continuation with Gate opening for black, anticipating the second move black interference.

No5

Srečko Radovic, Serbia

Politika, 2013-01-06



#3

8+7

SetPlay

1...Ke5-e4

2.Be6-c8 +

2...Ke4-f3

3.Bc8*b7 #

1...Ke5-f6

2.Be3-d4 #

1...g3-g2

2.Be6-c8 +

2...Ke5-f6

3.Rd2-f2 #

1.Rd2-e2 ! threat:

2.Be3-g5 +

2...Ke5-d6

3.Bg5-e7 #

1...Ra8*e8

2.Be3-c1 +

2...Ke5-d6

3.Bc1-a3 #

2...Ke5-f6

3.Bc1-g5 #

1...Ke5-d6

2.Be6-c8 threat/Ra8*c8

3.Re2-d2 #

1...Ke5-e4

2.Be3-d2 +

2...Ke4-d3

3.Be6-f5 #

2...Ke4-f3

3.Be6-d5 #

Solving puzzle. Model mates. Flight giving key