

# WCCI 2013-2015

Charles Ouellet

[charles.ouel@hotmail.com](mailto:charles.ouel@hotmail.com)

A) Twomovers: A1, A2, A3, A4, A5, A6

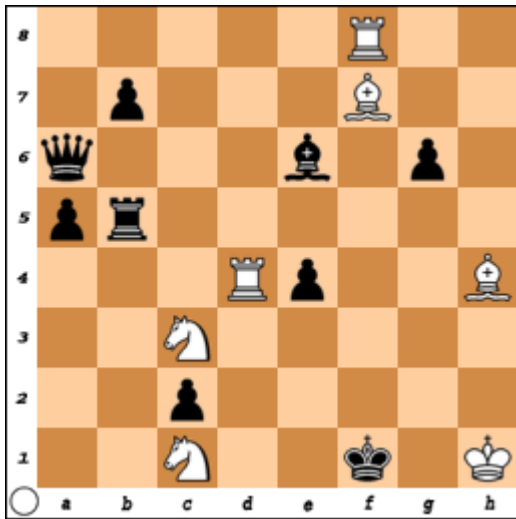
A1 – Charles Ouellet

[charles.ouel@hotmail.com](mailto:charles.ouel@hotmail.com)

**“The Macedonian Problemist” League 2013 7<sup>th</sup> Place**

Supplement to The Macedonian Problemist 42

September-December 2013



#2 vvv

7+9

1.Sd1? (>2.Se3#) c:d1 – **a** 2.R:d1# **A** 1. – Rb3!

1.S:e4? (>2.Sd2#) Bd5 **b** 2.Be6# **B** 1. – Qc6!

1.Sb3? (>2.Sd2#) c1B c/R:b3 **d**/B:b3/e3

2.Rd1 **A**/B:e6 **B**/Bc4/Rf4# 1. – c1Q!

**1.Sb1!** (>2.Sd2#) c:b1 – **e**/R:b1 – **f**/e3

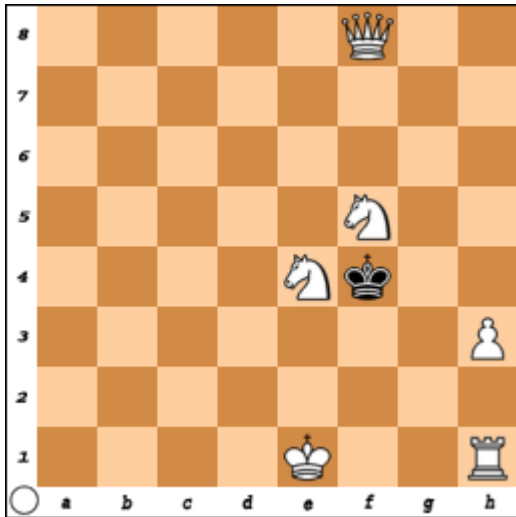
2.Rd1 **A**/B:e6 **B**/Rf4#

A2 – Charles Ouellet

[charles.ouel@hotmail.com](mailto:charles.ouel@hotmail.com)

## StrateGems Miniature Tourney IV 1<sup>st</sup> Honorable Mention

StrateGems Vol.16 SG64 October-December 2013



#2 b) wPh3 → c2 6+1

a) **1.Seg3!** (ZZ) Kf3/Ke5/Kg5 2.0-0/Qd6/Qh6#

b) **1.Sfg3+!** Ke3/Ke5/Kg4 2.Qf2/Qd6/Qf5#

Keymoves on the same square by identical units.

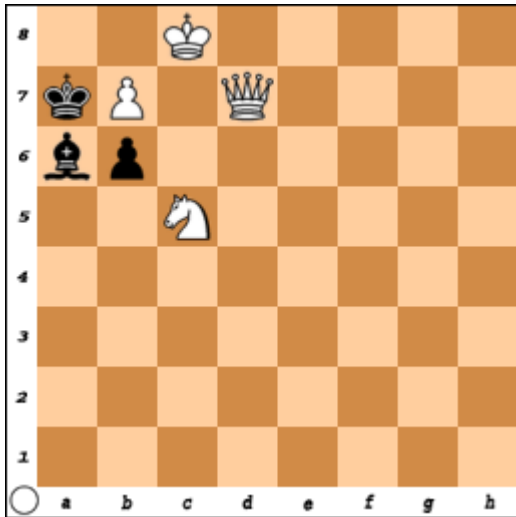
*Theme:* **Black must have three post-key “y-flights”**. The squares may be two orthogonal and one diagonal or two diagonal and one orthogonal. Ideally, there should be some useful strategic element. (...) Twins are permitted.

A3 – Charles Ouellet

[charles.ouel@hotmail.com](mailto:charles.ouel@hotmail.com)

## StrateGems Miniature Tourney V 1<sup>st</sup> Prize

StrateGems Vol.18 SG69 January-March 2015



#2 4+3

1.Kc7? (>2.b8Q#) B:b7!\*

1.Qc7? (>2.Qb8#) b5!\*

1.Qa4? (>2.Q:a6#) b:c5!

1.S:a6? (ZZ) K:a6 2.Qa4# 1. – b5!

1.Sa4? (ZZ) b5 2.Qd4# 1. – B – !

1.Qc6! (ZZ) 1. – B –/b5/b:c5/B:b7+ 2.b8Q/Q:a6/Q:c5/Q:b7#

*Theme: Post-key play must have at least one unpin of White or Black as the prominent interest. Twins are permitted but should contain different unpin strategy. \*Yenakievo-Novoselitsk theme.*

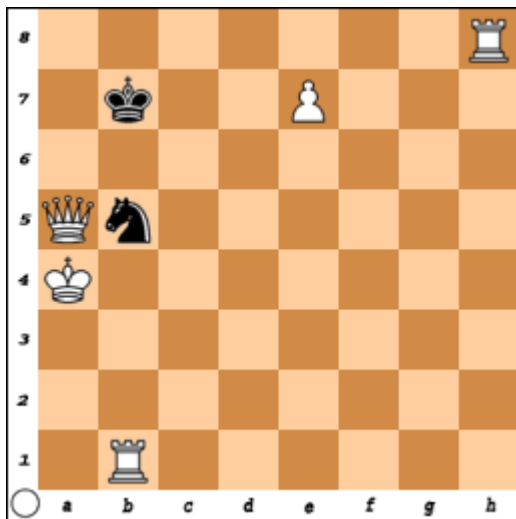
A4 – Charles Ouellet

[charles.ouel@hotmail.com](mailto:charles.ouel@hotmail.com)

**Problemist Ukrajin 14 TT 2015 2<sup>nd</sup> Honorable Mention**

Problemist Ukrajin December 2015

<http://www.chess-kopyl.com.ua/>



#2 b) bSb5 → bBb2 5+2

a) 1.e8S? (ZZ) Kb8/Kc6 2.Sd6/Q:b5# 1. – Kc8!

**1.e8B!** (ZZ) Kb8/Kc8 2.Bc6#

b) 1.e8B? (ZZ) Kb8 2.Bc6# 1. – Kc8!

**1.e8S!** (ZZ) Kc8/Kb8/Kc6 2.Qc7/Sd6/Qb5#

a + b) 1.Rh7? (>2.e8Q#) Kc6!

*Theme:* Miniatures with at least one changed mate, which also includes at least one changed white promotion in the thematic variant(s). (...) Twins by moving or exchanging a white piece are not allowed. Other types of twins are allowed.

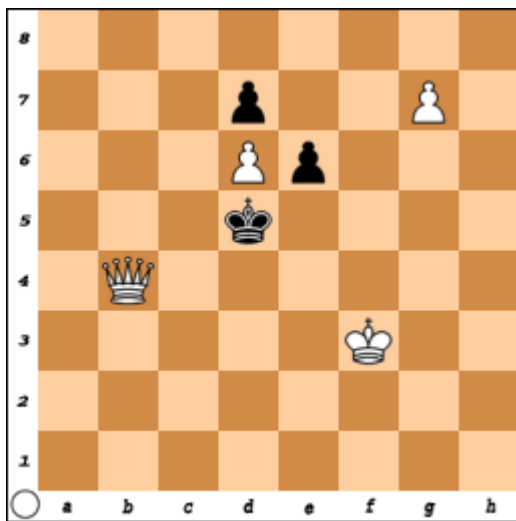
A5 – Charles Ouellet

[charles.ouel@hotmail.com](mailto:charles.ouel@hotmail.com)

**Problemist Ukrajinu 14 TT 2015 4<sup>th</sup> Honorable Mention**

Problemist Ukrajinu December 2015

<http://www.chess-kopyl.com.ua/>



#2

4+3

1.g8S? (ZZ) Kc6/Ke5 2.Se7/Qc5# 1. – e5!

1.g8Q! (ZZ) Kc6/Ke5 2.Qa8/Qg5#

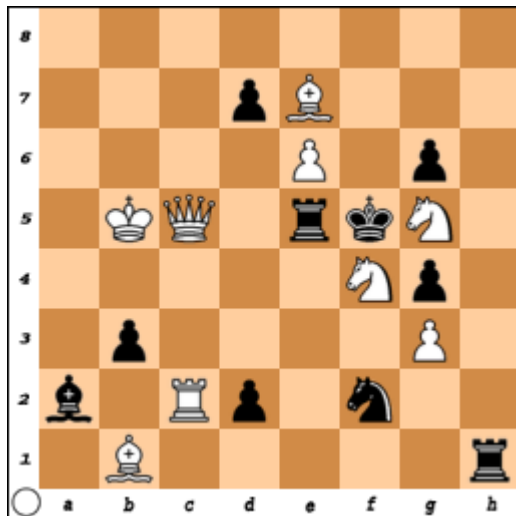
*Theme:* Miniatures with at least one changed mate, which also includes at least one changed white promotion in the thematic variant(s). The promotion can take place at either the 1<sup>st</sup> or 2<sup>nd</sup> move, and may also take place at different moves in different phases of the play, e.g. at move 1 in the solution and at move 2 in the set play. Twins by moving or exchanging a white piece are not allowed. Other types of twins are allowed.

A6 – Charles Ouellet

[charles.ouel@hotmail.com](mailto:charles.ouel@hotmail.com)

## Die Schwalbe 2014 1<sup>st</sup> Honorable Mention

Die Schwalbe Vol.XXX1 No268 August 2014 16002



#2\* vv

9+10

1. – Sd1/R:c5+/Rd5 2.R:a2/R:c5/Q:d5#

1.Se2? (>2.Sd4#) R:c5+/Rd5 2.R:c5/Q:d5# 1. – d1Q,d1R!

1.Sd5? (>2.Se3,Q:f2#) d1S/Rd5 2.R:f2/Q:d5# 1. – Sd1!

**1.Sg2!** (>2.Se3#) Re1/d1S/Sd1/R:c5+/Rd5/d5

2.Sh4/R:f2/R:a2/R:c5/Q:d5/Q:f2#

