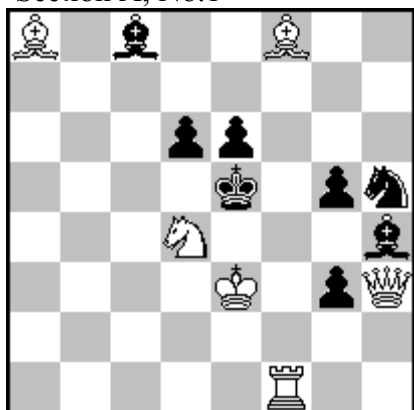


NIKOLA STOLEV, stolev@t.mk
 BiT TT,2014, 2 comm.

Section A, No.1



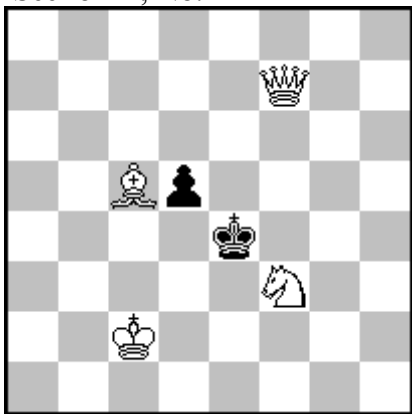
- 1. ♖g2? ~ 2. ♘c6/♗e4# - A/B
- 1... ♗f4 2. ♕g7#
- 1... ♗f6 2. ♘c6#~
- 1... ♕d7 2. ♗e4#~
- 1... ♕b7! - a
- 1. ♕g2? ~ 2. ♘c6# - A
- 1... ♕d7!
- 1. ♗g4! ~ 2. ♗e4# - B (2.Sc6? Kd5! 2.Sf3? Kf6!)
- 1... ♗f4 2. ♕g7#
- 1... ♗f6 2. ♘f3#
- 1... d5 2. ♘c6#
- 1... ♕b7 2. ♗e6:≠

NIKOLA STOLEV, stolev@t.mk

1 Place, 15 points

118 TT, Super Problem, 2014

Section A, No.2



#2

4/2

1. ♖h4? – 2. ♕f5#, 1...d4!

1. ♖d4! (~) zz

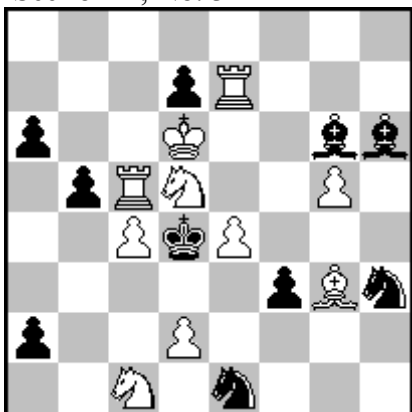
1...♔e3 2. ♕f3#, 1...♔e5 2. ♕f5#

In the refutation of try black complete line-closing of white bishop from square e3. In the solution white do the same and the threat of try become a mate in variation. It is a combination of theme tourney and caprice theme. Unforgettable six-piece problem with story (judge: Valery Kirillov).

NIKOLA STOLEV, stolev@t.mk

BIT TT, comm..., 2015

Section A, No. 3



#2vvvvv

10/10

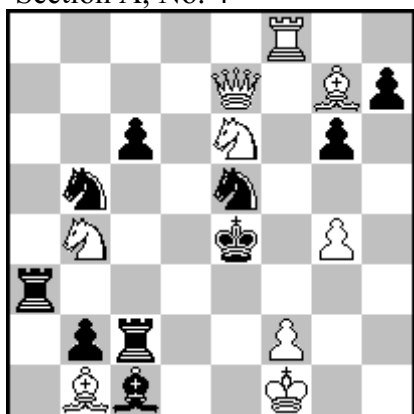
- 1. ♖b4? ~ 2. ♖b3#
- 1... bc4 2. ♜d5#
- 1... a1♜!
- 1. ♖c3? ~ 2. ♙e5#
- 1... ♖d3 2. ♖b3#
- 1... ♗f4 2. ♙f2#
- 1... ♙g7!
- 1. ♖e3? ~ 2. ♜d5#
- 1... ♙e4: 2. ♙e5#
- 1... ♙f7 2. ♖f5#
- 1... ♗f4!
- 1. ♖f4? ~ 2. ♖b3#
- 1... ♗f4: 2. ♙f2#
- 1... bc4 2. ♜d5#
- 1... a1♜!
- 1. ♖b6? ~ 2. ♜d5#
- 1... ♗f4 2. ♙f2#
- 1... ♙e4: 2. ♙e5#
- 1... ♙f7!
- 1. ♖f6! ~ 2. ♙e5#
- 1... ♖d3 2. ♖b3#
- 1... ♗f4 2. ♙f2#

Thematic condition: At least three phases begin with different moves of the same white piece. In the first phase the threat is A. After a black defense, there is a mate B (or C). Another phase uses B as threat, and C (or A) as the mate after black defense. In the same way, the third phase uses C as threat, and A (or B) as the mate in variation. Multiple threats are not allowed.

Double Le Grand, cyclic, pseudo.

NIKOLA STOLEV, stolev@t.mk
Kobulchess, 11.07.2015

Section A, No. 4



≠2*v

9/10

1. ♖c5! ~ 2. ♖e5:≠

1... ♔f4 2. ♖f4:≠

1... ♘e~ 2. ♖c6:≠

1... ♘d3 2. f3≠

1. ♖f6? ~ 2. ♖e5:≠

1... ♔f4 2. ♖f4:≠

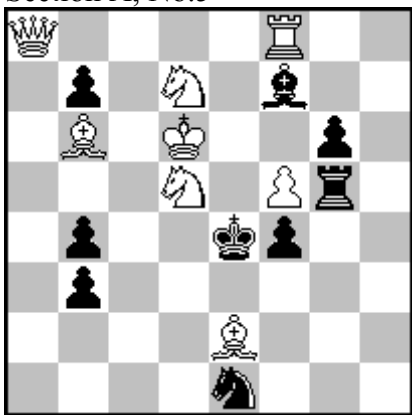
1... ♘e~ 2. ♘c5≠

1... ♘d3 2. ♖f3≠

1... ♘d7!

NIKOLA STOLEV, stolev@t.mk

The Macedonian problemist-43, 2014, br.1498
Section A, No.5



≠2*

8/9

1. ♖a5? ~ 2. ♘5f6≠
 1... ♔f5: 2. ♘c3≠ (2. ♘5f6+?)
 1... ♖f5: 2. ♗b4:≠
 1... ♕d5: 2. ♗d5:≠
 1... f3!
 1. ♗c8! ~ 2. ♘7f6≠
 1... ♔f5: 2. ♘c5≠ (2. ♘7f6+?)
 1... ♖f5: 2. ♗c4≠
 1... ♕e6 2. ♗c4≠

Familiar play with a changed mate after the royal Schiffmann defence and an additional change of mate after a self-block of the flight-square. Let's hope that this nice idea has not been shown in exactly the same matrix. (Z.G.-editor)