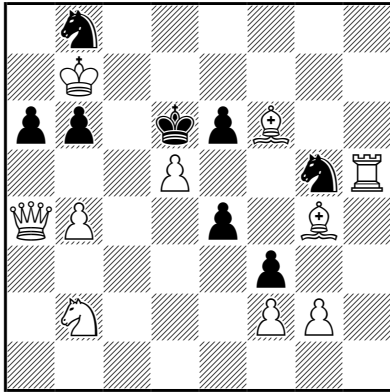


Jan DUČÁK

562 PAT A MAT 88/2014



#2 (10 + 8)

B: Pe6→e5

C: B + Kd6→c1

A)

1.Kb7*b8 ? threat 2.Qa4-c6 #

1...e6*d5 2.Qa4-d7 #

1...Kd6*d5 2.Qa4-d7 #

1...b6-b5 !

1.Qa4-d1(C) ? threat 2.d5*e6(A) #

1...e6*d5 2.Sb2-c4(B) #

1...Sb8-c6 2.d5*c6 #

1...Kd6-d7 !

1.d5*e6(A) ! threat 2.Qa4-d1(C) #

1...Sg5*e6(a) 2.Sb2-c4(B) #

1...Sb8-c6 2.Qa4*c6 #

B) Pe6→e5

1.Kb7*b8 ? threat: 2.Qa4-d7 #, 2.Qa4-c6 #

1...b6-b5 !

1.Qa4-d1(C) ? threat 2.Sb2-c4(B) #

1...Sg5-e6(a) 2.d5*e6(B) #

1...b6-b5 !

1.Qa4-e8 ! threat 2.Qe8*e5 #

1...Sg5-e6(a) 2.Qe8*e6 #

1...Sb8-d7 2.Qe8*d7 #

C) position B + Kd6→c1

1.Sb2-c4 ? threat 2.Rh5-h1 #

1...f3*g2 2.Qa4-d1(C) #

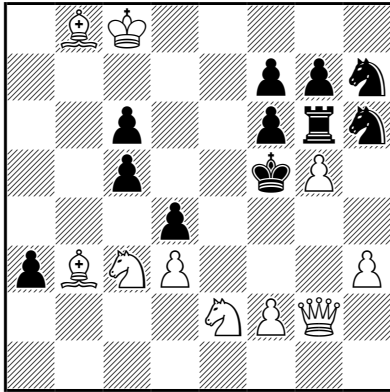
1...Sg5-h3 !

1.Bf6*e5 ! threat 2.Qa4-d1(C) #

1...Kc1-b1 2.Rh5-h1(D) #

Jan DUČÁK

15819 Die Schwalbe 265/2014



#2 (10 + 11)

1.h3-h4 ? threat 2.Qg2-e4(A) #, 2.Qg2-f3(B) #
 1...Sh7*g5(c) !

1.Sc3-e4 ? threat 2.Qg2-f3(B) #, 2.Se2-g3(C) #
 1...c5-c4 2.Se2*d4 #
 1...Rg6*g5(a) !

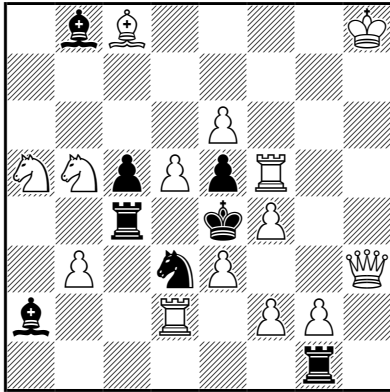
1.f2-f4 ? 2.Se2-g3(C) #, 2.Qg2-e4(A) #
 1...f6*g5(b) !

1.Sc3-a2 ? zugzwang
 1...Rg6*g5(a) 2.Qg2-e4(A) #
 1...f6*g5(b) 2.Qg2-f3(B) #
 1...Sh7*g5(c) 2.Se2-g3(C) #
 1...Sh6 ad lib 2.Qg2*g4 #
 1...c5-c4 2.Se2*d4 #
 1...Sh7-f8 !

1.Sc3-d5 ! threat 2.Sd5-e7 #
 1...f6*g5(a) 2.Qg2-e4(A) #
 1...Kf5-e6 2.Qg2-e4(A) #
 1...c5-c4 2.Se2*d4 #
 1...c6*d5 2.Qg2*d5 #
 1...Sh6-g4 2.Qg2*g4 #

Jan DUČÁK

12787 Šachová skladba 128/2015



#2 (14 + 8)

1.Sa5*c4 ? threat 2.Sb5-c3(A) #
 1...Ke4*d5(a) 2.Qh3-f3(B) #
 1...Rg1-c1 !

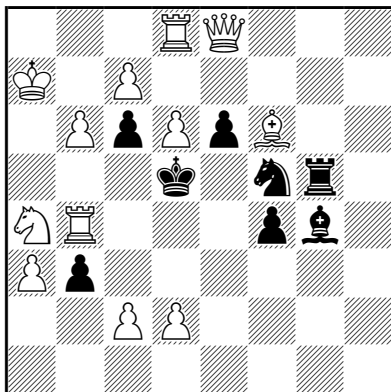
1.Rf5-h5 ! threat 2.Qh3-f3(B) #
 1...Ke4*d5(a) 2.Bc8-b7(C) #
 1...Sd3-e1 2.Qh3-f5 #
 1...Rg1*g2 2.Qh3*g2 #

1.d5-d6 ? threat 2.Bc8-b7(C) #
 1...Ke4-d5(a) 2.Rf5*e5(D) #
 1...Rc4-d4 2.Sb5-c3(A) #
 1...Sd3-b4 2.Rf5*e5 #
 1...Sd3*f4 !

1.Qh3-h7 ? threat 2.Rf5*e5(D) #
 1...Ke4*d5(a) 2.Qh7-b7(E) #
 1...Sd3*f4 2.Rf5*f4 #
 1...Rg1*g2 !

Jan DUČÁK

A08 9. WCCT (3,00 points)



#2 (12 + 8)

1.Ka7-b7 ? threat 2.Qe8*c6(A) #
1...Sf5*d6(a) !

1.Rb4-c4 ? threat 2.Qe8*c6(A) #
1...Kd5*c4 2.Qe8*c6(A) #
1...e6-e5(e) 2.Qe8-f7 #
1...c6-c5(b) !

1.d2-d4 ? threat 2.Sa4-c3(B) #
1...Kd5-e4(c) !

1.Bf6-d4 ? threat 2.Sa4-c3(B) #
1...Kd5-e4(c) 2.Qe8*c6(A) #
1...Sf5*d4(d) !

1.Rb4-e4 ! threat 2.Qe8*e6 #
1...Sf5*d6(a) 2.Re4-d4 #
1...c6-c5(b) 2.Sa4-c3(B) #
1...Kd5*e4(c) 2.Qe8*c6(A) #
1...Sf5-d4(d) 2.Re4*d4 #
1...e6-e5(e) 2.Qe8*e5 #



WORLD FEDERATION
FOR CHESS COMPOSITION

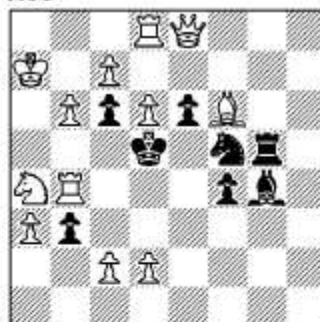
9th WORLD CHESS COMPOSITION
TOURNAMENT 2012-13

ENTRIES
SECTION A: TWOMOVERS

Judging countries: Germany, Serbia, Slovakia, Russia, Ukraine
Reserves: Great Britain, Slovenia

Theme: In a directmate in 2 moves, two tries have the same threat A. Another two tries have the same threat B. In the solution neither move A nor move B is a threat but both become mates in variations.

A08



#2

(12+8) C+

A08

1.Rc4? [2.Qxc6# **A**]
1...e5 2.Qf7#
1...Kxc4 2.Qxc6#
but 1...c5! **a**

1.Kb7? [2.Qxc6#]
but 1...Sxd6+!

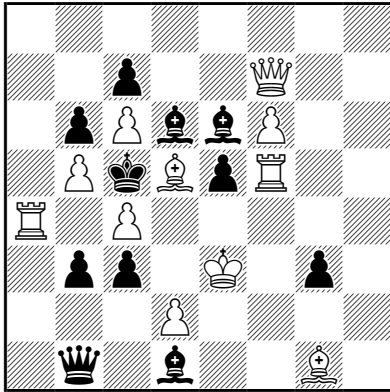
1.d4? [2.Sc3# **B**]
but 1...Ke4! **b**

1.Bd4? [2.Sc3#]
but 1...Sxd4!

1.Re4! [2.Qxe6#]
1...c5 **a** 2.Sc3# **B**
1...Kxe4 **b** 2.Qxc6# **A**
1...e5 2.Qxe5#
1...S~ 2.R(x)d4#

Jan DUČÁK

15440 15440 Die Schwalbe 259/2013



#2 (11 + 11)

Duplex

1.Bd5-e4(A) ! threat 2.d2-d4(B) #

1...Be6*f5(a) 2.Qf7-d5 #

1...Qb1-d3(b) + 2.Ke3*d3 #

1...Qb1*e4(c) + 2.Ke3*e4 #

1...c3*d2 2.Ke3*d2 #

1...Be6*c4 2.Qf7*c4 #

1...Be6-d5 2.Qf7*d5 #

1...Bd6-e7 2.Qf7*e7 #

1...Bd6-f8 2.Qf7*f8 #

Duplex:

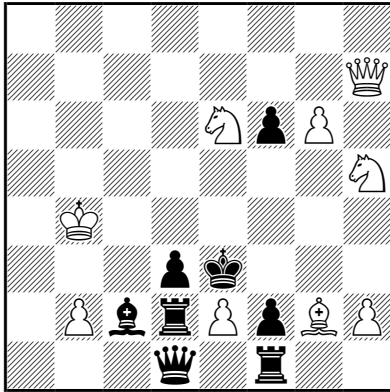
1.Be6*f5(a) ! threat 2.Qb1-d3(b) #

1...Bd5-e4(A) 2.Qb1*e4(c) #

1...d2-d4(B) + 2.e5*d4 #

Jan DUČÁK

329 PAT A MAT86/2013



#2 Zero (9 + 8)

A: +wRc5

B: wPf6

A) +wRc5

1.Sh5-g3 ? threat 2.Qh7-h6(A) #

1...d3*e2(a) !

1.Sh5-f4 ? threat 2.Qh7-h3(B) #

1...Rd2*e2(b) !

1.Qh7-a7(C) ? threat 2.Rc5-e5 #

1...d3*e2(a) 2.Rc5-c3 #

1...Rd2*e2(b) 2.Rc5*c2 #

1...Ke3*e2 !

1.g6-g7 ? threat 2.Qh7-e4 #

1...Rd2*e2(b) 2.Qh7-h6(A) #

1...Ke3*e2 2.Qb7-e4 #

1...d3*e2(a) !

1.Qh7-b7 ? threat 2.Qb7-f3 #, 2.Qb7-e4 #

1...Ke3*e2 2.Qb7-e4 #

1...Rd2*e2(b) !

1.Sh5*f6 ! threat 2.Rc5-e5 #

1...d3*e2(a) 2.Qh7-h3(B) #

1...Rd2*e2(b) 2.Qh7-h6(A) #

1...Ke3*e2 2.Rc5-e5 #

B) wPf6

1.Sh5-g3 ? threat 2.Qh7-a7(C) #, 2.Qh7-h6(A) #,

1...d3*e2(a) !

1.Sh5-f4 ? threat 2.Qh7-a7(C) #, 2.Qh7-h3(B) #

1...Rd2*e2(b) !

1.Qh7-c7 ! threat 2.Qc7-e5 #

1...d3*e2(a) 2.Qc7-g3 #

1...Rd2*e2(b) 2.Qc7-f4 #

1...Ke3*e2 2.Qc7-e5 #