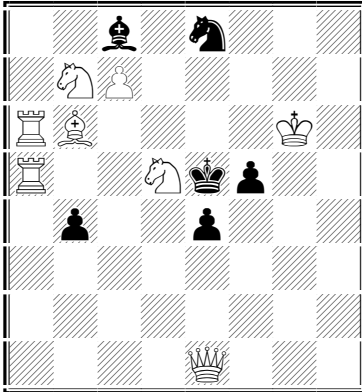


Anatoly Slesarenko, №1
 FIDE cup, 2015
 Prize, 3



#2 8+6

Defence 1

1. ♔f2 ? - 2. ♘d4(A), ♘f4(B) #

1...e3 2. ♔:e3 #

1...♙e6 2. ♔:f5 #

but

1... ♘d6 !

1. ♔h4 ? - 2. ♘f4(B) #

1...e3 2. ♘d4 (A) #

1...♙e6 2. ♔he7 #

1... ♘d6 2. ♔f6 #

but

1... ♘d7 !

1. ♔:b4 ! - 2. ♘d4 (A)#

1...e3 2. ♘f4 (B) #

1...♙e6 2. ♔be7 #

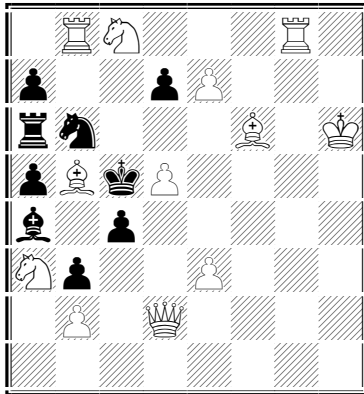
1... ♘d6 2. ♔:d6 #

Barns, le Grand, Zagoruiko

Anatoly Slesarenko №2

FIDE cup, 2013

Prize, 2



#2 12+9

Defence 1

1. ♖:c4 ? - 2. ♖d4 #

1... ♗~ 2. ♕d4 #

1... ♗:d5 2. ♕:d5 #

but

1... ♗:c8 !

1.d6 (A) ? ZZ

1... ♗~ 2. ♖g5 (B) #

1... ♗d5 2. ♖d4 (C) #

but

1... ♖:b5 !

1. ♖g5 (B) ! - 2. ♖d4(C) #

1... ♗~ 2.d6 (A) #

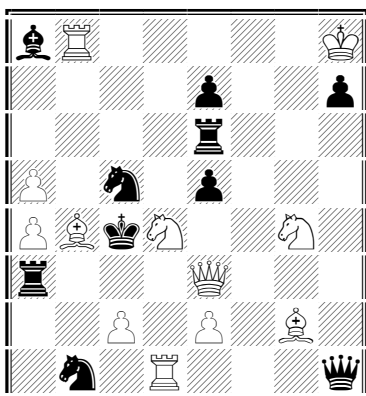
1... ♗:d5 2. ♖:d5 #

1...c3 2. ♕d4 #

Dombrovskis, Salazar (Reversal I), Zagoruiko, anticipatory unpinning

Anatoly Slesarenko №3

Shakhmatnaya kompozitsiya, 2015, №126 (A41)



#2 12+10

Defence 1

1. ♔:e5 ? - 2. ♔:c5 #

1... ♘c~ 2. ♔b5 #

1... ♘d3! 2. ♘e3 #

1... ♖:e5 2. ♘:e5 #

1... ♖c6 2. ♔d5 #

but

1... ♔h5 !

1. ♘b3 ? - 2. ♔:c5 #

1... ♘c~ 2. ♔d3 (A)#

1... ♘b7! 2. ♔e4 (B)#

but

1... ♔g1 !

1. ♘c6 ! - 2. ♔:c5 #

1... ♘c~ 2. ♔e4 (B) #

1... ♘b3! 2. ♔d3 (A)#

1... ♖:e3 2. ♘:e3 #

1... ♖:c6 2. ♘:e5 #

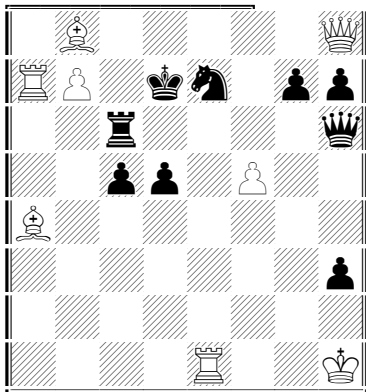
1... ♔g1 2. ♘d5 #

Black correction in 3 phases. reciprocal change of mates.

Anatoly Slesarenko №4

Hero cities match, 2015

Place, 7



#2 8+9

Defence 1

1. ♖h2 (~) ? - 2. b8=♔ (A), b8=♕ (B) #

but

1... ♔f4 !

1. ♖e5 ?! - 2. b8=♔ (A), b8=♕ (B) #

but

1... ♕:f5 !

1. ♖c7 ?!! - 2. ♔d8 (C), b8=♕ (B) # (A)?

1... ♔:c7 2. b8=♔ (A) #

but

1... ♕g8 !

1. ♖d6 !! - 2. b8=♔ (A)# (B)?

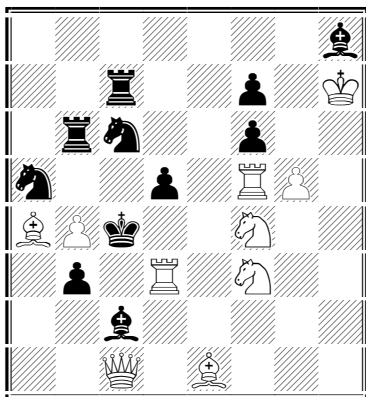
1... ♔:d6 2. b8=♕ (B)#

1... ♔:d6 2. ♔d8 (C)#

1... ♕c8 2. bc8=♕ #

Double pseudo le Grand with white promotions, white correction, choice of threats.

Anatoly Slesarenko №5
 Team championship of Russia, 2014



#2 10+11

Defence 1

SetPlay

1... ♖c~ 2. ♜3d4 #

1... ♖:b4 2. ♜c3 #

1. ♜a3 ? - 2. ♜c3, (A) ♖d2 (B) #

but

1... ♗:d3 !

1. ♜:b3 ? - 2. ♜:c2 #

1... ♖:b4 2. ♜c3 (A) #

1... ♖d4 2. ♖d2 (B) #

but

1... fg5 !

1. ♜d:d5 ? - 2. ♜c5 #

1... ♖:b4 2. ♜d4 # (♖d2?)

but

1... ♖b7 !

1. ♜f:d5 ! - 2. ♜c5 #

1... ♖c~ 2. ♜5d4 # (♜3d4?)

1... ♖:b4 2. ♖d2 # (♜3d4?, ♜c3?)

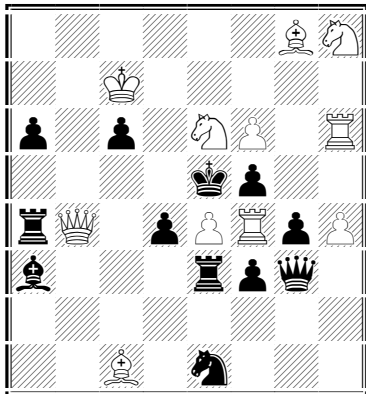
(1... ♖b7 2. ♗:b3 #

1... ♜b5 2. ♗:b5 #)

Change of play, mating combinations due to selfpin.

Anatoly Slesarenko №6

Pat a Mat, 2015



#2 11+12

Defence 1

1. ♔e7 ? - 2. ♖f7 (A), ♖g6 (B) #

1... ♕:f4 2. ♖c5 (C) #

1... ♜e4 2. ♖h5 #

1... ♖:e4 2. ♖c5 #

but

1... ♗:e7 !

1. ♖c5 (C)! - 2. ♖:f5 #

1... ♕:f4 2. ♖f7 (A) # - Erochin th

1... ♜e4 2. ♖g6 (B)# - Dombrovskis

1... ♖:e4 2. ♖d7 #

1... ♗:f4 2. ♖g6 #

Rychkov-Slesarenko combination (Erochin and Dombrovskis themes in Rudenko form)