

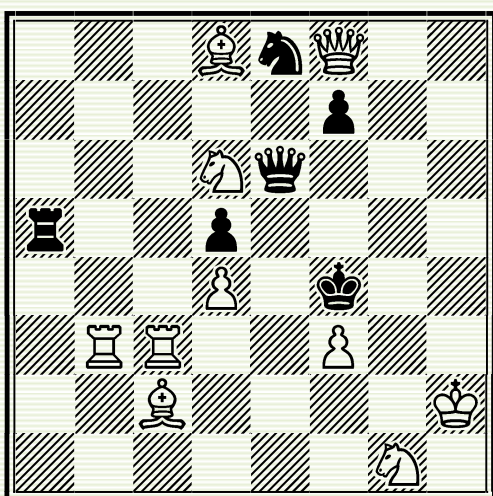
No. 1

“Die Schwalbe” - 12.2015 No. 16502

Award to be published

Mark Basisty (Ukraine)

basist_mb@ukr.net



10+6

C+

#2

Vectors theme with triple interference with the same black piece on different lines: a record! A cycle of mates; dual avoidance. Pseudo Le Grand.

Compared to analogues featuring the closing of three lines for a queen (see <http://www.yacpdb.org/#36947> or <http://www.yacpdb.org/#37781>), the problem has thematic set play and is devoid of any duals in the thematic variants of all the phases.

Set Play:

1. ... Qh6 [a] + 2. Qxh6 [A] #

1. ... Qh3 [b] + 2. Sxh3 [B] #

1. ... Qe2 [c] + 2. Sxe2 [C] #

Try: 1. Qh6 [A] +

But 1. ... Qxh6 [a] +

Try: 1. Sh3 [B] +

But 1. ... Qxh3 [b] +

Try: 1. Se2 [C] +

But 1. ... Qxe2 [c] +

Try: 1. Bf6? [2. Qh6 [A] #]

1. ... Qxf6 2. Sh3 [B] # (2. Se2?)

1. ... Qe2+/f5/g4 2. S(x)e2 [C] #

But 1. ... Sg7!

Try: 1. Sf5? [2. Sh3 [B] #]

1. ... Qxf5 2. Se2 [C] # (2. Qh6?)

1. ... Qh6+/e3 2. Q(x)h6 [A] #

But 1. ... Qe4!

Solution: 1. Re3! [2. Se2 [C] #]

1. ... Qxe3 2. Qh6 [A] # (2. Sh3?)

1. ... Qe7/f6/h3+ 2. S(x)h3 [B] #

Тема векторов с трехкратным перекрытием одной и той же черной фигуры по разным линиям- таск! Цикл матов, антидуали.

Псевдо-ле Гранд.

По сравнению с аналогами на отсечение ферзя по 3 линиям

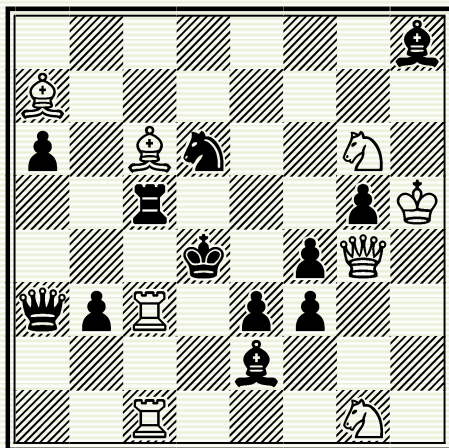
(см. <http://www.yacpdb.org/#36947> или <http://www.yacpdb.org/#37781>)

в задаче есть тематическая иллюзорная игра и отсутствуют дуали в тематических вариантах во всех фазах.

No. 2

Vladimirov-80 JT, 2015, 2nd Prize

Mark Basisty (Ukraine) basist_mb@ukr.net



8+12

C+

#2

Try: 1.Qe6? But 1. ... Qxc1!

Try: 1. Qxf3? [2. Sxe2 [A] #]

1. ... g4+ 2. Qd5 [B] #

1. ... Be-- 2.Qd5#

1. ... Bd1 2. Qxd1#

1. ... Qb2(a2) 2. Bxc5#

1. ... Bxf3+ 2. Sxf3#

But 1. ... Bc4!

Solution: 1. Qxg5! [2. Qd5 [B] #]

1. ... f2+ 2. Sxe2 [A] #

1. ... Sf5 2. Qxf4#

1. ... Be5 2. Qxe5#

1. ... Qxc1 2. Qxc5#

1. ... Bc4 2. Sxf3#

In the initial position, a white piece prevents check to the white king which otherwise could be delivered by opening a line for a black line piece. In one of the phases, the white piece leaves the thematic line, thus allowing the check to be delivered; and in another phase, the piece self-pins, capturing the line-opening black piece. In this problem, this theme is presented in double cross-form, with unpin of the white queen in both phases.

Pseudo Le Grand. Black Correction.

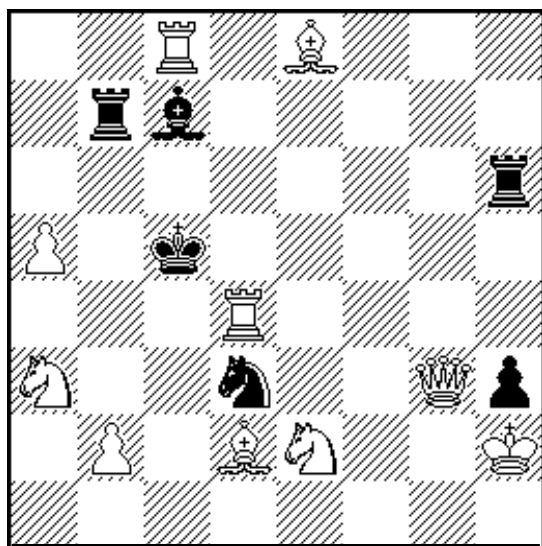
В начальной позиции белая фигура препятствует шаху белому королю вскрытием черной линейной фигуры. В одной из фаз белая фигура уходит с тематической линии, допуская шах, а в другой фазе – самосвязывается, забирая вскрывающую черную фигуру. В данной задаче представлена удвоенная перекрестная форма идеи с развязыванием белого ферзя в обоих фазах.

Тема псевдо-ле Гранд. Черная коррекция.

No. 3

2nd Prize SuperProblem TT80 – 2013

Mark Basisty (Ukraine) basist_mb@ukr.net



#2

C+

10-6

Set Play:

- 1. ... Rd6[a], Rh5[b] 2.Q(x)d6#
- 1. ... S - 2.Qe5#
- 1. ...Sf4 [c] 2.Qc3# (2.Qe5#?)
- 1. ...Sb4! [d] (2.Qe5#?, 2.Qc3#?)

Try: 1.Sc3? [2.Rc4 [A] #] (2.Rd5 [B]?)

- 1. ...Rb4 2.Rd5 [B]#
- 1. ...Kxd4 [e] 2.Be3#
- 1. ...Sxb2/Se5 2.Qe5 #
- 1. ...Rh4 2.Qd6#
- But 1. ...Sf4! [c] (2.Qc3#?)

Solution: 1.Sf4! [2.Rd5 [B]# (2.Rc4 [A] ?)]

- 1. ...Rd6 [a] 2.Rc4 [A]#
- 1. ...Rh5 [b] 2.Se6#
- 1. ...S xf4 [c] / Sb4 [d] 2.Qc3 #
- 1. ...Kxd4[e] 2.Qe3#

Caprice, Sushkov theme, pseudo Le Grand, nodal squares theme, change of play.

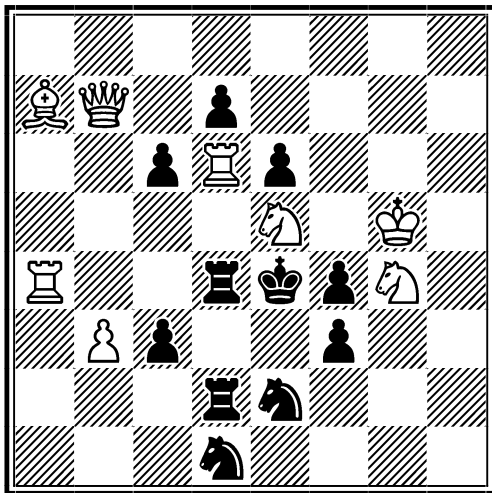
Каприз, тема Сушкова, псевдо-ле Гранд, тема узловых полей, перемена игры.

No. 4

17th Team Championship of Ukraine, 2014,
2nd place

Mark Basisty
(Ukraine)

basist_mb@ukr.net



8+11 C+ #2

Try:

- 1. Rxc6? --- 2. Rd6# (2.Rca6?)
- 1. ... Kd5 2. Rca6# (2.Rd6?)
- 1. ... dxc6 2. Qxc6# (2.Qh7?)
- 1. ... R4-- 2. Rcc4#
- 1. ... d5 2. Qh7#
- But 1. ... Se3!

Solution:

- 1. Sxc6! --- 2. Sce5# (2. Sb4?)
- 1. ... Kd3 2. Sb4# (2.Sce5?)
- 1. ... dxc6 2. Qh7# (2.Qc6?)
- 1. ... R4-- 2. Sf6#
- 1. ... Se3 2. Sf2#

Haring theme, dual avoidance.

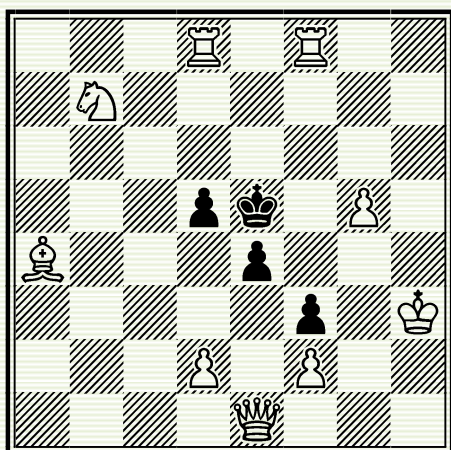
Гаринга тема, антидуали.

No. 5

Gvozdjak-50 JT, 2015

3rs Hon. Mention (The problem was an entry in a general tourney for problems of various genres; 2nd place among orthodox twomovers).

Mark Basisty (Ukraine) basist_mb@ukr.net



9-4 C+ #2

Rice cycle + interchange of mates after thematic defenses.

Change of mate after black king's move in three phases + phases in which thematic defenses act as refutations.

Try: 1. Bb5? waiting
1. ... Kd4 [c] 2. Qa1#
But 1. ... d4 [a] !

Try: 1. Bc2? waiting
1. Kd4 [c] 2. Qxe4 [A] #
But 1. ... Ke6 [b] !

Try: 1. d3? waiting
1. ... d4 [a] 2. Qxe4 [A] #
1. ... Ke6 [b] 2. Rde8 [C] #
But 1. ... Kd4 [c] !

Try: 1. Sd6? waiting
1. ... d4 [a] 2. Qxe4 [A] #
1. ... Ke6 [b] 2. Rfe8 [B] #
But 1. ... Kd4 [c] !

Try: 1. Kg4? waiting
1. ... d4 [a] 2. Rfe8 [B] #
1. ... Ke6 [b] 2. Rde8 [C] #
But 1. ... Kd4 [c] !

Solution: 1. Bb3! waiting
1. ... d4 [a] 2. Rde8 [C] #
1. ... Ke6 [b] 2. Qxe4 [A] #
1. ... Kd4 [c] 2. Rxd5#
(1. ... e3 2. Qxe3#)

Цикл Райса + чередование матов на тематические защиты.
Перемена на ход черного короля в трех фазах + фазы, где тематические защиты являются опровержениями.
(Участвовала в общем конкурсе задач различных жанров, среди ортодоксальных двухходовок - 2 место).

No. 6

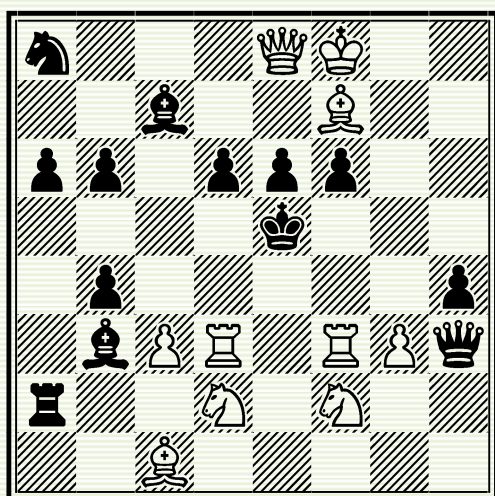
“Die Schwalbe” 12.2015 - No. 16508

Award to be published

Mark Basisty

basist_mb@ukr.net

(Kiev, Ukraine)



10-13 C+ #2

Changed play – Brabec type, Rudenko theme, Dombrovskis theme, changed functions of moves, self-pin.

Try: 1.B:e6? [2.Rfe3 [A] , Rde3 [B] #]
(1...b:c3 2.Rfe3#, 1...h:g3 2.Rde3#)
1...Bd5 2.R:d5 [C] #
1...Qf5 2.R:f5 [D] #
1...B:e6 2.Sc4 [E] #
1...Q:e6 2.Sg4 [F] #
But 1... f5 [a] ! d5 [b] !

Try: 1.Qe7? [2.Q:f6#]
1...f5 [a] 2.Rfe3 [A] #
1...d5 [b] 2.Rde3 [B] #
1...Bd8 2.Q:d6#
But 1...Qf5!

Try: 1.c4? [2.Rd5 [C] #]
1...f5 [a] 2.Q:e6 [G] #
1...B:c4 2.S:c4 [E] #
1...Ra5 2.Bb2#
But 1...R:d2!

Solution: 1.g4! [2.Rf5 [D] #]
1...d5 [b] 2.Q:e6 [G] #
1...Q:g4 2.S:g4 [F] #
1...Q:f3 2.S:f3#

Перемена игры тип Брабеца, темы Руденко, Домбровскиса, Перемена функций ходов, самосвязывание.