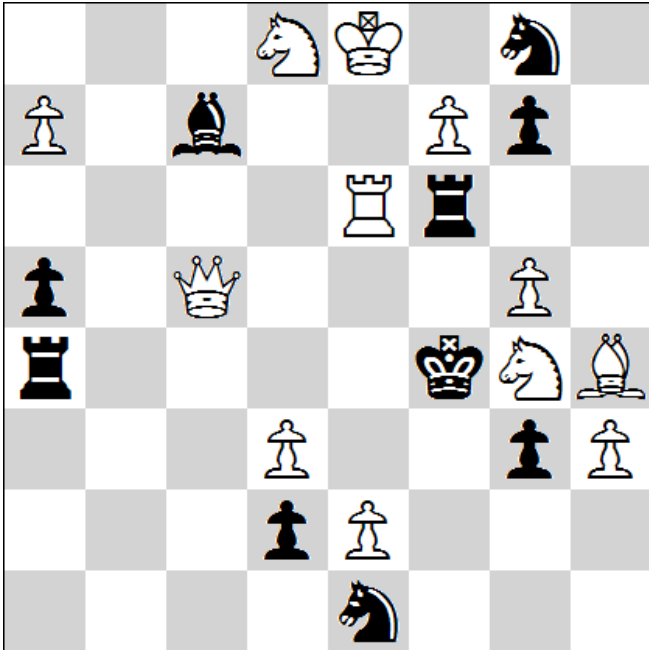


#1

Miodrag Mladenović

4th Prize SuperProblem 2014

TT-103



#2*tttt

12 + 10

1...Sf3 (x) 2.e3# (A)
 1...Rf5 (y) 2.Qe3# (B)

1.g6? [2.Qg5/Bg5#]
 1...Sf3 (x) 2.e3# (A)
 1...Rf5 (y) 2.Qe3# (B)
 1...Rxc6!

1.Qd5? [2.e3#(B)]
 1...Sc2,Sg2 2.Qf3#
 1...Bb6 2.Qe5#
 1...d1S!

1.a8Q? [2.e3#(B)]
 1...Sc2,Sg2 2.Qf3#
 1...d1S!

1.Se3? [2.Qxc7#]
 1...Sf3 (x) 2.Sg2# (C)
 1...Rf5 (y) 2.Qxf5# (D)
 1...Bb8 2.axb8Q#
 1...Bd6 2.Qxd6#
 1...Be5 2.Qxe5#
 1...Rc4 2.Qxc4#
 1...Rd4 2.Qxd4#
 1...Re4 2.Rxe4#
 1...Sxd3 2.Sg2#
 1...Rxe6+ 2.Sxe6#
 1...Rxf7!

1.Re3! [2.Bxg3#]
 1...Sf3 (x) 2.Rxf3# (E)
 1...Rf5 (y) 2.Se6# (F)
 1...Be5 2.Qxe5#
 1...Re4+ 2.Rxe4#
 1...Re6+ 2.Sxe6#

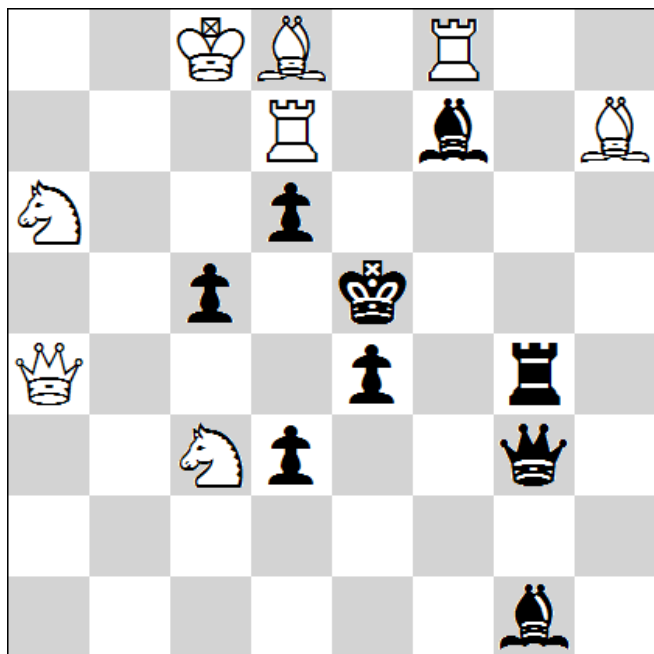
- In the set play there are two thematic mates on e3 square. After the try and solution where white plays to e3 there are changed mates (Zagoruiko 3x2)
- There is a bRf6 cross after moves in various phases (refutations Rxc6 and Rxf7 and variations Rf5 and Re6+)
- The try 1.g6? repeats set-play variations

#2

Miodrag Mladenović

3rd Prize SuperProblem 2013

TT-89



#2

8 + 9

1.Qc6! [2.Qxd6#]

1...Kd4 2.Qxc5#

1...Kf4 2.Qxe4#

1...Ke6 2.Qd5#

1...Bd5 2.Qxd5#

1...d5 2.Qxe4#

1...Rg6 2.Qxe4#

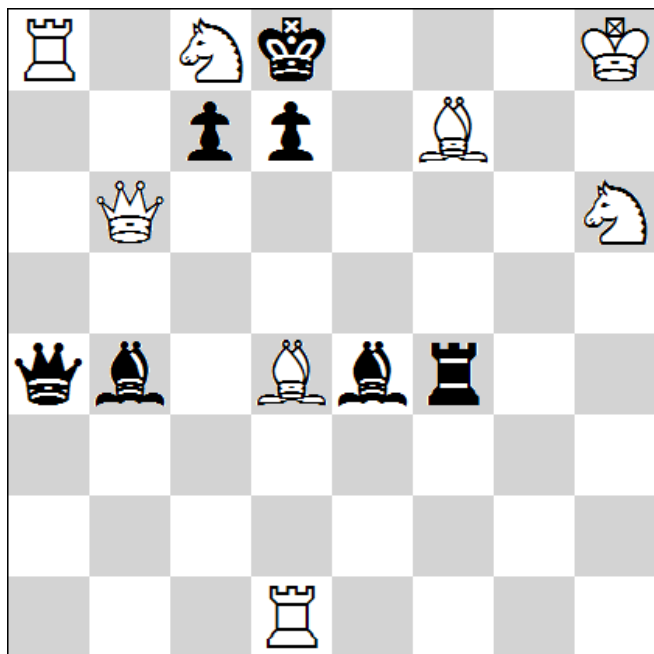
- Flight giving key
- Three thematic variations where black King closes black line

#3

Miodrag Mladenović

2nd Prize SuperProblem 2013

TT-77



#2*

8 + 7

1...cxb6 2.Bxb6#

1.Qe6! [2.Qe8#]

1...c6 **2.Bb6#**

1...c5 **2.Qb6#**

1...d6 **2.Qe7#**

1...d5 **2.Sa7#**

1...Rxf7 2.Sxf7#

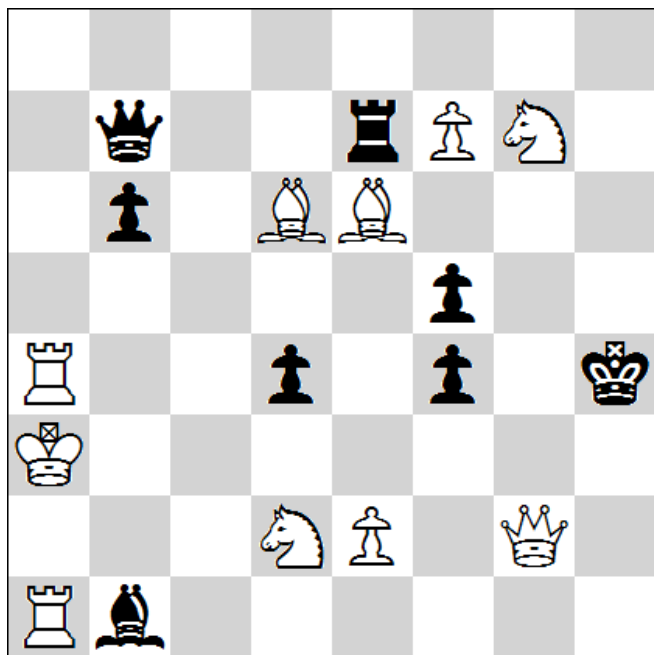
- Avanta theme

#4

Miodrag Mladenović

Pape Mat Plus Challenge 2014

(27.03.2014.)



#2*

10 + 8

1.e4! [2.Sf3#]

1...dxe4(ep) 2.Rxf4#

1...fxe4(ep) 2.Qg3#

1...Qxf4 2.Bxe7#

1...Bxf4 2.Rh1#

1...fxe4 2.Qg4#

- PAPE THEME