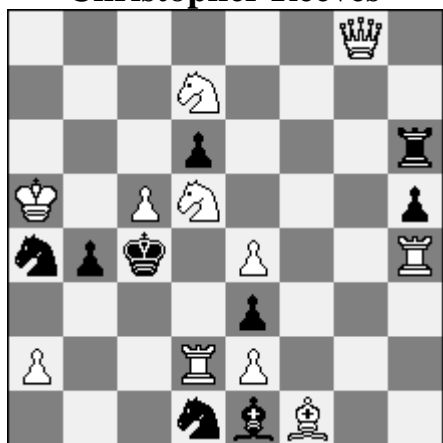


No. 1

Paz Einat
1st – 2nd Prize
The Problemist 2013
Dedicated to the memory of
Christopher Reeves



#2

(11 + 9)

1.**Qa8** ! [2.Qa6 #] (1.Qc8? Bxd2!)

1...Sxc5 2.S7b6 #

Defense on c5 (**a**) Mate on b6 (**A**)

1...dxc5 2.Se5 #

Defense on c5 (**a**) Mate on e5 (**B**)

1...Bxd2 2.e5 #

Defense on d2 (**b**) Mate on e5 (**B**)

1...exd2 2.e3 #

Defense on d2 (**b**) Mate on e3 (**C**)

1...Sdc3 2.Sxe3 #

Defense on c3 (**c**) Mate on e3 (**C**)

1...Sac3 2.S5b6 #

Defense on c3 (**c**) Mate on b6 (**A**)

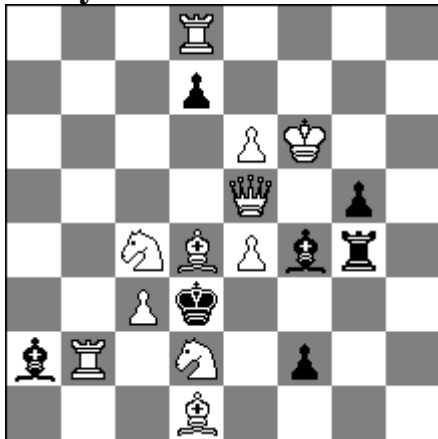
The first execution of the “Domino Cycle” theme in which the cycle is between the **squares** on which black defends and the **squares** on which white give mates.

Note the harmonious defenses on d2, both unguarding d4, with the guard re-established by the battery mates.

paz@pazeinat.com

No. 2

Paz Einat
2nd Place
Italy – Israel Match 2015



#2

(11 + 7)

1.Qb5? [2.Se5 A #]

1...Bxc4 2.Qxc4#

but 1...Bxd2 a !

1.Qd5 ? [2.Be5 B #]

1...Bxc4 2.Qxc4#

1...Be3 2.Se5#

but 1...dxe6 b !

1.Qf5 ! [2.e5#]

1...Bxd2 a 2.Se5 A #

1...dxe6 b 2.Be5 B #

1...B~(xe5+) 2.Se5#

1...Bh2,g3 2.Qf3#

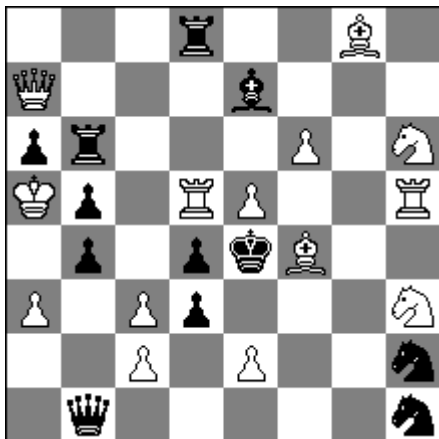
- A unique realization of the Dombrovskis theme:
- The thematic threats and mates, as well as the solution's threats are to the same square – the one evacuated by the key piece.
- In all three phases a different battery is created by the key

paz@pazeinat.com

No. 3

Paz Einat
2nd Prize

Die Schwalbe 2013



#2

(14 + 12)

1.Bd2 ! [2.Sg5#]

1...Rxc8 2.Rxd4# Unguard from behind (a) Mate on d4 (A)

1...Qg1 2.cxd3# Unguard from behind (a) Mate on d3 (B)

1...Sf3 2.exd3# Self-block (b) Mate on d3 (B)

1...Rxd5 2.Bh7# Self-block (b) Mate on h7 (C)

1...Bxf6 2.Qh7# Line opening (c) Mate on h7 (C)

1...Re6 2.Qxd4# Line opening (c) Mate on d4 (A)

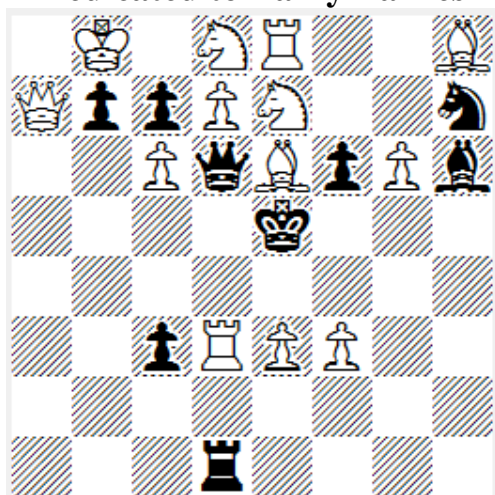
A realization of the “Domino cycle” theme using the weakening motives of the black defenses and the squares on which white gives mate.

paz@pazeinat.com

No. 4

Paz Einat StrateGems 2015 (After Miroslav Brada)

Dedicated to Barry Barnes



#2

(13 + 9)

1.Qa2 ? [2.Sf7#]

1...Qxe7 **a** 2.Qd5#

1...Qxe6 **b** 2.Qxe6#

1...Sg5 **c** 2.Qh2#

(1...Qd5 2.Qxd5#)

but 1...Bxe3 !

1.Bf5 ? [2.Sf7#]

1...Qxe7 **a** 2.Qc5 **A** #

1...Qe6 **b** 2.Qd4 **B** #

1...Sg5 **c** 2.f4#

(1...Bxe3 2.Qxe3#)

but 1...Qd5 !

1.Sg8 ! [2.Sf7#]

1...Qe7 **a** 2.Qd4 **B** #

1...Qxe6 **b** 2.Qc5 **A** #

1...Sg5 **c** 2.Bxf6#

(1...Bxe3 2.Qxe3#

1...Qxd7 2.Bxd7#

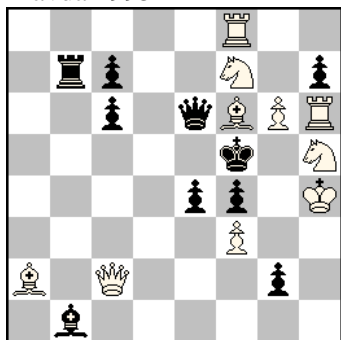
1...Qf8 2.Qd4#)

The problem realizes the reciprocal changes mechanism, known from 1971 (Milan Vukceovich 2nd HM Probleemblad 1971, but with major duals), in a Zagoruiko form along the lines of Brada (see below).

The problem shows:

- Both thematic reciprocal changes mates are by the White Queen
- Zagoruiko 3x3 (compared to 3x2 by Brada)
- No duals (1...Qxg6 in Brada's) and no unprovided set check (1...Qxf6+ in Brada's)
- Good refutations and no duals in all phases.

Miroslav Brada
Pravda 1995



#2

(10+10)

1.Sg5? [2.Sg7,Bxe6#]

1...Qxf6 **a** 2.Qc5# **A**

1...Qf7 **b** 2.fxe4# **B**

mais 1...Qe7!

1.Qc3? [2.Sg7#]

1...Qxf6+ 2.Qxf6#

1...Qxf7 2.Qe5#

1...Qe5 2.Qxe5#

mais 1...exf3!

1.Bg5! [2.Sg7#]

1...Qf6 **a** 2.fxe4# **B**

1...Qxf7 **b** 2.Qc5# **A**

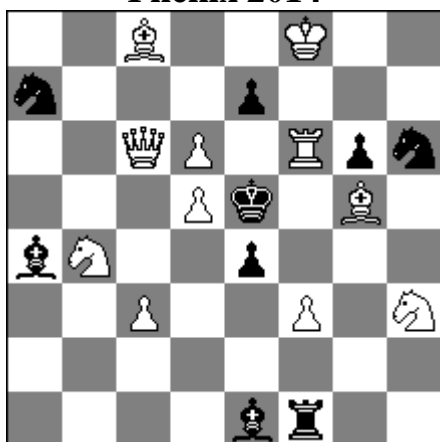
1...Qe5 2.Sd6#

(1...Qxg6 2.Qc5,fxe4#)

paz@pazeinat.com

No. 5

Paz Einat Phenix 2014



#2

(11 + 9)

1.Qc5 ! 2.Qd4#

1...Sc6 2.dxc6# Battery enablement (a) Mate on c6 (A)

1...e6 2.dxe6# Battery enablement (a) Mate on e6 (B)

1...Sf5 2.Re6# Self-block (b) Mate on e6 (B)

1...exf6 2.Bf4# Self-block (b) Mate on f4 (C)

1...Bf2 2.f4# Interference (c) Mate on f4 (C)

1...Sb5 2.Sc6# Interference (c) Mate on c6 (A)

(1...Bxc3 2.Qxc3#)

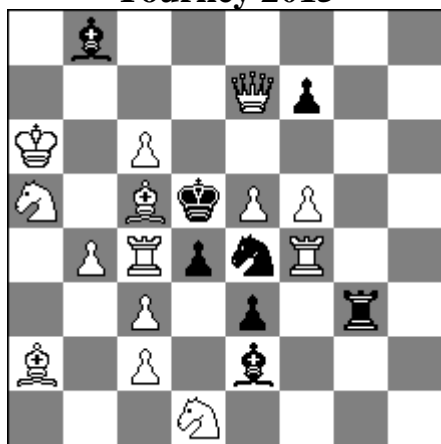
A realization of the “Domino cycle” theme using the weakening motives of the black defenses and the squares on which white gives mate. The use of the battery mates makes this distinct from the other realizations, and thus original.

Thematic key forming the thematic white battery.

paz@pazeinat.com

No. 6

Paz Einat
1st Prize
2nd Israel Open Composition
Tourney 2015



#2

(14 + 8)

1...Bh5 a 2.Rcxd4#

1...Sg5 b 2.Rfxd4#

1.Bxd4 ? [2.Qxf7#]

1...Bh5 a 2.Rc5#

1...Sg5 b 2.Qc5#

(1...Bxc4+/Rg6,g7/Sc5+/Bxe5

2.Bxc4/Sxe3/Qxc5/Qxe5#

but 1...Sd6 !

1.cxd4 ! [2.Qxf7#]

1...Bh5 a 2.Rc3#

1...Sg5 b 2.Sc3#

(1...Bxc4+/Rg6,g7/Sd6/Sxc5+

2.Bxc4/Sxe3/Sc3/Qxc5#

To my knowledge, this is the first realization of obstruction /un-obstruction theme in full Zagoruiko form.

The keys of both try and solution are to the square on which the set mates are given. The new mates are to the squares evacuated by the key piece.

paz@pazeinat.com