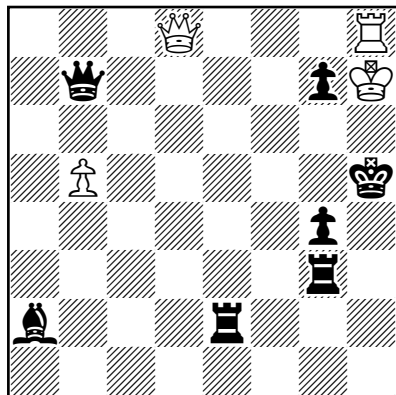


Litvinov
Anatolij
chesstar.com/composers
album, 2015



N 1.

1. Qd8-h4+! Kh5*h4

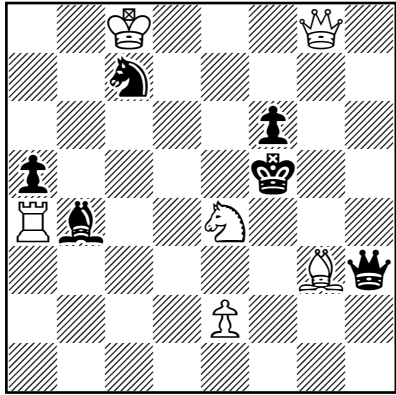
2. Kh7-g6#.

#2

4+7

1 Sol.

Litvinov
Anatolij
chesstar.com/composers
album, 2015



N 2.

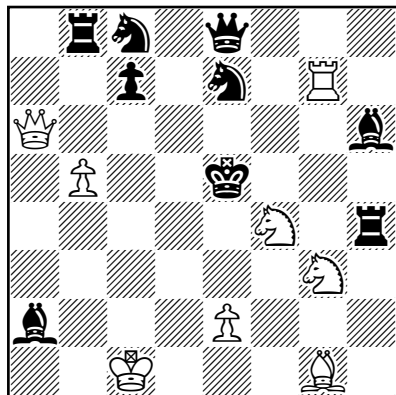
1. Se4-d6+! Bb4*d6
2. e2-e4#.

#2

6+6

1 Sol.

Litvinov
Anatolij
chesstar.com/composers
album, 2015



N 3.

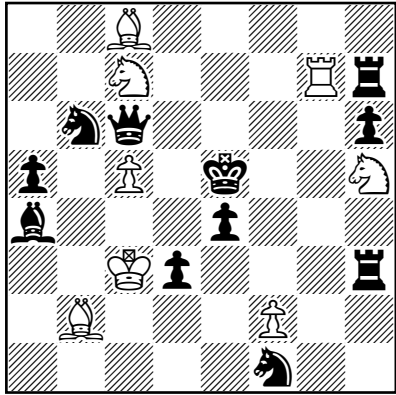
1. Qa6-f6+! Ke5*f6
2. Bg1-d4#.

#2

8+9

1 Sol.

Litvinov
Anatolij
chesstar.com/composers
album, 2015



#2

8+11

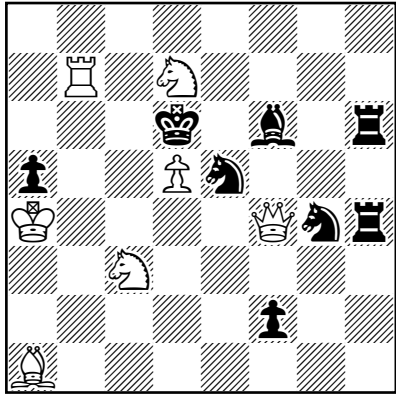
1 Sol.

N 4.

1. f2-f4+! e4*f3 ep.

2. Kc3*d3#.

Litvinov
Anatolij
chesstar.com/composers
album, 2015



#2

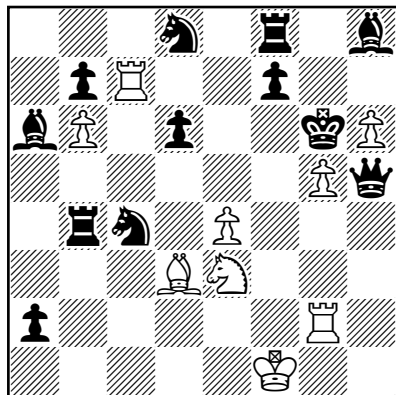
7+8

1 Sol.

N 5.

1. Sd7-b6! threat:
2. Sc3-e4#.

Litvinov
Anatolij
chesstar.com/composers
album, 2015



#2

9+12

1 Sol.

N 6.

1. e4-e5+! f7-f5

2. e5*f6 ep.#.

changed (added black Bh8).